

GROVE

GMK5115

preliminary product guide

features

- 115 USt (100 t) capacity
- 38-197 ft (11.7-60 m) 7-section full power boom
- 33-56 ft (10-17 m) bifold lattice swingaway, hydraulic luffing or manual offset
- 11 ft (3.3 m) 3-sheave heavy-duty jib, hydraulic luffing integrated in swingaway
- 59,700 lb (27 100 kg) counterweight with hydraulic removal system
- 510 hp (380 kW) Mercedes OM 502 LA 8 cylinder turbo-charged diesel engine. Daimler Chrysler, 16 speed G240-16 transmission
- Patented TWIN-LOCK™ boom pinning system
- Independent hydro-pneumatic MEGATRAK™ suspension
- All wheel steering

contents

Features	2
Specifications	3
Dimensions	5
Counterweight Dimensions	6
Travel Proposal	7
Working Range Main Boom	8
Main Boom Charts	9
Load Charts	10
Working Range Manual Offset Swingaway	11
Working Range Hydraulic Offset Swingaway	12
Hydraulic Offset Swingaway Charts	13
Manual Offset Swingaway Charts	14



Manitowoc

All Terrain Crane

www.manitowoc.com

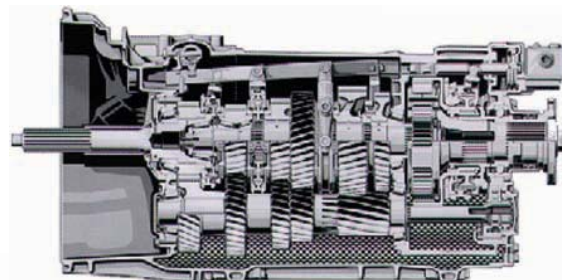


features

2



Mercedes-Benz OM 502 LA
510 bhp (380 kW) @ 1800 rpm
1770 ft./lb. torque (2400 Nm) @ 1200 rpm



Daimler Chrysler
16 speed G240-16

TWIN-LOCK™
Boom pinning mechanism automatically pins the sections in position using two horizontal large diameter boom pins. The proven “U”-shaped MEGAFORM™ design provides a natural cradling position for boom sections which eliminates stiffeners, reducing weight and increasing capacity. Large wear pads provide superior boom alignment when telescoping and allows an excellent transition of weights between sections.



LUFFING BI-FOLD SWINGAWAY
Hydraulically offset lattice bi-fold swingaway lets the operator set the offset from 0° - 40° while under load, from the superstructure cab; 11 ft (3.3 m) 3-sheave heavy duty jib, hydraulic luffing integrated in swingaway.



MEGATRAK™
Independent suspension and all wheel steer system allows wheels to remain on the ground at all times so stresses and weight are not continually transferred between axles.

GMK5115

GROVE



specifications

Superstructure

Boom

38 ft. - 197 ft. (11.7 m - 60 m) seven-section, full power boom with patented TWIN-LOCK™ boom pinning system. Maximum tip height: 207 ft. (63 m).

Boom Nose

Seven nylatron sheaves, mounted on heavy duty tapered roller bearings with removable pin-type rope guards. Quick reeve boom nose. Removable auxiliary boom nose with removable pin type rope guard.

Boom Elevation

Single lift cylinder with safety valve provides boom angle from -1.5° to +82°.

Hydraulically Offsettable Lattice Extension

33 ft. - 56 ft. (10 m - 17 m) bifold lattice swingaway extension **hydraulically offsettable** and luffing under load: 0° - 40°. Controlled from the crane cab. Maximum tip height: 263 ft. (80 m)

* Offsettable Lattice Extension

33 ft. - 56 ft. (10 m - 17 m) bifold lattice swingaway extension manually offset: 0°, 20° or 40°. Maximum tip height: 263 ft. (80 m)

Lattice Extension Inserts

One 16 ft. (5 m) insert for use with lattice swingaway extension. Increases extension length to 72 ft. (22 m).

Load Moment & Anti-Two Block System

Load moment and anti-two block system with audio/visual warning and control lever lockout provides electronic display of boom angle, length, radius, tip height, relative load moment, maximum permissible load, load indication and warning of impending two-block condition.

Cab

All aluminum construction cab with acoustical lining, tinted safety glass, adjustable operator's seat with suspension, opening windows in side and cab rear, hinged front window with wiper, sunvisor and window shade. Other features include hot water heater, armrest integrated crane controls, and ergonomically arranged instrumentation.

Crane Control System

Full electronic control of all crane movements using electrical control levers with automatic reset to zero. Controls are integrated with the LMI and engine management system by CAN-BUS. ECOS system with graphic display.

Swing

Two planetary gears with axial piston motors. Infinitely variable to 1.9 rpm. Holding and service brake.

Counterweight

59,700 lbs. (27 100 kg) consisting of various sections with hydraulic installation/removal system. Controlled from the superstructure cab.

Engine

Mercedes-Benz OM 904 LA diesel, 4 cylinders, water cooled, turbocharged with 148 bhp (110 kW) @ 2200 rpm. Max torque: 428 ft/lb. (580 Nm) at 1200 rpm. Engine emission: EUROMOT/EPA/CARB (non road).

Hydraulic System

2 separate circuits, 1 axial piston variable displacement pump (load sensing) with electronic power limiting control and 1 gear pump for swing. Dual thermostatically controlled oil coolers keep oil at optimum operating temperature. Tank capacity: 158 gal. (600 l)

Hoist

Main and auxiliary hoists are powered by axial piston motor with planetary gear and brake. "Thumb-thumper" hoist drum rotation indicator alerts operator of hoist movement.

	Main	Auxiliary
Line length:	837 ft. (255 m)	837 ft. (255 m)
Rope diameter:	17 mm	17 mm
Line speed:	394 ft./min. (120 m/min)	394 ft./min. (120 m/min)
Line pull:	12,589 lbs. (56 kN)	12,589 lbs. (56 kN)

Electrical System

24V system with three phase alternator, 28V/80A. 2 batteries, 12V/170 Ah.

*Optional Equipment

- *10.8 ft (3.3 m) 3-sheave integrated heavy duty jib.
- *Work light, mounted on top of base section.
- *Cab controlled work lights mounted to top of base section.
- *Stainless steel exhaust system with spark arrestor in lieu of standard.
- *Engine independent diesel cab heater, also serves as engine preheater including 24-hour timer.
- *Engine independent propane gas cab heater.
- *Stereo/radio CD player.
- *Outrigger pad load indicator with readout both in superstructure cab and carrier.
- *Air conditioning.
- *Working range limiter.
- *Boom mounted aircraft warning light.
- *Drive and steer control for superstructure.
- *EKS5 with graphic display.
- *Denotes optional equipment



specifications

Carrier

4

Chassis

Box type, torsion resistant frame is fabricated from high strength steel.

Outrigger System

Four hydraulic single stage outrigger beams with vertical cylinders and outrigger pads, 23.6" (600 mm) square. Outriggers can be set in 3 positions:

- Full - 24.6' (7.5 m)
- Partial - 22.0' (6.7 m)
- 19.4' (5.9 m)
- 16.7' (5.1m)
- Retracted - 8.2' (2.5 m)

Independent horizontal and vertical movement controlled from each side of carrier. Electronic crane level indicators.

Engine

Mercedes-Benz OM 502 LA eight cylinder, water cooled, turbo-charged, with 510 bhp (380 kW) @ 1800 rpm. Max. torque 1,770 ft./lb. (2 400 Nm) @ 1200 rpm.

Engine emissions: EUROMOT/EPA/CARB (off road)
Compression and exhaust brakes.

Fuel Tank Capacity

106 gallons (400 L).

Transmission

Daimler Chrysler, 16 speed G240-16.

Drive/Steer

10X6X10

Axles

- 1st axle line – steer
 - 2nd axle line – steer (additional drive)
 - 3rd axle line – drive/steer (disconnects for highway travel 10x8x10 drive only)
 - 4th axle line – drive/steer (connects for all wheel steer)
 - 5th axle line – drive/steer
- Drive axles with planetary hub reduction and center mounted differential-gearing. Inter-axle and cross axle differential locks.

Suspension

Exclusive MEGATRAK suspension. Independent hydro-pneumatic system acting on all wheels with hydraulic lockout. Suspension can be raised 6.5" (170 mm) or lowered 5" (130 mm) both longitudinally and transversely. Features an automatic leveling system for highway travel.

Tires

10 tires, 16.00R25

Steering

Dual circuit, hydraulic power assisted steering system. Transfer case mounted, ground driven emergency steering pump. Axles 1, 2, 3 and 5 steer on highway. Separate steering of the 4th and 5th axles for all wheel and crab steering, controlled by an electronic rocker switch.

Brakes

Service brakes: pneumatic dual circuit acting on all wheels, anti lock prevention.
Parking brake: pneumatically operated spring loaded brake acting on axle lines 2 and 5.
Air dryer.

Cab

Two-man construction with the following features: safety glass, driver and passenger seats with suspension, heated rear view mirrors, engine independent diesel cab heater, AC, complete instrumentation and driving controls.

Electrical System

24V system with three phase alternator, 28V/100A
2 batteries, 12V/170 Ah

Maximum Speed

53 mph (85 kph)

Gradeability (Theoretical)

- 72% - 14.00 tires
- 64% - 16.00/20.5 tires

Miscellaneous Standard Equipment

Work light; tool kit; fire extinguisher; auxiliary boom nose; radio/CD player in carrier cab, heated rear view mirrors, and cruise control.

Optional Equipment

- *Stainless steel exhaust system with spark arrestor
- *20.5R25 tires (vehicle width 10.2 ft., 3.1 m)
- *10X8X10 drive/steer
- *Electric driveline retarder
- *Worklights for outriggers
- *Steel outrigger floats
- *Spare tire with carry bracket
- *Outrigger pad load indicator
- *Hinged bunk bed

*Denotes optional equipment

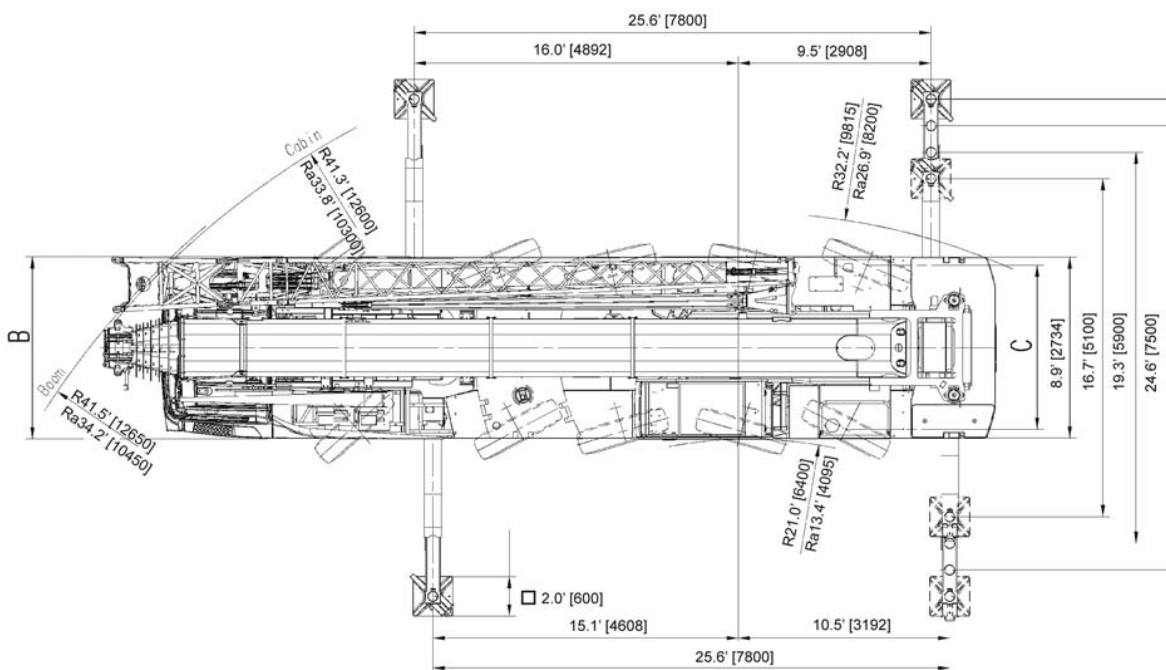
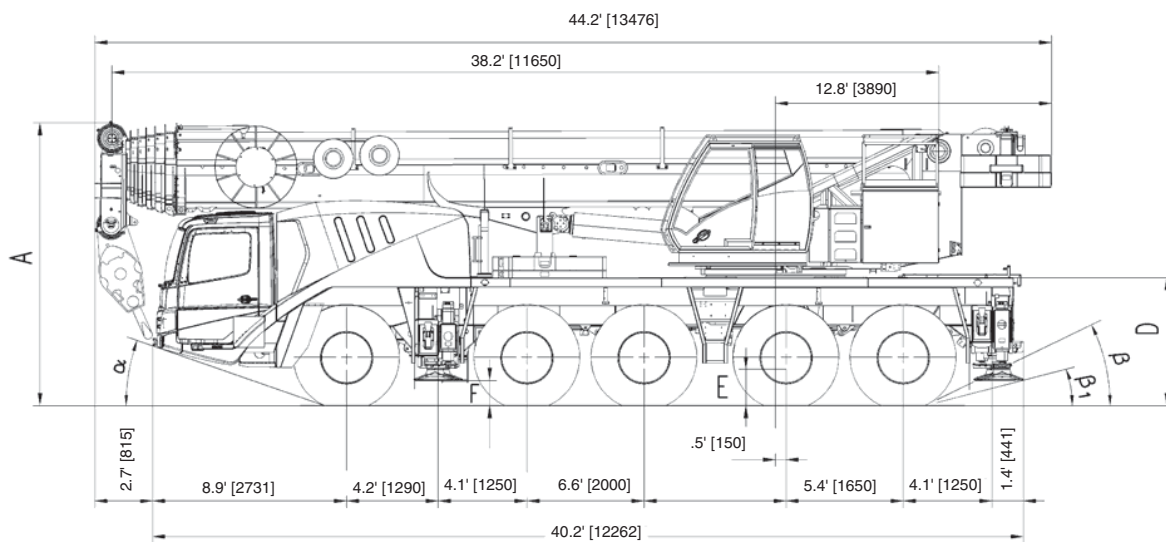
GMK5115

GROVE



dimensions

5



	A	A 5.1 in.* (130 mm)	B	C	D	E	F	α	β	β1
14.00 R25	12.9 (3945)	12.5 (3815)	9.0 (2750)	7.7 (2338)	5.7 (1750)	1.4 (435)	1.2 (356)	18°	23°	17°
16.00 R25	13.1 (3995)	12.7 (3865)	9.8 (3000)	8.2 (2486)	5.9 (1800)	1.6 (485)	1.3 (386)	20°	25°	19°
20.5 R25	13.1 (3995)	12.7 (3865)	9.8 (3000)	8.2 (2507)	5.9 (1800)	1.6 (485)	1.3 (386)	20°	25°	19°

Ra = Radius all wheels steered

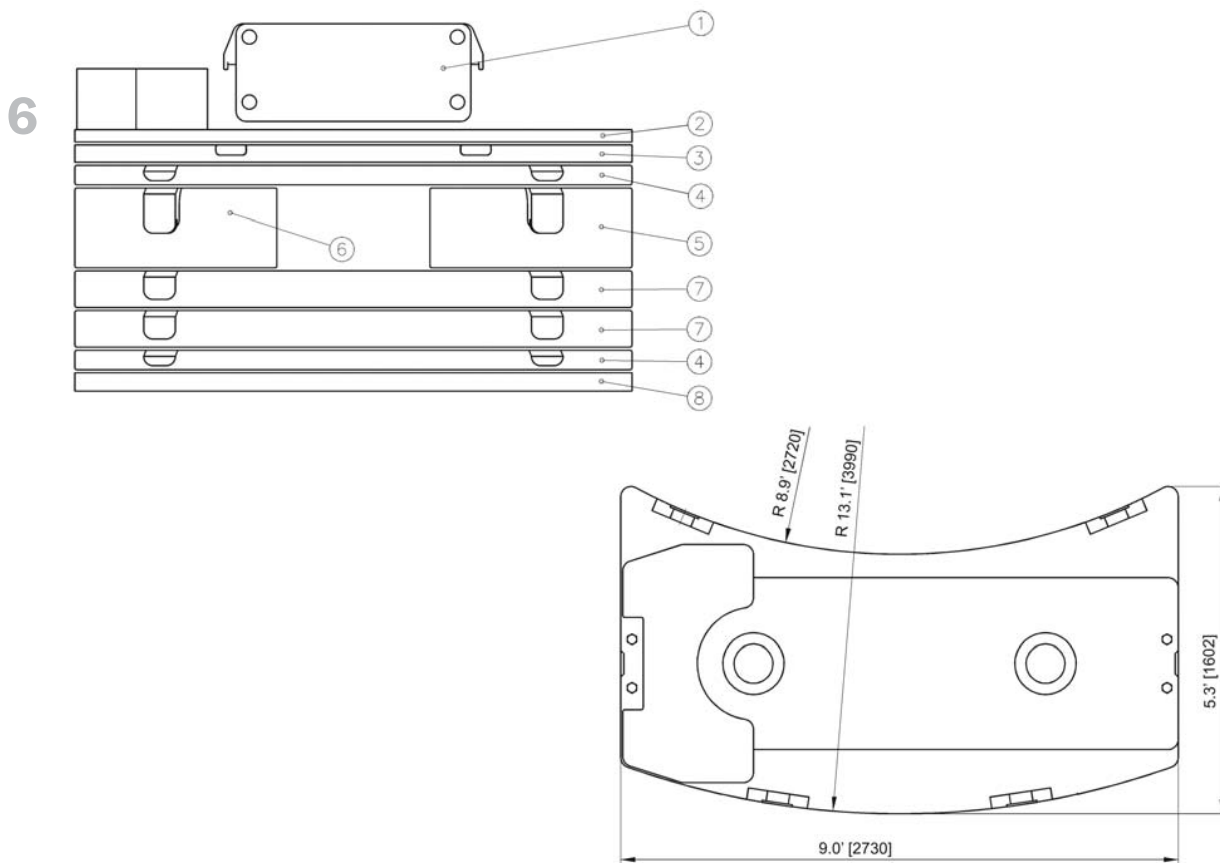
*Lowered

GMK5115

GROVE



counterweight



- 1. 1,323 lb.(600 kg.) Bolted (Aux. Hoist or IPO)
- 2. 5,071 lb.(2 300 kg.) Bolted
- 3. 4 850 lb.(2 200 kg.) Stacking
- 4. 4,850 lb.(2 200 kg.) Stacking
- 5. 7,275 lb.(3 300 kg.) Stacking
- 6. 7,275 lb.(3 300 kg.) Stacking
- 7. 9,700 lb (4 400 kg.) Stacking
- 8. 4,850 lb (2 200 kg.) Baseplate

GMK5115

	1	2	3	4	5	6	7	8
Counterweight Configuration lb.(kg.)								
6,400 (2 900)	●	●						
11,250 (5 100)	●	●						●
16,100 (7 300)	●	●	●					●
20,950 (9 500)	●	●					●	●
25,600 (11 700)	●	●	●				●	●
30,650 (13 900)	●	●	●		●	●		●
35,500 (16 100)	●	●	●	●	●	●		●
40,350 (18 300)	●	●	●	2●	●	●		●
45,200 (20 500)	●	●	●	●	●	●	●	●
50,050 (22 700)	●	●	●		●	●	2●	●
54,900 (24 900)	●	●	●	●	●	●	2●	●
59,750 (27 100)	●	●	●	2●	●	●	2●	●

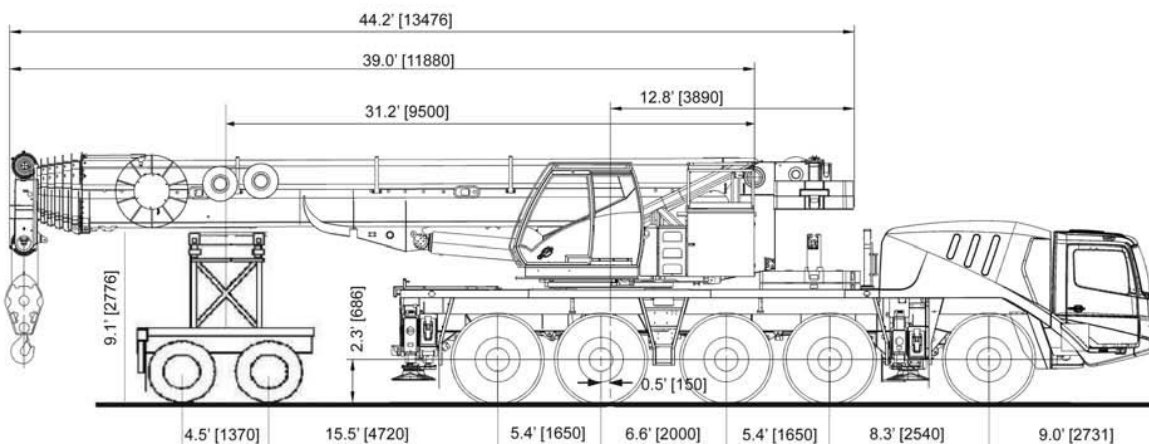
GROVE



weight proposal

7

Trailing Boom



Dolly
26,676 lb.
(12 000 kg)

Rear 3 Axles
50,981 lb.
(23 125 kg)

Front 2 Axles
38,460 lb.
(17 446 kg)

Unit Configuration:

- 42' – 197' boom
- Outrigger pads stowed on unit
- 10 X 8 X 10 drive/steer
- Main and auxiliary hoists with cable

- 36 – 59 ft. hydraulic luffing swingaway
- Additional oil cooler
- 20.5 tires
- 2 axle boom dolly (5,710 lb. / 2 590 kg)
- Fixed cover weight (5,070 lb. / 2 300kg)

Boom Over Front

Basic Weights - lbs (kg)	Axles 1 & 2		Axles 3 - 5		Total	
Mercedes power, 16.00R25 tires, 10x6x10 drive/steer, 2nd oil cooler, outrigger pads, auxiliary hoist, driver and tanks filled	36,381	(16,502)	68,835	(31,223)	105,216	(47,725)
Additions:						
10x8x10 drive/steer						
Electric driveline retarder	-187	(-85)	760	(345)	573	(260)
Spare wheel 14.00 R25 XGC steel rim with stowage	-474	(-215)	1,045	(474)	571	(259)
Spare wheel 16.00 R25 XGC steel rim with stowage	-592	(-268)	1,295	(587)	703	(319)
Spare wheel 20.5 R25 XGC steel rim with stowage	-680	(-309)	1,478	(671)	798	(362)
Brackets for hydraulic swingaway	143	(65)	36	(16)	179	(81)
Hose reel + parts for hydraulic swingaway	604	(274)	-185	(-84)	419	(190)
33 ft. - 56 ft. (10-17m) hydraulic swingaway	2,761	(1,253)	105	(47)	2,866	(1,300)
Auxiliary boom nose	293	(133)	-139	(-63)	154	(70)
4,850 lb. (2200 kg) section 3 pinned to superstructure	-3,514	(-1,594)	8,364	(3,794)	4,850	(2,200)
4,850 lb. (2200 kg) section 8 stowed on carrier	3,271	(1,484)	1,579	(716)	4,850	(2,200)
Substitutions:						
14.00R25 tires	-504	(-228)	-819	(-372)	-1,323	(-600)
20.5R25 tires	361	(164)	587	(266)	948	(430)
Removals:						
Boom assembly	-20,890	(-9,476)	-8,817	(-3,999)	-29,707	(-13,475)
Front outriggers	-3,095	(-1,404)	-13	(-6)	-3,109	(-1,410)
Rear outriggers	2,250	(1,021)	-5,557	(-2,521)	-3,307	(-1,500)
Front and rear outrigger floats	-69	(-32)	-371	(-168)	-441	(-200)

GMK5115

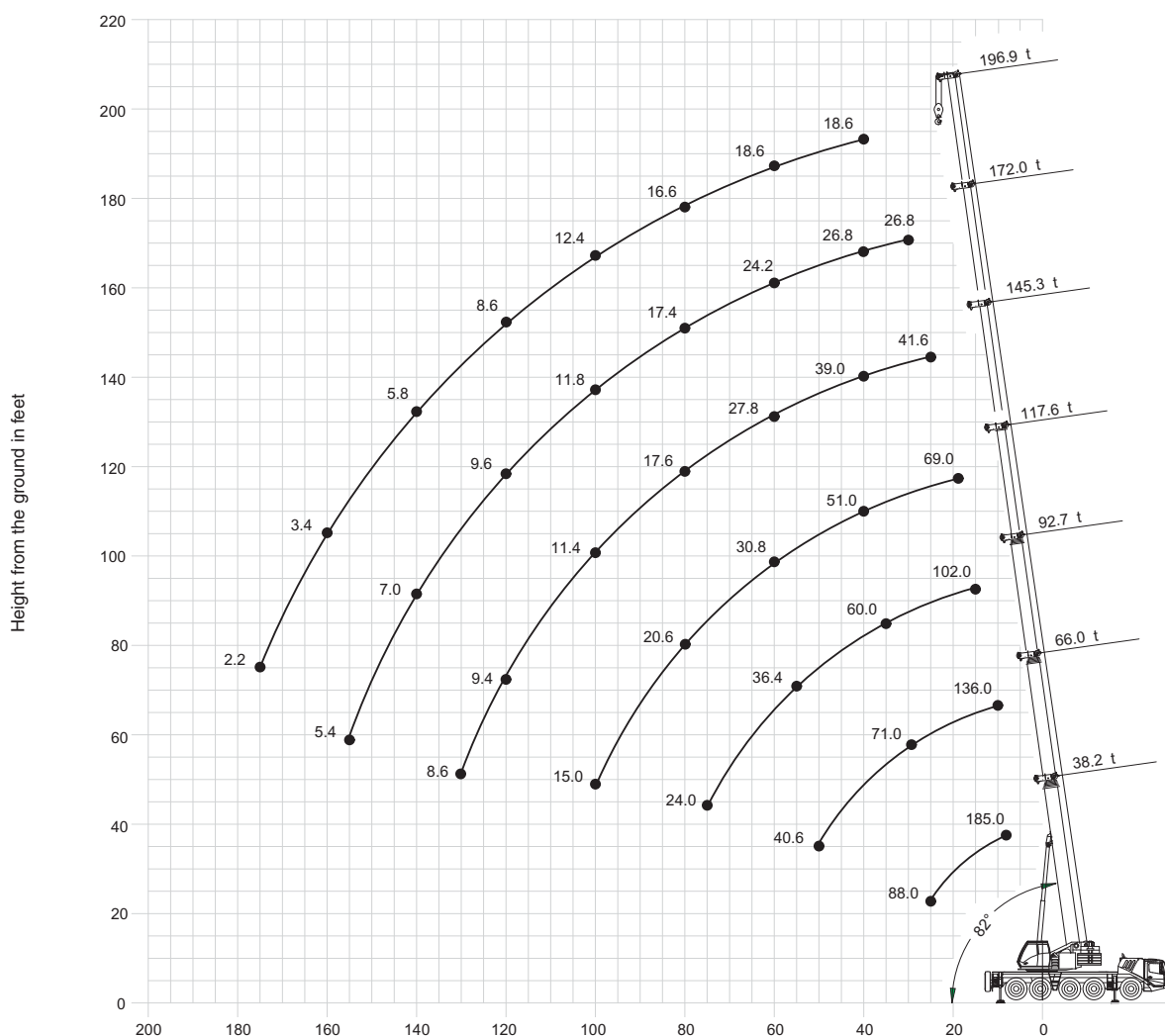
GROVE



working range

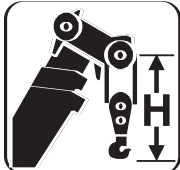
38.2 -196.9 ft (11.7 - 60 m) main boom

8



Operating Radius in Feet From Axis of Rotation

GMK5115

	Hook block (t)	H (ft)
	100 D	10.1
	70 S/D	9.8
	40 S/D	9.5
	20 S/D	9.2
	8 H/B	7.7

Hook heights shown in the working range diagram do not consider loaded boom deflection.

THIS CHART IS ONLY A GUIDE AND SHOULD NOT BE USED TO OPERATE THE CRANE. The individual crane's load chart, operating instructions and other instructional plates must be read and understood prior to operating the crane.

GROVE



load charts

 38.2-196.9 ft.
(11.7-60 m)
  25.6 x 24.6 ft.
100%
  59,700 lb.
(27,100 kg)
  360°

Feet	Pounds (thousands)												
	38.2	52.2	66.0	79.6	92.7	105.4	117.6	131.5	145.3	158.9	172.0	184.7	196.9
8.0	230.0*												
9.0	173.0												
10.0	158.0	146.0	136.0	130.0									
15.0	127.0	121.0	114.0	108.0	102.0								
20.0	106.0	101.0	95.0	93.0	87.0	84.0	69.0	53.0					
25.0	88.0	87.0	81.0	79.0	77.0	74.0	69.0	53.0	41.6				
30.0		75.0	71.0	69.0	68.0	65.0	64.0	52.0	41.6	33.2	26.8		
35.0		63.0	63.0	61.0	60.0	58.0	57.0	48.0	41.2	33.2	26.8	22.0	
40.0		54.0	54.0	54.0	54.0	51.0	51.0	43.6	39.0	33.0	26.8	22.0	18.6
45.0		47.0	46.0	47.0	45.0	46.0	39.4	36.0	32.6	26.8	22.0	18.6	
50.0		40.6	40.2	41.2	40.0	39.6	36.4	33.2	30.4	26.8	22.0	18.6	
55.0			36.4	36.4	36.8	34.8	32.6	30.6	28.0	25.6	22.0	18.6	
60.0			32.8	32.2	33.2	30.8	28.8	27.8	25.6	24.2	21.8	18.6	
65.0			29.0	28.2	29.6	27.4	26.4	24.6	23.8	22.6	21.0	18.6	
70.0				25.6	26.4	24.6	25.0	22.0	21.8	21.0	19.8	18.2	
75.0				24.0	23.6	22.2	22.8	19.6	19.4	19.4	18.8	17.4	
80.0					21.0	20.6	20.8	17.6	17.4	17.4	17.6	16.6	
85.0					19.0	19.8	18.8	15.8	15.6	15.8	16.2	15.8	
90.0					17.0	18.2	17.0	14.2	14.6	14.2	14.6	15.0	
95.0						16.4	15.2	12.8	13.4	12.8	13.2	13.6	
100.0						15.0	13.8	11.4	12.4	11.8	12.0	12.4	
105.0							12.6	10.8	11.8	11.2	11.2	11.4	
110.0							11.4	10.2	11.2	10.6	10.6	10.4	
115.0							10.2	9.8	10.8	10.2	10.0	9.4	
120.0								9.4	10.2	9.6	9.6	8.6	
125.0								9.0	9.2	9.2	8.8	7.8	
130.0								8.6	8.4	8.4	8.0	7.2	
135.0									7.8	7.6	7.2	6.4	
140.0									7.2	7.0	6.6	5.8	
145.0										6.6	6.0	5.2	
150.0										6.0	5.4	4.6	
155.0										5.4	4.8	4.0	
160.0											4.4	3.4	
165.0											3.8	3.0	
170.0											3.4	2.6	
175.0												2.2	

* over rear with special equipment

 38.2-196.9 ft.
(11.7-60 m)
  25.6 x 24.6 ft.
100%
  50,000 lb.
(22,700 kg)
  360°

Feet	Pounds (thousands)												
	38.2	52.2	66.0	79.6	92.7	105.4	117.6	131.5	145.3	158.9	172.0	184.7	196.9
8.0	185.0												
9.0	173.0												
10.0	158.0	146.0	136.0	130.0									
15.0	127.0	121.0	114.0	108.0	102.0								
20.0	106.0	101.0	95.0	93.0	87.0	84.0	69.0	53.0					
25.0	88.0	87.0	81.0	79.0	77.0	74.0	69.0	53.0	41.6				
30.0		73.0	71.0	69.0	68.0	65.0	64.0	52.0	41.6	33.2	26.8		
35.0		61.0	61.0	61.0	60.0	57.0	57.0	48.0	41.2	33.2	26.8	22.0	
40.0		51.0	52.0	51.0	51.0	48.0	48.0	43.6	39.0	33.0	26.8	22.0	18.6
45.0			44.0	43.6	43.6	43.8	41.2	38.6	36.0	32.6	26.8	22.0	18.6
50.0			38.0	39.6	37.8	38.2	35.6	33.4	32.2	30.4	26.6	22.0	18.6
55.0				34.0	33.0	33.6	31.2	30.2	28.0	27.6	25.6	22.0	18.6
60.0				29.6	30.0	29.8	27.6	28.2	24.6	24.2	24.2	21.8	18.6
65.0				26.0	27.4	26.6	24.4	24.0	21.8	21.4	21.4	21.0	18.6
70.0					24.2	23.6	23.0	22.6	19.2	19.0	19.0	19.4	18.2
75.0					21.6	21.0	21.8	20.2	17.0	17.2	17.0	17.4	17.4
80.0						18.6	19.8	18.4	15.2	16.2	15.8	16.2	16.0
85.0						17.8	17.8	16.6	13.8	15.4	14.6	15.0	14.4
90.0						16.8	16.0	14.8	12.8	14.6	13.4	13.6	13.0
95.0							14.4	13.2	12.0	13.4	12.6	12.8	11.8
100.0							13.2	12.0	11.4	12.4	11.8	11.8	10.6
105.0								10.8	10.8	11.6	11.2	10.8	9.6
110.0								9.6	10.2	10.6	10.4	9.8	8.6
115.0								8.6	9.8	9.6	9.6	8.8	7.8
120.0									9.4	8.8	8.6	8.0	7.0
125.0									8.8	8.2	8.0	7.4	6.2
130.0									8.0	7.8	7.2	6.6	5.6
135.0										7.2	6.6	5.8	5.0
140.0										6.6	6.0	5.2	4.4
145.0											5.4	4.6	3.8
150.0											4.8	4.0	3.2
155.0											4.2	3.6	2.8
160.0												3.0	2.2
165.0													2.6
170.0													2.2

THIS CHART IS ONLY A GUIDE AND SHOULD NOT BE USED TO OPERATE THE CRANE. The individual crane's load chart, operating instructions and other instructional plates must be read and understood prior to operating the crane.





9

GМК5115

GROVE



load charts

- 
 38.2-196.9 ft.
 (11.7-60 m)
- 
 25.6 x 24.6 ft.
 (100%)
- 
 6,300 lb.
 (2,900 kg)
- 
 360°

10



Pounds (thousands)

Feet	38.2	52.2	66.0	79.6	92.7	105.4	117.6	131.5	145.3	158.9	172.0	184.7	196.9		
8.0	185.0														
9.0	173.0														
10.0	158.0	146.0	136.0	130.0											
15.0	127.0	121.0	114.0	108.0	102.0										
20.0	94.0	91.0	84.0	81.0	74.0	72.0	65.0	53.0							
25.0	67.0	65.0	63.0	59.0	58.0	54.0	49.0	46.0	41.6						
30.0		48.0	47.0	47.0	44.0	40.8	40.8	37.0	31.8	30.6	26.8				
35.0		38.2	38.4	37.2	35.0	35.2	32.6	29.6	29.4	28.2	24.2	22.0			
40.0		28.6	30.8	30.0	29.6	28.8	26.6	25.4	25.8	24.6	23.0	20.8	18.6		
45.0			25.2	24.8	25.6	24.2	22.2	23.4	22.0	20.8	19.4	17.8	16.2		
50.0			20.4	21.6	21.6	20.4	19.8	20.0	18.8	17.6	16.4	15.0	13.4		
55.0				18.8	18.6	18.6	18.0	17.2	16.2	15.0	14.0	12.6	11.2		
60.0				15.8	16.0	16.2	15.6	15.0	14.0	13.0	11.8	10.6	9.4		
65.0					13.2	13.6	14.2	13.6	13.0	12.0	11.2	10.2	9.0	7.8	
70.0						11.8	12.4	11.8	11.4	10.4	9.6	8.6	7.6	6.2	
75.0						10.2	10.6	10.4	10.0	9.2	8.2	7.4	6.2	5.0	
80.0							9.2	9.2	8.8	8.0	7.2	6.2	5.2	4.0	
85.0							8.0	8.0	7.6	6.8	6.0	5.2	4.2	3.0	
90.0								7.0	6.8	6.6	5.8	5.2	4.2	3.2	2.2
95.0									5.8	5.8	5.0	4.4	3.4	2.6	
100.0										4.8	4.2	3.6	2.8		
105.0											4.2	3.6	3.0	2.2	
110.0												3.4	3.0	2.4	
115.0														2.4	

GMK5115

THIS CHART IS ONLY A GUIDE AND SHOULD NOT BE USED TO OPERATE THE CRANE. The individual crane's load chart, operating instructions and other instructional plates must be read and understood prior to operating the crane.

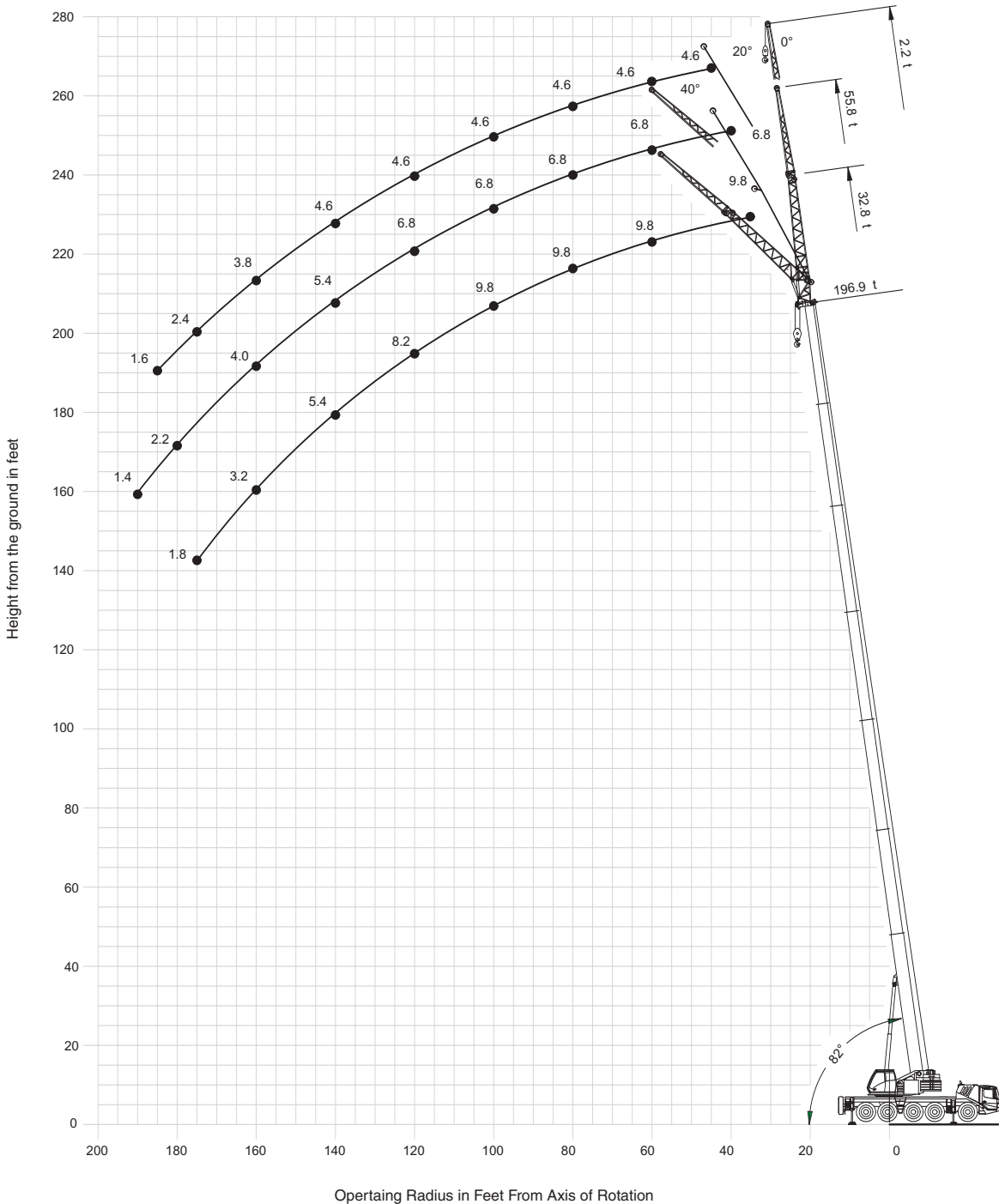


working range

offsettable swingaway

197 ft (60 m) – main boom with 32.8-55.8 ft swingaway and 1x 16 ft insert

11



Hook heights shown in the working range diagram do not consider loaded boom deflection.

THIS CHART IS ONLY A GUIDE AND SHOULD NOT BE USED TO OPERATE THE CRANE. The individual crane's load chart, operating instructions and other instructional plates must be read and understood prior to operating the crane.

GMK5115

GROVE



load charts

hydraulic offsettable swingaway

12

Feet	197 FT + 33 FT			197 FT + 56 FT			197 FT + 72 FT		
	0°	0°-20°	20°-40°	0°	0°-20°	20°-40°	0°	0°-20°	20°-40°
30.0									
35.0	9.8								
40.0	9.8			6.8					
45.0	9.8			6.8			4.6		
50.0	9.8			6.8			4.6		
55.0	9.8	9.2		6.8			4.6		
60.0	9.8	9.2	8.8	6.8			4.6		
65.0	9.8	9.2	8.8	6.8			4.6		
70.0	9.8	9.2	8.8	6.8	6.2		4.6		
75.0	9.8	9.2	8.8	6.8	6.2		4.6	4.6	
80.0	9.8	9.2	8.8	6.8	6.2	5.4	4.6	4.6	4.6
85.0	9.8	9.2	8.8	6.8	6.2	5.4	4.6	4.6	4.6
90.0	9.8	9.2	8.8	6.8	6.2	5.4	4.6	4.6	4.6
95.0	9.8	9.2	8.8	6.8	6.2	5.4	4.6	4.6	4.6
100.0	9.8	9.2	8.8	6.8	6.2	5.4	4.6	4.6	4.6
105.0	9.6	9.2	8.8	6.8	6.2	5.4	4.6	4.6	4.6
110.0	9.2	9.0	8.8	6.8	6.2	5.4	4.6	4.6	4.6
115.0	8.4	8.4	8.8	6.8	6.2	5.4	4.6	4.6	4.6
120.0	7.6	7.6	8.2	6.8	6.2	5.4	4.6	4.6	4.6
125.0	6.8	6.8	7.4	6.8	6.2	5.4	4.6	4.6	4.6
130.0	6.2	6.2	6.6	6.4	6.2	5.4	4.6	4.6	4.6
135.0	5.4	5.4	6.0	5.8	5.8	5.4	4.6	4.6	4.6
140.0	4.8	4.8	5.4	5.2	5.2	5.4	4.6	4.6	4.6
145.0	4.4	4.4	4.8	4.6	4.6	5.4	4.4	4.4	4.6
150.0	3.8	3.8	4.2	4.2	4.2	5.0	3.8	3.8	4.6
155.0	3.4	3.4	3.8	3.6	3.6	4.4	3.4	3.4	4.2
160.0	2.8	2.8	3.2	3.2	3.2	4.0	3.0	3.0	3.8
165.0	2.4	2.4	2.8	2.8	2.8	3.4	2.4	2.4	3.2
170.0	2.0	2.0	2.4	2.4	2.4	3.0	2.0	2.0	2.8
175.0	1.6	1.6	1.8	2.0	2.0	2.6	1.8	1.8	2.4
180.0				1.6	1.6	2.2			2.0
185.0						1.8			1.6
190.0						1.4			

Feet	197 FT + 33 FT		197 FT + 56 FT		197 FT + 72 FT	
	0°-20°	20°-40°	0°-20°	20°-40°	0°-20°	20°-40°
50.0						
55.0	8.8					
60.0	8.8	8.4				
65.0	8.8	8.4				
70.0	8.8	8.4	6.0			
75.0	8.8	8.4	6.0		4.4	
80.0	8.8	8.4	6.0	5.2	4.4	
85.0	8.8	8.4	6.0	5.2	4.4	4.4
90.0	8.8	8.4	6.0	5.2	4.4	4.4
95.0	8.8	8.4	6.0	5.2	4.4	4.4
100.0	8.8	8.4	6.0	5.2	4.4	4.4
105.0	8.8	8.4	6.0	5.2	4.4	4.4
110.0	8.6	8.4	6.0	5.2	4.4	4.4
115.0	8.4	8.4	6.0	5.2	4.4	4.4
120.0	7.6	8.0	6.0	5.2	4.4	4.4
125.0	6.8	7.4	5.8	5.2	4.4	4.4
130.0	6.0	6.6	5.6	5.2	4.4	4.4
135.0	5.4	6.0	5.6	5.2	4.4	4.4
140.0	4.8	5.2	5.2	5.0	4.4	4.4
145.0	4.2	4.6	4.6	5.0	4.4	4.4
150.0	3.6	4.0	4.2	5.0	3.8	4.4
155.0	3.2	3.6	3.6	4.4	3.4	4.2
160.0	2.6	3.0	3.2	3.8	3.0	3.8
165.0	2.2	2.6	2.8	3.4	2.4	3.2
170.0	1.8	2.2	2.4	3.0	2.0	2.8
175.0		1.8	2.0	2.4	1.8	2.4
180.0			1.6	2.0		2.0
185.0				1.8		1.6

GMK5115

THIS CHART IS ONLY A GUIDE AND SHOULD NOT BE USED TO OPERATE THE CRANE. The individual crane's load chart, operating instructions and other instructional plates must be read and understood prior to operating the crane.



load charts

hydraulic offsettable swingaway

197 ft.
(60 m)

33-56-72 ft.
(10-17-22 m)

50,000 lbs.
(22,700 kg)

25.6 x 24.6 ft.
100%

360°

Intermediate Angle

Feet	Pounds (thousands)								
	197' + 33'			197' + 56'			197' + 72'		
	0°	0°- 20°	20°- 40°	0°	0°- 20°	20°- 40°	0°	0°- 20°	20°- 40°
30.0									
35.0	9.8								
40.0	9.8			6.8					
45.0	9.8			6.8			4.6		
50.0	9.8			6.8			4.6		
55.0	9.8	9.2		6.8			4.6		
60.0	9.8	9.2	8.8	6.8			4.6		
65.0	9.8	9.2	8.8	6.8			4.6		
70.0	9.8	9.2	8.8	6.8	6.2		4.6		
75.0	9.8	9.2	8.8	6.8	6.2		4.6	4.6	
80.0	9.8	9.2	8.8	6.8	6.2	5.4	4.6	4.6	4.6
85.0	9.8	9.2	8.8	6.8	6.2	5.4	4.6	4.6	4.6
90.0	9.8	9.2	8.8	6.8	6.2	5.4	4.6	4.6	4.6
95.0	9.8	9.2	8.8	6.8	6.2	5.4	4.6	4.6	4.6
100.0	9.4	9.2	8.8	6.8	6.2	5.4	4.6	4.6	4.6
105.0	8.6	8.6	8.8	6.8	6.2	5.4	4.6	4.6	4.6
110.0	7.6	7.6	8.4	6.8	6.2	5.4	4.6	4.6	4.6
115.0	6.8	6.8	7.4	6.8	6.2	5.4	4.6	4.6	4.6
120.0	6.0	6.0	6.6	6.4	6.2	5.4	4.6	4.6	4.6
125.0	5.2	5.2	6.0	5.6	5.6	5.4	4.6	4.6	4.6
130.0	4.6	4.6	5.2	5.0	5.0	5.4	4.6	4.6	4.6
135.0	4.0	4.0	4.6	4.4	4.4	5.4	4.2	4.2	4.6
140.0	3.4	3.4	4.0	3.8	3.8	4.8	3.6	3.6	4.6
145.0	3.0	3.0	3.4	3.4	3.4	4.2	3.0	3.0	4.0
150.0	2.4	2.4	2.8	2.8	2.8	3.6	2.6	2.6	3.4
155.0	2.0	2.0	2.4	2.4	2.4	3.2	2.2	2.2	3.0
160.0	1.6	1.6	2.0	2.0	2.0	2.8	1.6	1.6	2.4
165.0			1.6	1.6	1.6	2.2			2.0
170.0						1.8			1.6

13

197 ft.
(60 m)

33-56-72 ft.
(10-17-22 m)

50,000 lbs.
(22,700 kg)

25.6 x 24.6 ft.
100%

360°

Loads for Luffing

Feet	Pounds (thousands)					
	197' + 33'		197' + 56'		197' + 72'	
	0°- 20°	20°- 40°	0°- 20°	197' + 56'	0°- 20°	20°- 40°
50.0						
55.0	8.8					
60.0	8.8	8.4				
65.0	8.8	8.4				
70.0	8.8	8.4	6.0			
75.0	8.8	8.4	6.0		4.4	
80.0	8.8	8.4	6.0	5.2	4.4	
85.0	8.8	8.4	6.0	5.2	4.4	4.4
90.0	8.8	8.4	6.0	5.2	4.4	4.4
95.0	8.8	8.4	6.0	5.2	4.4	4.4
100.0	8.8	8.4	6.0	5.2	4.4	4.4
105.0	8.6	8.4	6.0	5.2	4.4	4.4
110.0	7.6	8.4	6.0	5.2	4.4	4.4
115.0	6.8	7.4	6.0	5.2	4.4	4.4
120.0	6.0	6.6	6.0	5.2	4.4	4.4
125.0	5.2	6.0	5.6	5.2	4.4	4.4
130.0	4.6	5.2	5.0	5.2	4.4	4.4
135.0	4.0	4.6	4.4	5.2	4.2	4.4
140.0	3.4	4.0	3.8	4.8	3.6	4.4
145.0	3.0	3.4	3.4	4.2	3.0	4.0
150.0	2.4	2.8	2.8	3.6	2.6	3.4
155.0	2.0	2.4	2.4	3.2	2.2	3.0
160.0	1.6	2.0	2.0	2.8	1.6	2.4
165.0		1.4	1.6	2.2		2.0
170.0				1.8		1.6

GМК5115

THIS CHART IS ONLY A GUIDE AND SHOULD NOT BE USED TO OPERATE THE CRANE. The individual crane's load chart, operating instructions and other instructional plates must be read and understood prior to operating the crane.



load charts

manual offset swingaway

14

Feet	Pounds (thousands)								
	197' + 33'			197' + 56'			197' + 72'		
	0°	20°	40°	0°	20°	40°	0°	20°	40°
30.0									
35.0	9.8								
40.0	9.8			6.8					
45.0	9.8			6.8			4.6		
50.0	9.8	9.8		6.8			4.6		
55.0	9.8	9.8	8.8	6.8			4.6		
60.0	9.8	9.8	8.8	6.8	6.8		4.6	4.6	
65.0	9.8	9.8	8.8	6.8	6.8		4.6	4.6	
70.0	9.8	9.8	8.8	6.8	6.8		4.6	4.6	
75.0	9.8	9.8	8.8	6.8	6.8	5.4	4.6	4.6	4.6
80.0	9.8	9.8	8.8	6.8	6.8	5.4	4.6	4.6	4.6
85.0	9.8	9.8	8.8	6.8	6.8	5.4	4.6	4.6	4.6
90.0	9.8	9.8	8.8	6.8	6.8	5.4	4.6	4.6	4.6
95.0	9.8	9.8	8.8	6.8	6.8	5.4	4.6	4.6	4.6
100.0	9.8	9.6	8.8	6.8	6.8	5.4	4.6	4.6	4.6
105.0	9.6	9.4	8.8	6.8	6.8	5.4	4.6	4.6	4.6
110.0	9.2	9.0	8.8	6.8	6.8	5.4	4.6	4.6	4.6
115.0	8.4	8.8	8.8	6.8	6.8	5.4	4.6	4.6	4.6
120.0	7.6	8.2	8.6	6.8	6.6	5.4	4.6	4.6	4.6
125.0	6.8	7.4	7.8	6.8	6.6	5.4	4.6	4.6	4.6
130.0	6.2	6.6	7.0	6.4	6.4	5.4	4.6	4.6	4.6
135.0	5.4	6.0	6.4	5.8	6.2	5.4	4.6	4.6	4.6
140.0	4.8	5.4	5.6	5.2	6.2	5.4	4.6	4.6	4.6
145.0	4.4	4.8	5.0	4.6	5.6	5.4	4.4	4.6	4.6
150.0	3.8	4.2	4.4	4.2	5.0	5.4	3.8	4.6	4.6
155.0	3.4	3.8	4.0	3.6	4.4	5.0	3.4	4.2	4.4
160.0	2.8	3.2	3.4	3.2	4.0	4.4	3.0	3.8	4.2
165.0	2.4	2.8	3.0	2.8	3.4	4.0	2.4	3.2	3.8
170.0	2.0	2.4	2.4	2.4	3.0	3.4	2.0	2.8	3.2
175.0	1.6	1.8	2.0	2.0	2.6	3.0	1.8	2.4	2.8
180.0				1.6	2.2	2.6		2.0	2.4
185.0					1.8	2.0		1.6	2.0
190.0					1.4	1.6			1.6

Feet	Pounds (thousands)								
	197' + 33'			197' + 56'			197' + 72'		
	0°	20°	40°	0°	20°	40°	0°	20°	40°
30.0									
35.0	9.8								
40.0	9.8			6.8					
45.0	9.8			6.8			4.6		
50.0	9.8	9.8		6.8			4.6		
55.0	9.8	9.8	8.8	6.8			4.6		
60.0	9.8	9.8	8.8	6.8	6.8		4.6	4.6	
65.0	9.8	9.8	8.8	6.8	6.8		4.6	4.6	
70.0	9.8	9.8	8.8	6.8	6.8		4.6	4.6	
75.0	9.8	9.8	8.8	6.8	6.8	5.4	4.6	4.6	4.6
80.0	9.8	9.8	8.8	6.8	6.8	5.4	4.6	4.6	4.6
85.0	9.8	9.8	8.8	6.8	6.8	5.4	4.6	4.6	4.6
90.0	9.8	9.8	8.8	6.8	6.8	5.4	4.6	4.6	4.6
95.0	9.8	9.8	8.8	6.8	6.8	5.4	4.6	4.6	4.6
100.0	9.4	9.6	8.8	6.8	6.8	5.4	4.6	4.6	4.6
105.0	8.6	9.2	8.8	6.8	6.8	5.4	4.6	4.6	4.6
110.0	7.6	8.4	8.8	6.8	6.8	5.4	4.6	4.6	4.6
115.0	6.8	7.4	8.0	6.8	6.8	5.4	4.6	4.6	4.6
120.0	6.0	6.6	7.2	6.4	6.6	5.4	4.6	4.6	4.6
125.0	5.2	6.0	6.4	5.6	6.6	5.4	4.6	4.6	4.6
130.0	4.6	5.2	5.6	5.0	6.0	5.4	4.6	4.6	4.6
135.0	4.0	4.6	5.0	4.4	5.4	5.4	4.2	4.6	4.6
140.0	3.4	4.0	4.2	3.8	4.8	5.4	3.6	4.6	4.6
145.0	3.0	3.4	3.6	3.4	4.2	4.8	3.0	4.0	4.6
150.0	2.4	2.8	3.2	2.8	3.6	4.2	2.6	3.4	4.2
155.0	2.0	2.4	2.6	2.4	3.2	3.8	2.2	3.0	3.6
160.0	1.6	2.0	2.2	2.0	2.8	3.2	1.6	2.4	3.0
165.0		1.6	1.6	1.6	2.2	2.8		2.0	2.6
170.0					1.8	2.2		1.6	2.0
175.0						1.8			1.6

GMK5115

THIS CHART IS ONLY A GUIDE AND SHOULD NOT BE USED TO OPERATE THE CRANE. The individual crane's load chart, operating instructions and other instructional plates must be read and understood prior to operating the crane.

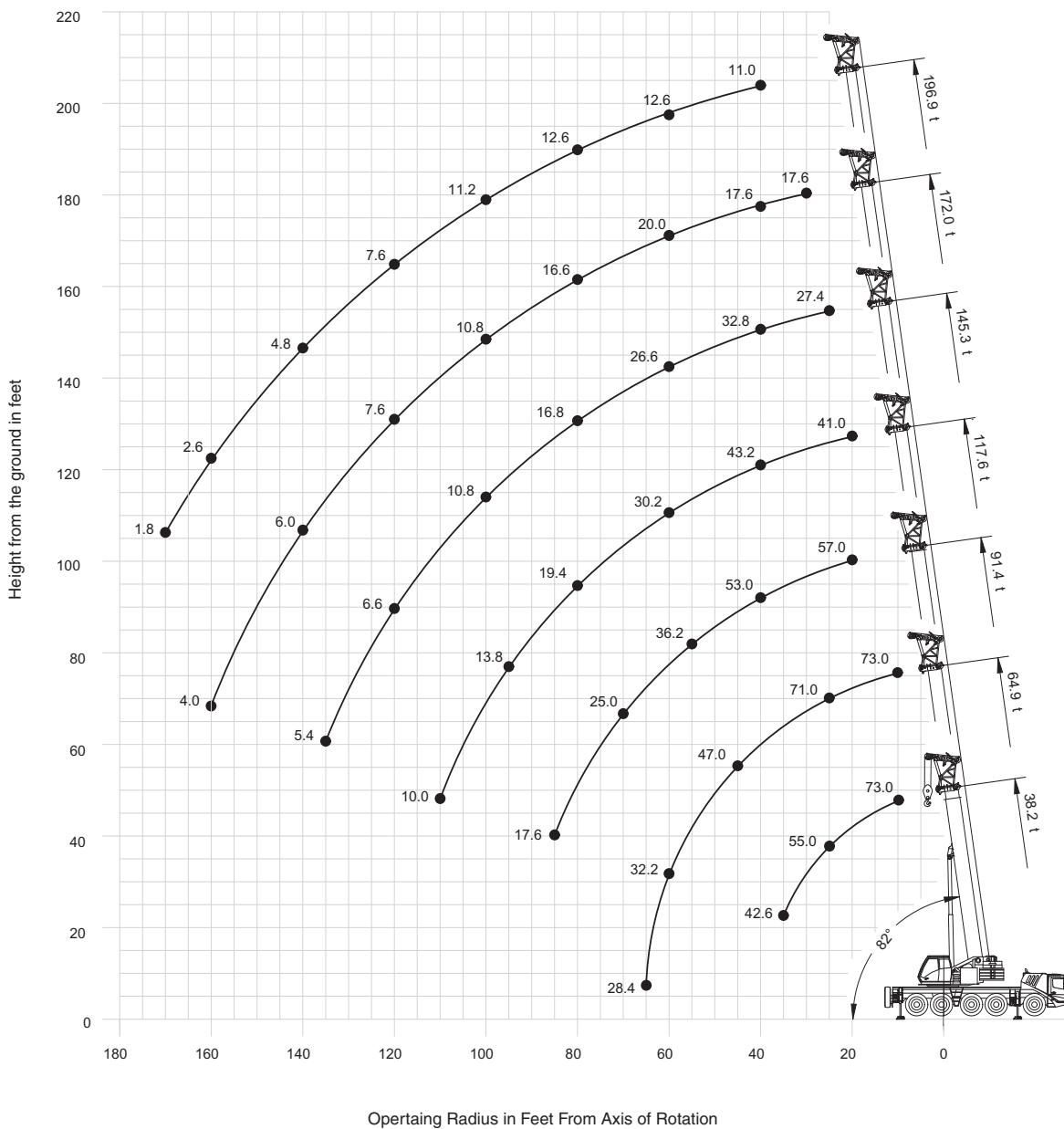


working range

heavy duty jib

38.2 - 196.9 ft (11.7 - 60 m) main boom with 10.8 ft heavy duty jib

15



Hook heights shown in the working range diagram do not consider loaded boom deflection.

THIS CHART IS ONLY A GUIDE AND SHOULD NOT BE USED TO OPERATE THE CRANE. The individual crane's load chart, operating instructions and other instructional plates must be read and understood prior to operating the crane.

GMK5115






GROVE








load charts

Integrated Heavy Duty Jib

16

							Intermediate Angle															
		38-197 ft. (11.7-60.0 m)	10.8 ft. (3.3 m)	59,700 lbs. (27,100 kg)	25.6 x 24.6 ft. 100%	360°	Pounds (thousands)															
Feet	38.2' + 10.8'			64.9' + 10.8'			91.4' + 10.8'			117.6' + 10.8'			145.3' + 10.8'			172.0' + 10.8'			196.9' + 10.8'			
	0°	< 20°	< 40°	0°	< 20°	< 40°	0°	< 20°	< 40°	0°	< 20°	< 40°	0°	< 20°	< 40°	0°	< 20°	< 40°	0°	< 20°	< 40°	
10.0	73.0	73.0	73.0																			
15.0	71.0	65.0	66.0																			
20.0	60.0	57.0	59.0	73.0	71.0	70.0																
25.0	51.0	51.0	55.0	71.0	65.0	65.0	73.0	68.0	57.0													
30.0	45.0	46.0		63.0	59.0	61.0	64.0	64.0	57.0	49.0	46.0	41.0										
35.0	40.2	42.6		57.0	55.0	58.0	58.0	57.0	57.0	46.0	43.6	41.0										
40.0				52.0	51.0	54.0	52.0	52.0	53.0	43.2	41.2	41.0	32.8	29.6	27.4							
45.0				47.0	47.0	47.0	47.0	47.0	47.0	40.4	38.8	39.4	32.8	29.6	27.4	20.0	18.0	17.6				
50.0				41.2	41.2		41.0	41.0	41.4	37.8	36.6	37.4	30.6	29.6	27.4	20.0	18.0	17.6	12.6	11.0	11.0	
55.0				36.2	36.2		36.0	36.0	36.2	33.8	33.8	34.0	28.2	28.4	27.4	20.0	18.0	17.6	12.6	11.0	11.0	
60.0				32.2			31.8	31.8	32.0	29.8	30.0	30.2	25.6	25.6	26.6	20.0	18.0	17.6	12.6	11.0	11.0	
65.0				28.4			28.4	28.4	28.6	26.6	26.6	26.8	23.6	23.6	23.8	20.0	18.0	17.6	12.6	11.0	11.0	
70.0							25.0	25.0		23.8	23.8	24.0	21.0	21.0	21.2	19.4	18.0	17.6	12.6	11.0	11.0	
75.0							22.2	22.2		21.4	21.4	21.6	18.8	18.8	19.0	18.2	18.0	17.6	12.6	11.0	11.0	
80.0							19.8	19.8		19.2	19.4	19.4	16.8	16.8	16.8	16.6	16.6	16.6	12.6	11.0	11.0	
85.0							17.6	17.6		17.4	17.4	17.4	15.0	15.0	15.0	14.8	14.8	15.0	12.6	11.0	11.0	
90.0										15.4	15.6		13.4	13.4	13.6	13.2	13.2	13.4	12.6	11.0	11.0	
95.0										13.8	13.8		12.0	12.0	12.0	12.0	12.0	12.0	11.8	11.0	11.0	
100.0										12.4	12.4		10.8	10.8	10.8	10.6	10.6	10.8	11.2	11.0	11.0	
105.0										11.0	11.2		9.6	9.6	9.6	9.6	9.6	9.6	10.2	10.4	10.4	
110.0										10.0	10.0		8.4	8.4	8.4	8.6	8.8	8.8	9.2	9.4	9.4	
115.0													7.4	7.4		8.2	8.2	8.2	8.2	8.4	8.6	
120.0													6.6	6.6		7.6	7.6	7.6	7.4	7.6	7.6	
125.0													6.2	6.2		7.2	7.2	7.2	6.6	6.8	6.8	
130.0													5.8	5.8		6.6	6.6	6.6	6.0	6.2	6.2	
135.0													5.4	4.0		6.2	6.2		5.4	5.4	5.6	
140.0																6.0	5.8		4.8	4.8	4.8	
145.0																5.6	5.4		4.2	4.2	4.4	
150.0																5.2	5.0		3.6	3.8	3.8	
155.0																4.6	4.6		3.0	3.2		
160.0																4.0			2.6	2.6		
165.0																			2.0	2.2		
170.0																			1.6	1.8		

							Loads for Luffing															
		38-197 ft. (11.7-60.0 m)	10.8 ft. (3.3 m)	59,700 lbs. (27,100 kg)	25.6 x 24.6 ft. 100%	360°	Pounds (thousands)															
Feet	38.2' + 10.8'			64.9' + 10.8'			91.4' + 10.8'			117.6' + 10.8'			145.3' + 10.8'			172.0' + 10.8'			196.9' + 10.8'			
	0°-20°	20°-40°		0°-20°	20°-40°		0°-20°	20°-40°		0°-20°	20°-40°		0°-20°	20°-40°		0°-20°	20°-40°		0°-20°	20°-40°		
10.0	46.0	46.0																				
15.0	43.4	44.0																				
20.0	40.6	43.0		45.0	45.0																	
25.0	38.6	42.8		43.8	44.0		45.0	45.0														
30.0	37.2			41.8	43.2		45.0	45.0		43.8	39.0											
35.0	36.6			40.2	42.8		43.8	44.0		41.6	39.0											
40.0				38.8	42.6		42.4	43.4		39.2	39.0		29.6	26.0								11.0
45.0				37.8	42.8		41.0	43.0		36.8	37.6		29.6	26.0		18.0	17.2					11.0
50.0				37.0			39.4	39.4		34.8	35.6		29.0	26.0		18.0	17.2					10.8
55.0				34.0			34.2	34.4		33.0	34.0		27.0	26.0		18.0	17.2					10.8
60.0							29.6	29.8		29.6	29.6		24.4	25.2		18.0	17.2					10.8
65.0							26.0	26.0		25.8	25.8		22.6	23.0		18.0	17.2					10.8
70.0							22.8			22.6	22.8		21.0	21.2		18.0	17.2					10.8
75.0							20.2			20.0	20.0		18.6	18.8		17.2	17.2					10.8
80.0							18.0			17.8	17.8		16.4	16.6		16.2	16.4					10.8
85.0							16.0			15.8	15.8		14.4	14.6		14.8	15.0					10.8
90.0										14.2			12.8	12.8		13.2	13.4					10.8
95.0										12.6			11.2	11.4		11.8	11.8					10.8
100.0										11.4			10.0	10.0		10.4	10.6					10.8
105.0										10.2			8.8	8.8		9.2	9.2					10.4
110.0										9.0			7.8	7.8		8.4	8.4					9.4
115.0													6.8			7.8	7.8					8.4
120.0													6.4			7.2	7.2					7.4
125.0													6.0			6.8	6.8					6.6
130.0													5.6			6.4	6.4					5.8
135.0													3.8			6.0						5.2
140.0																5.6						4.6
145.0																5.2						4.0
150.0																4.6						3.4
155.0																4.2						2.8
160.0																						2.4
165.0																						2.0
170.0																						1.6

GMK5115

THIS CHART IS ONLY A GUIDE AND SHOULD NOT BE USED TO OPERATE THE CRANE. The individual crane's load chart, operating instructions and other instructional plates must be read and understood prior to operating the crane.



load charts

Integrated Heavy Duty Jib

Intermediate Angle

38-197 ft. (11.7-60.0 m) 10.8 ft. (3.3 m) 50,000 lbs. (22,700 kg) 25.6 x 24.6 ft. (100%) 360°

Pounds (thousands)

Feet	38.2' + 10.8'			64.9' + 10.8'			91.4' + 10.8'			117.6' + 10.8'			145.3' + 10.8'			172.0' + 10.8'			196.9' + 10.8'		
	0°	< 20°	< 40°	0°	< 20°	< 40°	0°	< 20°	< 40°	0°	< 20°	< 40°	0°	< 20°	< 40°	0°	< 20°	< 40°	0°	< 20°	< 40°
10.0	73.0	73.0	73.0			73.0															
15.0	71.0	65.0	66.0			73.0															
20.0	60.0	57.0	59.0	73.0	71.0	70.0			57.0			41.0									
25.0	51.0	51.0	55.0	71.0	65.0	65.0	73.0	68.0	57.0			41.0			27.4						
30.0	45.0	46.0		63.0	59.0	61.0	64.0	64.0	57.0	49.0	46.0	41.0						17.6			
35.0	40.2	42.6		57.0	55.0	58.0	58.0	57.0	57.0	46.0	43.6	41.0			27.4			17.6			
40.0				52.0	51.0	52.0	50.0	50.0	50.0	43.2	41.2	41.0	32.8	29.6	27.4			17.6			11.0
45.0				45.0	45.0	45.0	42.6	42.6	43.0	39.8	38.8	39.4	32.8	29.6	27.4	20.0	18.0	17.6			11.0
50.0				39.0	39.0		37.0	37.0	37.2	34.4	34.6	34.8	30.6	29.6	27.4	20.0	18.0	17.6	12.6	11.0	11.0
55.0				33.4	33.4		32.2	32.2	32.6	30.2	30.2	30.6	27.0	27.0	27.2	20.0	18.0	17.6	12.6	11.0	11.0
60.0				29.0			28.4	28.4	28.6	26.6	26.6	26.8	23.6	23.6	23.8	20.0	18.0	17.6	12.6	11.0	11.0
65.0				25.2			25.2	25.2	25.4	23.6	23.6	23.8	20.8	20.8	21.0	20.0	18.0	17.6	12.6	11.0	11.0
70.0							22.2	22.2		21.0	21.0	21.2	18.4	18.4	18.6	18.0	18.0	17.6	12.6	11.0	11.0
75.0							19.6	19.6		18.8	18.8	19.0	16.2	16.2	16.4	16.0	16.0	16.2	12.6	11.0	11.0
80.0							17.4	17.4		16.8	16.8	17.0	14.4	14.4	14.6	14.2	14.2	14.4	12.6	11.0	11.0
85.0							15.4	15.4		15.0	15.2	15.2	12.8	12.8	12.8	12.6	12.6	12.8	12.6	11.0	11.0
90.0										13.4	13.4		11.4	11.4	11.4	11.4	11.4	11.8	11.8	11.0	11.0
95.0										11.8	11.8		10.0	10.0	10.0	10.6	10.8	10.8	10.6	10.8	10.8
100.0										10.4	10.6		8.8	8.8	8.8	10.0	10.0	10.2	9.4	9.6	9.8
105.0										9.2	9.4		8.0	8.0	8.2	9.2	9.4	9.4	8.4	8.6	8.6
110.0										8.2	8.2		7.6	7.6	7.6	8.6	8.8	8.8	7.4	7.6	7.8
115.0													7.0	7.0		8.2	8.2	8.2	6.6	6.8	6.8
120.0													6.6	6.6		7.6	7.6	7.6	5.8	6.0	6.0
125.0													6.2	6.2		7.2	7.2	7.2	5.2	5.2	5.4
130.0													5.8	5.8		6.4	6.4	6.4	4.4	4.6	4.6
135.0													5.4	2.6		5.6	5.6		3.8	4.0	4.0
140.0																5.0	5.0		3.2	3.4	3.4
145.0																4.4	4.4		2.8	2.8	2.8
150.0																3.8	3.8		2.2	2.4	2.4
155.0																3.4	3.4		1.8	2.0	
160.0																2.8					

17

Loads for Luffing

38-197 ft. (11.7-60.0 m) 10.8 ft. (3.3 m) 50,000 lbs. (22,700 kg) 25.6 x 24.6 ft. 100% 360°

Pounds (thousands)

Feet	38.2' + 10.8'		64.9' + 10.8'		91.4' + 10.8'		117.6' + 10.8'		145.3' + 10.8'		172.0' + 10.8'		196.9' + 10.8'	
	0°-20°	20°-40°	0°-20°	20°-40°	0°-20°	20°-40°	0°-20°	20°-40°	0°-20°	20°-40°	0°-20°	20°-40°	0°-20°	20°-40°
10.0	46.0	46.0		48.0										
15.0	43.4	44.0		46.0										
20.0	40.6	43.0	45.0	45.0		46.0		39.0						
25.0	38.6	42.8	43.8	44.0	45.0	45.0		39.0		26.0				
30.0	37.2		41.8	43.2	45.0	45.0	43.8	39.0		26.0		17.2		
35.0	36.6		40.2	42.8	43.8	44.0	41.6	39.0		26.0		17.2		
40.0			38.8	42.6	42.4	43.4	39.2	39.0	29.6	26.0		17.2		11.0
45.0			37.8	42.8	41.0	43.0	36.8	37.6	29.6	26.0	18.0	17.2		11.0
50.0			36.0		36.0	36.4	34.8	34.8	29.0	26.0	18.0	17.2	10.8	11.0
55.0			30.6		30.8	31.0	30.2	30.6	27.0	26.0	18.0	17.2	10.8	11.0
60.0					26.6	26.6	26.4	26.6	23.6	23.8	18.0	17.2	10.8	11.0
65.0					23.2	23.2	23.0	23.0	20.8	21.0	18.0	17.2	10.8	11.0
70.0					20.2		20.0	20.2	18.4	18.6	18.0	17.2	10.8	11.0
75.0					17.8		17.6	17.8	16.2	16.4	16.0	16.2	10.8	11.0
80.0					15.8		15.6	15.6	14.2	14.4	14.2	14.4	10.8	11.0
85.0					14.0		13.8	13.8	12.4	12.6	12.6	12.8	10.8	11.0
90.0							12.2		10.8	11.0	11.2	11.4	10.8	11.0
95.0							10.8		9.4	9.6	10.2	10.4	10.8	10.8
100.0							9.6		8.2	8.4	9.7	9.6	9.6	9.8
105.0							8.4		7.8	7.8	8.8	9.0	8.6	8.6
110.0							7.6		7.2	7.2	8.4	8.4	7.6	7.8
115.0									6.8	7.8	7.8	7.8	6.8	6.8
120.0									6.4		7.2	7.2	6.0	6.0
125.0									6.0		6.6	6.6	5.2	5.2
130.0									5.6		5.8	5.8	4.6	4.6
135.0									2.4		5.2		3.8	3.8
140.0											4.6		3.2	3.2
145.0											4.0		2.8	2.8
150.0											3.6		2.2	2.2
155.0											3.0		1.8	

GМК5115

THIS CHART IS ONLY A GUIDE AND SHOULD NOT BE USED TO OPERATE THE CRANE. The individual crane's load chart, operating instructions and other instructional plates must be read and understood prior to operating the crane.



notes

18

GMK5115**GROVE**

notes

19

GMK5115**GROVE**

GROVE®

Regional Headquarters

Americas

Manitowoc, Wisconsin, USA

Tel: +1 920 684 6621
Fax: +1 920 683 6278

Shady Grove, Pennsylvania, USA

Tel: +1 717 597 8121
Fax: +1 717 597 4062

Regional Offices

Americas

Brazil

Alphaville
Tel: +55 11 3103 0200
Fax: +55 11 4688 2013

Mexico

Monterrey
Tel: +52 81 8124 0128
Fax: +52 81 8124 0129

Europe, Middle East, Africa

Algeria

Hydra
Tel: +21 3 21 48 1173
Fax: +21 3 21 48 1454

Czech Republic

Netvorice
Tel: +420 317 78 9313
Fax: +420 317 78 9314

France

Baudemont
Tel: +33 385 28 2589
Fax: +33 385 28 0430

Cergy

Tel: +33 130 31 3150
Fax: +33 130 38 6085

Decines

Tel: +33 472 81 5000
Fax: +33 472 81 5010

Germany

Langenfeld
Tel: +49 21 73 8909-0
Fax: +49 21 73 8909 30

Hungary

Budapest
Tel: +36 13 39 8622
Fax: +36 13 39 8622

Italy

Parabiago
Tel: +390 331 49 3311
Fax: +390 331 49 3330

Europe, Middle East, Africa

Ecully, France

Tel: +33 472 18 2020
Fax: +33 472 18 2000

Netherlands

Breda
Tel: +31 76 578 3999
Fax: +31 76 578 3978

Poland

Warsaw
Tel: +48 22 843 3824
Fax: +48 22 843 3471

Portugal

Alfena
Tel: +351 229 69 8840
Fax: +351 229 69 8848

Lisbon

Tel: +351 212 109 340
Fax: +351 212 109 349

Russia

Moscow
Tel: +7 495 641 2359
Fax: +7 495 641 2358

U.A.E.

Dubai
Tel: +971 4 3381 861
Fax: +971 4 3382 343

U. K.

Middlesex
Tel: +44 1 895 43 0053
Fax: +44 1 895 45 9500

Sunderland

Tel: +44 191 522 2000
Fax: +44 191 522 2052

Asia – Pacific

Australia

Melbourne
Tel: +61 3 9 336 1300
Fax: +61 3 9 336 1322

Sydney

Tel: +61 2 9 896 4433
Fax: +61 2 9 896 3122

Asia – Pacific

Shanghai, China

Tel: +86 21 51113579
Fax: +86 21 51113578

Singapore

Tel: +65 6264 1188
Fax: +65 6862 4142

China

Beijing
Tel: +86 10 58674761
Fax: +86 10 58674760

Xi'an

Tel: +86 29 87891465
Fax: +86 29 87884504

Korea

Seoul
Tel: +82 2 3439 0400
Fax: +82 2 3439 0405

Philippines

Makati City
Tel: +63 2 844 9437
Fax: +63 2 844 4712

Factories

Brazil
Alphaville

China
Zhangjiagang

France
Charlieu
La Clayette
Moulines

Germany
Wilhelmshaven

India
Calcutta
Pune

Italy
Niella Tanaro

Portugal
Baltar
Fânzeres

Slovakia
Saris

U.S.A.
Manitowoc
Port Washington
Shady Grove

Constant improvement and engineering progress make it necessary that we reserve the right to make specification, equipment and price changes without notice. Illustrations shown may include optional equipment and accessories, and may not include all standard equipment.

©2008 MANITOWOC

Printed in USA

Form No. GMK5115 PG

Part No. 08-007 / 0208 / 1M



www.manitowoc.com

