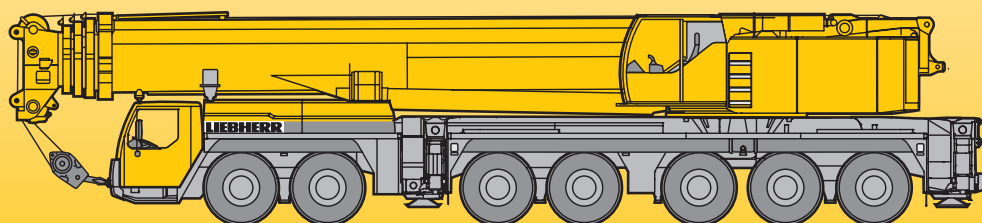


**Mobile Crane  
Grue mobile**

**LTM 1400-7.1**

**Technical Data  
Caractéristiques techniques**



**LIEBHERR**

## Lifting capacities on telescopic boom Forces de levage à la flèche télescopique

51 – 197 ft

360°

264600 lbs

85%

ft	ft											ft
	51 ft	67 ft	84 ft	101 ft	118 ft	135 ft	152 ft	169 ft	186 ft	197 ft		
9	970											9
10	940											10
11	748											11
12	615											12
13	539											13
14	529											14
15	528											15
16	526											16
17	515											17
18	499											18
20	469											20
22	443	392	391	385								22
24	414	380	379	374	300	262						24
26	383	357	357	354	329	274	209	177				26
28	357	337	336	334	320	266	202	172	143			28
30	332	317	317	315	306	255	193	166	142			30
32	310	300	299	297	294	245	186	161	137	115		32
34	292	285	284	282	281	236	178	156	134	114		34
36	276	271	270	268	268	227	171	151	130	111		36
38	260	256	256	254	255	219	164	146	126	109	94	38
40			243	240	242	211	158	141	123	106	93	40
45			217	213	215	194	144	130	115	100	88.5	45
50			194	192	192	180	135	119	107	95	83.5	50
55			174	174	172	167	127	110	99.5	90	79	55
60				157	155	155	120	102	93	84.5	75	60
65				142	140	143	114	94	86.5	79.5	71.5	65
70				130	128	131	108	87.5	81	75	67.5	70
75					118	120	103	81.5	76	70.5	64	75
80					110	110	97.5	76.5	71.5	66.5	60.5	80
85					104	102	93	72.5	67	63	57.3	85
90					97.5	94.5	88.5	69.5	63	59.5	54.6	90
95						88	84.5	66.5	59.1	56.4	51.9	95
100						82	81	63.5	55.6	53.3	49.2	100
105							78	61	52.6	50.4	46.6	105
110							74	58.2	49.8	48	44.2	110
115							69.5	56.2	47.4	45.6	42.1	115
120							65.5	54.4	45.2	43.3	40.1	120
125								52.7	43.2	41.2	38.3	125
130								51.1	41.7	39.1	36.6	130
135								49.6	40.3	37.1	34.9	135
140								46.5	38.9	35.3	33.3	140
145									37.6	33.8	31.7	145
150									36.3	32.4	30.2	150
155									35.1	31.1	29	155
160										29.8	28	160
165										28.5	26.9	165
170										27.2	25.8	170
175										26	24.8	175
180											23.8	180
185											22.3	185
190											19.4	190

\* over rear / en arrière

TAB 146426 / 146428

### Remarks referring to load charts

1. The tabulated lifting capacities do not exceed 85% of the tipping load.
2. The crane's structural steelwork is in accordance with DIN 15018, part 3. Design and construction of the crane comply with DIN 15018, part 2, and with F.E.M. regulations.
3. The 85% overturning limit values take into account wind force 5 = wind speed 20 mph.
4. Lifting capacities are given in kips.
5. The weight of the hook blocks and hooks must be deducted from the lifting capacities.
6. Working radii are measured from the slewing centreline.
7. The lifting capacities given for the telescopic boom only apply if the folding jib is taken off.
8. Lifting capacities are subject to modifications.
9. Lifting capacities above 368 kips only with additional rope pulley.
10. Lifting capacities above 445 kips / 529 kips only with additional pulley block / special equipment.

## Lifting capacities on telescopic boom Forces de levage à la flèche télescopique

ft	51 - 197 ft		360°		220500 lbs		85%															
	51 ft	67 ft	84 ft	101 ft	118 ft	135 ft	152 ft	169 ft	186 ft	197 ft	ft											
9	970																					9
10	940	529																				10
11	748	529	445																			11
12	615	529	445																			12
13	539	529	445	445																		13
14	529	519	445	445	379																	14
15	528	506	445	445	379																	15
16	525	489	445	445	379																	16
17	514	473	442	440	379																	17
18	498	457	437	432	379	318																18
20	466	425	424	415	377	316																20
22	429	397	397	392	365	302	225															22
24	394	372	371	369	351	289	220															24
26	363	348	347	346	334	277	210	177														26
28	337	327	326	325	320	266	202	172	143													28
30	313	307	307	305	305	255	193	166	142													30
32	293	290	289	287	288	245	186	161	137	115												32
34	276	274	274	271	273	236	178	156	134	114												34
36	260	259	260	257	259	227	171	151	130	111												36
38	245	245	246	242	244	219	164	146	126	109	94											38
40			233	229	231	211	158	141	123	106	93											40
45			205	204	203	194	144	130	115	100	88.5											45
50			183	181	179	179	135	119	107	95	83.5											50
55			164	161	159	162	127	110	99.5	90	79											55
60				145	143	145	120	102	93	84.5	75											60
65				131	132	131	114	94	86.5	79.5	71.5											65
70				122	121	119	108	87.5	81	75	67.5											70
75					111	109	103	81.5	76	70.5	64											75
80					102	99.5	97.5	76.5	71.5	66.5	60.5											80
85					94	91.5	93	72.5	67	63	57.3											85
90					87.5	85	87	69.5	63	59.5	54.6											90
95						79	81	66.5	59.1	56.4	51.9											95
100						74	75.5	63.5	55.6	53.3	49.2											100
105							70.5	61	52.6	50.4	46.6											105
110							66	58.2	49.8	48	44.2											110
115							61.5	56.2	47.4	45.6	42.1											115
120								57.8	54.4	45.2	40.1											120
125									52.7	43.2	38.3											125
130									51.1	41.7	36.6											130
135									48.7	40.3	34.9											135
140										45.4	33.3											140
145											31.7											145
150											30.2											150
155											29											155
160											28											160
165											26.9											165
170											25.8											170
175											24.8											175
180											23.8											180
185											22.3											185
190											19.4											190

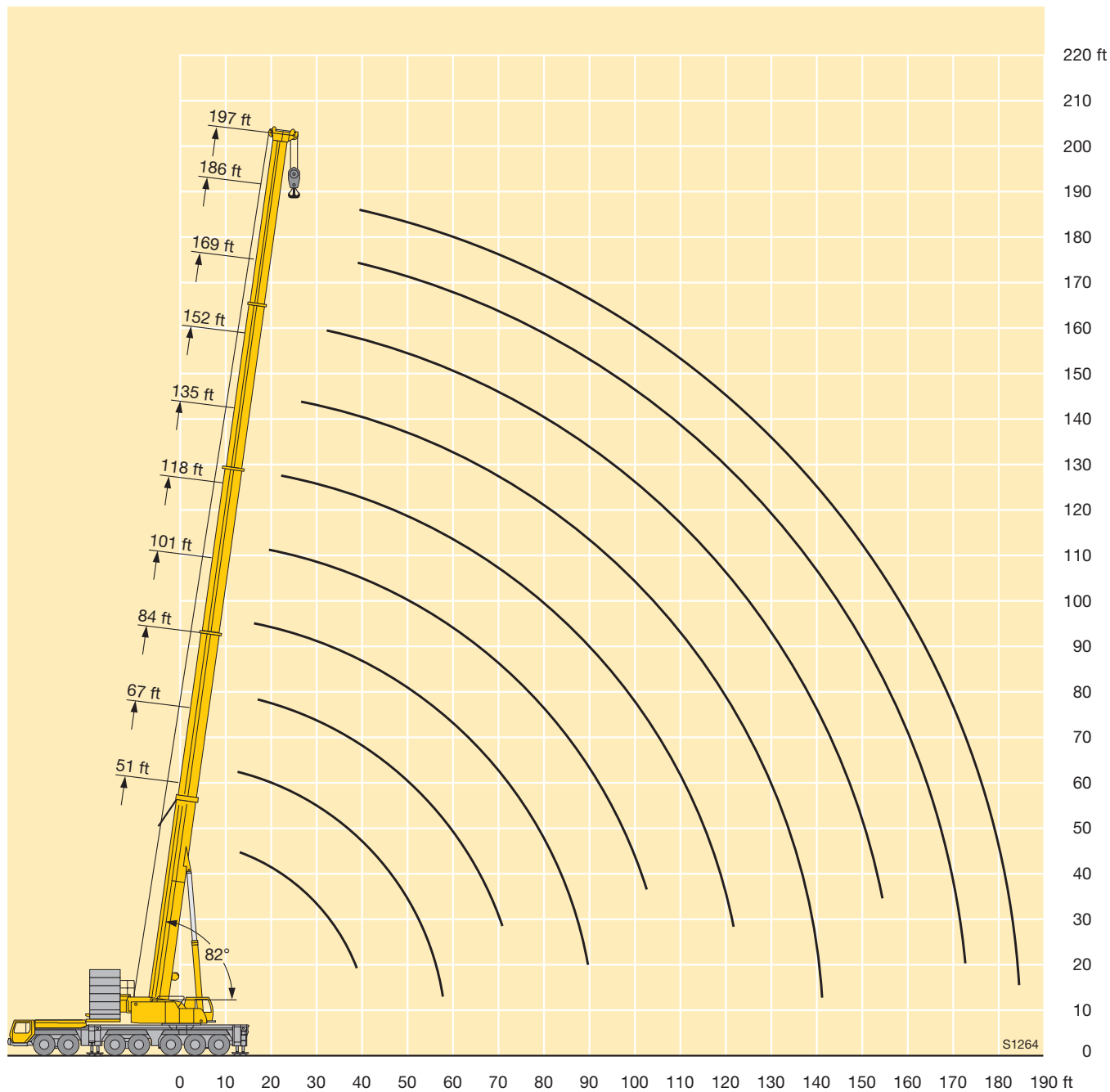
\* over rear / en arrière

TAB 146427 / 146430

### Remarques relatives aux tableaux des charges

1. Les forces de levage indiquées ne dépassent pas 85% de la charge de basculement.
2. La norme DIN 15018, 3ème partie est appliquée pour les charpentes. La construction de la grue est réalisée conformément à la norme DIN 15018, 2ème partie, et aux règles de la F. E. M.
3. A 85% de la charge de basculement, il a été tenu compte d'un vent de force 5 = vitesse de vent 20 mph.
4. Les forces de levage sont données en kips.
5. Le poids des mouffes et crochets doit être soustrait des charges indiquées.
6. Les portées sont calculées à partir de l'axe de rotation.
7. Les forces indiquées pour la flèche télescopique s'entendent fléchette dépliée déposée.
8. Les forces de levage sont modifiables sans préavis.
9. Les charges supérieures à 368 kips ne peuvent être levées qu'avec poulie supplémentaire.
10. Forces de levage plus de 445 kips / 529 kips seulement avec moufle additionnel / équipement supplémentaire.

## Lifting heights Hauteurs de levage



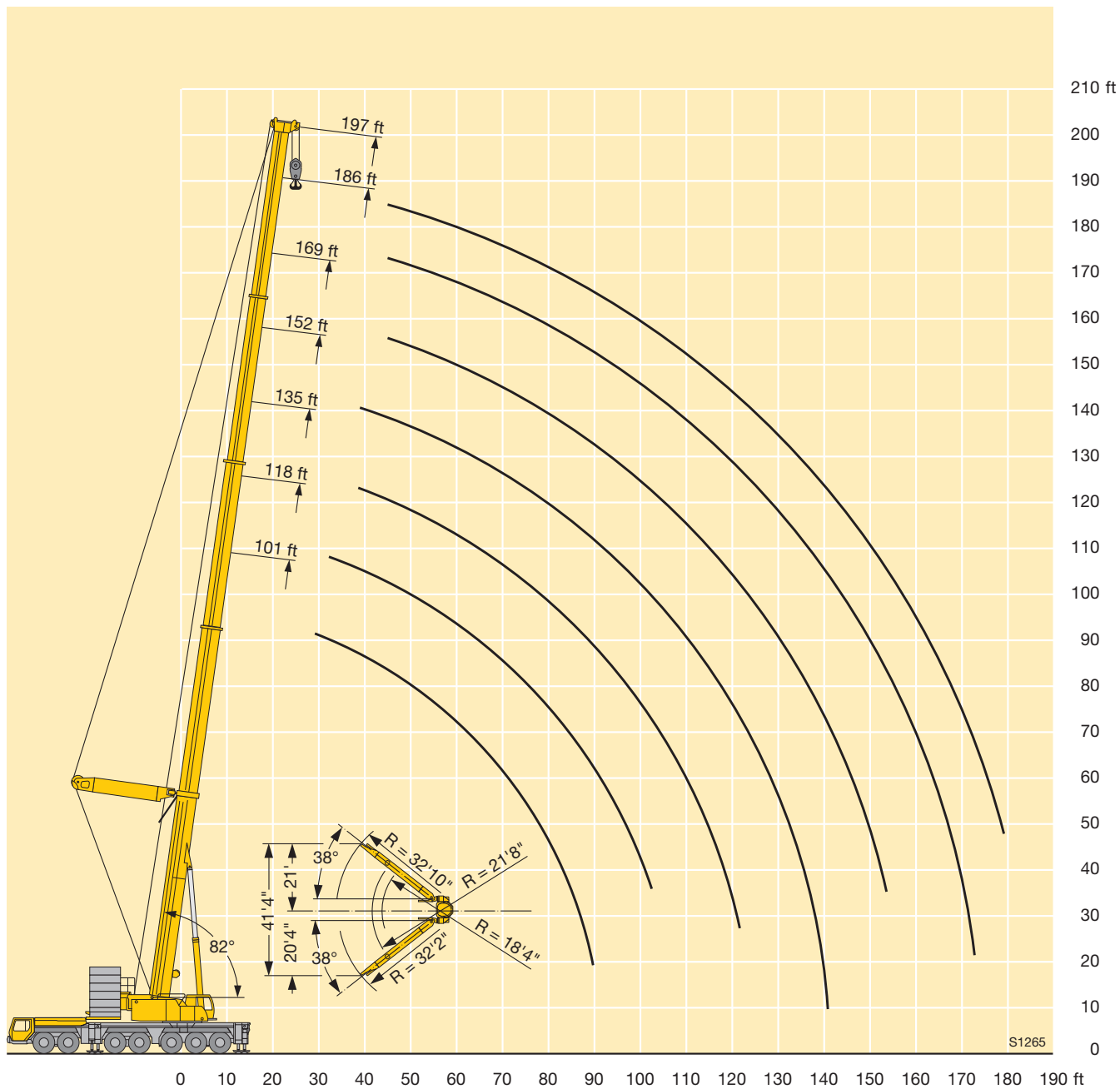
## Lifting capacities on guyed telescopic boom Forces de levage à la flèche télescopique haubanée

ft	101 ft		118 ft		135 ft		152 ft		169 ft		186 ft		197 ft		ft		
	*	*	*	*	*	*	*	*	*	*	*	*	*				
16	416														16		
17	413														17		
18	408		361												18		
20	396		360												20		
22	377		351		320										22		
24	357		339		313										24		
26	337		324		301										26		
28	319		312		290		252								28		
30	301	261	299		280		250								30		
32	285	284	285	251	270		242		211						32		
34	270	286	272	251	260		234		207						34		
36	257	273	259	251	250		227		201						36		
38	244	261	246	251	240		220	215	195		166		152		38		
40	231	249	234	248	230	213	213	213	190		164		151		40		
45	205	223	209	224	207	216	195	195	178	176	154	153	142	141	45		
50	184	200	188	203	188	200	181	181	167	167	146	146	135	135	50		
55	166	180	169	184	170	182	167	169	157	157	137	137	128	128	55		
60	152	163	153	167	154	166	153	158	146	147	130	130	121	121	60		
65	139	148	139	152	140	153	140	148	135	137	123	123	115	115	65		
70	127	138	127	140	128	141	128	138	126	128	116	116	109	109	70		
75	116	128	117	129	118	130	118	129	117	120	110	110	104	104	75		
80	106	118	107	118	108	119	108	119	108	114	104	104	98.5	98.5	80		
85	98	108	99	109	100	110	100	110	99.5	108	98	98.5	93.5	93.5	85		
90	90.5	99	91.5	102	92.5	103	92.5	103	92	102	91	94	89	89	90		
95			85	94.5	86	95.5	86	95.5	85.5	95	84.5	89.5	84	85	95		
100			79	88	80	89	80	89	79.5	88.5	78.5	85.5	78.5	81.5	100		
105					74.5	83	74.5	83	74	82.5	72.5	81.5	73	78	105		
110					69.5	78	69.5	78	69	77.5	68	76	68	74.5	110		
115					65	73	65	73	64.5	72.5	63.5	71.5	63.5	71	115		
120					61	68.5	61	68.5	60	68	59.1	67	59.4	67	120		
125									56.9	64.5	56.4	64	55.3	62.5	55.5	63	125
130									53.4	60.5	52.9	60	51.8	58.9	52.1	59.1	130
135									50.2	57.1	49.7	56.6	48.6	55.4	48.8	55.6	135
140									43.9	48.3	46.7	53.3	45.6	52.2	45.8	52.4	140
145											44	50.3	42.8	49.1	43	49.4	145
150											41.4	47.6	40.2	46.3	40.4	46.6	150
155											39.1	44.6	37.8	43.7	38	44	155
160													35.5	41.3	35.8	41.5	160
165													33.4	39	33.6	39.2	165
170													31.4	36.8	31.6	37.1	170
175													26.5	28.3	29.7	35.1	175
180															28	33.2	180

\* ballast retracted / contrepoids rétracté

TAB 146439 / 146434

# Lifting heights Hauteurs de levage



## Lifting capacities on the lattice fly jib Forces de levage à la fléchette treillis fixe



ft	51 ft + 8 ft*																				ft					
	23 ft			46 ft			69 ft			92 ft			115 ft			138 ft			161 ft			184 ft				
	0°	20°	40°	0°	20°	40°	0°	20°	40°	0°	20°	40°	0°	20°	40°	0°	20°	40°	0°	20°	40°	0°				
26	73																							26		
28	69.5																								28	
30	65.5				63.5																				30	
32	62	50.6			60.5				54.1				43.4						28.2						32	
34	58.6	49.7			58.2				53.1				42.9						27.9						34	
36	55.7	48.2			55.7				51.5				42						27.3						36	
38	52.8	46.7			53.2				49.8				41.1						26.8		21			16.6	38	
40	50.2	45.3			50.8				48.2				40.2						26.3		20.9			16.5	40	
45	44.3	42.5	37.1		45.6	41.2			44.3				37.8						25.1		19.9			15.6	45	
50	39.3	39.9	36.6		41.3	39			40.5				35.7						23.8		18.9			14.9	50	
55	35.2	37	35.7		37.3	36.7			36.9	39			33.7						22.5		18			14.2	55	
60	31.9	33.5	34.6		33.7	34.7	30		33.8	37.1			31.6	28.9					21.2		17.2			13.4	60	
65	28.9	30.2	33.8		30.3	33	29.1	31	34.5	30.6			29.4	27.6					20.1		16.2			12.7	65	
70	25.7	26.7			27.7	30.4	28.6	28.4	32	29.6			27.4	26.5					19		15.3			12.1	70	
75					25.5	27.8	27.8	26	29.6	28.5	25.4	25.4	21.9	19.9					18		14.5			11.4	75	
80					23.5	25.3	26.5	23.8	27.3	27.7	23.5	24.4	21.5	20.8	19				17.1	15.2	13.7			10.8	80	
85					21.7	23	23.9	21.8	24.9	27	21.7	23.4	20.8	19.9	18.2				16.2	14.4	13			10.2	85	
90					20	20.9	23.7	20.3	22.8	25.4	20	22.5	20.2	18.8	17.4				15.5	13.8	12.3	10.8		9.7	90	
95								18.9	20.9	23.3	18.3	21.3	19.6	17.6	16.7	14.7			14.8	13.2	11.7	10.5		9.2	95	
100								17.6	19.2	21	16.8	20	19.2	16.3	16	14.6			14.1	12.6	11.2	10		8.8	100	
105								16.3	17.7	18.9	15.6	18.5	18.9	15	15.4	14			13.5	12.1			9.5	8.3	105	
110								15.1	16.3	18.2	14.7	17	18.5	13.9	15	13.6			12.9	11.6	10.3	9.1		7.9	110	
115								13.9	14.8		13.8	15.7	17.6	13	14.5	13.3			12.4	11.1	10	9.8	8.8	7.5	115	
120											13	14.5	16.3	12.2	14.1	12.9			11.8	10.7	9.8	9.4	8.4	7.2	120	
125											12.1	13.4	14.9	11.5	13.5	12.6			11	10.4	9.5	9	8	6.8	125	
130											11.3	12.4	13.4	10.8	12.5	12.5			10.2	10.1	9.3	8.6	7.7	6.5	130	
135											10.5	11.3		10.1	11.6	12.4			9.6	9.8	9.1	8.3	7.4	6.6	6.1	135
140														9.5	10.8	12			9	9.6	8.9	7.9	7.2	6.5	5.8	140
145														8.9	10.1	11.4			8.5	9.3	8.7	7.6	7	6.3	5.5	145
150														8.3	9.3	10.4			8	9.1	8.6	7.2	6.7	6.1	5.2	150
155														7.7	8.6	10			7.5	8.8	8.5	6.7	6.5	5.9	4.9	155
160														7.1	7.8				7	8.3	8.4	6.1	6.3	5.8	4.7	160
165																			6.5	7.6	8.3	5.6	6.1	5.7	4.3	165
170																			6.1	7	8.2	5.2	5.9	5.6	3.9	170
175																			5.6	6.4	7.4	4.7	5.8	5.5	3.5	175
180																			5.2	5.8		4.2	5.6	5.4	3	180
185																						3.8	5.3	5.3	2.6	185
190																						3.3	4.7	5.3	2.4	190
195																						2.9	4.1	5.1	2.4	195
200																						2.6	3.5	5	2.4	200
205																						2.4	2.9		2.4	205
210																									2.4	210
215																									2.4	215
220																									2.4	220
225																									2.4	225

\* adapter / pièce d'adaptateur

TAB 146444 / 146450 / 146456

# Lifting capacities on the lattice fly jib Forces de levage à la fléchette treillis fixe



ft	152 ft + 8 ft*																				ft		
	23 ft			46 ft			69 ft			92 ft			115 ft			138 ft			161 ft			184 ft	
	0°	20°	40°	0°	20°	40°	0°	20°	40°	0°	20°	40°	0°	20°	40°	0°	20°	40°	0°	20°	40°	0°	
32	104																						32
34	102																						34
36	100																						36
38	97.5	64		79.5																			38
40	95	64		79																			40
45	89.5	61	44.3	75			60																45
50	84	58.1	43.4	71.5	50.2		58.5			44.4			34.6										50
55	79	55.7	42.4	67.5	49.2		56.5			43.7			34.1			26.7							55
60	74.5	53.5	41.4	64	47.2		54.3			42.4			33.1			26.5							60
65	69.5	51.5	40.5	60.5	45.4	33.7	51.8			41.1			32.1			25.7			20				65
70	65.5	49.7	39.8	57.5	43.7	33.1	49.7	41.1		39.6			30.9			24.9			19.4			14.8	70
75	61.5	48	39.1	54.3	42.3	32.4	47.5	40.6		38.2			29.7			24.1			18.8			14.5	75
80	57.6	46.4	38.5	51.3	40.9	31.7	45.3	39.6		36.9			28.6			23.2			18.2			14	80
85	54.5	45.1	37.9	48.3	39.6	31.2	43.2	38.7	30.8	35.7	28.4		27.6			22.3			17.6			13.5	85
90	51.7	43.9	37.3	45.9	38.3	30.7	41	37.8	30.3	34.6	27.7		26.7			21.5			17			13	90
95	49	42.8	37	43.7	37.2	30.2	38.9	36.5	29.7	33.4	27		25.8	19.9		20.8			16.3			12.5	95
100	46.4	41.7	36.7	41.5	36.1	29.7	37	35	29.2	32.1	26.3	21	24.9	19.7		20			15.7			12	100
105	43.9	40.7	36.5	39.5	35.2	29.2	35.2	33.7	28.7	30.7	25.7	21	24.1	19.2		19.3			15.1			11.6	105
110	41.6	39.7	36.2	37.6	34.4	29	33.6	32.4	28.3	29.5	25.1	20.7	23.3	18.7		18.6	14		14.6			11.2	110
115	39.4	38.7	36	35.7	33.6	28.8	32.1	31.1	27.9	28.3	24.6	20.4	22.5	18.2		18	13.7		14			10.8	115
120	37.4	37.4	35.8	34	32.9	28.6	30.6	29.9	27.5	27.1	24	20.1	21.9	17.7	14.3	17.4	13.4		13.5	9.9		10.4	120
125	35.9	35.9	35.5	32.3	32.1	28.4	29.1	28.8	27.1	25.9	23.5	19.8	21.2	17.3	14.3	16.8	13		13	9.9		10	125
130	34.5	34.5	34.2	30.7	30.6	28.2	27.8	27.5	26.9	24.8	23.1	19.5	20.6	16.8	14	16.2	12.6		12.5	9.6		9.6	130
135	33.1	33.1	32.8	29.1	29.1	28	26.5	26.3	26.3	23.6	22.6	19.2	20	16.4	13.8	15.7	12.3		12.1	9.3		9.3	135
140	31.7	31.8	31.4	27.7	27.9	27.6	25.2	25.1	25.4	22.5	21.9	19	19.4	16	13.6	15.2	12	9.7	11.7	9.1		8.9	140
145	30.4	30.5	30.1	26.7	26.8	26.8	23.9	24	24.4	21.5	21.2	18.9	18.7	15.7	13.4	14.8	11.7	9.7	11.3	8.8		8.6	145
150	29.2	29.3	28.8	25.7	25.7	25.7	22.7	22.9	23.3	20.5	20.4	18.8	17.9	15.4	13.2	14.4	11.4	9.6	11	8.6		8.3	150
155	28	28.1		24.7	24.7	24.7	21.8	21.9	22.3	19.5	19.7	18.6	17.2	15.1	13	14	11.1	9.4	10.7	8.3		8	155
160	26.7	26.9		23.8	23.7	23.7	21	21	21.3	18.5	18.9	18.4	16.3	14.8	12.8	13.6	10.8	9.3	10.4	8.1	6.4	7.7	160
165	25.3	25.6		22.9	22.8	22.8	20.2	20.2	20.4	17.6	18.1	18.1	15.5	14.6	12.6	13.2	10.6	9.1	10.1	7.9	6.4	7.5	165
170	23.9	24.1		22	21.9	21.8	19.5	19.4	19.5	16.6	17.3	17.5	14.7	14.3	12.6	12.8	10.4	9	9.8	7.7	6.3	7.2	170
175				21.1	21		18.7	18.7	18.8	16	16.4	16.8	13.9	14.1	12.5	12.4	10.2	8.9	9.5	7.5	6.2	7	175
180				20.3	20.1		18	18	18	15.4	15.7	16.2	13.3	13.7	12.4	12.1	10.1	8.8	9.2	7.3	6.1	6.7	180
185				19.5	19.3		17.3	17.3	17.3	14.9	15.1	15.5	12.9	13.3	12.4	11.7	9.9	8.7	9	7.2	6	6.5	185
190				18.7	18.4		16.6	16.6	16.5	14.3	14.6	14.9	12.4	12.8	12.3	11.1	9.7	8.7	8.7	7	5.9	6.3	190
195				17.8			15.9	16	15.8	13.8	14	14.3	11.9	12.2	12.2	10.5	9.6	8.6	8.5	6.9	5.8	6	195
200							15.3	15.4		13.3	13.5	13.7	11.5	11.7	12	10.1	9.4	8.6	8.2	6.8	5.7	5.8	200
205							14.6	14.8		12.8	12.9	13.1	11	11.2	11.6	9.7	9.2	8.5	8	6.6	5.7	5.6	205
210							14	14.1		12.3	12.4	12.5	10.6	10.8	11.2	9.3	9.1	8.4	7.7	6.5	5.6	5.4	210
215							10.8	11		11.8	11.9	12	10.2	10.4	10.7	9	9	8.3	7.5	6.4	5.6	5.2	215
220										11.4	11.4		9.8	10	10.3	8.6	8.9	8.3	7.2	6.2	5.5	5	220
225										10.9	10.9		9.4	9.6	9.9	8.3	8.6	8.3	6.9	6.1	5.5	4.8	225
230										10.5			9	9.2	9.4	7.9	8.2	8.3	6.5	6	5.4	4.6	230
235										10			8.6	8.8	9	7.6	7.9	8.2	6.2	5.9	5.3	4.4	235
240													8.3	8.5		7.3	7.5	7.9	5.8	5.8	5.3	4.1	240
245													7.9	8.1		7	7.2	7.5	5.5	5.8	5.2	3.8	245
250													7.6	7.7		6.7	6.8	7.1	5.2	5.7	5.2		250
255													7.2	7.4		6.4	6.5	6.8	4.9	5.4	5.2		255
260																6.1	6.2	6.4	4.5	5.1	5.2		260
265																5.8	5.8		4.2	4.7	5.1		265
270																5.5	5.5		3.9	4.4	4.9		270
275																5.2	5.3		3.6	4.1	4.5		275
280																		4.9	3.3	3.7	4.1		280
285																			3	3.4			285
290																				2.8	3.1		290
295																				2.5	2.8		295

\* adapter / pièce d'adaptateur

TAB 146444 / 146450 / 146456

## Lifting capacities on the lattice fly jib Forces de levage à la flèche treillis fixe



ft	169 ft + 8 ft*																				ft		
	23 ft			46 ft			69 ft			92 ft			115 ft			138 ft			161 ft			184 ft	
	0°	20°	40°	0°	20°	40°	0°	20°	40°	0°	20°	40°	0°	20°	40°	0°	20°	40°	0°	20°	40°	0°	
38	88.5																						38
40	88																						40
45	84	61																					45
50	80.5	58.8	43.1																				50
55	76.5	56.4	42.7	69.5																			55
60	72.5	54.3	41.8	61	47.4																		60
65	68.5	52.4	40.9	58.2	45.6																		65
70	65	50.7	40.2	55.7	44	32.9																	70
75	61	49.1	39.6	53.2	42.6	32.5	45.5	38.8															75
80	57.6	47.6	39	50.8	41.3	31.9	43.7	38.6															80
85	54.2	46.1	38.4	48.3	40	31.4	41.9	37.8															85
90	51.3	44.8	37.9	46	38.9	30.9	40.2	36.9	30.3	33.3	26.7												90
95	48.6	43.6	37.4	43.7	37.8	30.4	38.5	35.8	30	32.3	26.3												95
100	46	42.7	37	41.5	36.8	30	36.8	34.5	29.6	31.3	25.8												100
105	43.5	41.7	36.8	39.4	35.8	29.6	35.2	33.3	29.3	30.1	25.2												105
110	41.2	40.8	36.6	37.4	35	29.2	33.7	32.1	29	29	24.7	20.3											110
115	39	39.1	36.5	35.5	34.3	28.9	32.3	31	28.7	28	24.2	20.1	21.9	17.8									115
120	36.8	37	36.2	33.7	33.6	28.7	30.8	30	28.4	26.9	23.7	19.9	21.3	17.4									120
125	34.6	35	35.7	32	32.8	28.5	29.3	29	27.8	25.9	23.2	19.6	20.7	17									125
130	32.5	33	33.8	30.3	31.2	28.4	28	27.9	27	24.9	22.8	19.4	20.1	16.6	13.8								130
135	30.8	31.3	31.9	28.7	29.7	28.2	26.6	26.8	26.2	23.8	22.3	19.1	19.6	16.2	13.6	15.3	12						135
140	29.3	29.7	30.1	27.1	28.1	27.9	25.3	25.7	25.5	22.7	21.7	18.9	19.1	15.9	13.4	14.9	11.7						140
145	27.9	28.2	28.4	25.6	26.7	27.3	24	24.7	24.7	21.6	21.1	18.7	18.6	15.5	13.2	14.5	11.5						145
150	26.5	26.8	26.9	24.5	25.3	25.9	22.8	23.7	23.7	20.6	20.4	18.6	18	15.1	13	14.1	11.2	9.4					150
155	25.2	25.4	25.4	23.4	24.1	24.6	21.6	22.6	22.8	19.6	19.8	18.5	17.4	14.9	12.9	13.8	11	9.3	10.4	8.2			155
160	24.2	24.3	24	22.2	23	23.5	20.4	21.4	22	18.6	19.1	18.4	16.7	14.7	12.7	13.4	10.7	9.2	10.1	8			160
165	23.2	23.4		21.2	21.9	22.3	19.3	20.3	21.1	17.6	18.5	18.2	15.9	14.4	12.5	13.1	10.5	9.1	9.9	7.8			165
170	22.3	22.5		20.1	20.8	21.1	18.6	19.2	20.3	16.6	17.7	17.7	15.1	14.2	12.5	12.7	10.3	8.9	9.6	7.6	6.2		170
175	21.3	21.6		19.1	19.7	19.9	17.8	18.4	19.4	15.7	17	17.2	14.4	14	12.4	12.4	10.2	8.8	9.4	7.4	6.1		175
180	20.5	20.7		18.1	18.7	18.7	17	17.5	18.4	14.9	16.3	16.6	13.6	13.8	12.4	12.1	10	8.7	9.1	7.2	6		180
185	19.6			17.2	17.6		16.3	16.8	17.5	14.3	15.6	16	12.9	13.5	12.3	11.8	9.9	8.6	8.9	7.1	5.9		185
190	18.8			16.4	16.6		15.5	16	16.6	13.8	14.8	15.3	12.1	13	12.3	11.5	9.7	8.5	8.7	7	5.8		190
195				15.7	15.9		14.7	15.2	15.7	13.2	14.1	14.8	11.4	12.6	12.2	11	9.6	8.5	8.5	6.8	5.7		195
200				15	15.3		14	14.4	14.8	12.6	13.5	14.2	10.9	12.1	12.1	10.4	9.4	8.5	8.3	6.7	5.6		200
205				14.4			13.3	13.6	13.9	12	12.9	13.5	10.4	11.6	11.9	9.8	9.3	8.4	8.1	6.6	5.6		205
210							12.6	12.9		11.5	12.3	12.8	10	11.2	11.6	9.3	9.2	8.4	7.9	6.5	5.5		210
215							12	12.1		10.9	11.7	12.2	9.6	10.7	11.2	8.9	9	8.4	7.5	6.3	5.5		215
220							11.5	11.4		10.4	11.1	11.5	9.2	10.2	10.8	8.5	8.9	8.3	7.1	6.2	5.5		220
225							11			9.8	10.5	10.8	8.8	9.7	10.3	8.1	8.7	8.3	6.7	6.1	5.4		225
230										9.3	10		8.4	9.2	9.8	7.7	8.5	8.2	6.2	6	5.4		230
235										8.8	9.3		7.9	8.8	9.2	7.3	8.2	8.2	5.8	5.9	5.4		235
240										8.3	8.8		7.5	8.3	8.7	6.9	7.8	8.1	5.4	5.8	5.3		240
245										7.9	8.2		7.1	7.9	8.2	6.4	7.4	8	5	5.7	5.2		245
250										6.7	7.4		6	7	7.6	6	7	7.6	4.6	5.6	5.2		250
255										6.2	6.9		5.6	6.6	7.2	4.2	5.6	7.2	4.2	5.6	5.2		255
260										5.9	6.4		5.2	6.1	6.7	3.9	5.2	6.7	3.9	5.2	5.2		260
265										5.6	6		4.7	5.7	6.3	3.5	4.8	6.3	3.5	4.8	5.2		265
270										5.3			4.3	5.2	5.7		4.4	5.7		4.4	5.1		270
275													5			3.9	4.8	5.1		4	4.8		275
280																3.5	4.3			3.6	4.3		280
285																3.1	3.8				3.8		285
290																2.8	3.2						290
295																2.5	2.7						295

\* adapter / pièce d'adaptateur

TAB 146444 / 146450 / 146456

## Lifting capacities on the lattice fly jib Forces de levage à la fléchette treillis fixe

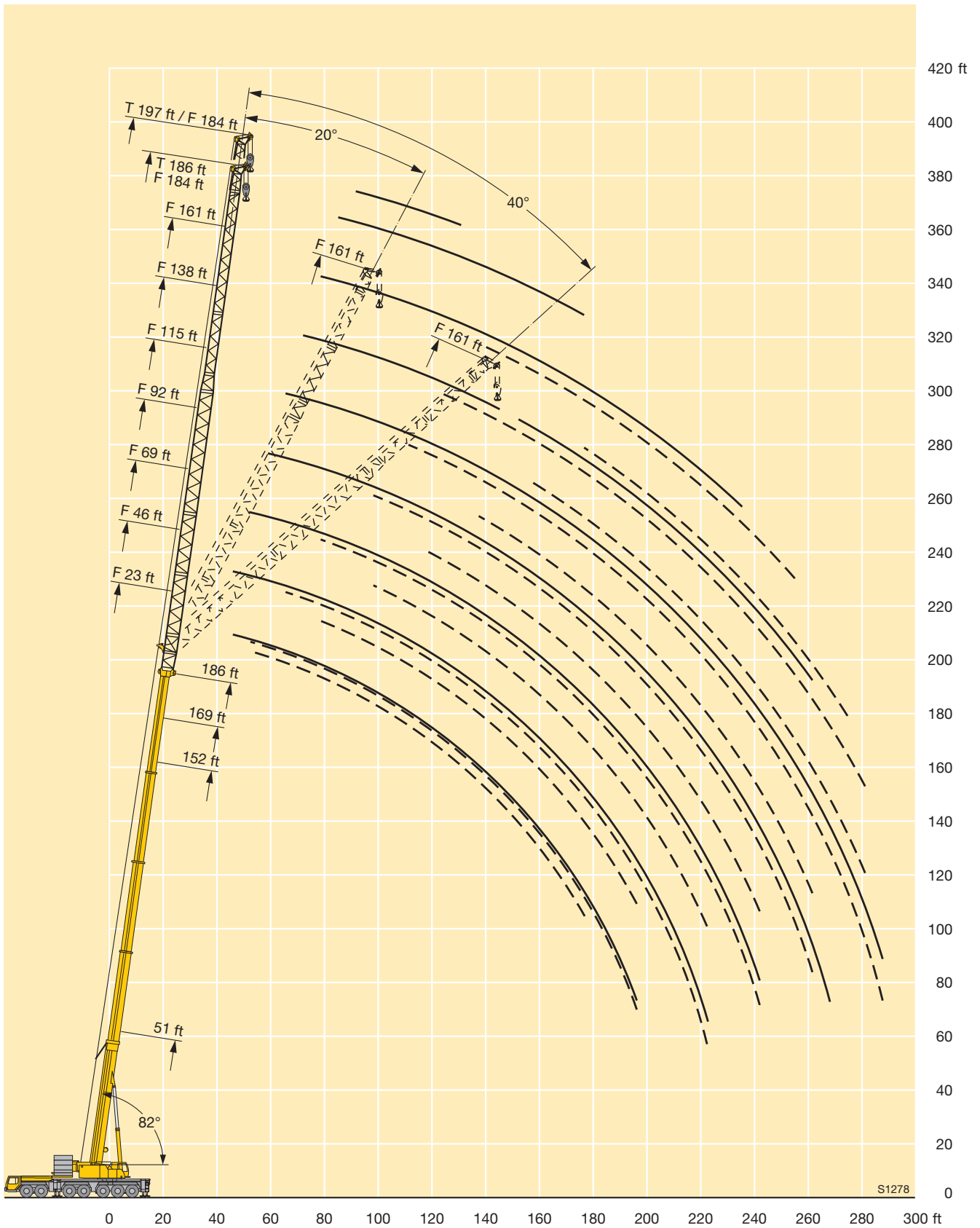


ft	186 ft + 8 ft*																		197 + 8 ft*		ft			
	23 ft			46 ft			69 ft			92 ft			115 ft			138 ft			161 ft			184 ft	184 ft	
	0°	20°	40°	0°	20°	40°	0°	20°	40°	0°	20°	40°	0°	20°	40°	0°	20°	40°	0°	20°	40°	0°	0°	
45	71			56.2																				45
50	69	58.7	42.9	55					44.1															50
55	66	57.6	42.5	53.4					43.4			34.5												55
60	62.5	55.5	41.6	51.7					42.1			34.3												60
65	59.6	53.5	40.9	49.7	44.3				40.8			33.2	26.4											65
70	56.9	51.8	40.2	47.6	43.1				39.3			32.2	25.9			20								70
75	54.3	50.3	39.6	45.7	41.8	31.8	37.9	33.4		31.2			25.3			19.8			15					75
80	51.6	48.9	39.1	43.9	40.5	31.6	36.5	33.1		30			24.7			19.3			14.9					80
85	49.1	47.5	38.6	42.2	39.4	31.1	35.1	32		28.9			24			18.9			14.5			10.7		85
90	46.7	45.8	38.1	40.5	38.3	30.7	33.8	31		27.9			23.2			18.3			14.1			10.5	9.2	90
95	44.3	43.8	37.6	38.8	37	30.3	32.5	29.9	26.2	27	23.3		22.4			17.7			13.6			10.2	9	95
100	42	41.8	37.2	37.1	35.7	29.9	31.3	29	26	26	23.1		21.6			17.2			13.2			9.9	8.7	100
105	39.9	40	36.7	35.5	34.3	29.6	30.1	28.1	25.2	25	22.3		20.8			16.7			12.8			9.5	8.2	105
110	37.9	38.3	36.6	34	33.1	29.3	29	27.2	24.6	24.1	21.6		20	17.1		16.2			12.4			9.2	7.9	110
115	35.9	36.4	36.1	32.5	31.9	28.9	28	26.4	24	23.2	20.9	18.5	19.3	16.8		15.8			12.1			8.9	7.5	115
120	34.1	34.6	35	31.1	30.7	28.6	26.9	25.5	23.3	22.3	20.3	18.3	18.6	16.4		15.4	13.8	12.6	11.7			8.6	7.2	120
125	32.3	32.9	33.2	29.6	29.4	28.3	26	24.6	22.8	21.5	19.6	17.8	17.9	15.8		14.9	11.9		11.4			8.3	6.8	125
130	30.5	31.2	31.5	28.1	28.2	28.2	25	23.8	22.2	20.7	19	17.3	17.2	15.3		14.3	11.6		11.1			8	6.5	130
135	28.9	29.6	29.9	26.7	27.1	27.3	24	23	21.7	19.9	18.4	16.9	16.6	14.8	13.1	13.8	11.4		10.8	8.4		7.7	6.2	135
140	27.4	28	28.4	25.4	26	26.2	22.9	22.3	21.2	19.2	17.9	16.5	16	14.3	12.9	13.2	11.1		10.5	8.3		7.5		140
145	26.2	26.5	26.9	24.1	24.8	25.2	21.8	21.5	20.7	18.5	17.3	16	15.4	13.8	12.6	12.7	10.9		10.2	8.1		7.2		145
150	25	25.4	25.6	22.8	23.6	24.2	20.7	20.8	20.3	17.8	16.8	15.6	14.9	13.4	12.3	12.3	10.7		9.9	7.9		7		150
155	23.8	24.3	24.4	21.6	22.4	23	19.7	20.2	19.8	17.2	16.4	15.2	14.4	13	12	11.9	10.5	8.9	9.5	7.7		6.8		155
160	22.7	23.1	23.1	20.6	21.2	21.8	18.7	19.5	19.3	16.5	15.9	14.9	13.9	12.6	11.7	11.5	10.3	8.9	9.2	7.6		6.5		160
165	21.5	21.9	21.9	19.7	20.1	20.7	17.7	18.7	18.7	15.9	15.4	14.5	13.4	12.2	11.4	11.1	10	8.8	8.8	7.4		6.2		165
170	20.4	20.8	20.7	18.9	19.1	19.7	16.7	17.9	18.1	15.1	14.9	14.2	12.9	11.9	11.1	10.7	9.7	8.7	8.4	7.2		5.9		170
175	19.3	19.7	19.5	18.1	18.2	18.8	16	16.9	17.4	14.3	14.4	13.9	12.4	11.6	10.8	10.3	9.4	8.6	8.1	7	5.8	5.6		175
180	18.3	18.7		17.3	17.2	17.8	15.4	16	16.7	13.5	13.9	13.6	12	11.3	10.6	10	9.1	8.4	7.7	6.9	5.8	5.3		180
185	17.3	17.7		16.5	16.4	16.9	14.7	15.2	16.1	12.8	13.5	13.3	11.5	11	10.4	9.6	8.9	8.2	7.4	6.7	5.7	5		185
190	16.3	16.7		15.7	15.6	16	14.1	14.6	15.5	12	13	13.1	11.1	10.8	10.2	9.3	8.7	8	7.1	6.6	5.6	4.7		190
195	15.3	15.7		15	14.7	15	13.5	13.9	14.7	11.5	12.5	12.7	10.7	10.5	10	9	8.4	7.8	6.8	6.4	5.5			195
200				14.2	13.9		12.9	13.3	14	11.1	12.1	12.3	10.2	10.2	9.8	8.7	8.2	7.6	6.5	6.2	5.5			200
205				13.4	13.2		12.4	12.7	13.3	10.6	11.7	12	9.7	9.9	9.6	8.3	7.9	7.5	6.2	5.9	5.4			205
210				12.7	12.5		11.8	12.1	12.6	10.2	11.1	11.6	9.2	9.5	9.4	8	7.7	7.3	5.9	5.7	5.3			210
215				12	11.8		11.2	11.6	11.9	9.7	10.6	11.2	8.8	9.2	9.2	7.6	7.5	7.1	5.6	5.5	5.3			215
220				11.3	11.1		10.6	11	11.3	9.3	10.1	10.7	8.4	9	9	7.2	7.3	7	5.3	5.3	5.1			220
225							10	10.4		8.9	9.7	10.1	8	8.7	8.9	6.8	7.1	6.8	5	5.1	5			225
230							9.5	9.8		8.5	9.2	9.6	7.6	8.4	8.7	6.3	6.9	6.7	4.8	4.9	4.8			230
235							8.9	9.2		8.1	8.7	9	7.3	8	8.5	5.9	6.6	6.5	4.5	4.7	4.6			235
240							8.4	8.6		7.6	8.3	8.5	6.8	7.6	8.1	5.5	6.4	6.4	4.1	4.5	4.5			240
245										7.2	7.8		6.4	7.2	7.7	5.1	6.2	6.2		4.3	4.3			245
250										6.8	7.3		6	6.8	7.2	4.8	6	6.2		4.1	4.1			250
255										6.4	6.8		5.6	6.4	6.7	4.4	5.6	6.1		3.9	4			255
260										5.9	6.4		5.1	5.9	6.2	4	5.1	5.9		3.7	3.9			260
265										5.5			4.7	5.4		3.6	4.7	5.5		3.5	3.8			265
270													4.2	5			4.3	5			3.7			270
275													3.8	4.5			3.9	4.5			3.6			275
280													3.4	4			3.5	3.9			3.4			280
285													3	3.5										285

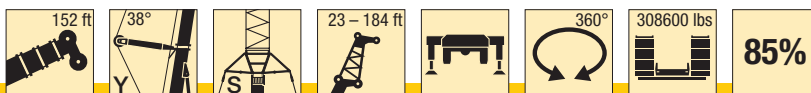
\* adapter / pièce d'adaptateur

TAB 146444 / 146450 / 146456

# Hubhöhen Lifting heights



# Lifting capacities on the lattice fly jib with guyed telescopic boom Forces de levage à la fléchette treillis fixe avec flèche télescopique haubanée

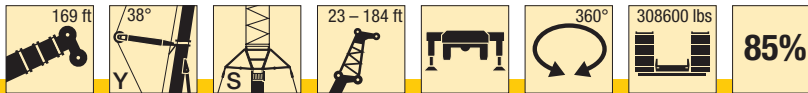


ft	152 ft + 8 ft*																			ft				
	23 ft			46 ft			69 ft			92 ft			115 ft			138 ft			161 ft			184 ft		
	0°	20°	40°	0°	20°	40°	0°	20°	40°	0°	20°	40°	0°	20°	40°	0°	20°	40°	0°	20°	40°	0°		
38	119			99																			38	
40	117			98.5																			40	
45	109	62.5		92			75			56.6													45	
50	102	60		87			72.5			54.6			42.1										50	
55	96	57.7	42.8	82	51.4		69.5			52.2			41.3			31.7							55	
60	90	55.4	41.9	77.5	49.3		66.5			50.1			39.6			31.5							60	
65	85	53.3	41	73	47.4	34.4	63	47.1		48.2			38.1			30.3			24.7				65	
70	80	51.4	40.3	68.5	45.7	33.7	59.5	45.9		46.4			36.6			29.1			23.8			18.7	70	
75	74.5	49.6	39.6	64.5	44.1	33	56.2	44.7		44.7	32.1		35.2			28			22.9			18.3	75	
80	69.5	48	38.9	61	42.6	32.3	53.2	43.4	32.5	43.1	31.8		33.9			26.9			22			17.6	80	
85	65.5	46.6	38.3	57.6	41.2	31.7	50.5	42.2	31.8	41.5	30.9		32.7			25.8			21.2			16.8	85	
90	62	45.3	37.7	54.4	39.9	31.2	48	40.9	31.1	39.9	30		31.5	23.2		24.9			20.4			16.2	90	
95	58.5	44.1	37.3	51.3	38.7	30.6	45.7	39.7	30.5	38.4	29.1	22.8	30.5	22.7		24			19.6			15.5	95	
100	55.2	42.9	37	48.4	37.5	30.1	43.3	38.5	29.9	36.8	28.3	22.7	29.4	22		23.2	16.7		18.9			14.8	100	
105	52	41.8	36.6	45.7	36.6	29.7	40.9	37.4	29.4	35.5	27.6	22.3	28.1	21.3		22.4	16.7		18.2			14.2	105	
110	49	40.8	36.3	43	35.6	29.4	38.6	36.3	28.9	34.1	26.9	21.9	27	20.7		21.6	16.1		17.6			13.7	110	
115	46.5	39.7	36.1	40.8	34.8	29.1	36.6	35.2	28.4	32.5	26.2	21.5	26	20.2	15.7	20.8	15.6		16.9	11.9		13.1	115	
120	44.4	39	35.8	38.9	33.9	28.8	34.8	34	28	30.9	25.5	21.1	25.1	19.6	15.6	19.9	15.1		16.3	11.8		12.6	120	
125	42.3	38.6	35.5	37	33.1	28.5	33.1	32.4	27.6	29.3	24.9	20.8	24.3	19	15.2	19.1	14.6		15.7	11.4		12.1	125	
130	40.4	38.2	35.5	35.3	32.3	28.3	31.5	31	27.3	27.9	24.4	20.5	23.5	18.5	14.9	18.2	14.2		15	11		11.6	130	
135	38.5	37.9	35.5	33.6	31.6	28	30	29.6	27	26.5	23.9	20.1	22.7	18	14.6	17.6	13.7		14.3	10.6		11.1	135	
140	36.6	37.1	35.5	31.9	31	27.8	28.5	28.3	26.8	25.1	23.5	19.9	22	17.5	14.4	17	13.3	10.5	13.7	10.3		10.7	140	
145	34.9	35.7	35.2	30.3	30.6	27.6	27	27	26.5	23.8	23	19.7	21.3	17.1	14.1	16.4	12.9	10.4	13.3	10		10.3	145	
150	33.4	34.3	33.7	28.8	29.4	27.6	25.6	25.7	25.7	22.5	22.6	19.5	20.6	16.7	13.9	15.9	12.5	10.2	12.9	9.7		9.9	150	
155	32	32.8	32.3	27.6	28.2	27.5	24.5	24.5	24.6	21.5	21.8	19.3	19.7	16.4	13.7	15.4	12.1	10	12.5	9.4		9.5	155	
160	30.8	31.5		26.6	27.1	26.9	23.4	23.5	23.5	20.5	20.9	19.1	18.7	16	13.4	14.9	11.8	9.9	12.1	9.1	7.1		9.2	160
165				25.5	26	25.8	22.4	22.5	22.5	19.6	19.9	19	17.7	15.7	13.2	14.4	11.6	9.7	11.7	8.9	7		8.9	165
170				24.6	25	24.8	21.5	21.6	21.7	18.7	19	18.8	16.7	15.4	13.1	13.9	11.4	9.5	11.3	8.6	6.9		8.6	170
175				23.6	24	23.8	20.5	20.8	20.8	17.8	18.1	18.5	15.7	15.1	13	13.5	11.1	9.4	10.9	8.4	6.8		8.2	175
180				22.7	23		19.6	19.9	20	17	17.3	17.9	15	14.8	12.9	13	10.9	9.3	10.6	8.2	6.6		8	180
185				21.8			18.7	19.1	19.2	16.2	16.6	17.2	14.5	14.5	12.8	12.6	10.7	9.2	10.3	8	6.5		7.7	185
190				20.9			18	18.3	18.5	15.5	16	16.5	13.9	14.2	12.6	12.1	10.5	9	9.9	7.8	6.3		7.4	190
195							17.2	17.5	17.7	15	15.4	15.8	13.4	13.6	12.5	11.4	10.3	8.9	9.6	7.6	6.3		7.1	195
200							16.6	16.8		14.4	14.8	15.1	12.9	13.1	12.4	10.9	10.1	8.8	9.3	7.5	6.2		6.9	200
205							16	16.1		13.9	14.2	14.5	12.4	12.6	12.3	10.5	9.9	8.7	9	7.3	6.1		6.6	205
210										13.3	13.6	13.9	11.9	12.1	12.3	10.1	9.7	8.6	8.7	7.1	6		6.3	210
215										12.8	13.1	13.3	11.5	11.6	11.8	9.7	9.6	8.5	8.4	7	5.9		6.1	215
220										12.3	12.5		11	11.2	11.3	9.4	9.5	8.4	8.1	6.8	5.8		5.8	220
225										11.9	12		10.6	10.8	10.8	9	9.4	8.4	7.9	6.7	5.7		5.6	225
230										11.3			10.1	10.3	10.4	8.7	9.1	8.4	7.5	6.5	5.6		5.4	230
235										10.9			9.7	9.9	9.9	8.3	8.7	8.4	7.1	6.3	5.5		5.2	235
240													9.3	9.5	9.5	8	8.3	8.4	6.8	6.2	5.4		4.9	240
245													8.9	9		7.6	7.9	8.2	6.4	6.2	5.4		4.6	245
250													8.5	8.6		7.3	7.6	7.8	6.1	6.1	5.4		4.3	250
255													8.1	8.3		7	7.2	7.4	5.7	6	5.4		3.9	255
260																6.7	6.9	7	5.4	5.8	5.4		3.6	260
265																6.4	6.5		5.1	5.5	5.4			265
270																6.1	6.2		4.7	5.1	5.3			270
275																5.8	5.9		4.4	4.8	5.2			275
280																5.5			4.1	4.4	4.8			280
285																			3.8	4.1				285
290																			3.5	3.8				290
295																			3.2	3.4				295
300																			2.8	3.1				300

\* adapter / pièce d'adaptateur

TAB 146462 / 146472 / 146482

# Lifting capacities on the lattice fly jib with guyed telescopic boom Forces de levage à la fléchette treillis fixe avec flèche télescopique haubanée

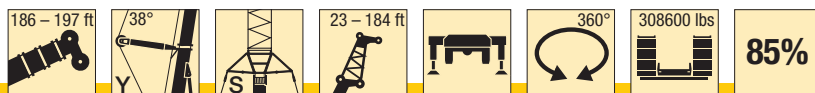


ft	169 ft + 8 ft*																					ft	
	23 ft			46 ft			69 ft			92 ft			115 ft			138 ft			161 ft				184 ft
	0°	20°	40°	0°	20°	40°	0°	20°	40°	0°	20°	40°	0°	20°	40°	0°	20°	40°	0°	20°	40°	0°	
38	113			94.5																			38
40	112			94																			40
45	104	63		88			72.5																45
50	97	61		82.5			70			52.4				40.6									50
55	90.5	58.6	43.2	77.5	51.5		66.5			51.5			39.9			30.6							55
60	85	56.4	42.3	72.5	49.6		62.5			49.7			38.4			30.4							60
65	80	54.5	41.4	68.5	47.8	34.4	59.3	46.7		47.9			37			29.3			23.8				65
70	75	52.7	40.7	64.5	46.2	33.8	56.1	45.6		46.2			35.7			28.3			23.1			18	70
75	71	51	40.1	61	44.7	33.2	53.2	44.4		44.6	31.8		34.5			27.3			22.2			17.6	75
80	66.5	49.4	39.4	57.7	43.3	32.5	50.5	43.3		43.2	31.6		33.3			26.4			21.4			17	80
85	62.5	47.9	38.8	54.5	41.9	32	47.9	42.2	31.7	41.8	30.7		32.1			25.5			20.7			16.3	85
90	58.9	46.5	38.3	51.5	40.7	31.5	45.5	41.1	31.1	40	29.9		31.1			24.7			19.9			15.7	90
95	55.7	45.3	37.8	48.9	39.5	31	43.2	39.9	30.5	38.1	29.1		30.1	22.2		23.8			19.2			15	95
100	52.8	44.2	37.3	46.5	38.4	30.5	41	38.8	30	36.3	28.3	22.2	29.2	22		23.1			18.5			14.4	100
105	50	43.1	37	44.1	37.3	30	38.8	37.7	29.5	34.5	27.6	22.2	28.2	21.3		22.4			17.9			13.9	105
110	47.5	42.2	36.8	41.9	36.5	29.6	37.1	36.4	29.1	32.8	26.9	21.8	27.3	20.7		21.7	15.9		17.3			13.3	110
115	45.1	41.2	36.5	39.7	35.6	29.3	35.4	34.8	28.6	31.4	26.3	21.5	26.3	20.2		21	15.5		16.7			12.9	115
120	42.7	40.3	36.3	37.7	34.9	29	33.7	33	28.2	30	25.7	21.1	25.3	19.6	15.2	20.3	15		16.1	11.4		12.4	120
125	40.4	39.4	36.1	35.7	34.1	28.8	32.1	31.5	27.8	28.7	25.1	20.8	24.4	19.1	15.2	19.5	14.6		15.6	11.3		11.9	125
130	38.2	38.1	35.8	33.8	33.4	28.5	30.5	30.1	27.4	27.5	24.5	20.5	23.7	18.6	14.9	18.7	14.1		15.1	10.9		11.4	130
135	36.6	36.7	35.6	32	32.1	28.3	29	28.7	27.2	26.2	24	20.2	22.8	18.2	14.6	18	13.8		14.5	10.6		11	135
140	35.3	35.3	34.9	30.3	30.6	28.1	27.5	27.4	26.7	24.9	23.5	19.9	21.8	17.7	14.4	17.4	13.4	10.4	13.9	10.3		10.6	140
145	33.9	33.9	33.6	28.7	29.1	27.8	26.1	26.1	26.1	23.7	23.1	19.7	20.9	17.3	14.2	16.9	13	10.4	13.3	10		10.2	145
150	32.7	32.6	32.3	27.6	27.6	27.5	24.7	24.9	24.9	22.5	22.2	19.5	19.9	16.8	13.9	16.4	12.6	10.2	12.9	9.7		9.8	150
155	31.5	31.3	31	26.6	26.6	26.5	23.4	23.7	23.8	21.3	21.3	19.4	19	16.5	13.7	15.9	12.3	10	12.5	9.4		9.4	155
160	30.3	30.1	29.8	25.6	25.6	25.5	22.2	22.6	22.7	20.2	20.3	19.2	18	16.2	13.5	15.4	12	9.9	12.2	9.2		9.1	160
165	29.1	28.9	28.6	24.6	24.7	24.6	21.1	21.4	21.7	19.1	19.3	19.1	17.1	15.9	13.3	15	11.6	9.7	11.8	8.9		8.8	165
170	28	27.8	27.4	23.7	23.8	23.6	20.3	20.4	20.7	18	18.4	19	16.2	15.6	13.2	14.6	11.4	9.6	11.5	8.7	6.9	8.5	170
175	26.9	26.7		22.8	22.9	22.7	19.6	19.5	19.8	17	17.5	18.2	15.4	15.3	13.1	14	11.2	9.4	11.1	8.4	6.7	8.2	175
180	25.8	25.6		21.9	22	21.8	18.9	18.8	19	16.2	16.7	17.4	14.5	15	13	13.4	11	9.3	10.8	8.2	6.6	7.9	180
185				21	21.2	21	18.2	18.1	18.2	15.6	15.8	16.6	13.7	14.6	12.9	12.7	10.8	9.2	10.5	8	6.5	7.7	185
190				20.2	20.4	20.1	17.5	17.4	17.5	15	15	15.8	12.9	14	12.8	12.1	10.6	9.1	10.2	7.9	6.4	7.4	190
195				19.4	19.6		16.9	16.8	16.8	14.5	14.4	15.1	12.1	13.3	12.6	11.5	10.5	9	9.8	7.7	6.3	7.2	195
200				18.5	18.9		16.2	16.1	16.1	13.9	13.8	14.5	11.5	12.6	12.5	10.9	10.3	8.9	9.4	7.5	6.2	6.9	200
205							15.6	15.5	15.5	13.4	13.3	13.9	11.1	11.9	12.3	10.3	10.1	8.8	8.9	7.4	6.1	6.6	205
210							15	14.9		12.9	12.7	13.3	10.7	11.4	11.9	9.7	9.9	8.7	8.3	7.2	6	6.4	210
215							14.4	14.3		12.4	12.2	12.7	10.3	11	11.4	9.3	9.8	8.6	7.9	7.1	5.9	6.1	215
220							13.9	13.7		11.9	11.7	12.2	10	10.5	10.9	8.9	9.5	8.5	7.4	6.9	5.8	5.7	220
225							13.3			11.4	11.3	11.7	9.6	10.1	10.4	8.6	9.1	8.4	6.9	6.8	5.7	5.3	225
230										11	10.8		9.2	9.7	9.9	8.2	8.6	8.3	6.5	6.6	5.6	4.8	230
235										10.5	10.4		8.9	9.3	9.5	7.9	8.2	8.3	6.1	6.5	5.6	4.4	235
240										10.1	9.9		8.5	8.8	9	7.5	7.8	8.2	5.7	6.4	5.5	4.1	240
245										9.7	9.5		8.2	8.4	8.6	7.2	7.4	7.9	5.4	6.2	5.4		245
250													7.9	8.1	8.2	6.9	7	7.5	5	5.9	5.3		250
255													7.6	7.7	7.8	6.5	6.7	7.1	4.7	5.5	5.3		255
260													7.2	7.4		6.2	6.4	6.7	4.4	5.1	5.3		260
265													6.9	7		5.9	6.1	6.3	4	4.7	5.3		265
270													6.6			5.5	5.7	6	3.7	4.4	5.1		270
275													6.3			5.2	5.4	5.6	3.4	4.1	4.7		275
280																4.9	5.1		3.1	3.8	4.3		280
285																4.6	4.7			3.4	3.9		285
290																4.2	4.4				3.5		290
295																3.9	4.1				3.2		295

\* adapter / pièce d'adaptateur

TAB 146462 / 146472 / 146482

# Lifting capacities on the lattice fly jib with guyed telescopic boom Forces de levage à la fléchette treillis fixe avec flèche télescopique haubanée

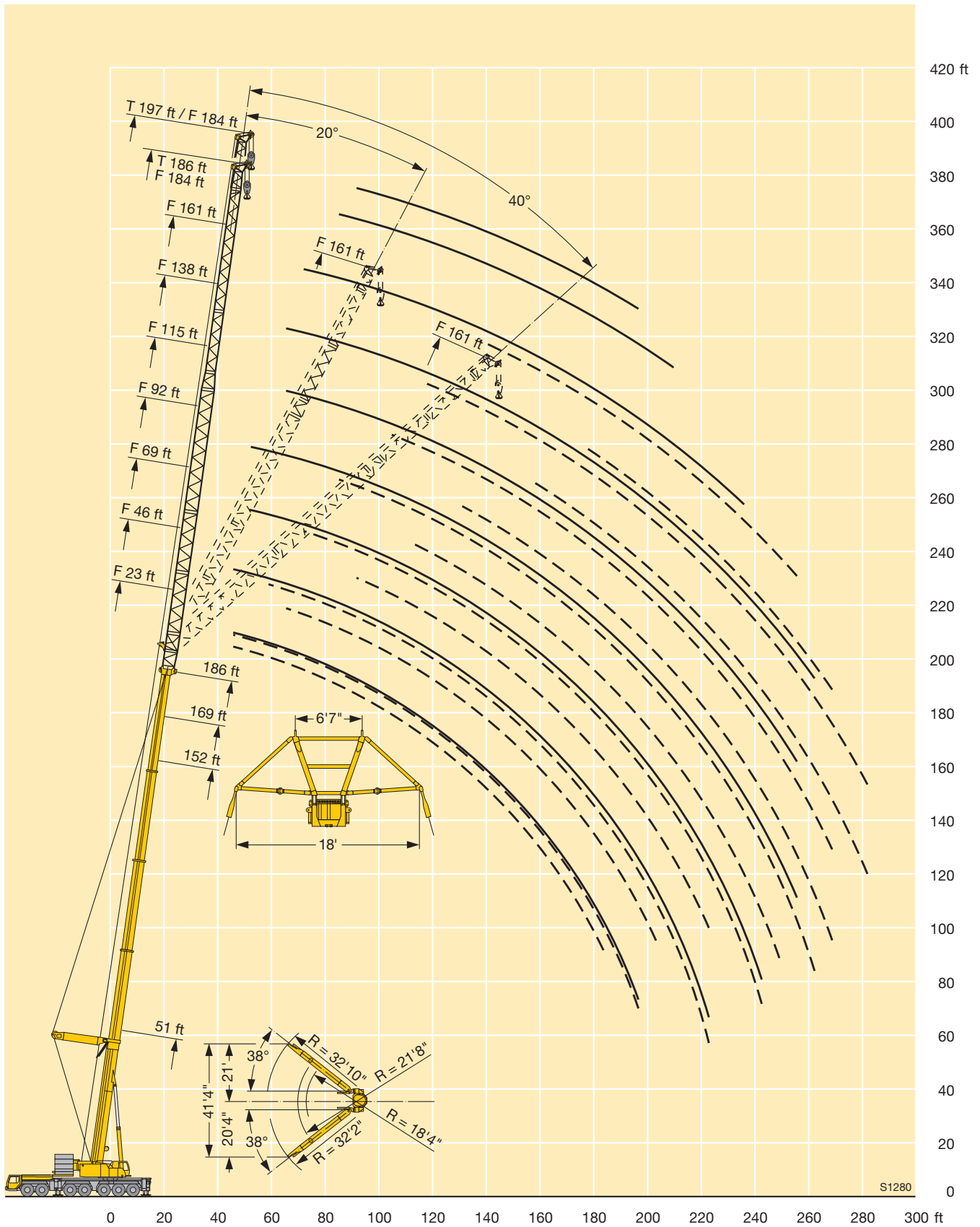


ft	186 ft + 8 ft*																		197 + 8 ft*		ft			
	23 ft			46 ft			69 ft			92 ft			115 ft			138 ft			161 ft			184 ft	184 ft	
	0°	20°	40°	0°	20°	40°	0°	20°	40°	0°	20°	40°	0°	20°	40°	0°	20°	40°	0°	20°	40°	0°	0°	
38	100																							38
40	99																							40
45	92.5	63		76.5			64.5																	45
50	87	61		73			61.5			49.5														50
55	81.5	58.9	43.3	69	49.5		58.2			48.7			36.7											55
60	76.5	56.8	42.5	65	49.2		55.2			47			36.4											60
65	72	54.9	41.7	61.5	47.5	34.4	52.4			45.1			35.2			28.4								65
70	68	53.2	41	58.1	46	33.8	49.7	44.2		43			34.1			27.6			21.6					70
75	64	51.6	40.4	55	44.6	33.2	47.1	43.6		41			33			26.7			21.2					75
80	60.5	50.1	39.8	52.1	43.2	32.6	44.7	42.5		38.9			32			25.9			20.5					80
85	57.2	48.7	39.2	49.4	42	32	42.5	41.3		37	30.1		30.9			25.1			19.8			15.4		85
90	54	47.3	38.7	46.8	40.9	31.5	40.5	39.8	30.6	35.3	29.4		30			24.3			19.1			14.9	14	90
95	51.2	46.1	38.2	44.4	39.8	31.1	38.5	38.1	30.3	33.7	28.7		28.9			23.5			18.5			14.4	13.7	95
100	48.6	44.9	37.7	42.1	38.7	30.6	36.6	36.4	29.8	32.1	28		27.6	21.1		22.8			17.8			13.9	13.2	100
105	46.1	43.9	37.2	40.2	37.8	30.2	34.7	34.8	29.3	30.6	27.3		26.4	21.1		22.1			17.2			13.3	12.7	105
110	43.7	42.7	37	38.4	36.8	29.8	33	33.2	28.9	29.2	26.7	21.5	25.2	20.5		21.5			16.7			12.9	12.2	110
115	41.4	40.9	36.7	36.6	35.4	29.5	31.5	31.6	28.5	27.8	26.1	21.3	24	19.9		20.8	15.1		16.2			12.4	11.8	115
120	39.2	38.9	36.5	34.8	33.8	29.1	30.1	30	28.2	26.4	25.5	21	22.9	19.4		20.2	14.9		15.6			11.9	11.4	120
125	37.2	36.9	36.2	33.1	32.2	28.8	28.8	28.5	27.8	25.2	25	20.6	21.8	19		19.5	14.4		15.2			11.5	11	125
130	35.1	35.1	35	31.4	30.7	28.6	27.5	27.2	27	24.1	24.1	20.4	20.8	18.5	14.7	18.6	14.1		14.7			11.1	10.6	130
135	33.2	33.3	33.4	29.8	29.3	28.4	26.2	26	25.8	23.1	23	20.1	19.8	18.1	14.5	17.7	13.7		14.2	10.4		10.7	10.2	135
140	31.5	31.6	31.8	28.2	28	27.8	24.8	24.8	24.7	22.1	21.9	19.9	18.8	17.6	14.3	16.9	13.3		13.8	10.3		10.3	9.9	140
145	30.3	29.9	30.2	26.7	26.6	26.5	23.6	23.7	23.6	21.1	20.7	19.6	18	17.2	14.1	16.1	13		13.3	10		9.9	9.5	145
150	29	28.8	29	25.3	25.4	25.3	22.3	22.6	22.5	20.1	19.8	19.4	17.2	16.8	13.9	15.4	12.7		12.7	9.7		9.6	9.1	150
155	27.9	27.7	27.8	23.8	24.1	24.1	21.2	21.5	21.5	19	18.9	19.2	16.4	16.4	13.7	14.7	12.3	9.9	12.2	9.5		9.2	8.7	155
160	26.8	26.6	26.6	22.7	22.9	23	20	20.5	20.6	18.1	18	18.6	15.7	16.1	13.5	14	12	9.8	11.7	9.2		8.9	8.4	160
165	25.7	25.5	25.5	21.8	21.8	21.9	18.9	19.5	19.6	17.1	17.2	17.8	14.9	15.7	13.3	13.4	11.7	9.7	11.1	9		8.5	8	165
170	24.6	24.5	24.4	21	20.8	21	17.8	18.6	18.7	16.2	16.3	17	14.2	15.1	13.1	12.7	11.4	9.5	10.6	8.7		8.3	7.6	170
175	23.5	23.5	23.3	20.2	19.9	20.1	17.1	17.6	17.8	15.3	15.6	16.3	13.6	14.4	13	12.1	11.2	9.4	10	8.5	6.7	7.9	7.2	175
180	22.5	22.5	22.3	19.4	19	19.3	16.4	16.7	17	14.5	14.8	15.5	12.9	13.7	12.9	11.6	11	9.3	9.5	8.3	6.6	7.4	6.7	180
185	21.6	21.6		18.6	18.2	18.5	15.8	15.9	16.2	13.6	14	14.8	12.2	13.1	12.8	11	10.8	9.2	9	8	6.5	7	6.2	185
190	20.6	20.6		17.9	17.4	17.6	15.2	15.3	15.5	12.8	13.3	14.1	11.5	12.5	12.8	10.4	10.7	9.1	8.5	7.8	6.3	6.5	5.8	190
195	19.7	19.8		17.2	16.6	16.9	14.6	14.7	14.9	12.3	12.5	13.4	10.9	11.9	12.3	9.9	10.5	9	8	7.7	6.2	6.1	5.3	195
200				16.5	15.9	16.1	14	14.1	14.3	11.8	12	12.7	10.2	11.3	11.7	9.3	10.2	8.9	7.5	7.5	6.1	5.6	4.9	200
205				15.8	15.3		13.4	13.6	13.7	11.4	11.5	12.1	9.6	10.8	11.2	8.8	9.7	8.9	7.1	7.4	6	5.2		205
210				15.1	14.6		12.9	13.1	13.1	10.9	11.1	11.6	9.2	10.2	10.7	8.3	9.3	8.8	6.6	7.3	6	4.8		210
215				14.5	14		12.4	12.5	12.5	10.5	10.6	11.1	8.9	9.7	10.2	7.8	8.8	8.7	6.2	7.1	5.9	4.4		215
220				13.8	13.5		11.8	12	12	10.1	10.2	10.6	8.5	9.2	9.7	7.3	8.4	8.6	5.7	6.9	5.8			220
225							11.3	11.5		9.7	9.8	10.2	8.1	8.8	9.2	6.9	7.9	8.4	5.3	6.5	5.7			225
230							10.8	11		9.3	9.4	9.7	7.7	8.4	8.7	6.5	7.4	8	4.9	6.1	5.6			230
235							10.3	10.6		8.9	9	9.3	7.3	8	8.3	6.1	7	7.6	4.5	5.7	5.6			235
240							9.9	10.1		8.5	8.6	8.8	7	7.6	7.9	5.7	6.6	7.2	4.1	5.3	5.5			240
245										8.2	8.2	8.4	6.6	7.2	7.5	5.3	6.2	6.8		4.9	5.4			245
250										7.8	7.8		6.2	6.8	7.1	5	5.8	6.4		4.5	5.4			250
255										7.4	7.4		5.8	6.4	6.7	4.6	5.4	6		4.1	5.1			255
260										7.1	7		5.5	6.1	6.3	4.3	5	5.6		3.8	4.7			260
265										6.7			5.1	5.7	5.9	3.9	4.6	5.1			4.3			265
270													4.8	5.3		3.6	4.2	4.7			3.9			270
275													4.4	5		3.2	3.9	4.3			3.5			275
280													4.1	4.6			3.5	3.9						280
285													3.8	4.2			3.2	3.5						285

\* adapter / pièce d'adaptateur

TAB 146462 / 146472 / 146482

# Lifting heights Hauteurs de levage



## Lifting capacities on the luffing lattice jib Forces de levage à la flèche treillis relevable



ft	51 ft + 13 ft*											84 ft + 13 ft*											ft	
	ft											ft												
	46	69	92	115	138	161	184	207	230	253	276	46	69	92	115	138	161	184	207	230	253	276		
22	262																						22	
24	262																						24	
26	262																						26	
28	262																						28	
30	262										214												30	
32	262	220									214												32	
34	260	219									214												34	
36	256	217									214												36	
38	253	215	170								214	157											38	
40	247	212	169								214	157											40	
45	223	204	166	133							212	157	127										45	
50		195	163	132							194	157	127										50	
55		181	160	130	106							157	127	103									55	
60		165	157	128	104	87						156	127	102	83								60	
65		151	150	126	103	86						145	127	102	82.5	68							65	
70		139	139	125	102	85	69					134	126	101	82	68							70	
75			129	122	100	84	68.5	57.7					121	101	81.5	67.5	55.3						75	
80			120	118	99.5	83	68	57.5					113	101	81.5	67	55.2						80	
85			112	110	98.5	82	67	56.9	46.8				106	101	81	67	54.9	45.9					85	
90			104	103	98	81	66.5	56.3	46.3	39.1			100	96	80.5	66.5	54.6	45.6	37.3				90	
95				97	95	80.5	66	55.8	45.9	38.7	31.4			94	91	80.5	66.5	54.3	45.4	37.1	31		95	
100				91.5	90	80	65.5	55.3	45.4	37.9	31.3				86	80	66	54	45.1	36.8	30.9	24.7	100	
105				86	85	79.5	64.5	54.8	45	37.1	30.9				82	79	66	53.8	44.9	36.6	30.7	24.7	105	
110				81.5	80.5	78.5	64	54.4	44.5	36.4	30.5				77.5	75	66	53.6	44.7	36.4	30.6	24.5	110	
115				71	76	75.5	64	53.9	44.1	35.6	30.1				73.5	71.5	66	53.4	44.5	36.2	30.4	24.3	115	
120					72.5	71.5	63.5	53.4	43.8	34.9	29.6					68.5	65	53.3	44.3	36	30.2	24.1	120	
125					68.5	68	63	52.9	43.4	34.2	29.1					65.5	63	53.3	44.2	35.9	30	24	125	
130					65.5	65	62	52.1	43.1	33.6	28.6					62.5	60	53.2	44.1	35.7	29.8	23.8	130	
135					60.5	62	60	51.3	42.8	32.9	28.1					59.5	57.8	52.9	44.1	35.5	29.5	23.6	135	
140						59	57.7	50.6	42.7	32.3	27.7					56.8	55.5	52.2	44.1	35.4	29.2	23.5	140	
145						56.4	55.1	49.8	42.6	31.7	27.2						53.3	51.2	44.1	35.3	28.8	23.3	145	
150						54	52.7	49.1	42.5	31.2	26.8						51	49.4	44.1	35.3	28.5	23.2	150	
155						51	50.5	48.4	42.3	30.6	26.4						48.9	47.6	44.1	35.3	28.1	23.1	155	
160						45.2	48.4	47.3	42	30.1	26						46.9	45.8	43.5	35.3	27.8	23	160	
165						46.4	45.8	41.6	29.6	25.6							44	42.3	35.3	27.5	22.8		165	
170						44.6	43.9	41.2	29.1	25.3								42.2	40.8	35.3	27.2	22.8	170	
175						42.7	42.2	40.4	28.6	25								40.6	39.4	35.3	26.9	22.8	175	
180						39.7	40.5	39.2	28.2	24.7								39	37.9	35.2	26.6	22.7	180	
185							39	37.7	27.8	24.4								37.5	36.5	34.6	26.3	22.5	185	
190							37.5	36.2	27.4	24.1								36.1	35.1	33.4	26	22.4	190	
195								36.1	34.8	27.1	23.8								33.8	32.3	25.7	22.2	195	
200								33.9	33.5	26.7	23.5								32.5	31.1	25.5	22.1	200	
205									32.3	26.5	23.2								31.3	29.9	25.2	21.9	205	
210									31.1	26.2	23									28.8	25	21.7	210	
215									29.9	26	22.7									27.7	24.8	21.6	215	
220									28.2	25.8	22.5										26.7	24.7	21.4	220
225									25.7	25.6	22.3										25.7	24.4	21.3	225
230										25.4	22.1										24.8	23.8	21.2	230
235										24.9	22										23.9	22.9	21.1	235
240										23.5	21.8											22.1	20.9	240
245										21.7	21.6											21.3	20.4	245
250											21.1											20.5	19.6	250
255											20.3											19.8	18.8	255
260											19.3												18.1	260
265											17.8												17.4	265
270											15.7												16.8	270
275											13												16.1	275
280																							15.3	280

\* adapter / pièce d'adaptateur

TAB 146494

## Lifting capacities on the luffing lattice jib Forces de levage à la fléchette treillis relevable

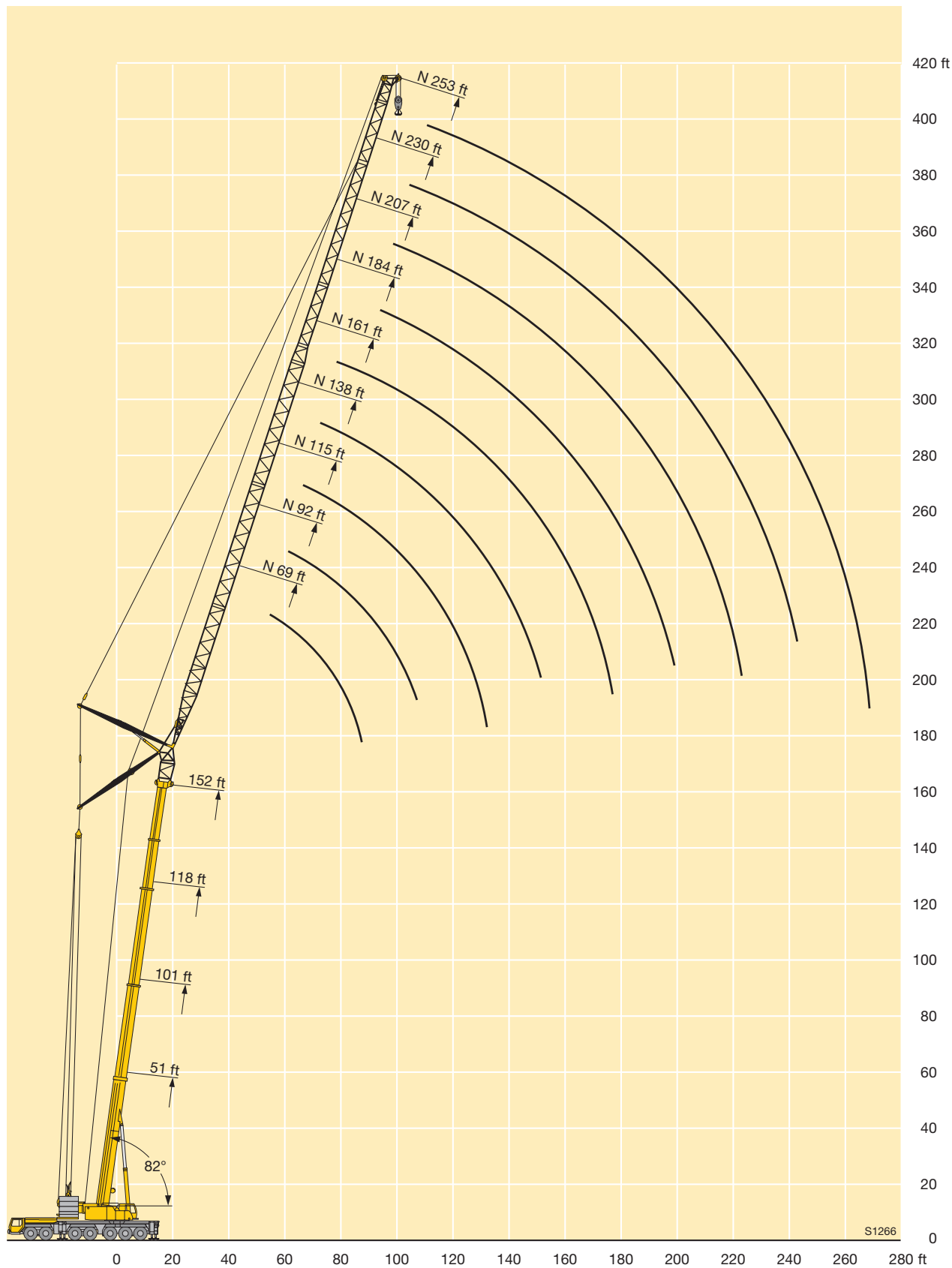


ft	118 ft + 13 ft*										152 ft + 13 ft*							186 ft + 13 ft*						ft		
	ft										ft							ft								
	69	92	115	138	161	184	207	230	253	276	69	92	115	138	161	184	207	230	253	69	92	115	138		161	184
45	106																									45
50	106																									50
55	106	86	69							66.5																55
60	105	85.5	69							66.5	52.5										39					60
65	103	85	69	56						66	52.5	42.2									38.8	29.4				65
70	100	84.5	68.5	55.8	46.1					65	52.4	42.1	33.8								38.7	29.3				70
75	98	83.5	68.5	55.6	46					64	52.2	41.9	33.7	27							38.6	29.2	22.7			75
80		82	68	55.4	45.9					63	51.9	41.7	33.5	27							38.4	29	22.5	17.2		80
85		80.5	68	55.2	45.7	37.2				62	51.4	41.6	33.4	26.9							38.2	28.9	22.4	17.1	12.1	85
90		79	67.5	55	45.5	37	30.5			50.8	41.4	33.3	26.8	21.1							37.8	28.8	22.3	17	12.1	90
95		78	66.5	54.9	45.3	36.9	30.4	24.5		50.2	41.2	33.2	26.7	21.1	15						28.7	22.2	16.9	12.1	6.8	95
100		77	65.5	54.8	45.2	36.8	30.3	24.4	18.9	49.6	40.8	33.1	26.7	21.1	15	9.5					28.6	22	16.8	12.1	6.8	100
105			64.5	54.8	45	36.6	30.2	24.3	18.9		40.5	32.9	26.6	21	15	9.5					28.5	21.9	16.7	12.1	6.8	105
110			63.5	54.4	44.9	36.5	30.1	24.2	18.9	12.9	40.1	32.7	26.5	20.9	15	9.5	5.3				28.4	21.8	16.6	12.1	6.8	110
115			63	53.8	44.8	36.4	30	24	18.9	12.9	39.8	32.5	26.4	20.9	15	9.5	5.3					21.8	16.5	12.1	6.8	115
120			63	53.1	44.8	36.3	29.9	23.9	18.8	12.9	39.4	32.3	26.3	20.8	15	9.5	5.3					21.7	16.4	12.1	6.8	120
125				52.4	44.7	36.2	29.8	23.8	18.7	12.9	39	32.1	26.2	20.7	15	9.5	5.3					21.6	16.4	12.1	6.8	125
130				52	44.6	36.2	29.6	23.7	18.6	12.9	38.5	31.9	26.1	20.7	15	9.5	5.3					21.6	16.3	12.1	6.8	130
135				51.7	44.1	36.1	29.6	23.6	18.5	12.8		31.7	25.9	20.6	15	9.5	5.3					21.5	16.2	12.1	6.8	135
140				51.4	43.7	36.1	29.5	23.5	18.4	12.8		31.4	25.7	20.6	15	9.5	5.3					16.2	12.1	6.8	140	
145				50.8	43.2	36	29.5	23.4	18.3	12.8		31.1	25.6	20.5	15	9.5	5.3					16.1	12.1	6.8	145	
150				49	43.1	35.9	29.5	23.4	18.2	12.7		30.8	25.4	20.4	15	9.5	5.3					16.1	12.1	6.8	150	
155				43	35.7	29.5	23.4	18.2	12.7				25.3	20.3	15	9.5	5.3					16.1	12.1	6.8	155	
160				42.7	35.4	29.5	23.4	18.2	12.6				25.1	20.2	15	9.5	5.3					12.1	6.8	160		
165				42	35.1	29.5	23.4	18.2	12.6				25	20.1	15	9.5	5.3					12	6.8	165		
170				40.6	35.1	29.5	23.4	18.2	12.6				24.8	20.1	15	9.5	5.3					12	6.8	170		
175					35.1	29.5	23.4	18.2	12.6				24.7	20	15	9.5	5.3					12	6.8	175		
180					35	29.5	23.4	18.2	12.6					19.9	15	9.5	5.3						6.8	180		
185					34.5	29.4	23.4	18.2	12.6					19.8	15	9.5	5.3						6.8	185		
190					33.4	29.4	23.4	18.2	12.6					19.7	15	9.5	5.3						6.8	190		
195					29.4	23.4	18.2	12.6						19.6	15	9.5	5.3						6.8	195		
200					29.4	23.4	18.2	12.6							15	9.5	5.3						6.8	200		
205					29.1	23.4	18.2	12.6							15	9.5	5.3							205		
210					28.2	23.4	18.2	12.6							15	9.5	5.3							210		
215					27.3	23.4	18.2	12.6							15	9.5	5.3							215		
220						23.4	18.2	12.6							15	9.5	5.3							220		
225						23.3	18.2	12.6								9.5	5.3							225		
230						23	18.2	12.6								9.5	5.3							230		
235						22.2	18.2	12.6								9.5	5.3							235		
240							18.2	12.6								9.5	5.3							240		
245							18.2	12.6									5.3							245		
250							18.2	12.6									5.3							250		
255							18.1	12.6									5.3							255		
260							17.5	12.6									5.3							260		
265								12.6									5.3							265		
270								12.6																270		
275								12.6																275		
280								12.6																280		

\* adapter / pièce d'adaptateur

TAB 146494

# Lifting heights Hauteurs de levage



## Lifting capacities on the luffing lattice jib Forces de levage à la fléchette treillis relevable



ft	51 ft + 13 ft*											84 ft + 13 ft*											ft		
	ft											ft													
	46	69	92	115	138	161	184	207	230	253	276	46	69	92	115	138	161	184	207	230	253	276			
38	217																						38		
40	217																						40		
45	213	185																					45		
50	197	184										174											50		
55		176	151									166	149										55		
60		160	150									151	147										60		
65		146	144	121								138	135										65		
70		135	134	119									125	116									70		
75		125	124	117	96								117	112	96								75		
80			115	114	95.5								109	105	95.5								80		
85			108	106	94	78.5							101	98	94								85		
90			101	99.5	93	78								92.5	89	77							90		
95			94.5	93.5	90.5	77	63							87.5	84	76.5	63						95		
100				87.5	86.5	76	63							82.5	79.5	75.5	63						100		
105				82.5	81.5	75.5	62							78	75	72.5	63						105		
110				78	77	74.5	61.5	52						73.5	71.5	69	62.5	51.2					110		
115				74	73	72	61	51.6	42.1					68	65.5	62	51	42.3					115		
120				70.5	69.5	68.5	60.5	51.2	41.9					65	62.5	60	50.8	42.2					120		
125					66	65	59.8	50.7	41.5					62	59.8	57.5	50.6	42					125		
130					62.5	62	59.6	50.3	41.2	34.1				58.9	57.3	55	50.4	41.8	34				130		
135					59.8	59.1	57.6	49.9	40.8	33.6	27.6				54.9	52.7	49.9	41.7	33.9	28.1			135		
140					57.1	56.4	55	49.5	40.5	33	27.5				52.5	50.5	48.7	41.6	33.8	28			140		
145						53.8	52.5	49.3	40.2	32.4	27.3				50.2	48.5	46.7	41.4	33.7	28			145		
150						51.5	50.2	49.1	39.9	31.8	27.1				48	46.6	44.8	41.3	33.5	27.9	22.1		150		
155						49.4	48	47.4	39.6	31.3	26.8				45.9	44.8	43.1	40.7	33.4	27.9	22.1		155		
160						47.3	46	45.3	39.5	30.7	26.5					43	41.4	39.6	33.3	27.9	22		160		
165						45.4	44.1	43.4	39.4	30.2	26.1					41.2	39.9	38	33.2	27.8	22		165		
170						43.6	42.3	41.6	39.4	29.7	25.8					39.6	38.5	36.6	33.1	27.7	22		170		
175							40.7	40	38.4	29.2	25.4					38	37	35.3	32.8	27.4	22		175		
180							39.1	38.4	37	28.8	25.1						35.5	34	31.9	27.1	22		180		
185							37.6	36.9	35.5	28.5	24.8							34.1	32.8	30.8	26.9	22	185		
190							36.2	35.5	34.1	28.1	24.5							32.8	31.7	29.6	26.6	22	190		
195								34.1	32.8	27.7	24.2							31.5	30.5	28.6	26.3	21.9	195		
200								32.9	31.5	27.4	24							30.4	29.3	27.6	25.8	21.9	200		
205								31.7	30.3	27	23.7								28.2	26.6	25.1	21.9	205		
210								30.5	29.2	26.7	23.5									27.1	25.7	24.2	21.9	210	
215								29.4	28.1	26.3	23.3									26.1	24.7	23.3	21.9	215	
220									27.1	25.8	23.1									25.1	23.7	22.5	21.3	220	
225									26.1	25.1	22.8										22.8	21.7	20.5	225	
230									25.1	24.2	22.6										21.9	20.9	19.8	230	
235										24.2	23.3	21.9										21.1	20.1	19	235
240											22.4	21.1										20.3	19.3	18.3	240
245											21.6	20.3											18.5	17.6	245
250											20.8	19.5											17.8	16.9	250
255											20	18.7											17.1	16.2	255
260											18.7	18											16.5	15.5	260
265												17.3											15.8	14.9	265
270												16.6												14.2	270
275												16												13.6	275
280												15.4												13.1	280
285																								12.5	285

\* adapter / pièce d'adaptateur

TAB 146497



## Lifting capacities on the luffing lattice jib Forces de levage à la flèche treillis relevable

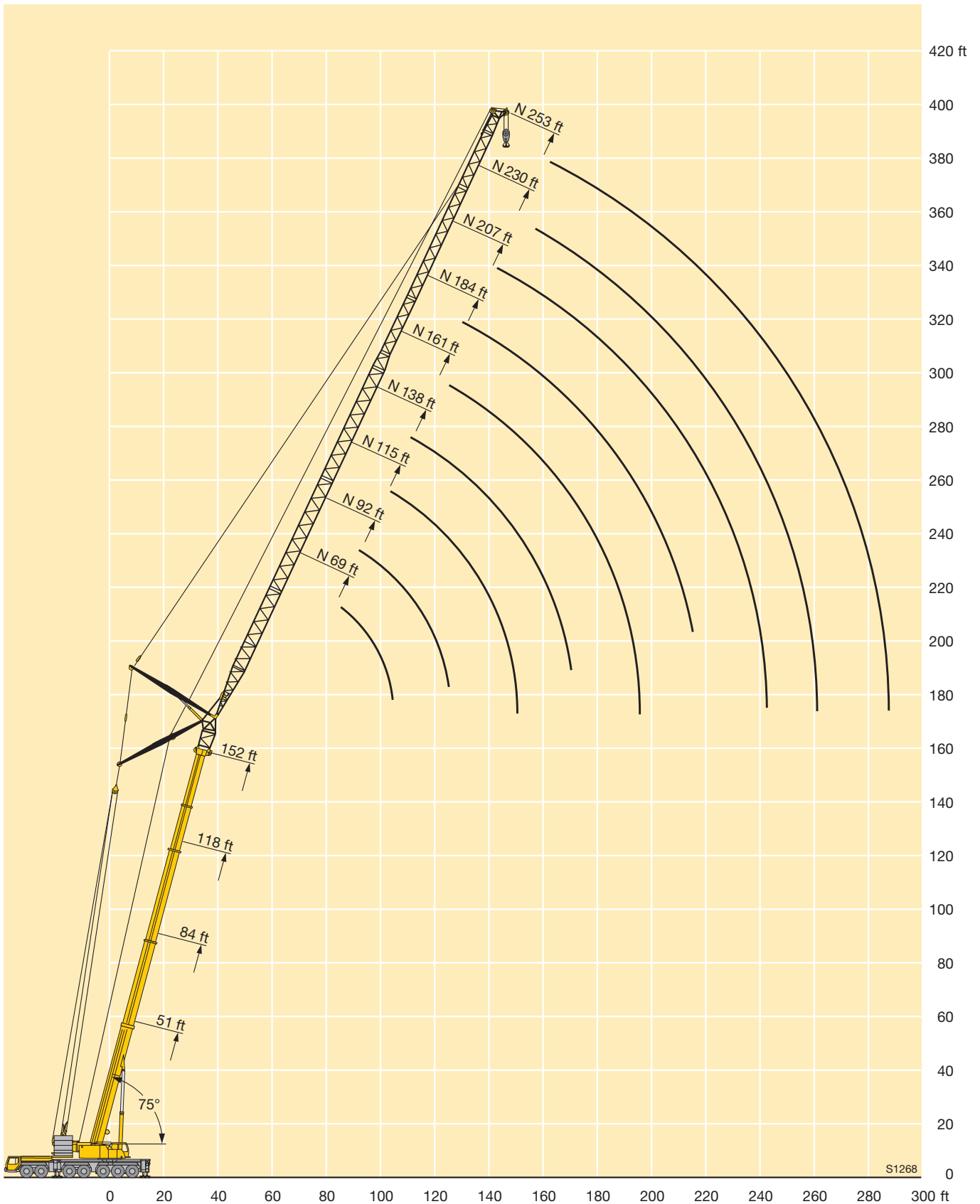


ft	118 ft + 13 ft*											152 ft + 13 ft*								186 ft + 13 ft*						ft
	ft											ft								ft						
	69	92	115	138	161	184	207	230	253	276	69	92	115	138	161	184	207	230	253	69	92	115	138	161	184	
70	91																									70
75	88.5	78																								75
80	84.5	77																								80
85	81	74.5								55.9																85
90	78	72	63							54.1	47															90
95	75	69.5	62	53.1						52.3	46.3										33					95
100		67	60.5	52.9						50.6	45.1	37.8									32.7	26.5				100
105		65	58.9	52							43.9	37.8									31.5	26.5				105
110		63	57.4	51	43.6						42.7	36.9	31.1								30.4	25.8				110
115		61	55.8	50	43.4	35.1					41.5	36.1	30.7								25.1	20.4				115
120			54.3	48.9	42.9	35					40.3	35.3	30.1	25							24.4	20.2				120
125			52.8	47.9	42.3	35						34.5	29.5	25							23.7	19.8				125
130			51.4	46.7	41.6	34.9	28.6					33.6	28.8	24.6	19.8						22.9	19.3	15.3			130
135			49.9	45.5	40.9	34.7	28.6					32.8	28.3	24.2	19.7						22.2	18.7	15	10.9		135
140				44.4	40.1	34.4	28.5	22.6				32.1	27.7	23.7	19.4	14.3						18.2	14.6	10.9		140
145				43.3	39.2	33.9	28.4	22.6				31.3	27	23.3	19.2	14.3						17.6	14.3	10.9		145
150				42.3	38.4	33.4	28.3	22.6	18			30.8	26.4	22.9	18.8	14.3						17.1	13.9	10.9	6.1	150
155				40.9	37.6	32.9	28.2	22.6	18				25.9	22.5	18.5	14.3	9					16.6	13.5	10.9	6.1	155
160				39.4	36.8	32.3	28	22.6	18	12.1			25.3	22.1	18.2	14.3	9	4.9					13.1	10.8	6.1	160
165					35.9	31.7	27.6	22.6	18	12.1			24.8	21.6	17.8	14.3	9	4.9					12.7	10.5	6.1	165
170					34.8	31.1	27.3	22.6	18	12.1			24.4	21.2	17.5	14.3	9	4.9					12.4	10.3	6.1	170
175					33.6	30.5	26.9	22.5	18	12.1				20.8	17.2	14	9	4.9					12	10	6.1	175
180					32.4	29.9	26.5	22.4	18	12.1				20.5	16.9	13.8	9	4.9					11.7	9.8	6.1	180
185						29.2	26.1	22.1	18	12.1				20.2	16.6	13.5	9	4.9						9.6	6.1	185
190						28.2	25.7	21.8	18	12.1				19.9	16.3	13.3	9	4.9						9.3	6.1	190
195						27.2	25.3	21.5	18	12.1				19.8	16	13.1	9	4.9						9.1	6.1	195
200						26.3	24.9	21.2	18	12.1					15.7	12.9	9	4.9						8.9	6.1	200
205						25.5	24.3	20.8	17.9	12.1					15.5	12.6	9	4.9							6.1	205
210							23.5	20.5	17.6	12.1					15.3	12.4	9	4.9							6.1	210
215							22.7	20.2	17.3	12.1					15.2	12.2	9	4.9							6.1	215
220							21.9	19.8	17	12.1						12	9	4.9							6	220
225							21.2	19.3	16.8	12.1						11.8	9	4.9							5.8	225
230								18.6	16.5	12.1						11.7	9	4.9								230
235								18	16.2	12.1						11.7	9	4.9								235
240								17.3	15.9	12.1						11.6	8.9	4.9								240
245								16.7	15.4	12.1							8.8	4.9								245
250								16.2	14.8	12.1							8.7	4.9								250
255								15.6	14.2	12.1							8.7	4.9								255
260									13.7	11.9							8.6	4.9								260
265									13.2	11.5								4.9								265
270									12.7	11								4.9								270
275									12.2	10.5								4.9								275
280									10.1									4.9								280
285									9.6									4.9								285
290									9.2																	290
295									8.8																	295
300									8.5																	300

\* adapter / pièce d'adaptateur

TAB 146497

# Lifting heights Hauteurs de levage



## Lifting capacities on the luffing lattice jib Forces de levage à la flèche treillis relevable



ft	51 ft + 13 ft*											84 ft + 13 ft*											ft							
	46	69	92	115	138	161	184	207	230	253	276	46	69	92	115	138	161	184	207	230	253	276								
50	179																						50							
55	171																						55							
60	156																						60							
65	143	140									129												65							
70		131									120												70							
75		121	120								111	103											75							
80		112	111									101											80							
85		105	104	102								94.5											85							
90			97	95.5								89	83.5										90							
95			91	89.5	84.5							83.5	80.5										95							
100			85.5	84.5	83								76.5	69.5									100							
105				79.5	78								72.5	69.5									105							
110				75	74	71							68.5	66									110							
115				71	70	68.5							65	62.5	58.4								115							
120				67.5	66.5	65.5	57.2							59.8	57.4								120							
125				64	63	62	57.1							57.1	54.7								125							
130				61	60	59.2	56.6							54.5	52.4	49.5							130							
135					57.2	56.4	54.8	47.2						52	50.1	47.9	44.9						135							
140					54.6	53.8	52.4	47.1						49.6	48.1	45.9	44.1						140							
145					52.2	51.4	50	46.8							46.1	44	42.2						145							
150					49.9	49.2	47.8	46.4	38						44.1	42.3	40.5	38.2					150							
155						47.1	45.7	44.9	37.9						42.2	40.6	38.9	37					155							
160						45.1	43.8	43	37.7	30.6					40.5	39.1	37.4	35.5	31.1				160							
165						43.3	41.9	41.2	37.6	30.5						37.6	35.9	34.1	31				165							
170						41.5	40.2	39.5	37.5	30.1						36.1	34.6	32.7	30.5				170							
175						39.9	38.6	37.8	36.3	29.6	24.8					34.6	33.3	31.5	29.4	25.9			175							
180							37.1	36.3	34.9	29.2	24.8					33.2	32.1	30.3	28.2	25.9			180							
185							35.6	34.9	33.5	28.8	24.8					31.9	30.9	29.2	27.1	25.6			185							
190							34.3	33.5	32.1	28.4	24.7					30.7	29.6	28.1	26.1	24.5			190							
195							33	32.2	30.8	28.1	24.4						28.5	27.1	25.1	23.6	20.4		195							
200								31	29.6	27.7	24.1						27.4	26.2	24.2	22.6	20.4		200							
205									29.8	28.5	27.2	23.9					26.3	25.2	23.3	21.8	20.2		205							
210									28.7	27.4	26.4	23.7							24.2	22.4	20.9	19.7	210							
215									27.7	26.3	25.3	23.4							23.2	21.6	20.1	18.9	215							
220									26.7	25.3	24.3	22.8							22.3	20.8	19.4	18.2	220							
225										24.4	23.4	22							21.5	20	18.6	17.4	225							
230										23.5	22.5	21.1							20.7	19.2	17.9	16.7	230							
235										22.6	21.6	20.3							19.9	18.4	17.3	16.1	235							
240										21.8	20.8	19.4								17.7	16.6	15.4	240							
245											20	18.6								17	15.9	14.8	245							
250											19.2	17.9									16.3	15.2	14.2	250						
255											18.5	17.2									15.7	14.6	13.6	255						
260											17.8	16.5										14	13	260						
265											17.2	15.8											13.4	12.4	265					
270												15.2												12.8	11.8	270				
275												14.6													12.3	11.4	275			
280												14														11.9	10.9	280		
285												13.4																10.4	285	
290																												10	290	
295																													9.6	295
300																													9.2	300

\* adapter / pièce d'adaptateur

TAB 146500

## Lifting capacities on the luffing lattice jib Forces de levage à la fléchette treillis relevable

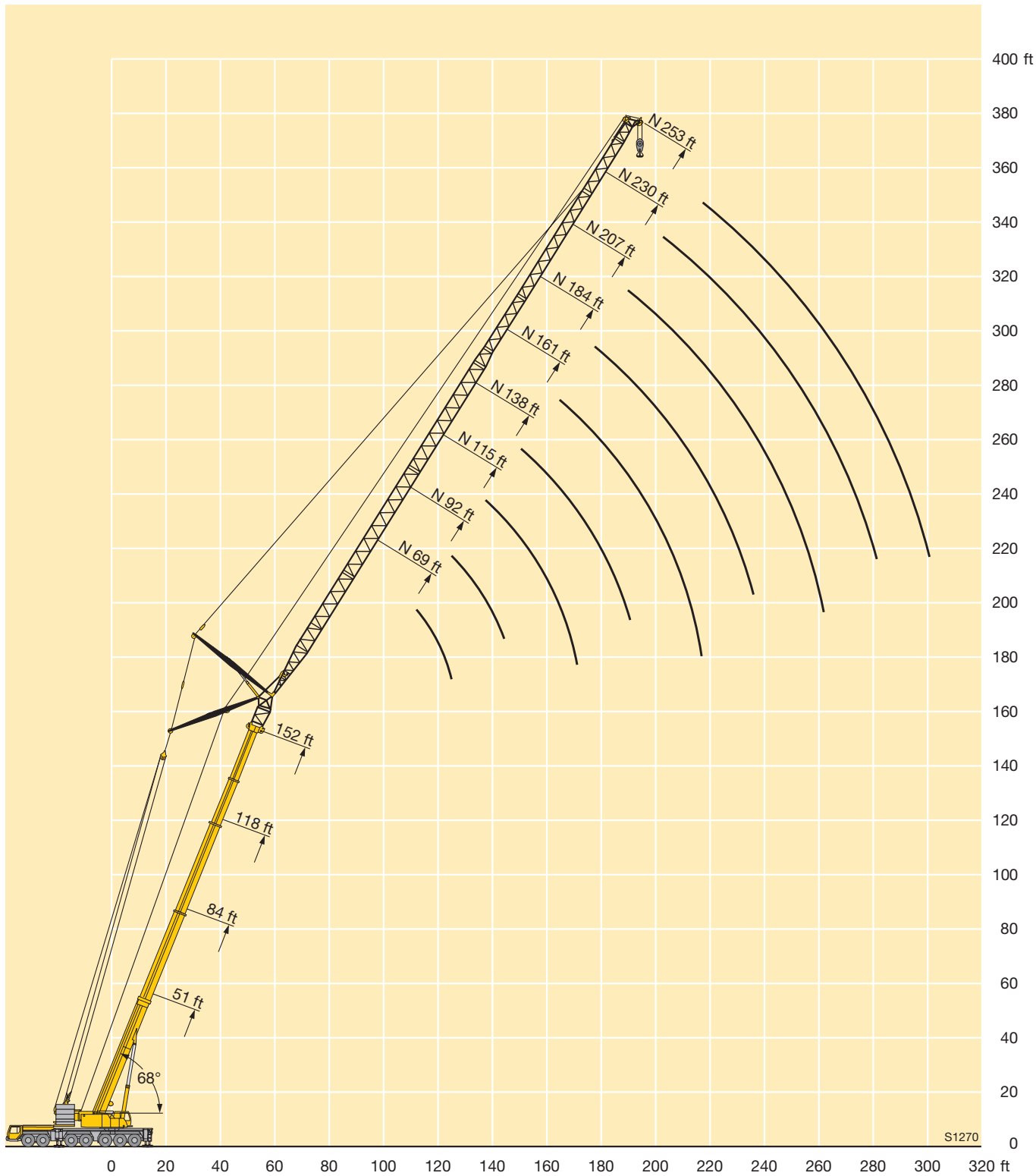


ft	118 ft + 13 ft*										152 ft + 13 ft*							186 ft + 13 ft*						ft		
	ft										ft							ft								
	69	92	115	138	161	184	207	230	253	276	69	92	115	138	161	184	207	230	253	69	92	115	138		161	184
95	68																								95	
100	64.5	56																							100	
105	61.5	56																							105	
110	59	56								41.3															110	
115		54.4	49.6							40.1															115	
120		52.3	48.9							38.5	34.4														120	
125		50.4	47.1								34.3														125	
130		48.4	45.4	42.1							33									22.5					130	
135			43.6	41							31.9	28								21.8					135	
140			41.9	39.6	35.8						30.8	27.6									17.6				140	
145			40.2	38.2	35.6							26.6										17.5			145	
150			38.6	36.6	34.5							25.7	22.6									16.8			150	
155			37.2	35.2	33.3	29.6						24.9	22								16.2	13.1			155	
160				33.9	32	29.2						24.2	21.2	18.5								12.8			160	
165				32.6	30.7	28.3						23.5	20.5	18.4								12.3			165	
170				31.4	29.5	27.4	24.7					22.8	19.8	17.8								11.9	9.7		170	
175				30.3	28.4	26.3	24.2					19.3	17.2	14.1								11.5	9.5		175	
180					27.4	25.3	23.6	20				18.7	16.7	13.9								11.2	9.1	7.3	180	
185					26.4	24.3	23	19.9				18.2	16.2	13.5									8.8	7.3	185	
190					25.5	23.4	22.3	19.4				17.7	15.7	13	11								8.6	7	190	
195					24.6	22.5	21.4	18.9	16.3				15.3	12.6	10.7								8.3	6.8	4.8	195
200					23.8	21.7	20.6	18.4	16				14.8	12.2	10.4	8.1							8	6.5	4.6	200
205						20.9	19.8	17.9	15.6	12.1			14.4	11.9	10.1	8								6.3	4.4	205
210						20.2	19.1	17.1	15.2	12.1			14	11.6	9.8	7.8								6.1	4.2	210
215						19.5	18.4	16.4	14.8	11.9			13.8	11.3	9.6	7.5	4.9							5.9	4	215
220						18.8	17.7	15.8	14.3	11.7				11	9.3	7.3	4.9							5.6	3.8	220
225						17	15.1	13.8	11.4					10.7	9	7	4.9							5.4	3.6	225
230						16.4	14.5	13.1	11.2					10.5	8.8	6.8	4.9								3.4	230
235						15.8	13.9	12.6	10.7					10.3	8.5	6.6	4.9								3.2	235
240						15.3	13.4	12	10.2						8.3	6.4	4.8								3	240
245						14.7	12.8	11.5	9.7						8.1	6.2	4.7								2.8	245
250							12.3	11	9.2						7.9	6	4.5									250
255							11.8	10.5	8.7						7.7	5.8	4.4									255
260							11.4	10	8.3						7.6	5.6	4.2									260
265							10.9	9.6	7.8						5.4	4										265
270								9.1	7.4							5.2	3.8									270
275								8.7	7							5	3.6									275
280								8.3	6.6							4.9	3.5									280
285								7.9	6.2								3.3									285
290								7.6	5.8								3.1									290
295								7.2	5.4								3									295
300									5.1								2.9									300
305									4.8																	305
310									4.5																	310

\* adapter / pièce d'adaptateur

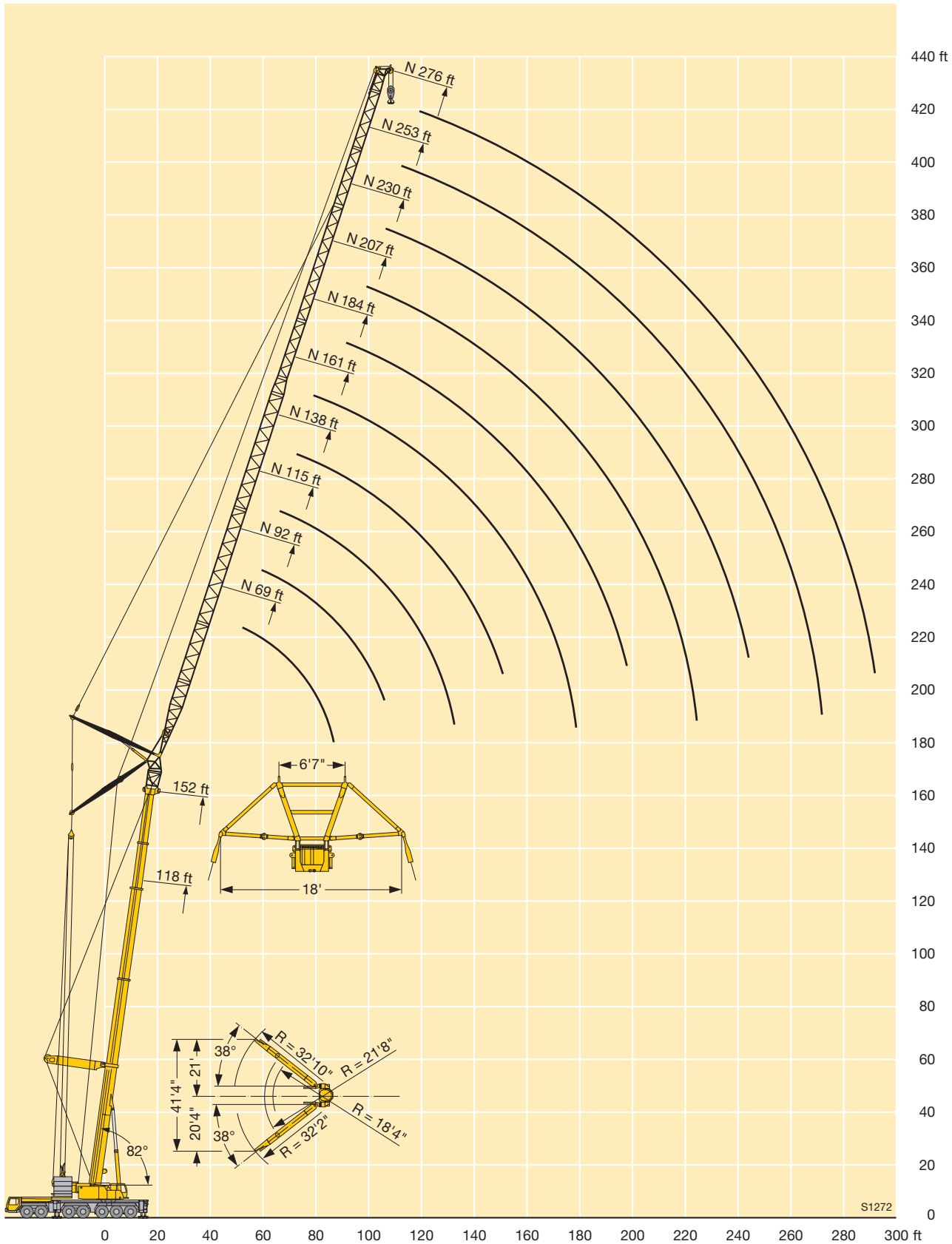
TAB 146500

# Lifting heights Hauteurs de levage



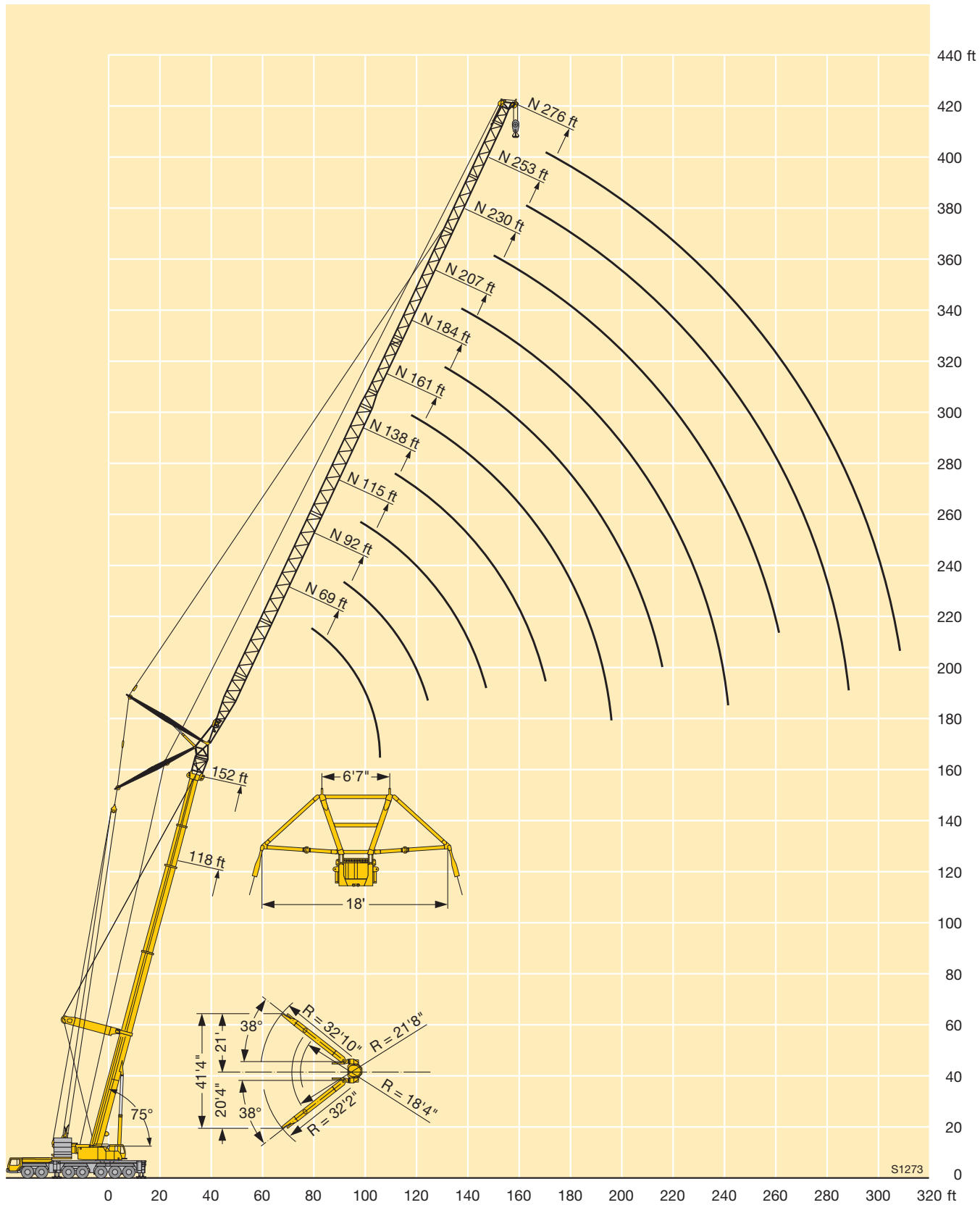


# Lifting heights Hauteurs de levage



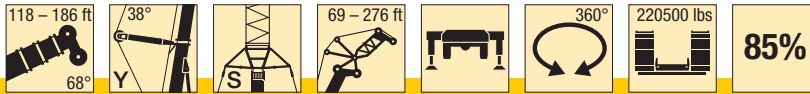


# Lifting heights Hauteurs de levage



## Lifting capacities on the luffing lattice jib with guyed telescopic boom

## Forces de levage à la fléchette treillis relevable avec flèche télescopique haubanée



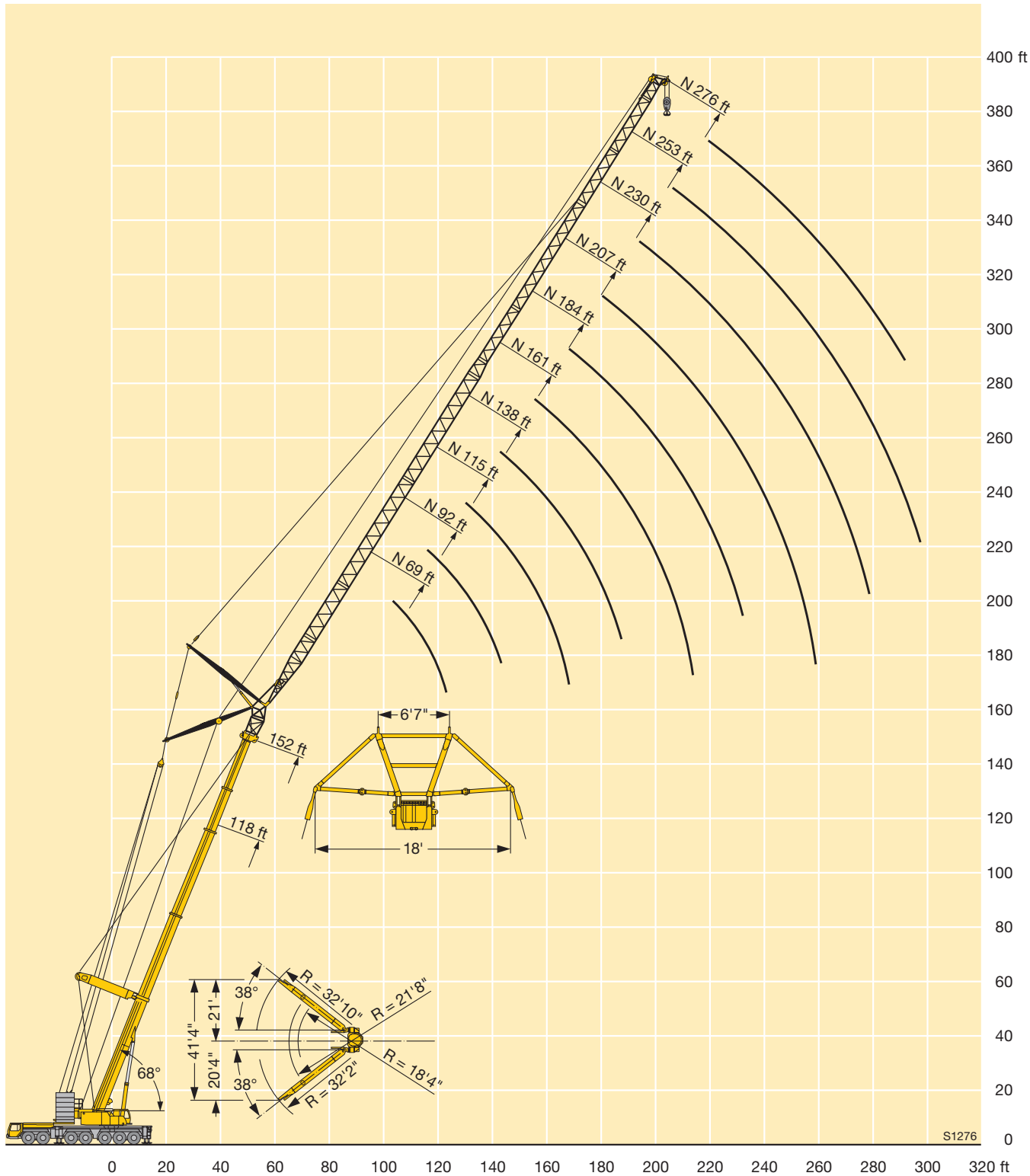
ft	118 + 13 ft*									152 ft + 13 ft*									186 ft + 13 ft*							ft		
	69	92	115	138	161	184	207	230	253	276	69	92	115	138	161	184	207	230	253	276	69	92	115	138	161		184	207
90	75.5																										90	
95	73																											95
100	69	62.5																										100
105	65.5	62.5								55.6																		105
110	62.5	59.4								53.1																		110
115		56.6	52.3							50.9	46.6																	115
120		54	51.4							49	45.9																	120
125		51.6	49								43.9																	125
130		49.5	46.9	44.2							42.2	39																130
135			44.9	42.8							40.6	37.8																135
140			43.1	41	37.4						39.1	36.4	32.5															140
145			41.4	39.3	37.2							35.1	32.3															145
150			39.8	37.7	35.7							33.9	31															150
155			38.2	36.2	34.2	31.9						32.6	29.9	27.6														155
160				34.9	32.9	31.2						31.4	28.8	27.2														160
165				33.5	31.6	30						30.2	27.8	26.2														165
170				32.3	30.4	28.8	26.8					29.1	26.7	25.3	22.5													170
175				31	29.3	27.7	25.8					25.7	24.4	21.9														175
180					28.2	26.6	24.8	22				24.8	23.5	21.2	18.4													180
185					27.2	25.6	23.8	21.8				23.9	22.6	20.4	18.3													185
190					26.2	24.7	22.9	20.8				23	21.8	19.7	17.7													190
195					25.2	23.8	22	20	18.9				21	18.9	17	14.8												195
200					24.2	22.9	21.2	19.2	18.4	15.9			20.2	18.2	16.4	14.4												200
205						22.1	20.4	18.4	17.6	15.7			19.5	17.5	15.7	13.9	11.7											205
210						21.3	19.6	17.6	16.8	15			18.8	16.8	15.1	13.4	11.7											210
215						20.4	18.9	16.9	16.1	14.3			18.2	16.1	14.4	12.9	11.3											215
220						19.6	18.2	16.2	15.5	13.6				15.5	13.8	12.4	11	8.8										220
225							17.5	15.6	14.8	13				15	13.3	11.9	10.5	8.6										225
230							16.8	15	14.2	12.4				14.4	12.7	11.4	10	8.2										230
235							16.2	14.4	13.6	11.8				13.9	12.2	10.9	9.5	7.7										235
240							15.5	13.8	13	11.2					11.7	10.4	9	7.2										240
245							14.8	13.3	12.5	10.7					11.2	9.9	8.5	6.7										245
250								12.7	11.9	10.2					10.8	9.4	8.1	6.3										250
255								12.2	11.4	9.7					10.4	9	7.6	5.8										255
260								11.7	11	9.2					10	8.6	7.2	5.4										260
265								11.3	10.5	8.7						8.2	6.8	5										265
270									10	8.3						7.8	6.4	4.7										270
275									9.6	7.9						7.4	6	4.3										275
280									9.2	7.5						7	5.7	3.9										280
285									8.8	7.1							5.3	3.6										285
290									8.4	6.7							5	3.3										290
295									8.1	6.3							4.7	2.9										295
300									6	6.3							4.4	2.6										300
305										5.6								2.3										305
310										5.3																		310

\* adapter / pièce d'adaptateur

TAB 146509

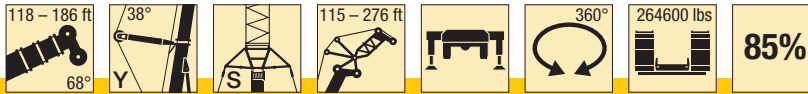


# Lifting heights Hauteurs de levage



# Lifting capacities on the luffing lattice jib with guyed telescopic boom

## Forces de levage à la flèche treillis relevable avec flèche télescopique haubanée

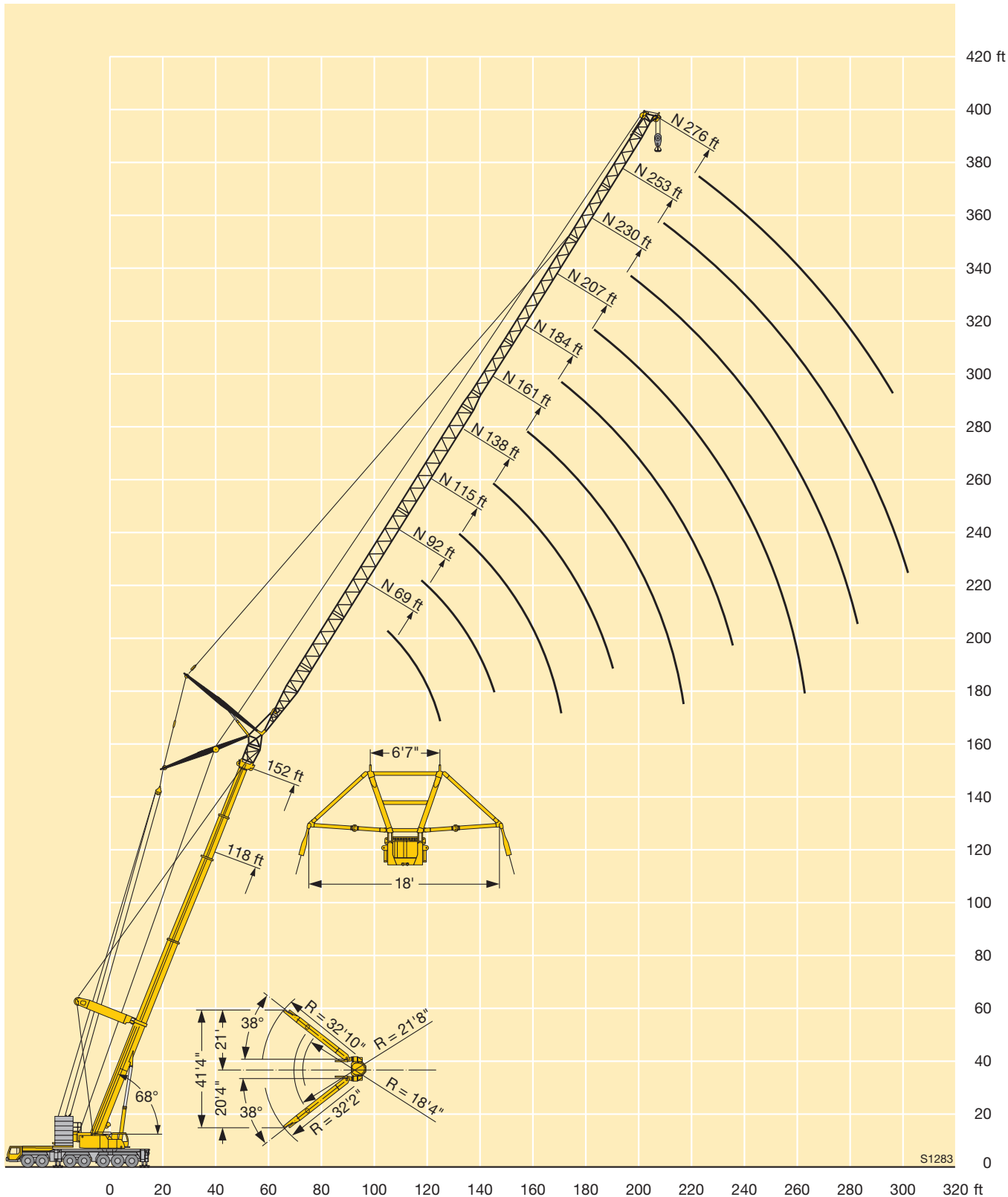


ft	118 ft + 13 ft*								152 ft + 13 ft*								186 ft + 13 ft*					ft
	115	138	161	184	207	230	253	276	115	138	161	184	207	230	253	276	115	138	161	184	207	
115	61																					115
120	59.9																					120
125	57.5																					125
130	54.8	51.7						39														130
135	52.3	50.4						37.8														135
140	49.9	48.5	44.1					36.4	32.5								25.2					140
145	47.7	46.4	43.9					35.1	32.3								25.1					145
150	45.7	44.4	42.5					34.1	31								24					150
155	43.8	42.5	41	37.3				33.1	29.9	27.6							23	20.6				155
160		40.7	39.5	36.8				32.3	28.9	27.2							22.1	20.2				160
165		39.1	37.8	35.8				31.6	28.1	26.2							21.4	19.3				165
170		37.5	36.2	34.9	31.6			31.5	27.4	25.3	22.5						20.7	18.5	16.5			170
175		36	34.8	33.6	31				26.7	24.6	21.9						20.1	17.8	15.9			175
180			33.4	32.3	30.3	26.2			26	23.9	21.2	18.4					19.7	17.2	15.3	12.4		180
185			32.1	31	29.6	26			25.5	23.3	20.5	18.3						16.7	14.7	12.3		185
190			30.8	29.7	28.4	25.4			25.3	22.7	19.8	17.7						16.1	14.1	11.8		190
195			29.7	28.6	27.3	24.9	21.9			22.1	19.3	17	14.8					15.6	13.6	11.3	9.6	195
200			28.6	27.4	26.2	24.3	21.6	18.4		21.5	18.8	16.4	14.4					15.3	13.2	10.9	9.3	200
205				26.4	25.1	23.6	21.1	18.3		21.1	18.2	15.9	13.9	11.7					12.8	10.5	8.9	205
210				25.4	24.1	22.6	20.7	17.9		20.8	17.6	15.3	13.4	11.7					12.4	10.2	8.6	210
215				24.4	23.2	21.6	20.2	17.5		20.8	17	14.8	12.9	11.3					12	9.8	8.2	215
220				23.5	22.3	20.7	19.8	17.1			16.5	14.3	12.4	11	8.8				11.7	9.5	7.8	220
225					21.4	19.9	19.3	16.8			16.1	13.9	11.9	10.6	8.7				11.6	9.2	7.5	225
230					20.6	19.1	18.6	16.4			15.9	13.4	11.6	10.1	8.3					8.9	7.2	230
235					19.8	18.3	17.7	16.1			15.8	12.9	11.2	9.7	7.9					8.5	6.9	235
240					19.1	17.6	17	15.5				12.5	10.8	9.4	7.5					8.3	6.6	240
245					18.4	16.8	16.3	14.9				12.2	10.5	9	7.2					8.1	6.3	245
250						16.1	15.6	14.2				12	10.2	8.7	6.8						6.1	250
255						15.5	14.9	13.5				12	9.8	8.4	6.4						5.8	255
260						14.9	14.3	12.8				12	9.5	8.1	6.2						5.6	260
265						14.3	13.7	12.3					9.3	7.8	5.9						5.5	265
270							13.1	11.8					9.1	7.5	5.6							270
275							12.5	11.4					9.1	7.3	5.4							275
280							12.1	11					9.1	7	5.1							280
285							11.7	10.6						6.7	4.9							285
290							11.3	10.2						6.6	4.6							290
295							10.9	9.8						6.6	4.4							295
300								9.4						6.6	4.1							300
305								9							3.9							305
310								8.7							3.8							310
315															3.8							315
320															3.8							320
325															3.8							325

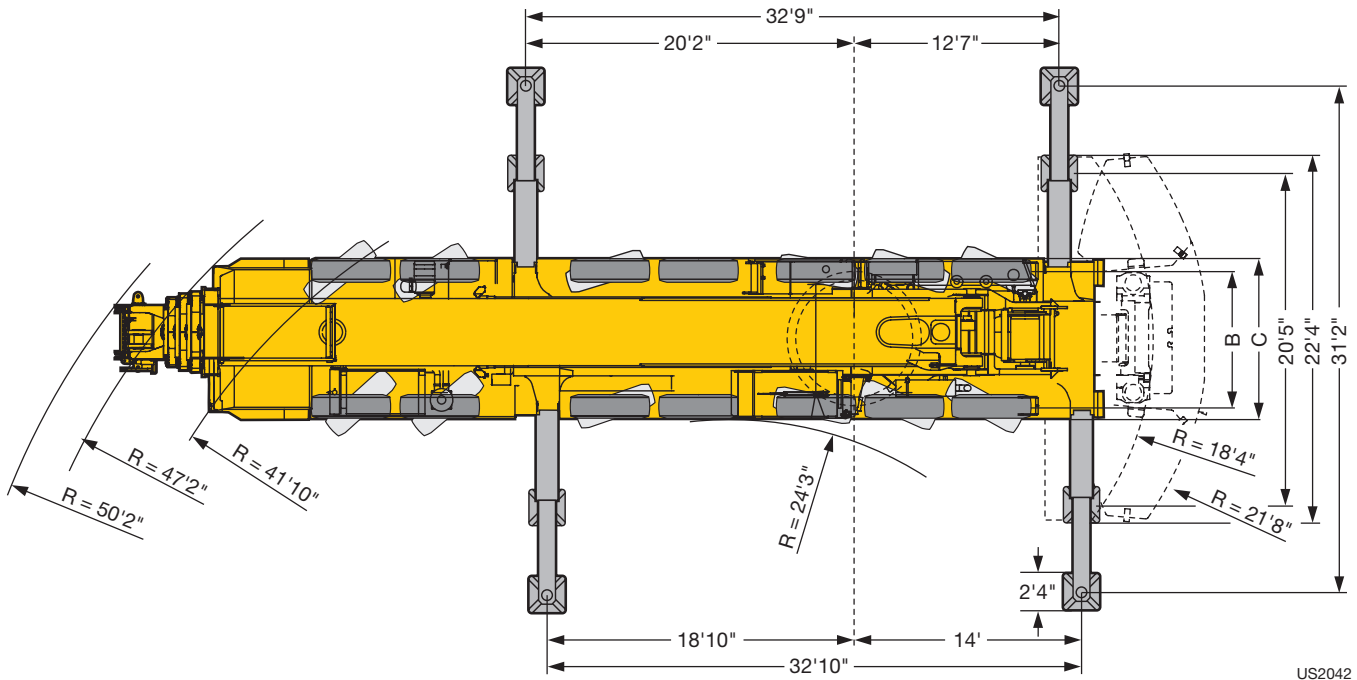
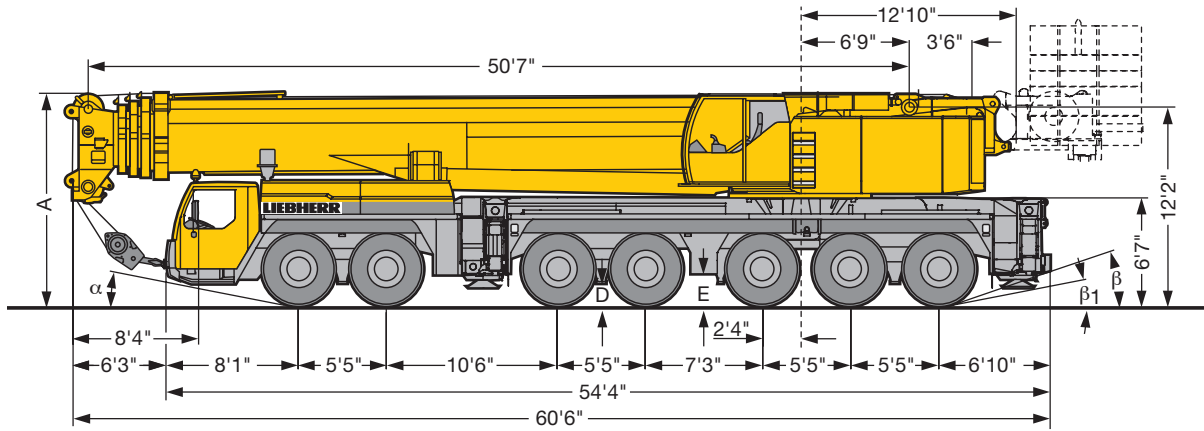
\* adapter / pièce d'adaptateur

TAB 146507


# Lifting heights Hauteurs de levage



## Dimensions Encombremet



US2042

Dimensions / Encombremet									
	A	A 6"/4"*	B	C	D	E	$\alpha$	$\beta$	$\beta_1$
16.00 R 25	13'1"	12'10"	8'4"	9'10"	1'3"	1'6"	11°	19°	11°
20.5 R 25	13'1"	12'10"	8'10"	10'7"	1'3"	1'6"	11°	19°	11°

\* lowered / abaissé



## Weights Poids



Axle Essieu lbs	1	2	3	4	5	6	7	Total weight (lbs) Poids total lbs
	26400	26400	26400	26400	26400	26400	26400	185000 lbs



Load (kips) Forces de levage kips	No. of sheaves Poules	No. of lines Brins	Weight lbs Poids lbs
525.5	11	22	8149
443	9	18	7268
376	7	14	5947
285	5	10	5066
187	3	6	3964
82	1	3	3083
28	-	1	1321

## Working speeds Vitesses



		1	2	3	4	5	6	7	8	9	10	11	12	R 1	R 2	
16.00 R 25	(mph)	3.5	4.5	5.8	7.5	9.5	12.2	16.1	20.6	26.7	34.2	43.4	50	3.8	4.9	39.7 %



Drive Mécanismes	infinitely variable en continu	Rope diameter / Rope length Diamètre du câble / Longueur du câble	Max. single line pull Effort au brin maxi.
	0 – 426 ft/min single line ft/min au brin simple	1" / 1542 ft	28415 lbs
	0 – 426 ft/min single line ft/min au brin simple	1" / 1542 ft	28415 lbs
	0 – 492 ft/min single line ft/min au brin simple	1" / 2542 ft	28415 lbs
	0 – 1.5 min <sup>-1</sup>		
	approx. 70 seconds to reach 82° boom angle env. 70 s jusqu'à 82°		
	approx. 380 seconds for boom extension from 51 ft – 197 ft env. 380 s pour passer de 51 ft – 197 ft		

## Equipment Équipement

### Crane carrier

<b>Frame</b>	Self-manufactured, torsion-resistant box-type design of high-tensile fine grained structural steel.
<b>Outriggers</b>	Four hydraulically extendable sliding beams with hydraulic supporting rams and supporting pads fixed for the transport. The front outrigger casing is located between axles 2 and 3, the rear outrigger casing at the rear of the carrier. Supporting basis: 32,8 ft longitudinally x 31,2 ft transversally.
<b>Engine</b>	8-cylinder Diesel, make Liebherr, type D9508 A7, watercooled, output 450 kW (612 h.p.) at 1900 min <sup>-1</sup> . Exhaust emissions acc. to 97/68/EG stage 3 and EPA/CARB Tier 3. Max. torque 2095 lbs-ft at 1100 – 1500 min <sup>-1</sup> . Fuel reservoir: 153 gallons.
<b>Transmission</b>	Automatic transmission system with converter control clutch, make ZF, type TC-TRONIC with 12 forward speeds and 2 reverse speeds, transfer case with transfer differential.
<b>Axles</b>	Robust crane carrier axles. All axles steered, axles 1, 3 and 5 are driven planetary axles, axle 3 with longitudinal differential, all driven axles with transverse differential.
<b>Cardan shafts</b>	All cardan shafts with 70° diagonal toothing.
<b>Suspension</b>	All axles on hydropneumatic suspension with automatic levelling control. Automatic axle pressure equalization between the axle pairs 1 + 2, 3, 4 + 5 and 6 + 7. The suspension can be blocked hydraulically.
<b>Tyres</b>	14-fold, all axles equipped with single tyres. Tyre size: 16.00 R 25.
<b>Steering</b>	ZF semi-integral power steering, dual circuit system with hydraulic servo mechanism and additional emergency pump driven by the axle, acting on the mechanically interlinked axles 1 – 3. Axles 4 – 7 are steered electrohydraulically during road displacement and fixed to straight displacement from 18 mph. Steering in accordance with EC recommendation 70/311/EEC.
<b>Brakes</b>	Service brake: All-wheel servo-air brake, dual circuit system. Additional brakes: Exhaust pipe flap retarder, retarder mounted to shift gear, TELMA-type eddy current brake (optional). Hand brake: Spring-loaded brake, acting on all wheels of the 2nd to the 7th axle. Brakes acc. to EG directives 71/320 EWG.
<b>Driver's cab</b>	Spacious cab of sheet steel, on rubber shock absorbers. Safety glass windows.
<b>Electrical system</b>	Modern data bus technology, 24 Volt DC, 2 batteries of 170 Ah each, lighting acc. to German regulations StVZO.

### Crane superstructure

<b>Frame</b>	Self-manufactured, torsion-resistant welded construction of high-tensile fine grained steel, linked to the carrier by a three-row roller slewing rim for continuous rotation.
<b>Crane engine</b>	6-cylinder Diesel engine, make Liebherr, type D936L A6, watercooled, 240 kW (326 HP) at 1800 min <sup>-1</sup> , max. torque 1125 lbs-ft at 1500 min <sup>-1</sup> . Exhaust emissions acc. to 97/68/EG and EPA/CARB. Fuel tank: 66 gallons.
<b>Crane drive</b>	Diesel-hydraulic with 4 axial piston variable displacement pumps with servo-control and capacity regulation.
<b>Control</b>	Two self-centering control levers (joy-stick type). Stepless control of all crane motions by variation of the hydraulic pumps, additional speed regulation by variation of the Diesel engine speed.
<b>Hoist gear</b>	Axial piston variable displacement motor, Liebherr rope winch with integrated planetary gear and spring-loaded static brake.
<b>Luffing gear</b>	2 differential rams with safety check valve.
<b>Slewing gear</b>	Hydraulic motor, planetary gear, slewing pinion and spring-loaded static brake.
<b>Crane cab</b>	Spacious cab in sheet steel version, with safety glazing, operating and control elements. Cab inclinable to the rear.
<b>Safety devices</b>	LICCON safe load indicator, hoist limit switches, safety valves against rupture of pipes and hoses.
<b>Counterweight</b>	220500 lbs counterweight comprising: 1 base slab 33000 lbs, 6 slabs of 22000 lbs each, 5 slabs of 11100 lbs each. Hydraulic ballasting device at the counterweight frame.
<b>Telescopic boom</b>	1 base section and 4 telescopic sections. All telescopic sections extendable individually by rapid-cycle telescoping system TELEMATIK. Boom length: 51 ft – 197 ft.
<b>Electrical system</b>	Modern data bus technology, 24 Volt DC, 2 batteries of 170 Ah each.

### Additional equipment

<b>Telescopic boom guying system</b>	Consisting of guying frames with stay ropes, tilttable hydraulically into transport position.
<b>Bracing</b>	Spacer 18' width
<b>Lattice jibs</b>	Fixed lattice jib 23 ft – 184 ft long, at 0°, 20° or 40°, lattice luffing jib 46 ft – 276 ft long.
<b>2<sup>nd</sup> hoist gear</b>	For 2-hook operation.
<b>3<sup>rd</sup> hoist gear</b>	For the variation of the lattice luffing jib.
<b>Additional ballast</b>	4 additional counterweight slabs of 22 kips each for a total counterweight of 308600 lbs.
<b>Drive 14 x 8</b>	The 6th axle is driven additionally.

Other items of equipment available on request.

## Equipment Equipment

### Châssis porteur

<b>Châssis</b>	Châssis résistant à la torsion de fabrication Liebherr, en acier à grains fins très résistant.
<b>Stabilisateurs</b>	Quatre poutres télescopiques hydrauliques avec vérins de calage hydrauliques et patins de calage fixes lors du transport. Le support avant des poutres télescopiques est fixé entre les essieux 2 et 3, le support arrière à l'arrière du châssis porteur. Base de calage: 32,8 ft long x 31,2 ft transversal.
<b>Moteur</b>	Moteur diesel, 8 cylindres, fabriqué par Liebherr, de type D9508 A7, à refroidissement par eau, de 450 kW (612 ch) à 1900 min <sup>-1</sup> . Emissions des gaz d'échappement conformes aux directives 97/68/EG partie 3 et EPA/CARB Tier 3. Couple max. 2095 lbs-ft à 1100 – 1500 min <sup>-1</sup> . Capacité du réservoir à carburant: 153 gallons.
<b>Réducteurs</b>	Système de réducteurs automatique avec convertisseur-embayage, marque ZF, type TC-TRONIC avec 12 marches AV et 2 marches AR, boîte de transfert avec différentiel répartiteur.
<b>Essieux</b>	Essieux robustes. Tous essieux directeurs, essieux 1, 3 et 5 moteurs, essieu 3 avec différentiel longitudinal, tous les essieux directeurs avec différentiel transversal.
<b>Flasque de croisillons</b>	Tous les flasques de croisillons avec denture en croix 70°.
<b>Suspension</b>	Tous les essieux sont suspendus hydro-pneumatiquement avec une régulation automatique de niveau. Compensation de charge sur les essieux 1 + 2, 3, 4 + 5 et 6 + 7. Suspension à blocage hydraulique.
<b>Pneumatiques</b>	14 fois, chaque essieu est équipé de pneus. Monte de pneumatiques: 16.00 R 25.
<b>Direction</b>	Direction hydraulique semi-bloc ZF, 2 circuits avec servocommande hydraulique et pompe de secours supplémentaire, entraînée par l'essieu, action sur les essieux 1 à 3 liés mécaniquement. En mode de translation sur route, direction électro-hydraulique des essieux 4 à 7 et conduite en ligne droite activée à partir de 18 mph. Direction conforme à la directive européenne 70/311/CEE.
<b>Freins</b>	Frein de service: servo-frein pneumatique pour toutes les roues, 2 circuits. Freins supplémentaires: frein avec clapet sur échappement, ralentisseur, monté sur boîte de vitesse, frein Telma (en option). Frein à main: accumulateur à ressort, agissant sur toutes les roues des essieux 2 à 7. Freins conformes aux directives européennes 71/320 CE.
<b>Cabine porteur</b>	Cabine spacieuse en tôle électrozinguée, suspension par silent blocs. Vitres de sécurité.
<b>Circuit électrique</b>	Technologie de bus de données moderne, courant continu 24 Volts, 2 batteries de chacune 170 Ah, éclairage conforme au code de la route allemand.

### Partie tournante

<b>Châssis</b>	Structure soudée de fabrication Liebherr, résistante à la torsion, en acier à grains fins très résistant. Une couronne d'orientation à roulements à 3 rangées, servant d'élément de liaison avec le châssis porteur, permet une rotation illimitée de la partie tournante.
<b>Moteur de la grue</b>	Diesel, 6 cylindres, marque Liebherr, type D936L A6, refroidi par eau, puissance 240 kW (326 ch) à 1800 min <sup>-1</sup> , couple max. 1125 lbs-ft à 1500 min <sup>-1</sup> . Emissions des gaz d'échappement conformes aux directives 97/68/EG et EPA/CARB. Réservoir à carburant: 66 gallons.
<b>Entraînement</b>	Diesel-hydraulique avec pompes à débit variable à 4 pistons axiaux, servocommande et régulation de la puissance.
<b>Commande</b>	Deux manipulateurs à 4 directions, à centrage automatique. Régulation progressive de tous les mouvements de la grue par réglage des pompes hydrauliques. Régulation supplémentaire de la vitesse par réglage du régime du moteur diesel.
<b>Treuil de levage</b>	Moteur à cylindrée variable à pistons axiaux, treuil Liebherr avec réducteur planétaire intégré et frein d'arrêt commandé par ressort.
<b>Mécanisme de relevage</b>	2 vérins différentiels avec clapet de sécurité anti-retour.
<b>Mécanisme d'orientation</b>	Moteur hydraulique, réducteur planétaire, pignon du mécanisme d'orientation et frein d'arrêt commandé par ressort.
<b>Cabine tourelle</b>	Cabine spacieuse en tôle électrozinguée avec vitres de sécurité, instruments de commande et de contrôle, cabine inclinable vers l'arrière.
<b>Dispositif de sécurité</b>	Contrôleur de charge LICCON, limiteur de course, clapets de sécurité contre les ruptures de conduites et de flexibles.
<b>Contrepoids</b>	Contrepoids de 220500 lbs composé de: 1 plaque de base de 33000 lbs, 6 éléments de 22000 lbs, 5 éléments de 11100 lbs. Dispositif de lestage hydraulique au support contrepoids.
<b>Flèche télescopique</b>	1 élément de base et 4 éléments télescopiques. Tous les éléments télescopiques peuvent être sortis individuellement grâce au système de télescopage rapide TELEMATIK. Longueur de la flèche: 51 ft – 197 ft.
<b>Circuit électrique</b>	Technologie de bus de données moderne, courant continu 24 Volts, 2 batteries de chacune 170 Ah.

## Equipment Équipement

### Équipement supplémentaire

<b>Haubanage de la flèche télescopique</b>	Composé du chevalet d'haubanage avec haubanage du câble, rabattable hydrauliquement en position de transport.
<b>Haubanage</b>	Pièce intermédiaire de largeur 18'
<b>Fléchette à treillis</b>	Fléchette à treillis fixe de 23 ft – 184 ft, montage possible sous 0°, 20° ou 40°, fléchette à treillis à volée variable de 46 ft – 276 ft.
<b>2ème treuil de levage</b>	Pour le mode 2 crochets.
<b>3ème treuil de levage</b>	Pour le réglage de la fléchette à treillis.
<b>Contrepoids complémentaire</b>	4 plaques complémentaires de 22 kips, pour une masse totale de 308600 lbs.
<b>Entraînement 14 x 8</b>	Le 6ème essieu est également entraîné.

Autres équipements supplémentaires sur demande.



Subject to modification / Sous réserve de modifications

**Liebherr-Werk Ehingen GmbH**

Postfach 1361, 89582 Ehingen, Germany

☎ +49 73 91 5 02-0, Fax +49 73 91 5 02-33 99

[www.liebherr.com](http://www.liebherr.com), E-mail: [info.lwe@liebherr.com](mailto:info.lwe@liebherr.com)

**Bigge Crane and Rigging Co.**

10700 Bigge Avenue

San Leandro, CA 94577

Phone: (888) 337-BIGGE or (510) 638-8100

Fax: (510) 639-4053

Email: [info@bigge.com](mailto:info@bigge.com)

Web site: [www.bigge.com](http://www.bigge.com)

TD 146.01.US06.2006