

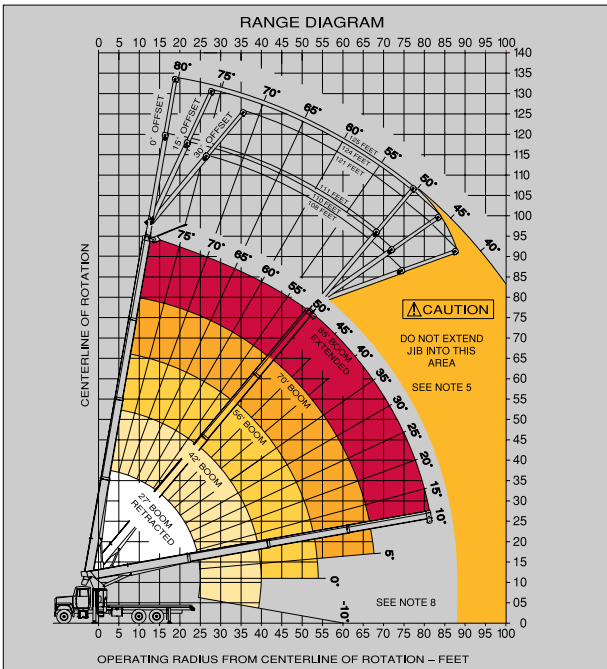
4400 Series

4485 Capacity and Range Chart:

| OPERATING HEIGHT | LOAD RATINGS IN LBS. WITH OUTRIGGERS EXTENDED | | | | | | AREA OF OPERATION | | | | |
|------------------|---|-------|-------|-------|-------|-------|-------------------------------------|----|-------|----|------|
| | 27 FT | 42 FT | 56 FT | 70 FT | 85 FT | | | | | | |
| 5 | 77 | 44000 | | | | | <p>360° FULL CAPACITY WORK AREA</p> | | | | |
| 8 | 70 | 31300 | 78 | 27000 | | | | | | | |
| 10 | 65 | 26350 | 75 | 25000 | | | | | | | |
| 12 | 60 | 22700 | 72 | 21425 | 77 | 18575 | | | | | |
| 14 | 55 | 19900 | 69 | 18675 | 75 | 16100 | | 78 | 13000 | | |
| 16 | 50 | 17600 | 66 | 16550 | 72 | 14175 | | 76 | 12100 | | |
| 20 | 37 | 13800 | 60 | 13400 | 68 | 11375 | | 73 | 9700 | 76 | 9550 |
| 25 | 10 | 8000 | 51 | 10650 | 62 | 9000 | | 69 | 8750 | 73 | 7375 |
| 30 | | | 42 | 8600 | 57 | 7325 | | 65 | 7000 | 70 | 6875 |
| 35 | | | 30 | 6700 | 50 | 6900 | | 61 | 5850 | 66 | 5650 |
| 40 | | | 8 | 3650 | 43 | 5775 | | 56 | 4900 | 62 | 4700 |
| 45 | | | | | 34 | 4550 | | 50 | 4650 | 59 | 3950 |
| 50 | | | | | 24 | 3525 | | 45 | 3675 | 55 | 3750 |
| 55 | | | | | | | | 38 | 2950 | 51 | 3025 |
| 60 | | | | | | | | 30 | 2400 | 46 | 2425 |
| 65 | | | | | | | | 18 | 1800 | 41 | 1950 |
| 70 | | | | | | | | | | 35 | 1550 |
| 75 | | | | | | | | | | 28 | 1225 |
| 80 | | | | | | | | | | 18 | 775 |
| | | | | | | | | | | | |

NOTE: RATINGS ABOVE THE HEAVY LINE ARE BASED ON STRUCTURAL COMPETENCE AND NOT ON MACHINE STABILITY.

| JIB CAPACITIES FOR ALL BOOM LENGTHS | | | | | | | | |
|--|------------|-----|------|------|------|------|------|------|
| CAPACITY ALERT SYSTEM, IF SO EQUIPPED, IS NOT FUNCTIONAL WHEN LIFTING WITH JIB | | | | | | | | |
| LOADED BOOM ANGLE | 50° | 55° | 60° | 65° | 70° | 75° | 78° | 80° |
| RETRACTED | | | | | | | | |
| 26 FT JIB | 0° OFFSET | 850 | 1025 | 1525 | 2325 | 3225 | 4325 | 5325 |
| | 15° OFFSET | 600 | 750 | 925 | 1375 | 1750 | 2000 | 2000 |
| | 30° OFFSET | 500 | 600 | 675 | 975 | 1175 | 1275 | 1275 |
| EXTENDED | | | | | | | | |
| 40 FT JIB | 0° OFFSET | 525 | 725 | 1125 | 1525 | 2025 | 2525 | 2825 |
| | 15° OFFSET | 450 | 525 | 675 | 850 | 1025 | 1100 | 1100 |
| | 30° OFFSET | 400 | 450 | 550 | 650 | 750 | 750 | 750 |



NOTE: Diagrams depict recommended mounting dimensions. The dimensions of optional mounting configurations will vary. Please consult your dealer or Terex Cranes for specifics. Dimensions do not include load deflection.

STINGER 4485

NOTE: Please consult the Terex Cranes full-line brochure for a complete listing of standard features and optional equipment.

4485 Optional Mounting Configurations:

Behind Cab (TC)
Rear Mount (RM)

(Some standard features for the optional mounting configurations will vary. Please consult your Terex Cranes dealer or factory for chassis and mounting requirements.)

TC 4485 Minimum Chassis Requirements:

Chassis specifications are minimum for truck-crane mount. Not applicable to optional mounting configurations.

- Gross Vehicle Weight Rating52,000 lbs. (23,587 kg)
- Front Axle Weight Rating18,000 lbs. (8,165 kg)
- Rear Axle Weight Rating34,000 lbs. (15,422 kg)
- Wheelbase246 in. (6,248 mm)
- Cab To Axle168 in. (4,267 mm)
- Afterframe100 in. (254 mm)
- TransmissionHeavy-Duty 6-Bolt PTO (Neutral lock-up required for automatic transmission)
- Electrical SystemHeavy-Duty
- Cooling SystemHeavy-Duty
- Frame Section Modulus26 in.³ (426 cm³)
- RBM Per Frame Rail2,860,000 in./lbs. (32,955 kg-m)

Rope and Reeving:

| 1 PART LINE | 2 PART LINE | 3 PART LINE | 4 PART LINE | 5 PART LINE | CAUTION OVERLOAD AND ANTI-TWO-BLOCK SYSTEMS MUST BE IN GOOD OPERATING CONDITION BEFORE OPERATING CRANE. REFER TO OWNER'S MANUAL. KEEP AT LEAST 3 WRAPS OF LOADLINE ON DRUM AT ALL TIMES. USE ONLY 3/16" DIAMETER CABLE WITH 33,600 LB. MIN. BREAKING STRENGTH ON THIS MACHINE. |
|--|---|---|---|---|--|
| OVERHAUL BALL LOADS UP TO 9,800 LBS. STD. CABLE | ONE SHEAVE LOAD-BLOCK LOADS UP TO 19,200 LBS. STD. CABLE | ONE SHEAVE LOAD-BLOCK LOADS UP TO 28,800 LBS. STD. CABLE | TWO SHEAVE LOAD-BLOCK LOADS UP TO 38,400 LBS. STD. CABLE | TWO SHEAVE LOAD-BLOCK LOADS UP TO 48,000 LBS. STD. CABLE | |
| 6,700 LBS. ROT. RESIST. CABLE | 13,440 LBS. ROT. RESIST. CABLE | 20,160 LBS. ROT. RESIST. CABLE | 26,880 LBS. ROT. RESIST. CABLE | 33,600 LBS. ROT. RESIST. CABLE | |

THIS MACHINE COMPLIES WITH OSHA REGULATIONS 1910.102 AND 1926.102 WHERE APPLICABLE AT DATE OF MANUFACTURE

