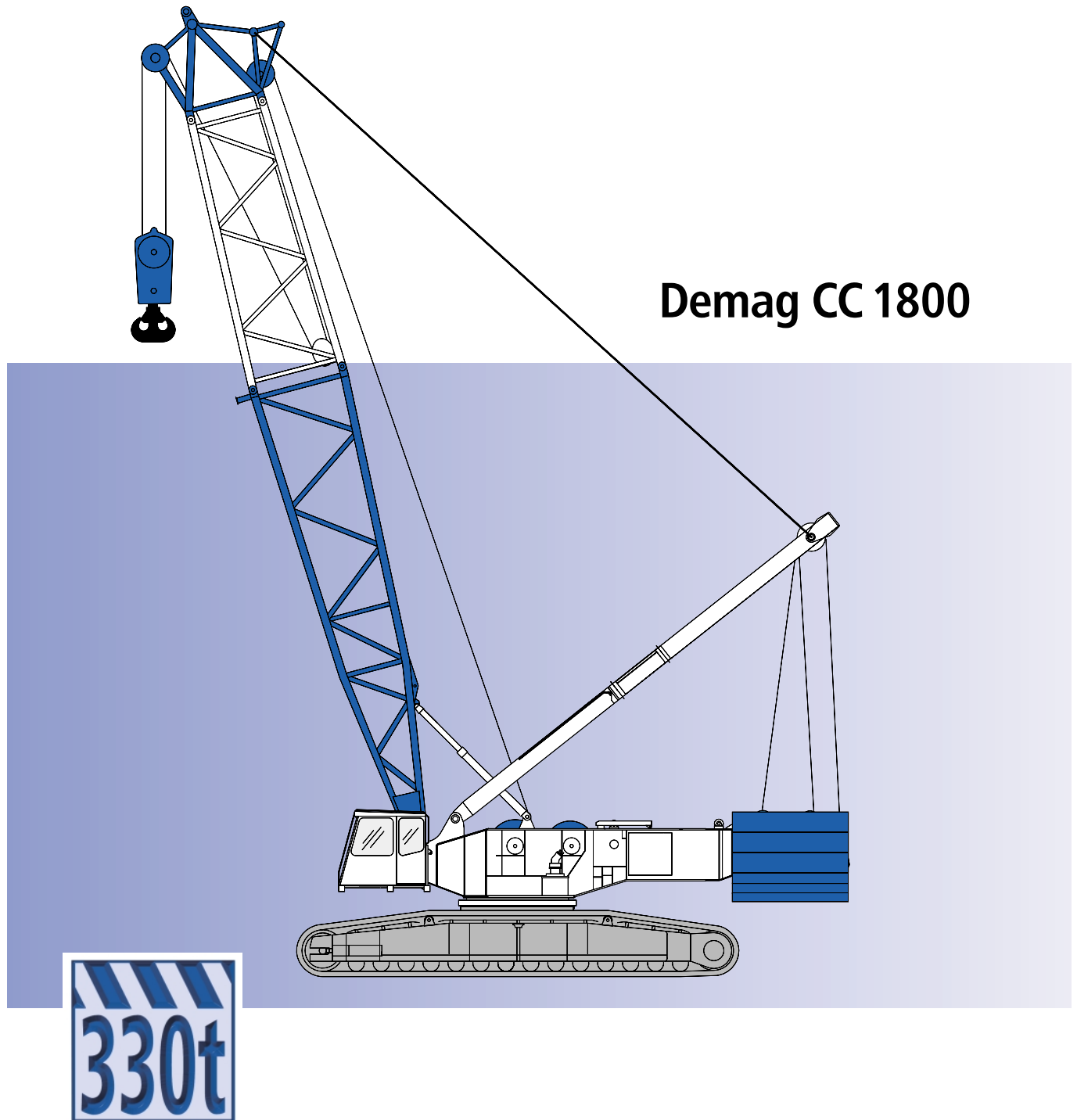


- Specifications
- Boom combinations
- Working ranges main boom
- Working ranges main boom with Superlift
- Working ranges fixed fly jib
- Technical description



Demag CC 1800



Key



Track



Counterweight



Superlift counterweight



Counterweight carrier (Lifting capacities for counterweight carrier on request)

„D“



S: Heavy

L: Light

H: Main boom

F: Fixed fly jib

W: Luffing fly jib

SL: Superlift

SGL Heavy base length 152.6 ft (type 2420)
152.6 ft:

SGL Heavy base length 231.3 ft (type 2420)
231.3 ft:



Contents

Specifications

Specifications	4
Boom combinations	8
Specifications	10

Main boom

Working ranges (SH, SH/LH)	11
Lifting capacities (SH, SH/LH)	12
Lifting capacities with Superlift (SSL, SSL/LSL)	14
Working ranges with Superlift (SSL, SSL/LSL)	18

Fixed fly jib

Working ranges (LF 10°, SGL 152.6 ft)	19
Lifting capacities (LF, SGL 152.6 ft)	20
Working ranges (LF 30°, SGL 152.6 ft)	24
Working ranges (LF 10°)	25
Lifting capacities	26
Working ranges (LF 30°)	30

Luffing fly jib

Working ranges (SW)	31
Lifting capacities (SW)	32
Working ranges with Superlift (SWSL)	35
Lifting capacities with Superlift (SWSL)	36

Technical description

Crawler carrier · Superstructure · Optional equipment	44
Boom combinations, S, S/L and L	45

Specifications

Carrier performance

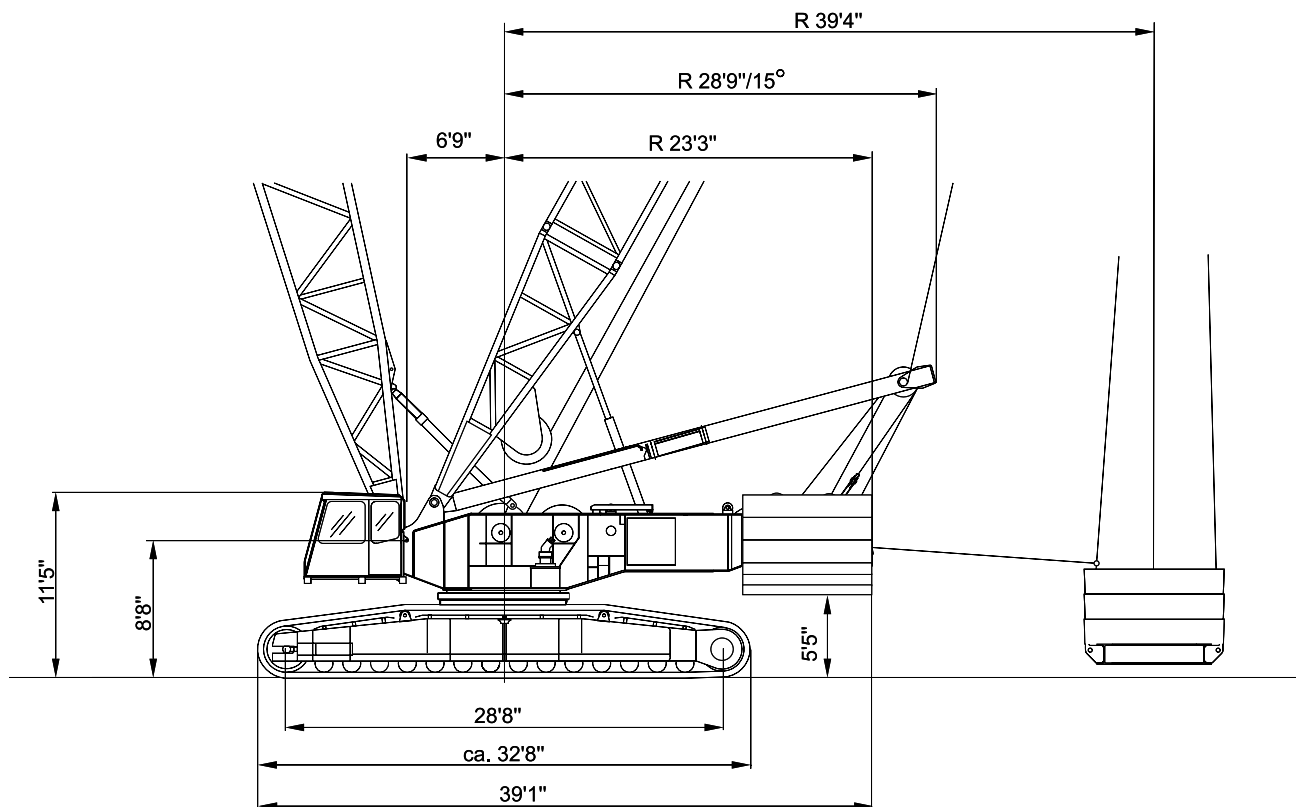
Travel speed max. 3 mph

Ground pressure

Ground pressure (based on total weight of 199 t) 11,2 N/cm²

Hook blocks

Capacity	Number of sheaves	Number of lines	Weight	„D“
661,400 lb	13	26	13,200 lb	11 ft
352,700 lb	7	13	10,600 lb	10 ft
176,400 lb	3	7	7,300 lb	8 ft
88,200 lb	1	3	3,800 lb	7 ft



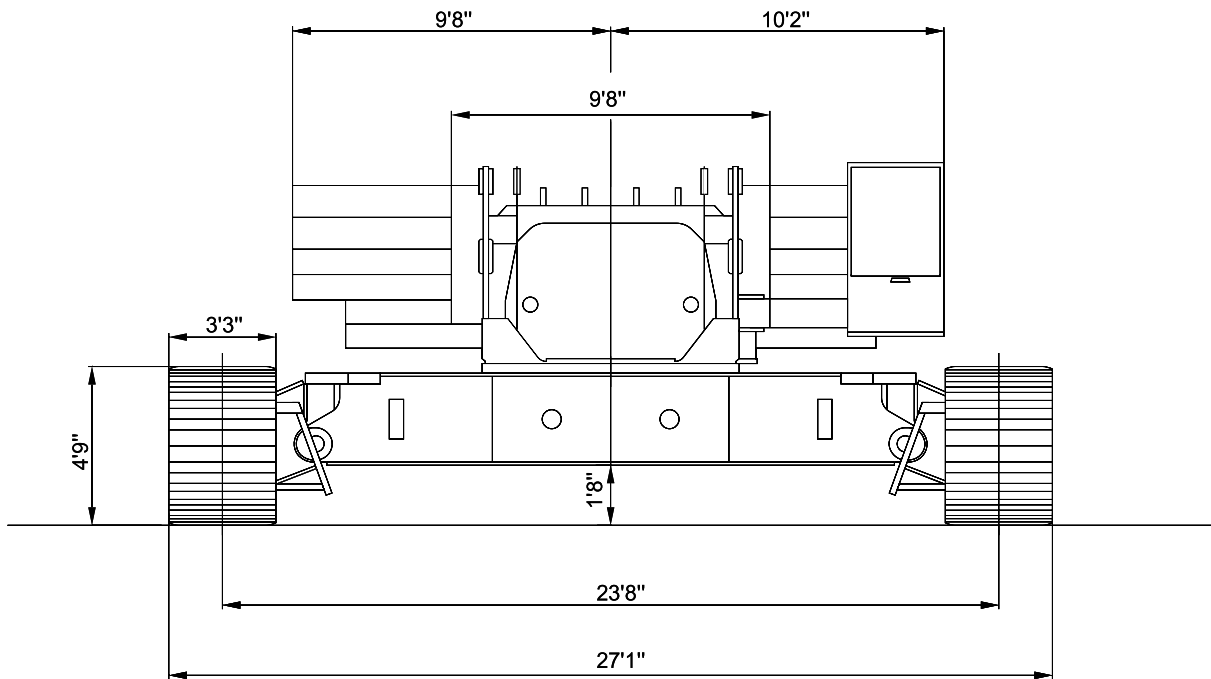
Specifications

Working speeds (infinitely variable)

Mechanisms	Speeds ¹⁾	Single line pull	Length of hoist rope
Hoist 1	max. 403.5 ft	30,700 lb / 27,200 lb ²⁾	3215.2 ft
Hoist 2	max. 390.4 ft	30,700 lb / 27,900 lb ²⁾	2132.5 ft
Boom derricking	max. 152.6 ft		2296.6 ft
Boom hoist	max. 82.0 ft		2 x 607.0 ft
Jib luffing	max. 141.1 ft		1476.4 ft
Slewing (RPM)	1,1		

¹⁾ Top layer

²⁾ Without/with reeving effect considered



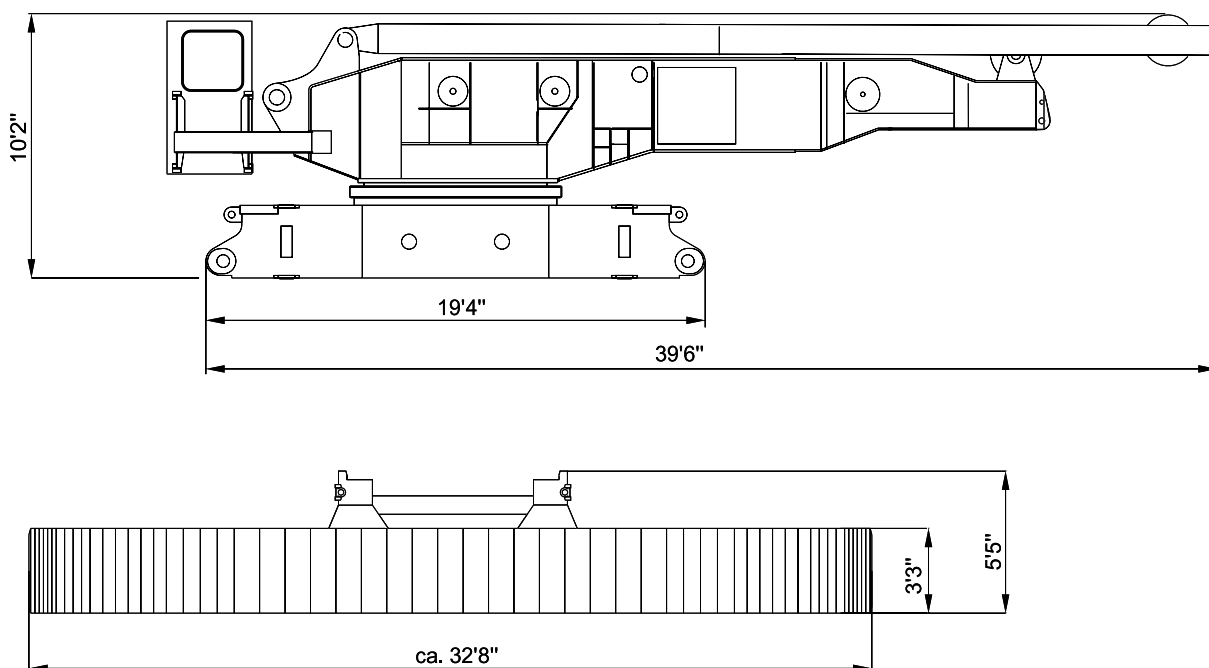
Specifications

Weights

Total weight incl. 198,400 lb counterweight, 59.1 ft SH boom and hook block	438,700 lb
Superstructure (with 2 winches, A-frame)	65,300 lb
Carbody without jacks	32,000 lb
Carbody with track shoes	36,400 lb
Crawlers with pads	52,900 lb

Machine versions

	Counterweight 198,400 lb	Add. counterweight 66,100 lb and central ballast 66,100 lb
Standard	●	
Option		●

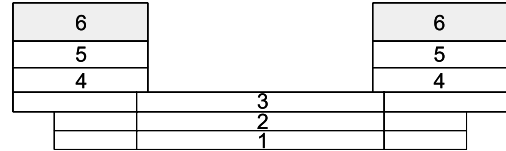


Specifications

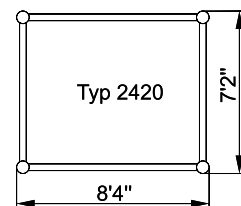
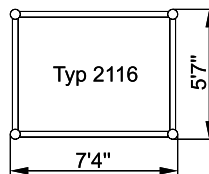
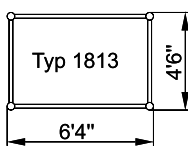
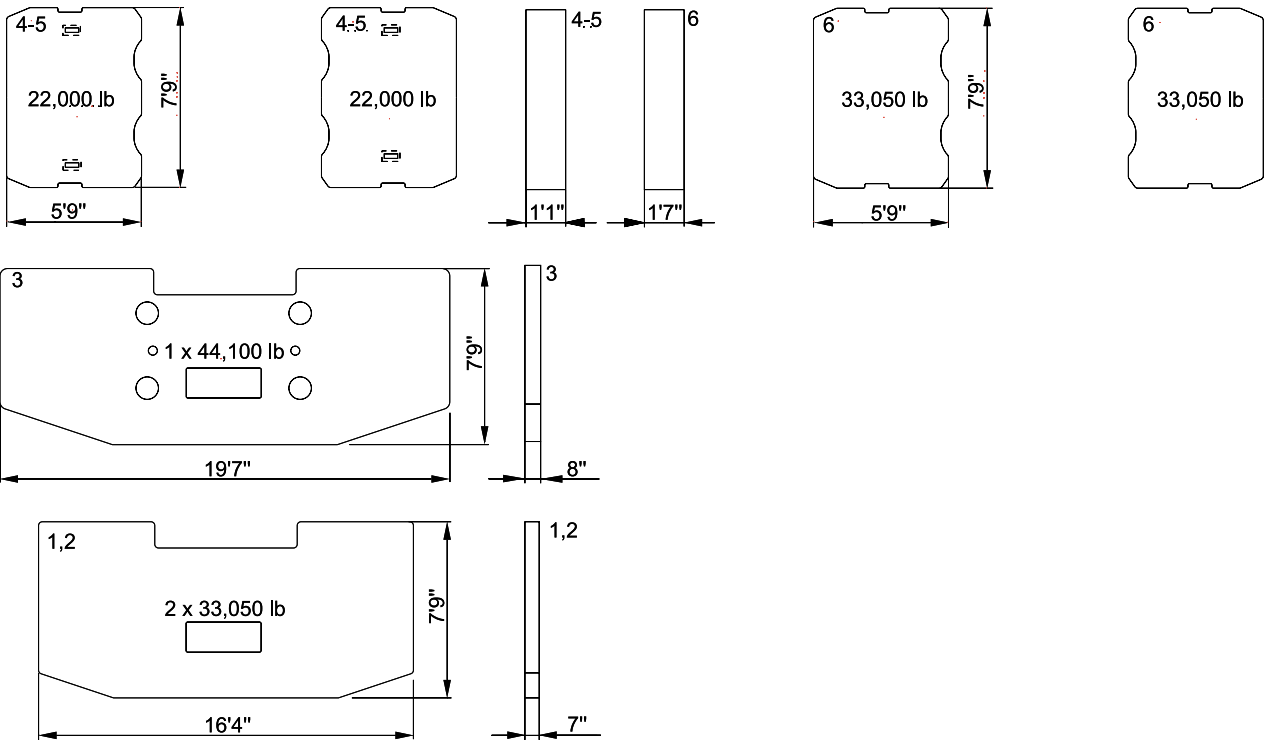
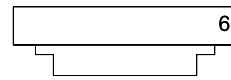
Standard configuration



Self-assembly configuration



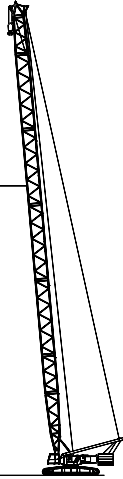
Central ballast



Boom combinations

Typ: 2420
59.1 - 236.2 ft

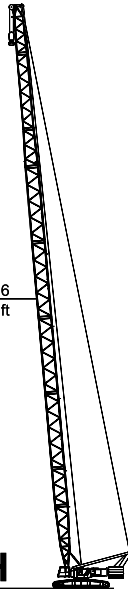
SH



Typ: 2420/2116
255.9 - 295.3 ft

SH/LH

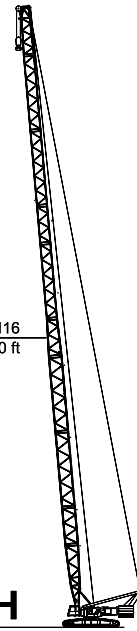
SGL 231.3 ft



Typ: 2420/2116
177.2 - 315.0 ft

SH/LH

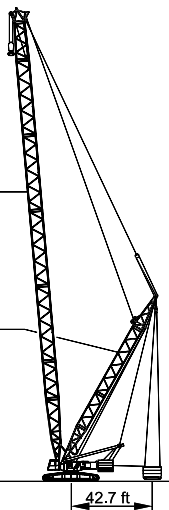
SGL 152.6 ft



Typ: 2420
98.4 - 236.2 ft

SSL¹⁾

Typ: 2116
98.4 ft



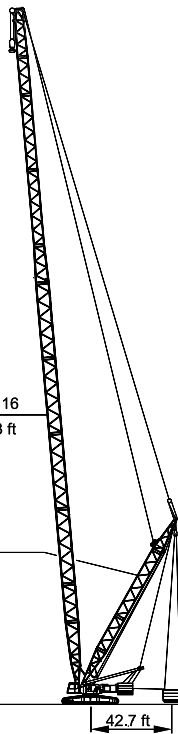
42.7 ft

Typ: 2420/2116
255.9 - 354.3 ft

SSL/LSL¹⁾

SGL 231.3 ft

Typ: 2116
98.4 ft



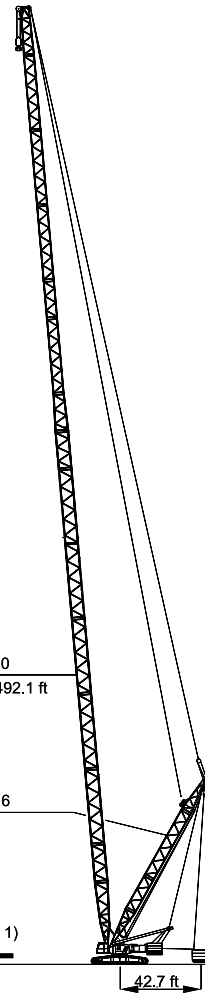
42.7 ft

Typ: 2420
255.9 - 492.1 ft

SSL/LSL¹⁾

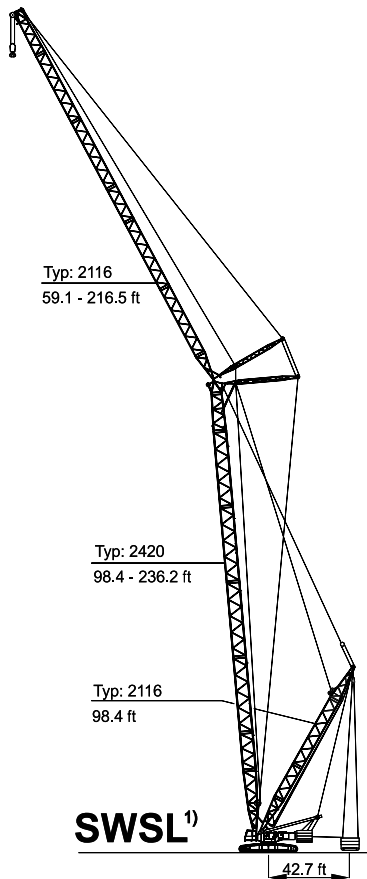
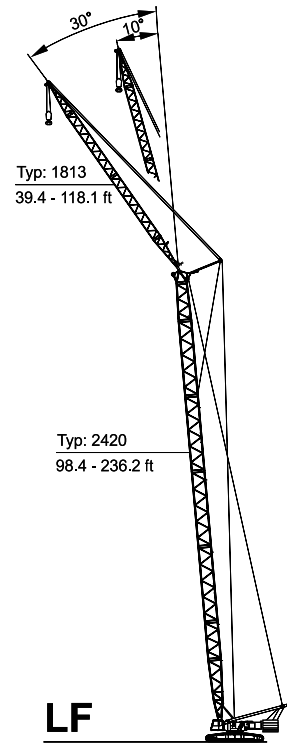
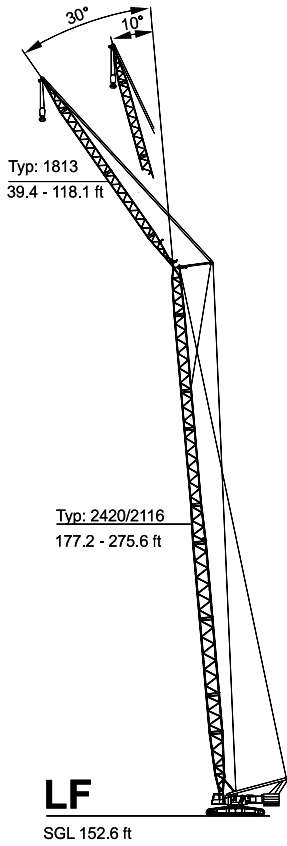
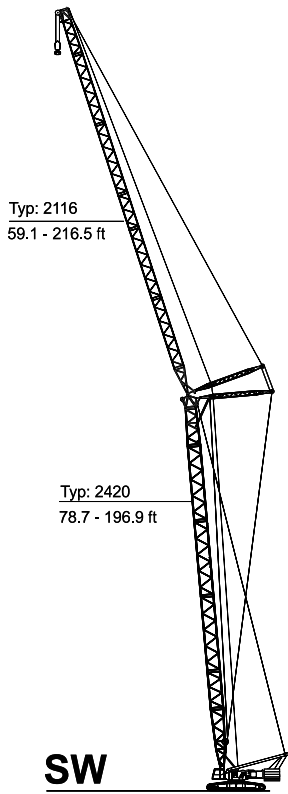
SGL 231.3 ft

Typ: 2116
98.4 ft



42.7 ft

Boom combinations



Remarks

1) Lifting capacities for counterweight carrier on request

Specifications

Erection / lowering of the CC 1800 boom systems to the ground

Version	Main boom ft	Fly jib ft	Counterweight lb	Central ballast lb	Remarks
SH	59.1 – 236.2	–	264,500	66,100	
SH/LH, SGL 152.6 ft	177.2 – 295.3 *315.0	– –	264,500 264,500	66,100 66,100	* Hook block on the ground
SH/LH, SGL 231.3 ft	255.9 – 275.6 *295.3	– –	264,500 264,500	66,100 66,100	* Hook block on the ground
SW	78.7 – 196.9	59.1 – 216.5	264,500	66,100	Without add. sheave assembly on boom head
	**196.9 *196.9	98.4 – 118.1 137.8	264,500	66,100	* Hook block on the ground
					** ONLY WITH ASSIST CRANE OR AUXILIARY EQUIPMENT
LF SGL 152.6 ft 10°, 30°	177.2 – 275.6	39.4 – 118.1	264,500	66,100	Without add. sheave assembly on boom head
	*255.9	118.1	264,500	66,100	* Hook block on the ground
	*275.6	78.7	264,500	66,100	
	**275.6	118.1	264,500	66,100	** ONLY WITH ASSIST CRANE OR AUXILIARY EQUIPMENT
LF 10°, 30°	98.4 – 236.2	39.4 – 118.1	264,500	66,100	Without add. sheave assembly on boom head
	*236.2	118.1	264,500	66,100	* Hook block on the ground
SSL	98.4 – 236.2	–	–	–	With SL-counterweight
SSL/LSL	225.9 – 354.3	–	–	–	With SL-counterweight
SWSL	98.4 – 236.2	59.1 – 216.5	–	–	With SL-counterweight

Remarks

All versions without runner!

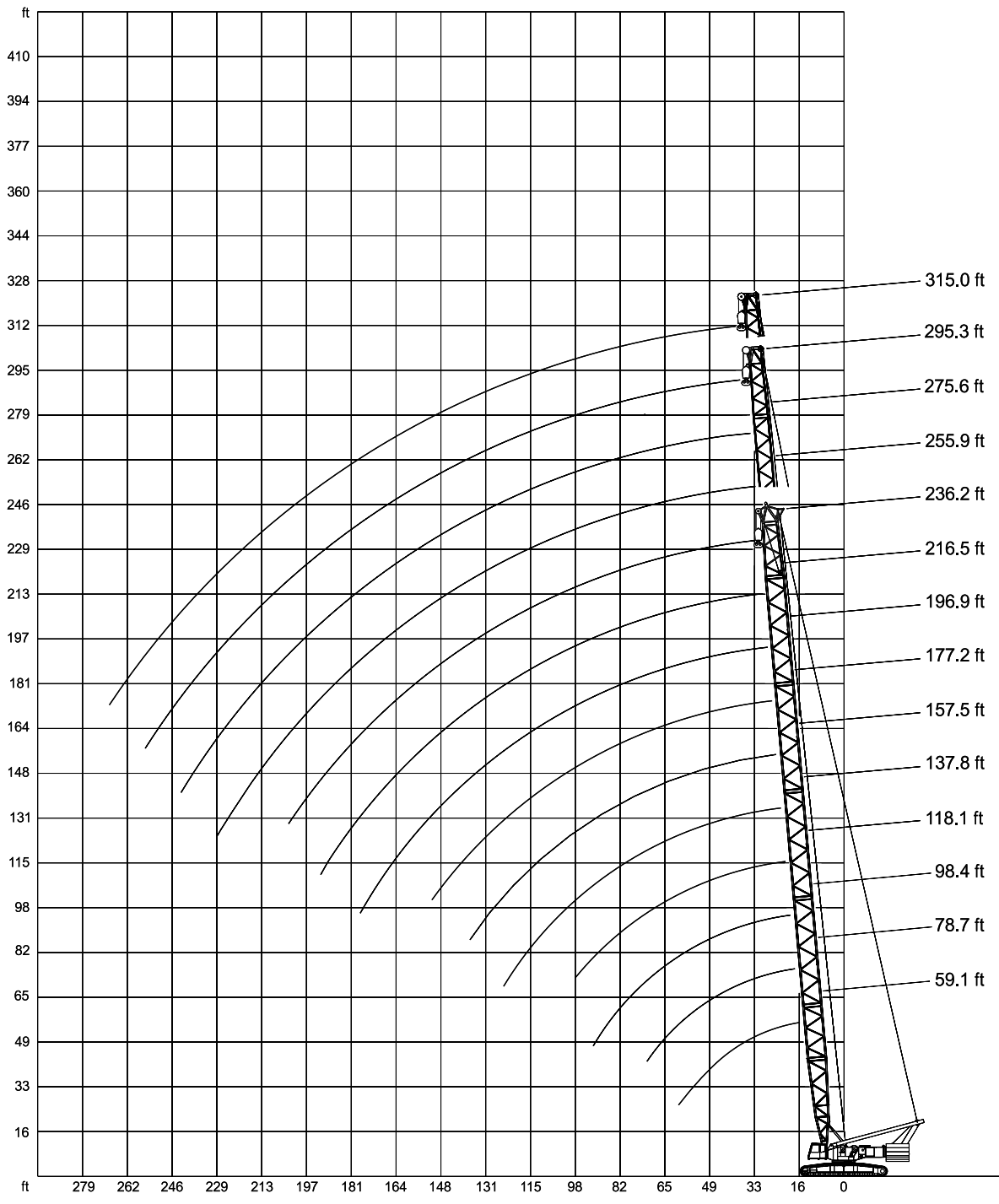
Further details on request!

Erection over idler wheel for all versions!



Working ranges main boom

SH, SH/LH



Lifting capacities main boom

264,500 lb¹⁾  **23.8 ft** **360°**

Radius	Main boom									
	59.1 ft	78.7 ft	98.4 ft	118.1 ft	137.8 ft	157.5 ft	177.2 ft	196.9 ft	216.5 ft	236.2 ft
	ft									
	1,000 lb									
16	601.9	-	-	-	-	-	-	-	-	-
18	579.8	628.3	-	-	-	-	-	-	-	-
21	546.7	593.0	-	-	-	-	-	-	-	-
23	526.9	573.2	555.6	-	-	-	-	-	-	-
26	500.4	537.9	535.7	533.5	529.1	-	-	-	-	-
30	440.9	438.7	436.5	436.5	434.3	434.3	-	-	-	-
33	370.4	368.2	366.0	366.0	363.8	363.8	361.6	306.4	-	-
39	286.6	284.4	282.2	280.0	280.0	277.8	275.6	273.4	246.9	207.2
45	233.7	231.5	229.3	227.1	224.9	224.9	222.7	222.7	218.3	198.4
51	196.2	194.0	191.8	189.6	187.4	185.2	185.2	183.0	183.0	178.6
57	165.3	163.1	160.9	158.7	158.7	156.5	154.3	154.3	152.1	152.1
63	-	143.3	141.1	138.9	136.7	134.5	134.5	132.3	132.3	130.1
69	-	125.7	123.5	121.3	119.0	119.0	116.8	116.8	114.6	114.6
75	-	-	110.2	108.0	105.8	103.6	103.6	101.4	101.4	99.2
81	-	-	99.2	97.0	94.8	92.6	92.6	90.4	88.2	88.2
87	-	-	90.4	88.2	86.0	83.8	81.6	81.6	79.4	79.4
93	-	-	-	79.4	77.2	75.0	75.0	72.8	72.8	70.5
99	-	-	-	-	70.5	68.3	66.1	66.1	63.9	63.9
111	-	-	-	-	59.5	57.3	55.1	55.1	52.9	52.9
123	-	-	-	-	50.7	48.5	46.3	46.3	44.1	41.9
135	-	-	-	-	-	41.9	39.7	37.5	37.5	35.3
147	-	-	-	-	-	-	35.3	33.1	30.9	28.7
159	-	-	-	-	-	-	-	26.5	26.5	24.3
171	-	-	-	-	-	-	-	24.3	22.0	19.8
183	-	-	-	-	-	-	-	-	17.6	15.4
195	-	-	-	-	-	-	-	-	-	13.2
203	-	-	-	-	-	-	-	-	-	11.0

264,500 lb¹⁾  **23.8 ft** **over front**

Radius	Main boom									
	59.1 ft	78.7 ft	98.4 ft	118.1 ft	137.8 ft	157.5 ft	177.2 ft	196.9 ft	216.5 ft	236.2 ft
	ft									
	1,000 lb									
16	661.4	-	-	-	-	-	-	-	-	-
18	661.4	661.4	-	-	-	-	-	-	-	-
21	643.8	641.5	-	-	-	-	-	-	-	-
23	617.3	615.1	555.6	-	-	-	-	-	-	-
26	542.3	537.9	535.7	533.5	529.1	-	-	-	-	-
30	469.6	465.2	463.0	460.8	458.6	443.1	-	-	-	-
33	418.9	414.5	412.3	410.1	407.9	405.7	366.0	308.6	-	-
39	348.3	346.1	343.9	339.5	337.3	335.1	332.9	295.4	246.9	207.2
45	280.0	277.8	277.8	275.6	273.4	273.4	271.2	264.6	235.9	198.4
51	233.7	231.5	229.3	227.1	224.9	224.9	222.7	222.7	216.1	187.4
57	196.2	194.0	194.0	191.8	189.6	187.4	187.4	185.2	185.2	176.4
63	-	169.8	167.6	165.3	163.1	163.1	160.9	158.7	158.7	158.7
69	-	149.9	147.7	145.5	143.3	141.1	141.1	138.9	138.9	136.7
75	-	-	130.1	127.9	125.7	123.5	123.5	121.3	121.3	119.0
81	-	-	116.8	114.6	112.4	110.2	110.2	108.0	108.0	105.8
87	-	-	105.8	103.6	101.4	99.2	99.2	97.0	97.0	94.8
93	-	-	-	94.8	92.6	90.4	88.2	88.2	86.0	86.0
99	-	-	-	-	83.8	81.6	81.6	79.4	77.2	77.2
111	-	-	-	-	70.5	68.3	68.3	66.1	66.1	63.9
123	-	-	-	-	61.7	59.5	57.3	55.1	55.1	52.9
135	-	-	-	-	-	50.7	48.5	48.5	46.3	44.1
147	-	-	-	-	-	-	41.9	41.9	39.7	37.5
159	-	-	-	-	-	-	-	35.3	33.1	30.9
171	-	-	-	-	-	-	-	30.9	28.7	26.5
183	-	-	-	-	-	-	-	-	24.3	22.0
190	-	-	-	-	-	-	-	-	22.0	19.8
195	-	-	-	-	-	-	-	-	-	19.8

Remarks ¹⁾ with 66,100 lb central ballast

Lifting capacities main boom

264,500 lb¹⁾  **23.8 ft** **360°**

Radius	Main boom										
	177.2 ft	196.9 ft	216.5 ft	236.2 ft	255.9 ft	275.6 ft	295.3 ft	315.0 ft	255.9 ft	275.6 ft	295.3 ft
	1,000 lb								1,000 lb		
ft											
30	308.6	-	-	-	-	-	-	-	-	-	-
33	306.4	257.9	224.9	-	-	-	-	-	-	-	-
39	280.0	242.5	209.4	-	-	-	-	-	-	-	-
45	229.3	224.9	194.0	172.0	152.1	130.1	-	-	163.1	152.1	-
51	191.8	191.8	180.8	158.7	143.3	125.7	101.4	88.2	154.3	147.7	119.0
57	163.1	160.9	158.7	145.5	134.5	121.3	99.2	83.8	143.3	145.5	116.8
63	141.1	138.9	138.9	134.5	127.9	119.0	94.8	79.4	132.3	134.5	112.4
69	123.5	123.5	123.5	121.3	119.0	114.6	90.4	77.2	119.0	119.0	108.0
75	110.2	108.0	108.0	108.0	108.0	105.8	88.2	75.0	105.8	103.6	101.4
81	99.2	97.0	97.0	97.0	94.8	94.8	83.8	72.8	94.8	92.6	92.6
87	88.2	88.2	88.2	86.0	86.0	86.0	81.6	70.5	83.8	83.8	81.6
93	81.6	79.4	79.4	79.4	77.2	77.2	77.2	68.3	77.2	75.0	75.0
SH/LH ²⁾ 99	72.8	72.8	72.8	70.5	70.5	70.5	68.3	66.1	SH/LH ³⁾ 68.3	68.3	66.1
111	61.7	61.7	61.7	59.5	59.5	57.3	57.3	57.3	57.3	57.3	55.1
123	52.9	52.9	50.7	50.7	50.7	48.5	48.5	48.5	48.5	46.3	46.3
135	46.3	46.3	44.1	44.1	44.1	44.1	41.9	39.7	41.9	39.7	39.7
147	41.9	39.7	39.7	37.5	37.5	35.3	35.3	33.1	35.3	33.1	33.1
159	-	35.3	33.1	33.1	30.9	30.9	28.7	28.7	28.7	28.7	26.5
171	-	30.9	28.7	28.7	26.5	26.5	24.3	24.3	26.5	24.3	22.0
183	-	-	26.5	24.3	24.3	22.0	22.0	19.8	22.0	20.7	20.1
195	-	-	-	22.0	19.8	19.8	17.6	17.6	19.4	17.6	17.0
207	-	-	-	-	17.6	15.4	15.4	13.2	16.5	14.8	13.9
219	-	-	-	-	15.4	13.2	13.2	11.0	14.1	12.1	11.5
231	-	-	-	-	-	11.0	11.0	8.8	-	10.1	9.3
243	-	-	-	-	-	-	8.8	-	-	-	-
255	-	-	-	-	-	-	6.6	-	-	-	-

264,500 lb¹⁾  **23.8 ft** **over front**

Radius	Main boom										
	177.2 ft	196.9 ft	216.5 ft	236.2 ft	255.9 ft	275.6 ft	295.3 ft	315.0 ft	255.9 ft	275.6 ft	295.3 ft
	1,000 lb								1,000 lb		
ft											
30	308.6	-	-	-	-	-	-	-	-	-	-
33	306.4	257.9	224.9	-	-	-	-	-	-	-	-
39	297.6	242.5	209.4	-	-	-	-	-	-	-	-
45	271.2	229.3	194.0	172.0	152.1	130.1	-	-	165.3	152.1	-
51	229.3	213.8	180.8	158.7	143.3	125.7	101.4	88.2	154.3	147.7	119.0
57	194.0	189.6	165.3	145.5	134.5	121.3	99.2	83.8	143.3	145.5	116.8
63	167.6	165.3	154.3	134.5	127.9	119.0	94.8	79.4	134.5	141.1	112.4
69	147.7	145.5	141.1	125.7	119.0	116.8	90.4	77.2	125.7	134.5	108.0
75	130.1	127.9	127.9	114.6	112.4	114.6	88.2	75.0	116.8	123.5	105.8
81	116.8	114.6	114.6	105.8	105.8	110.2	83.8	72.8	108.0	110.2	103.6
87	105.8	103.6	103.6	99.2	99.2	101.4	81.6	70.5	99.2	99.2	99.2
93	94.8	94.8	94.8	90.4	92.6	92.6	79.4	68.3	90.4	90.4	90.4
99	86.0	86.0	86.0	83.8	83.8	83.8	75.0	66.1	81.6	81.6	81.6
SH/LH ²⁾ 111	75.0	72.8	72.8	70.5	70.5	70.5	68.3	63.9	SH/LH ³⁾ 68.3	68.3	68.3
123	63.9	61.7	61.7	61.7	59.5	59.5	59.5	57.3	59.5	57.3	57.3
135	55.1	55.1	52.9	52.9	52.9	50.7	50.7	48.5	50.7	48.5	48.5
147	48.5	48.5	46.3	44.1	46.3	44.1	44.1	41.9	44.1	41.9	41.9
159	-	41.9	41.9	37.5	39.7	37.5	37.5	35.3	37.5	35.3	35.3
171	-	37.5	37.5	33.1	35.3	33.1	33.1	30.9	33.1	30.9	30.9
183	-	-	33.1	28.7	30.9	28.7	28.7	26.5	28.7	26.5	26.5
195	-	-	-	24.3	26.5	24.3	24.3	22.0	24.3	22.0	22.0
207	-	-	-	-	24.3	22.0	22.0	19.8	21.4	20.5	19.6
219	-	-	-	-	19.8	19.8	17.6	17.6	19.4	17.6	16.8
231	-	-	-	-	-	15.4	15.4	13.2	-	15.2	14.3
243	-	-	-	-	-	-	13.2	11.0	-	-	12.1
255	-	-	-	-	-	-	11.0	8.8	-	-	10.1
267	-	-	-	-	-	-	-	8.8	-	-	-
269	-	-	-	-	-	-	-	6.6	-	-	-

Remarks

¹⁾ with 66,100 lb central ballast ²⁾ Heavy base length 152.6 ft (type 2420) ³⁾ Heavy base length 231.3 ft (type 2420)

Lifting capacities main boom with Superlift

Main boom: 98.4 ft SL-Radius 44.3 ft

264,500 lb¹⁾   **23.8 ft** **360°**

	Radius lb							
	0	88,2	176,4	264,6	352,7	396,8	440,9	
	ft							
	1,000 lb							
	21	476.2	619.5	-	-	-	-	661.4
	23	456.4	619.5	-	-	-	-	661.4
	26	434.3	610.7	661.4	-	-	-	661.4
	30	412.3	571.0	654.8	-	-	-	659.2
	33	370.4	515.9	595.2	634.9	-	-	639.3
	39	302.0	421.1	507.1	573.2	-	-	606.3
	45	246.9	352.7	436.5	500.4	-	-	571.0
SSL	51	205.0	297.6	377.0	440.9	493.8	518.1	518.1
	57	174.2	253.5	326.3	390.2	440.9	463.0	463.0
	63	152.1	220.5	288.8	346.1	399.0	418.9	418.9
	69	134.5	196.2	257.9	310.9	361.6	383.6	383.6
	75	119.0	174.2	231.5	280.0	326.3	348.3	348.3
	81	108.0	158.7	209.4	255.7	299.8	319.7	319.7
	87	97.0	145.5	191.8	235.9	275.6	284.4	284.4
	93	90.4	134.5	178.6	220.5	255.7	255.7	255.7

Main boom: 137.8 ft SL-Radius 44.3 ft

264,500 lb¹⁾   **23.8 ft** **360°**

	Radius lb							
	0	88,2	176,4	264,6	352,7	396,8	440,9	
	ft							
	1,000 lb							
	23	524.7	551.2	-	-	-	-	-
	26	449.7	551.2	604.1*	-	-	-	615.1*
	30	405.7	546.7	601.9*	-	-	-	615.1*
	33	366.0	509.3	590.8*	601.9*	-	-	615.1*
	39	299.8	421.1	500.4	566.6	-	-	615.1*
	45	242.5	348.3	434.3	493.8	551.2	-	577.6*
	51	202.8	293.2	374.8	436.5	489.4	515.9	515.9
SSL	57	172.0	249.1	324.1	388.0	434.3	458.6	458.6
	63	147.7	218.3	286.6	346.1	392.4	414.5	414.5
	69	130.1	191.8	253.5	308.6	357.1	377.0	377.0
	75	114.6	172.0	227.1	277.8	324.1	343.9	343.9
	81	103.6	154.3	205.0	253.5	297.6	317.5	317.5
	87	92.6	141.1	187.4	233.7	273.4	293.2	293.2
	93	86.0	127.9	172.0	216.1	253.5	271.2	271.2
	99	77.2	116.8	158.7	198.4	233.7	251.3	251.3
	111	66.1	101.4	136.7	172.0	205.0	220.5	220.5
	123	57.3	88.2	121.3	152.1	180.8	194.0	194.0

Main boom: 118.1 ft SL-Radius 44.3 ft

264,500 lb¹⁾   **23.8 ft** **360°**

	Radius lb							
	0	88,2	176,4	264,6	352,7	396,8	440,9	
	ft							
	1,000 lb							
	23	504.9	634.9	-	-	-	-	634.9
	26	451.9	621.7	634.9	-	-	-	634.9
	30	407.9	568.8	630.5	-	-	-	634.9
	33	368.2	511.5	593.0	630.5	-	-	632.7
	39	299.8	421.1	502.7	568.8	-	-	617.3
	45	244.7	350.5	436.5	496.0	553.4	-	579.8
	51	205.0	295.4	377.0	483.7	491.6	518.1	518.1
SSL	57	172.0	251.3	326.3	388.0	436.5	460.8	460.8
	63	149.9	218.3	286.6	346.1	394.6	416.7	416.7
	69	132.3	194.0	255.7	310.9	359.4	379.2	379.2
	75	116.8	172.0	229.3	280.0	326.3	346.1	346.1
	81	105.8	156.5	207.2	255.7	297.6	319.7	319.7
	87	94.8	143.3	189.6	233.7	273.4	295.4	295.4
	93	88.2	130.1	174.2	216.1	253.5	273.4	273.4
	98	79.4	121.3	160.9	200.6	235.9	253.5	253.5

Main boom: 157.5 ft SL-Radius 44.3 ft

264,500 lb¹⁾   **23.8 ft** **360°**

	Radius lb							
	0	88,2	176,4	264,6	352,7	396,8	440,9	
	ft							
	1,000 lb							
	26	460.8	511.5*	-	-	-	-	533.5*
	30	405.7	511.5*	533.5*	-	-	-	533.5*
	33	363.8	504.9*	531.3*	-	-	-	533.5*
	39	297.6	423.3	496.0*	-	-	-	533.5*
	45	242.5	348.3	434.3	489.4	-	-	533.5*
	51	200.6	291.0	374.8	434.3	485.0	-	504.9*
	57	169.8	246.9	324.1	385.8	432.1	456.4	456.4
SSL	63	147.7	216.1	284.4	343.9	390.2	412.3	412.3
	69	130.1	191.8	253.5	308.6	354.9	374.8	374.8
	75	114.6	169.8	224.9	277.8	324.1	341.7	341.7
	81	101.4	152.1	202.8	253.5	297.6	315.3	315.3
	87	92.6	138.9	185.2	231.5	273.4	293.2	293.2
	93	83.8	127.9	169.8	213.8	251.3	271.2	271.2
	99	77.2	116.8	156.5	196.2	233.7	251.3	251.3
	111	63.9	99.2	134.5	169.8	202.8	218.3	218.3
	123	55.1	86.0	119.0	149.9	178.6	194.0	194.0
	135	48.5	77.2	105.8	134.5	160.9	174.2	174.2

Remarks

* Hook block does not reach the ground

¹⁾ with 66,100 lb central ballast

Lifting capacities main boom with Superlift

Main boom: 177.2 ft SL-Radius 44.3 ft

264,500 lb¹⁾ 23.8 ft 360°

	Radius lb							440,9
	0	88,2	176,4	264,6	352,7	396,8	440,9	
ft	1,000 lb							
30	403.4	438.7	-	-	-	-	480.6*	
33	361.6	429.9	460.8*	-	-	-	478.4*	
39	295.4	418.9	460.8*	-	-	-	469.6*	
45	240.3	346.1	425.5	460.8*	-	-	451.9*	
51	200.6	291.0	374.8	427.7	-	-	432.1	
57	167.6	246.9	324.1	383.6	412.3	-	412.3	
63	145.5	213.8	284.4	343.9	385.8	-	394.6	
69	127.9	189.6	251.3	308.6	352.7	370.4	370.4	
75	112.4	167.6	222.7	277.8	321.9	339.5	339.5	
81	101.4	152.1	202.8	253.5	295.4	313.1	313.1	
87	90.4	136.7	185.2	231.5	271.2	291.0	291.0	
93	81.6	125.7	169.8	211.6	251.3	271.2	271.2	
99	75.0	114.6	154.3	196.2	231.5	249.1	249.1	
111	61.7	97.0	134.5	169.8	202.8	218.3	218.3	
123	52.9	83.8	116.8	147.7	178.6	191.8	191.8	
135	46.3	75.0	103.6	132.3	158.7	172.0	172.0	
147	39.7	66.1	92.6	119.0	143.3	154.3	154.3	

SSL

Main boom: 216.5 ft SL-Radius 44.3 ft

264,500 lb¹⁾ 23.8 ft 360°

	Radius lb							440,9
	0	88,2	176,4	264,6	352,7	396,8	440,9	
ft	1,000 lb							
33	308.6	317.5	-	-	-	-	348.3	
39	291.0	317.5	-	-	-	-	348.3	
45	238.1	310.9	332.9	-	-	-	348.3	
51	198.4	282.2	332.9	-	-	-	348.3	
57	165.3	244.7	313.1	330.7	-	-	343.9	
63	143.3	211.6	282.2	317.5	-	-	332.9	
69	125.7	187.4	249.1	302.0	321.9	-	321.9	
75	110.2	165.3	220.5	277.8	310.9	-	310.9	
81	99.2	149.9	200.6	251.3	293.2	299.8	299.8	
87	88.2	134.5	180.8	229.3	271.2	286.6	286.6	
93	79.4	123.5	165.3	209.4	251.3	266.8	266.8	
99	72.8	112.4	152.1	191.8	231.5	249.1	249.1	
111	59.5	94.8	130.1	165.3	200.6	216.1	216.1	
123	50.7	81.6	114.6	145.5	176.4	191.8	191.8	
135	41.9	72.8	99.2	127.9	156.5	169.8	169.8	
147	35.3	63.9	88.2	114.6	141.1	152.1	152.1	
159	30.9	55.1	79.4	103.6	127.9	138.9	138.9	
171	26.5	50.7	72.8	94.8	116.8	125.7	125.7	
183	22.0	44.1	63.9	86.0	105.8	114.6	114.6	

SSL

Main boom: 196.9 ft SL-Radius 44.3 ft

264,500 lb¹⁾ 23.8 ft 360°

	Radius lb							440,9
	0	88,2	176,4	264,6	352,7	396,8	440,9	
ft	1,000 lb							
30	368.2	372.6	-	-	-	-	443.1*	
33	363.8	372.6	-	-	-	-	443.1*	
39	295.4	372.6	-	-	-	-	443.1*	
45	240.3	339.5	399.0*	-	-	-	443.1*	
51	198.4	288.8	370.4	399.0*	-	-	425.5	
57	167.6	244.7	324.1	377.0	-	-	405.7	
63	145.5	213.8	282.2	343.9	381.4	-	388.0	
69	125.7	187.4	249.1	308.6	352.7	366.0	366.0	
75	110.2	167.6	222.7	277.8	319.7	339.5	339.5	
81	99.2	149.9	200.6	251.3	295.4	313.1	313.1	
87	90.4	136.7	183.0	229.3	271.2	288.8	288.8	
93	81.6	123.5	167.6	211.6	251.3	269.0	269.0	
99	72.8	112.4	154.3	194.0	231.5	249.1	249.1	
111	61.7	97.0	132.3	167.6	202.8	218.3	218.3	
123	50.7	83.8	114.6	147.7	178.6	191.8	191.8	
135	44.1	72.8	101.4	130.1	158.7	172.0	172.0	
147	37.5	63.9	90.4	116.8	143.3	154.3	154.3	
159	33.1	57.3	81.6	105.8	127.9	138.9	138.9	
171	28.7	50.7	72.8	94.8	116.8	127.9	127.9	

SSL

Main boom: 236.2 ft SL-Radius 44.3 ft

264,500 lb¹⁾ 23.8 ft 360°

	Radius lb							440,9
	0	88,2	176,4	264,6	352,7	396,8	440,9	
ft	1,000 lb							
33	266.8	273.4	-	-	-	-	310.9	
39	266.8	273.4	-	-	-	-	310.9	
45	233.7	273.4	-	-	-	-	310.9	
51	196.2	266.8	288.8	-	-	-	310.9	
57	165.3	240.3	288.8	-	-	-	310.9	
63	143.3	211.6	273.4	288.8	-	-	304.2	
69	123.5	185.2	246.9	277.8	-	-	297.6	
75	108.0	165.3	220.5	264.6	288.8	-	288.8	
81	97.0	147.7	198.4	249.1	280.0	-	280.0	
87	86.0	134.5	180.8	227.1	269.0	273.4	273.4	
93	79.4	121.3	165.3	209.4	251.3	264.6	264.6	
99	70.5	110.2	152.1	191.8	231.5	246.9	246.9	
111	59.5	94.8	130.1	165.3	200.6	216.1	216.1	
123	48.5	81.6	112.4	143.3	176.4	189.6	189.6	
135	41.9	70.5	99.2	127.9	156.5	169.8	169.8	
147	35.3	61.7	88.2	112.4	138.9	152.1	152.1	
159	28.7	55.1	77.2	101.4	125.7	136.7	136.7	
171	24.3	48.5	70.5	92.6	114.6	125.7	125.7	
183	19.8	41.9	63.9	83.8	103.6	114.6	114.6	
195	17.6	37.5	57.3	77.2	97.0	105.8	105.8	

SSL

Remarks

* Hook block does not reach the ground ¹⁾ with 66,100 lb central ballast

Lifting capacities main boom with Superlift

Main boom: 255.9 ft SL-Radius 44.3 ft

264,500 lb¹⁾ 23.8 ft 360°

	Radius lb						
	0	88,2	176,4	264,6	352,7	396,8	440,9
	ft						
	1,000 lb						
33	235.9	-	-	-	-	-	260.1
39	235.9	-	-	-	-	-	260.1
45	231.5	235.9	-	-	-	-	260.1
51	200.6	235.9	-	-	-	-	260.1
57	169.8	235.9	244.7	-	-	-	260.1
63	147.7	216.1	244.7	-	-	-	260.1
69	127.9	189.6	240.3	-	-	-	260.1
75	112.4	169.8	224.9	249.1	-	-	260.1
81	101.4	152.1	202.8	244.7	-	-	257.9
87	90.4	138.9	185.2	231.5	257.9	-	257.9
93	83.8	125.7	169.8	213.8	253.5	255.7	255.7
99	75.0	114.6	156.5	196.2	235.9	251.3	251.3
SSL/							
LSL							
111	63.9	99.2	134.5	169.8	205.0	222.7	222.7
123	52.9	86.0	116.8	147.7	180.8	196.2	196.2
135	46.3	75.0	103.6	132.3	160.9	174.2	174.2
147	39.7	66.1	92.6	119.0	143.3	156.5	156.5
159	35.3	59.5	81.6	105.8	130.1	141.1	141.1
171	28.7	52.9	75.0	97.0	119.0	130.1	130.1
183	26.5	46.3	68.3	88.2	108.0	119.0	119.0
195	22.0	41.9	61.7	81.6	99.2	110.2	110.2
207	19.8	37.5	57.3	75.0	92.6	101.4	101.4
219	17.6	35.3	52.9	68.3	86.0	94.8	94.8

Main boom: 295.3 ft SL-Radius 44.3 ft

264,500 lb¹⁾ 23.8 ft 360°

	Radius lb						
	0	88,2	176,4	264,6	352,7	396,8	
	ft						
	1,000 lb						
39	169.8	-	-	-	-	-	189.6
45	167.6	-	-	-	-	-	189.6
51	167.6	172.0	-	-	-	-	187.4
57	160.9	172.0	-	-	-	-	185.2
63	145.5	172.0	-	-	-	-	185.2
69	127.9	172.0	174.2	-	-	-	185.2
75	112.4	165.3	174.2	-	-	-	183.0
81	99.2	149.9	174.2	-	-	-	183.0
87	90.4	136.7	172.0	-	-	-	180.8
93	81.6	125.7	167.6	176.4	-	-	178.6
99	72.8	114.6	154.3	174.2	-	-	176.4
SSL/							
LSL							
111	61.7	97.0	132.3	167.6	-	-	167.6
123	52.9	83.8	114.6	147.7	-	-	158.7
135	44.1	72.8	101.4	130.1	147.7	-	147.7
147	37.5	63.9	90.4	116.8	136.7	-	136.7
159	33.1	57.3	81.6	103.6	123.5	-	123.5
171	28.7	50.7	72.8	94.8	110.2	-	110.2
183	24.3	44.1	66.1	86.0	99.2	-	99.2
195	19.8	39.7	59.5	79.4	86.0	-	86.0
207	17.6	35.3	55.1	72.8	77.2	-	77.2
219	15.4	33.1	50.7	66.1	66.1	-	66.1
231	11.0	28.7	46.3	59.5	59.5	-	59.5
243	11.0	26.5	41.9	52.9	52.9	-	52.9
255	8.8	24.3	39.7	50.7	50.7	-	50.7

Main boom: 275.6 ft SL-Radius 44.3 ft

	Radius lb						
	0	88,2	176,4	264,6	352,7	396,8	
	ft						
	1,000 lb						
39	196.2	200.6	-	-	-	-	220.5
45	196.2	200.6	-	-	-	-	220.5
51	191.8	200.6	-	-	-	-	220.5
57	167.6	200.6	-	-	-	-	220.5
63	145.5	200.6	207.2	-	-	-	220.5
69	127.9	187.4	207.2	-	-	-	218.3
75	112.4	167.6	207.2	-	-	-	218.3
81	101.4	152.1	200.6	211.6	-	-	216.1
87	90.4	136.7	183.0	209.4	-	-	213.8
93	81.6	125.7	167.6	205.0	-	-	207.2
99	75.0	114.6	154.3	194.0	-	-	200.6
SSL/							
LSL							
111	61.7	97.0	132.3	167.6	-	-	185.2
123	52.9	83.8	116.8	147.7	167.6	-	167.6
135	44.1	72.8	101.4	130.1	152.1	-	152.1
147	37.5	63.9	90.4	116.8	138.9	-	138.9
159	33.1	57.3	81.6	105.8	125.7	-	125.7
171	28.7	50.7	72.8	94.8	114.6	-	114.6
183	24.3	46.3	66.1	86.0	103.6	-	103.6
195	19.8	41.9	59.5	79.4	94.8	-	94.8
207	17.6	37.5	55.1	72.8	88.2	-	88.2
219	15.4	33.1	50.7	68.3	79.4	-	79.4
231	13.2	30.9	46.3	61.7	70.5	-	70.5
243	11.0	26.5	44.1	57.3	63.9	-	63.9

Remarks

¹⁾ with 66,100 lb central ballast



Lifting capacities main boom with Superlift

Main boom: 315.0 ft SL-Radius 44.3 ft

264,500 lb¹⁾ 23.8 ft 360°

Radius lb	0	88,2	176,4	264,6	352,7	396,8	440,9	
ft	1,000 lb							
39	145.5	-	-	-	-	-	154.3	
45	145.5	-	-	-	-	-	154.3	
51	145.5	147.7	-	-	-	-	152.1	
57	145.5	147.7	-	-	-	-	152.1	
63	138.9	145.5	-	-	-	-	149.9	
69	125.7	145.5	-	-	-	-	149.9	
75	110.2	143.3	145.5	-	-	-	147.7	
81	99.2	141.1	143.3	-	-	-	145.5	
87	88.2	136.7	141.1	-	-	-	143.3	
93	79.4	123.5	141.1	-	-	-	143.3	
99	72.8	112.4	136.7	-	-	-	141.1	
111	59.5	97.0	130.1	-	-	-	136.7	
123	50.7	81.6	114.6	130.1	-	-	132.3	
135	44.1	72.8	101.4	125.7	-	-	127.9	
147	37.5	63.9	88.2	114.6	-	-	123.5	
159	30.9	55.1	79.4	103.6	116.8	-	116.8	
171	26.5	48.5	70.5	92.6	112.4	112.4	112.4	
183	22.0	44.1	63.9	86.0	105.8	105.8	105.8	
195	17.6	39.7	59.5	77.2	97.0	101.4	101.4	
207	15.4	35.3	52.9	70.5	88.2	94.8	94.8	
219	13.2	30.9	48.5	66.1	81.6	88.2	88.2	
231	11.0	26.5	44.1	59.5	77.2	83.8	83.8	
243	8.8	24.3	39.7	55.1	70.5	77.2	77.2	
255	6.6	22.0	37.5	52.9	66.1	70.5	70.5	
267	-	19.8	33.1	48.5	61.7	63.9	63.9	

SSL/
LSL

Main boom: 354.4 ft SL-Radius 44.3 ft

264,500 lb¹⁾ 23.8 ft 360°

Radius lb	0	88,2	176,4	264,6	352,7	396,8	440,9	
ft	1,000 lb							
45	94.8	-	-	-	-	-	103.6	
51	92.6	-	-	-	-	-	103.6	
57	92.6	-	-	-	-	-	101.4	
63	90.4	92.6	-	-	-	-	97.0	
69	88.2	90.4	-	-	-	-	94.8	
75	86.0	88.2	-	-	-	-	92.6	
81	83.8	86.0	-	-	-	-	88.2	
87	81.6	81.6	-	-	-	-	86.0	
93	77.2	79.4	-	-	-	-	81.6	
99	70.5	77.2	-	-	-	-	77.2	
111	57.3	70.5	-	-	-	-	70.5	
123	48.5	66.1	66.1	-	-	-	66.1	
135	41.9	61.7	61.7	-	-	-	61.7	
147	33.1	57.3	57.3	-	-	-	57.3	
159	28.7	52.9	52.9	-	-	-	52.9	
171	24.3	46.3	50.7	-	-	-	50.7	
183	19.8	41.9	48.5	-	-	-	48.5	
195	15.4	37.5	46.3	46.3	-	-	46.3	
207	13.2	33.1	44.1	44.1	-	-	44.1	
219	11.0	28.7	41.9	41.9	-	-	41.9	
231	8.8	24.3	39.7	41.9	-	-	41.9	
243	-	22.0	37.5	39.7	-	-	39.7	
255	-	19.8	35.3	39.7	-	-	39.7	
267	-	17.6	30.9	37.5	-	-	37.5	
279	-	15.4	28.7	35.3	37.5	-	37.5	
291	-	13.2	26.5	35.3	35.3	-	35.3	
303	-	11.0	24.3	33.1	35.3	-	35.3	

SSL/
LSL

Main boom: 334.5 ft SL-Radius 44.3 ft

264,500 lb¹⁾ 23.8 ft 360°

Radius lb	0	88,2	176,4	264,6	352,7	396,8	440,9	
ft	1,000 lb							
39	125.7	-	-	-	-	-	136.7	
45	125.7	-	-	-	-	-	136.7	
51	125.7	-	-	-	-	-	136.7	
57	125.7	125.7	-	-	-	-	136.7	
63	125.7	125.7	-	-	-	-	136.7	
69	121.3	125.7	-	-	-	-	134.5	
75	110.2	125.7	-	-	-	-	134.5	
81	99.2	125.7	-	-	-	-	132.3	
87	88.2	125.7	125.7	-	-	-	132.3	
93	79.4	123.5	125.7	-	-	-	130.1	
99	72.8	112.4	125.7	-	-	-	130.1	
111	59.5	94.8	123.5	-	-	-	127.9	
123	50.7	81.6	112.4	121.3	-	-	123.5	
135	41.9	70.5	99.2	119.0	-	-	121.3	
147	35.3	61.7	88.2	112.4	-	-	116.8	
159	30.9	55.1	79.4	103.6	110.2	-	110.2	
171	26.5	48.5	70.5	92.6	105.8	-	105.8	
183	22.0	44.1	63.9	83.8	101.4	101.4	101.4	
195	17.6	37.5	57.3	77.2	94.8	94.8	94.8	
207	15.4	33.1	52.9	70.5	88.2	90.4	90.4	
219	11.0	30.9	48.5	63.9	81.6	83.8	83.8	
231	8.8	26.5	44.1	59.5	75.0	77.2	77.2	
243	-	24.3	39.7	55.1	70.5	72.8	72.8	
255	-	22.0	35.3	50.7	66.1	66.1	66.1	
267	-	17.6	33.1	48.5	61.7	61.7	61.7	
279	-	15.4	30.9	44.1	57.3	57.3	57.3	
291	-	15.4	28.7	41.9	52.9	52.9	52.9	

SSL/
LSL

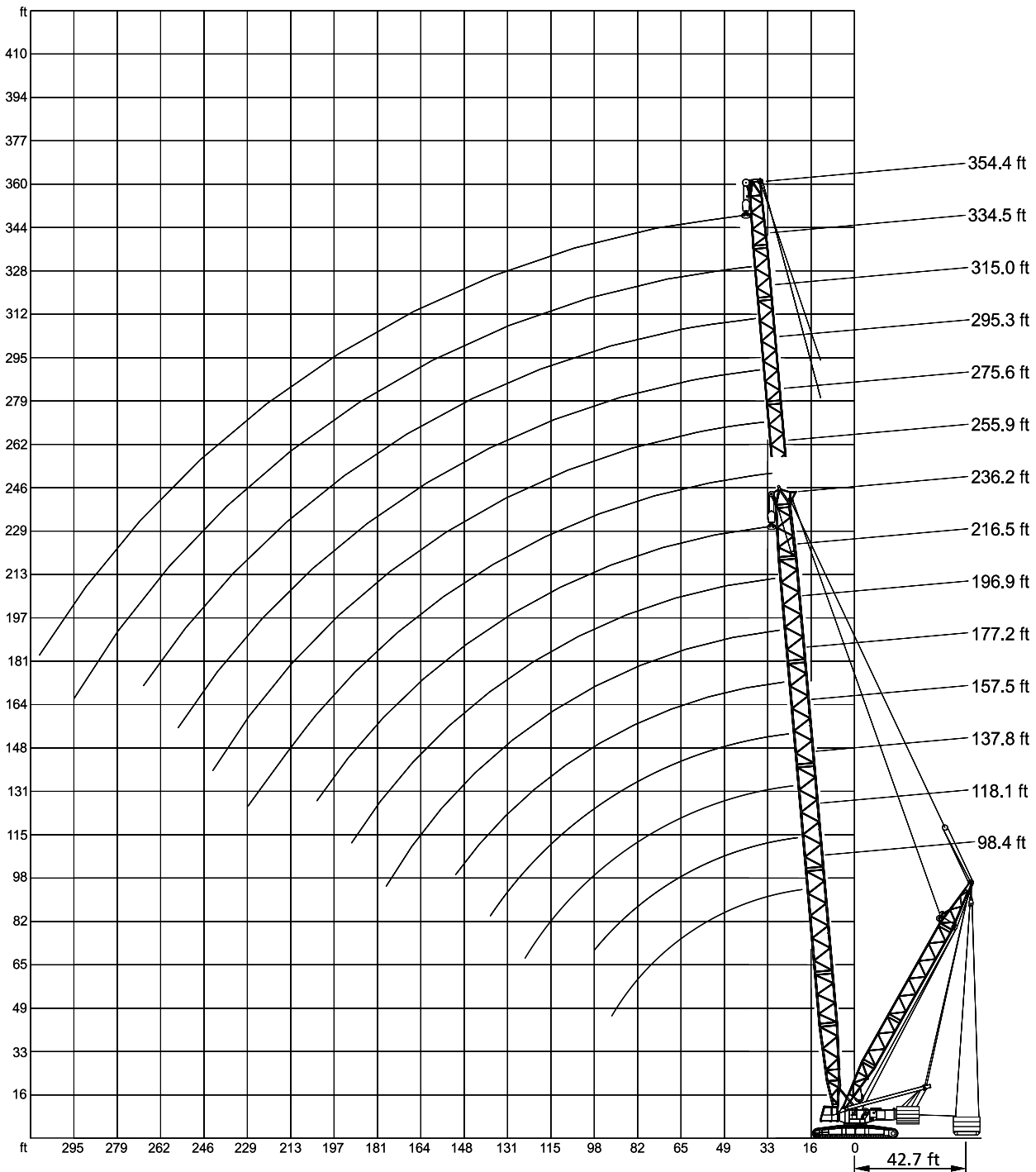
Remarks

1) with 66,100 lb central ballast

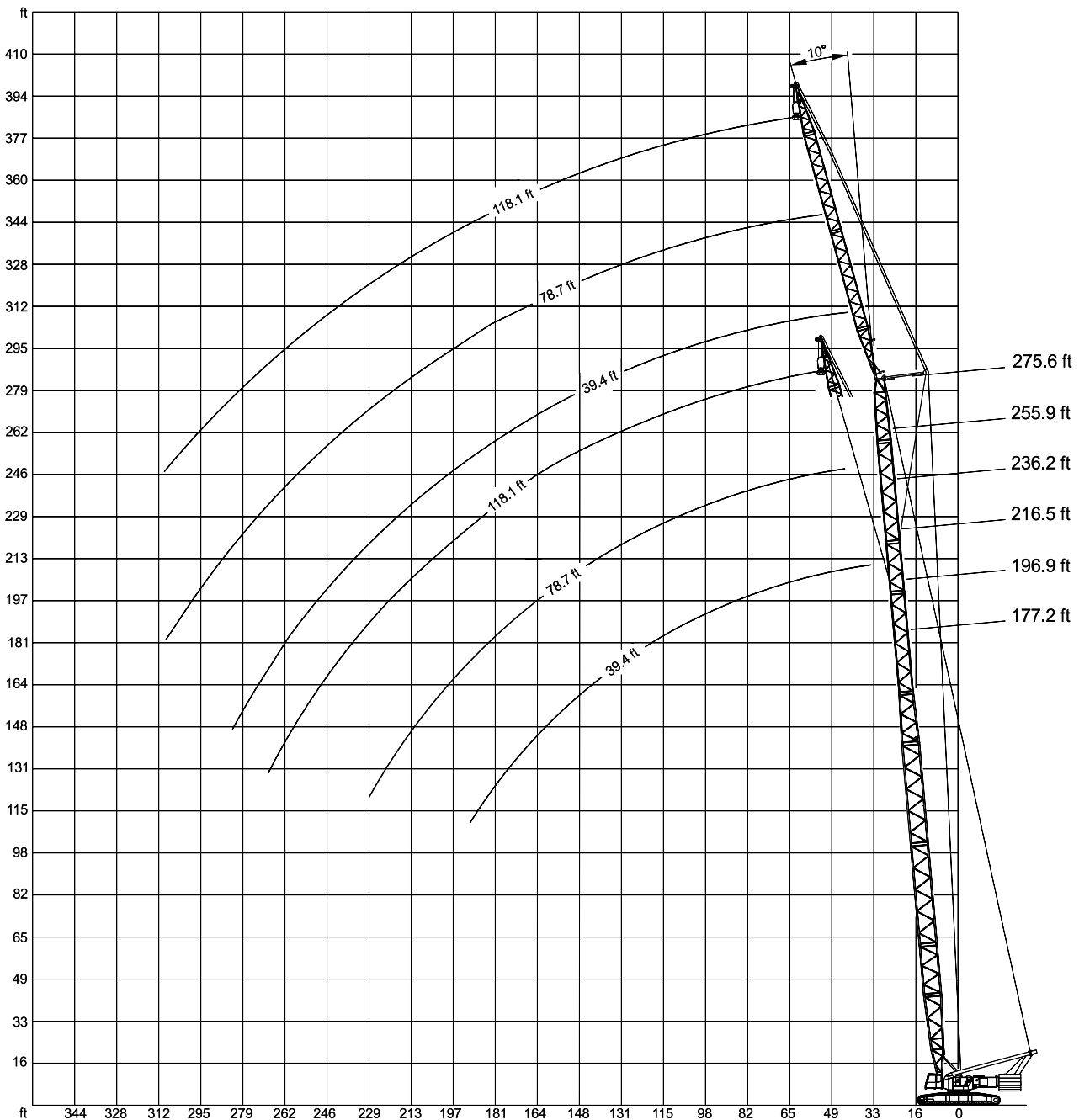


Working ranges main boom with Superlift

SSL, SSL/LSL



Working ranges fixed fly jib 10°

LF*

Lifting capacities fixed fly jib

Main boom: 177.2 ft

264,500 lb¹⁾  **23.8 ft**

		Fly jib											
		39.4 ft				78.7 ft				118.1 ft			
Radius		10°		30°		10°		30°		10°		30°	
		0° ²⁾	360°	0° ²⁾	360°	0° ²⁾	360°	0° ²⁾	360°	0° ²⁾	360°	0° ²⁾	360°
ft		1,000 lb											
39	LF*	132.3	132.3	-	-	-	-	-	-	-	-	-	-
45		132.3	132.3	-	-	-	-	-	-	-	-	-	-
51		132.3	132.3	-	-	-	-	-	-	-	-	-	-
57		130.5	130.5	70.5	70.5	70.5	70.5	-	-	-	-	-	-
63		125.9	125.9	68.3	68.3	70.5	70.5	-	-	-	-	-	-
69		120.2	120.2	65.7	65.7	70.5	70.5	-	-	39.7	39.7	-	-
75		114.4	112.9	63.1	63.1	69.2	69.2	-	-	39.7	39.7	-	-
81		109.1	103.8	60.8	60.8	66.8	66.8	37.0	37.0	39.0	39.0	-	-
87		104.1	94.1	58.9	58.9	64.2	64.2	35.7	35.7	37.7	37.7	-	-
93		98.8	86.0	56.9	56.9	61.5	61.5	34.4	34.4	36.4	36.4	-	-
99		91.9	78.5	55.1	55.1	59.1	59.1	33.1	33.1	35.3	35.3	21.6	21.6
111		78.7	67.0	52.0	52.0	54.7	54.7	30.9	30.9	33.1	33.1	20.5	20.5
123		67.9	58.0	49.4	49.4	50.5	50.5	28.9	28.9	31.1	31.1	19.2	19.2
135		59.7	50.7	47.2	47.2	46.3	46.3	27.3	27.3	29.3	29.3	18.3	18.3
147		52.7	44.5	45.4	44.5	42.3	42.3	25.8	25.8	27.8	27.8	17.4	17.4
159		46.7	39.5	43.9	40.3	39.0	39.0	24.5	24.5	26.5	26.5	16.5	16.5
171		42.1	35.3	-	-	36.4	36.2	23.4	23.4	25.1	25.1	15.7	15.7
183		37.9	31.7	-	-	34.0	33.1	22.5	22.5	24.0	24.0	14.8	14.8
195		-	-	-	-	31.7	29.8	21.6	21.6	22.5	22.5	14.1	14.1
207		-	-	-	-	30.0	26.9	-	-	20.9	20.9	13.4	13.4
219		-	-	-	-	28.4	24.3	-	-	19.6	19.6	12.8	12.8
231		-	-	-	-	-	-	-	-	18.5	18.5	12.3	12.3
243		-	-	-	-	-	-	-	-	17.4	17.4	11.9	11.9
255		-	-	-	-	-	-	-	-	16.5	16.5	-	-
267		-	-	-	-	-	-	-	-	15.7	15.7	-	-

Main boom: 196.9 ft

		1,000 lb											
51		132.3	132.3	-	-	-	-	-	-	-	-	-	-
57		129.4	129.4	70.5	70.5	70.5	70.5	-	-	-	-	-	-
63		124.6	124.6	69.7	69.7	70.5	70.5	-	-	-	-	-	-
69		118.8	118.8	67.2	67.2	70.3	70.3	-	-	39.7	39.7	-	-
75		113.1	111.6	64.8	64.8	68.8	68.8	-	-	39.7	39.7	-	-
81		108.0	102.5	62.6	62.6	66.1	66.1	37.0	37.0	39.2	39.2	-	-
87		103.0	92.8	60.6	60.6	63.7	63.7	36.2	36.2	37.9	37.9	-	-
93		97.9	84.7	58.6	58.6	61.3	61.3	35.3	35.3	36.6	36.6	-	-
99		90.6	77.2	56.9	56.9	58.9	58.9	34.2	34.2	35.3	35.3	21.6	21.6
111		77.4	65.7	53.8	53.8	54.7	54.7	31.7	31.7	33.1	33.1	20.5	20.5
123		66.6	56.4	51.1	51.1	50.7	50.7	30.0	30.0	31.1	31.1	19.4	19.4
135		58.2	49.4	48.9	48.9	47.4	47.4	28.2	28.2	29.3	29.3	18.5	18.5
147		51.4	43.2	47.0	44.1	44.1	44.1	26.7	26.7	27.8	27.8	17.6	17.6
159		45.4	38.1	45.0	39.0	41.2	39.9	25.4	25.4	26.5	26.5	16.8	16.8
171		40.6	34.0	41.4	34.6	38.8	35.5	24.3	24.3	25.1	25.1	16.1	16.1
183		36.4	30.2	-	-	36.4	31.7	23.4	23.4	24.0	24.0	15.4	15.4
195		32.8	26.9	-	-	34.2	28.4	22.5	22.5	23.1	23.1	14.6	14.6
207		-	-	-	-	31.1	25.6	21.6	21.6	22.3	22.3	13.9	13.9
219		-	-	-	-	28.2	22.7	-	-	20.9	20.9	13.2	13.2
231		-	-	-	-	25.6	20.5	-	-	19.8	19.8	12.8	12.8
243		-	-	-	-	-	-	-	-	18.5	18.5	12.3	12.3
255		-	-	-	-	-	-	-	-	17.6	17.0	11.9	11.9
267		-	-	-	-	-	-	-	-	16.8	15.2	-	-
279		-	-	-	-	-	-	-	-	16.1	13.7	-	-

Remarks

* Heavy base length 152.6 ft (type 2420)


¹⁾ with 66,100 lb central ballast

²⁾ over front

When used with add. sheave assembly on boom top, the capacities have to be reduced by 2,200 lb.

Lifting capacities fixed fly jib

Main boom: 216.5 ft

264,500 lb¹⁾  **23.8 ft**

Radius		Fly jib											
		39.4 ft				78.7 ft				118.1 ft			
		10°		30°		10°		30°		10°		30°	
		0° ²⁾	360°	0° ²⁾	360°	0° ²⁾	360°	0° ²⁾	360°	0° ²⁾	360°	0° ²⁾	360°
ft		1,000 lb											
51	121.0	121.0	-	-	-	-	-	-	-	-	-	-	-
57	116.0	116.0	-	-	-	-	-	-	-	-	-	-	-
63	111.6	111.6	69.9	69.9	68.3	68.3	-	-	-	-	-	-	-
69	107.1	107.1	68.1	68.1	65.9	65.9	-	-	-	-	-	-	-
75	102.5	102.5	65.9	65.9	63.5	63.5	-	-	39.2	39.2	-	-	-
81	98.5	98.1	63.9	63.9	61.3	61.3	36.8	36.8	38.1	38.1	-	-	-
87	94.6	91.9	61.9	61.9	59.1	59.1	35.9	35.9	36.8	36.8	-	-	-
93	90.8	83.8	60.2	60.2	57.1	57.1	35.3	35.3	35.7	35.7	-	-	-
99	86.6	76.3	58.2	58.2	54.9	54.9	34.4	34.4	34.4	34.4	-	-	-
111	76.3	64.8	55.3	55.3	51.4	51.4	32.6	32.6	32.4	32.4	-	-	-
123	65.7	55.6	52.5	52.5	48.1	48.1	30.6	30.6	30.4	30.4	19.4	19.4	-
135	57.3	48.3	50.3	48.9	45.0	45.0	28.9	28.9	28.9	28.9	18.5	18.5	-
147	50.3	42.3	48.3	43.4	42.3	42.3	27.6	27.6	27.3	27.3	17.6	17.6	-
159	44.5	37.0	44.8	38.1	39.9	38.6	26.2	26.2	26.0	26.0	17.0	17.0	-
171	39.7	32.8	40.6	33.7	37.7	34.6	24.9	24.9	24.7	24.7	16.3	16.3	-
183	35.5	29.1	36.2	29.8	35.7	30.9	24.0	24.0	23.8	23.8	15.7	15.7	-
195	31.7	25.8	-	-	33.3	27.6	23.1	23.1	22.7	22.7	15.0	15.0	-
207	28.4	22.7	-	-	30.2	24.5	22.3	22.3	22.0	22.0	14.3	14.3	-
219	25.6	20.3	-	-	27.1	21.8	21.6	21.6	21.2	21.2	13.7	13.7	-
231	-	-	-	-	24.5	19.4	-	-	20.5	20.1	13.2	13.2	-
243	-	-	-	-	22.0	17.2	-	-	19.8	17.9	12.6	12.6	-
255	-	-	-	-	19.8	15.4	-	-	18.7	16.1	12.1	12.1	-
267	-	-	-	-	18.1	13.7	-	-	17.9	14.1	11.9	11.9	-
279	-	-	-	-	-	-	-	-	16.5	12.6	-	-	-
291	-	-	-	-	-	-	-	-	15.0	11.2	-	-	-


Main boom: 236.2 ft

ft		1,000 lb											
51	106.9	106.9	-	-	-	-	-	-	-	-	-	-	-
57	103.0	103.0	-	-	-	-	-	-	-	-	-	-	-
63	99.4	99.4	69.4	69.4	62.6	62.6	-	-	-	-	-	-	-
69	95.9	95.9	68.3	68.3	60.4	60.4	-	-	-	-	-	-	-
75	92.4	92.4	66.8	66.8	58.4	58.4	-	-	38.1	38.1	-	-	-
81	89.1	89.1	65.0	65.0	56.4	56.4	-	-	37.0	37.0	-	-	-
87	86.0	86.0	63.1	63.1	54.7	54.7	35.7	35.7	35.9	35.9	-	-	-
93	82.9	82.2	61.3	61.3	52.9	52.9	35.1	35.1	34.6	34.6	-	-	-
99	79.8	75.0	59.5	59.5	51.1	51.1	34.4	34.4	33.5	33.5	-	-	-
111	74.3	63.3	56.7	56.7	48.1	48.1	33.1	33.1	31.7	31.7	-	-	-
123	64.4	54.2	53.8	53.8	45.2	45.2	31.3	31.3	29.8	29.8	19.4	19.4	-
135	56.0	47.0	51.6	48.1	42.8	42.8	29.5	29.5	28.2	28.2	18.5	18.5	-
147	48.9	40.8	48.9	42.1	40.3	40.3	28.2	28.2	26.9	26.9	17.9	17.9	-
159	43.0	35.5	44.1	36.8	38.1	37.3	26.9	26.9	25.6	25.6	17.0	17.0	-
171	38.1	31.1	39.2	32.2	36.4	33.3	25.6	25.6	24.3	24.3	16.3	16.3	-
183	33.7	27.3	34.8	28.2	34.6	29.3	24.7	24.7	23.4	23.4	15.9	15.9	-
195	30.0	23.8	30.9	24.7	32.0	26.0	23.6	23.6	22.5	22.5	15.2	15.2	-
207	26.7	20.9	-	-	28.7	22.9	22.9	22.9	21.6	21.6	14.8	14.8	-
219	23.8	18.3	-	-	25.6	20.1	22.0	21.6	20.9	20.5	14.1	14.1	-
231	21.2	16.1	-	-	22.9	17.9	21.6	19.2	20.3	18.7	13.4	13.4	-
243	-	-	-	-	20.3	15.7	-	-	19.6	16.3	13.0	13.0	-
255	-	-	-	-	18.3	13.7	-	-	19.0	14.6	12.6	12.6	-
267	-	-	-	-	16.3	12.1	-	-	17.0	12.8	12.1	12.1	-
279	-	-	-	-	14.6	10.6	-	-	15.2	11.0	11.9	11.9	-
291	-	-	-	-	-	-	-	-	13.4	9.7	-	-	-
303	-	-	-	-	-	-	-	-	11.9	8.2	-	-	-
315	-	-	-	-	-	-	-	-	10.6	7.1	-	-	-
322	-	-	-	-	-	-	-	-	9.9	6.4	-	-	-

Remarks: See page 20

Lifting capacities fixed fly jib

Main boom: 255.9 ft

264,500 lb¹⁾  **23.8 ft**

Radius		Fly jib											
		39.4 ft				78.7 ft				118.1 ft			
		10°		30°		10°		30°		10°		30°	
		0° ²⁾	360°	0° ²⁾	360°	0° ²⁾	360°	0° ²⁾	360°	0° ²⁾	360°	0° ²⁾	360°
ft		1,000 lb											
	57	90.8	90.8	-	-	-	-	-	-	-	-	-	-
	63	88.0	88.0	68.8	68.8	57.3	57.3	-	-	-	-	-	-
	69	85.3	85.3	67.9	67.9	55.3	55.3	-	-	-	-	-	-
	75	82.5	82.5	66.8	66.8	53.6	53.6	-	-	37.0	37.0	-	-
	81	79.8	79.8	65.7	65.7	51.8	51.8	-	-	35.9	35.9	-	-
	87	77.4	77.4	64.2	64.2	50.3	50.3	35.5	35.5	34.8	34.8	-	-
	93	75.0	75.0	62.4	62.4	48.7	48.7	34.8	34.8	33.7	33.7	-	-
	99	72.5	72.3	60.6	60.6	47.2	47.2	34.4	34.4	32.6	32.6	-	-
	111	68.1	62.6	57.8	57.8	44.5	44.5	33.3	33.3	30.9	30.9	-	-
	123	62.8	53.4	55.1	54.2	42.1	42.1	31.7	31.7	29.1	29.1	19.4	19.4
	135	55.1	46.1	52.7	47.6	39.9	39.9	30.2	30.2	27.6	27.6	18.5	18.5
	147	48.1	39.9	48.7	41.2	37.9	37.9	28.9	28.9	26.2	26.2	17.9	17.9
LF*	159	42.1	34.6	43.4	35.9	36.2	35.7	27.6	27.6	24.9	24.9	17.2	17.2
	171	37.3	30.2	38.4	31.5	34.4	32.6	26.2	26.2	23.8	23.8	16.5	16.5
	183	32.8	26.2	34.0	27.3	32.8	28.4	25.1	25.1	22.9	22.9	15.9	15.9
	195	29.1	22.9	30.0	23.8	31.1	25.1	24.3	24.3	22.0	22.0	15.4	15.4
	207	25.6	19.8	26.5	20.7	27.8	22.0	23.4	23.1	21.2	21.2	15.0	15.0
	219	22.7	17.4	-	-	24.7	19.2	22.7	20.9	20.5	20.1	14.6	14.6
	231	20.1	15.0	-	-	21.8	16.8	22.0	18.3	19.8	17.9	13.9	13.9
	243	17.9	13.0	-	-	19.4	14.8	20.7	16.1	19.2	15.4	13.4	13.4
	255	15.9	11.2	-	-	17.4	12.8	18.5	13.9	18.1	13.7	13.0	13.0
	267	-	-	-	-	15.4	11.0	-	-	16.1	11.9	12.6	12.6
	279	-	-	-	-	13.7	9.5	-	-	14.3	10.1	12.1	11.7
	291	-	-	-	-	12.1	8.2	-	-	12.6	8.8	11.9	10.1
	303	-	-	-	-	-	-	-	-	11.0	7.3	-	-
	315	-	-	-	-	-	-	-	-	9.7	6.2	-	-
	322	-	-	-	-	-	-	-	-	9.0	5.5	-	-

Main boom: 275.6 ft

ft		1,000 lb											
	57	83.3	83.3	-	-	-	-	-	-	-	-	-	-
	63	81.1	81.1	-	-	-	-	-	-	-	-	-	-
	69	78.9	78.9	67.2	67.2	50.5	50.5	-	-	-	-	-	-
	75	76.5	76.5	66.4	66.4	48.9	48.9	-	-	-	-	-	-
	81	74.5	74.5	65.5	65.5	47.4	47.4	-	-	34.6	34.6	-	-
	87	72.3	72.3	64.6	64.6	46.1	46.1	35.1	35.1	33.7	33.7	-	-
	93	70.3	70.3	63.3	63.3	44.8	44.8	34.6	34.6	32.6	32.6	-	-
	99	68.3	68.1	61.7	61.7	43.4	43.4	34.0	34.0	31.7	31.7	-	-
	111	64.4	60.8	58.9	58.9	41.2	41.2	33.3	33.3	30.0	30.0	-	-
	123	60.8	51.8	56.2	53.4	39.0	39.0	32.4	32.4	28.2	28.2	19.4	19.4
	135	53.6	44.5	53.8	46.3	37.3	37.3	30.9	30.9	26.9	26.9	18.5	18.5
	147	46.5	38.4	48.1	39.9	35.5	35.5	29.3	29.3	25.6	25.6	17.9	17.9
LF*	159	40.8	32.8	42.1	34.4	34.0	34.0	28.0	28.0	24.5	24.5	17.2	17.2
	171	35.7	28.4	37.0	29.8	32.6	30.9	26.9	26.9	23.4	23.4	16.5	16.5
	183	31.1	24.5	32.4	25.6	31.3	26.9	25.8	25.8	22.5	22.5	16.1	16.1
	195	27.3	21.2	28.4	22.3	29.5	23.4	24.9	24.5	21.6	21.6	15.4	15.4
	207	23.8	18.1	24.7	19.0	26.2	20.3	24.0	22.5	20.9	20.7	15.0	15.0
	219	20.9	15.4	21.6	16.3	22.9	17.6	23.1	19.4	20.3	18.7	14.6	14.6
	231	18.3	13.2	-	-	20.3	15.2	22.0	17.0	19.6	16.3	14.3	14.3
	243	15.9	11.2	-	-	17.9	13.0	19.4	14.6	19.0	14.1	13.7	13.7
	255	13.9	9.5	-	-	15.7	11.2	17.0	12.6	16.8	12.1	13.2	13.2
	267	12.1	7.7	-	-	13.7	9.5	15.0	10.6	14.6	10.4	12.8	12.1
	279	10.6	6.4	-	-	11.9	7.9	-	-	12.8	8.6	12.3	10.6
	291	-	-	-	-	10.4	6.4	-	-	11.0	7.3	12.1	8.8
	303	-	-	-	-	8.8	5.1	-	-	9.5	5.7	11.0	7.3
	315	-	-	-	-	-	-	-	-	8.2	-	-	-
	322	-	-	-	-	-	-	-	-	7.5	-	-	-

Remarks: See page 20

Notes to lifting capacity

Lifting capacities do not exceed 75% of tipping load.

Weight of hook blocks and slings is part of the load, and is to be deducted from the capacity ratings.

Crane operation is permissible up to a

wind pressure of 1.25 lb/ft²

wind speed of 32 ft/s

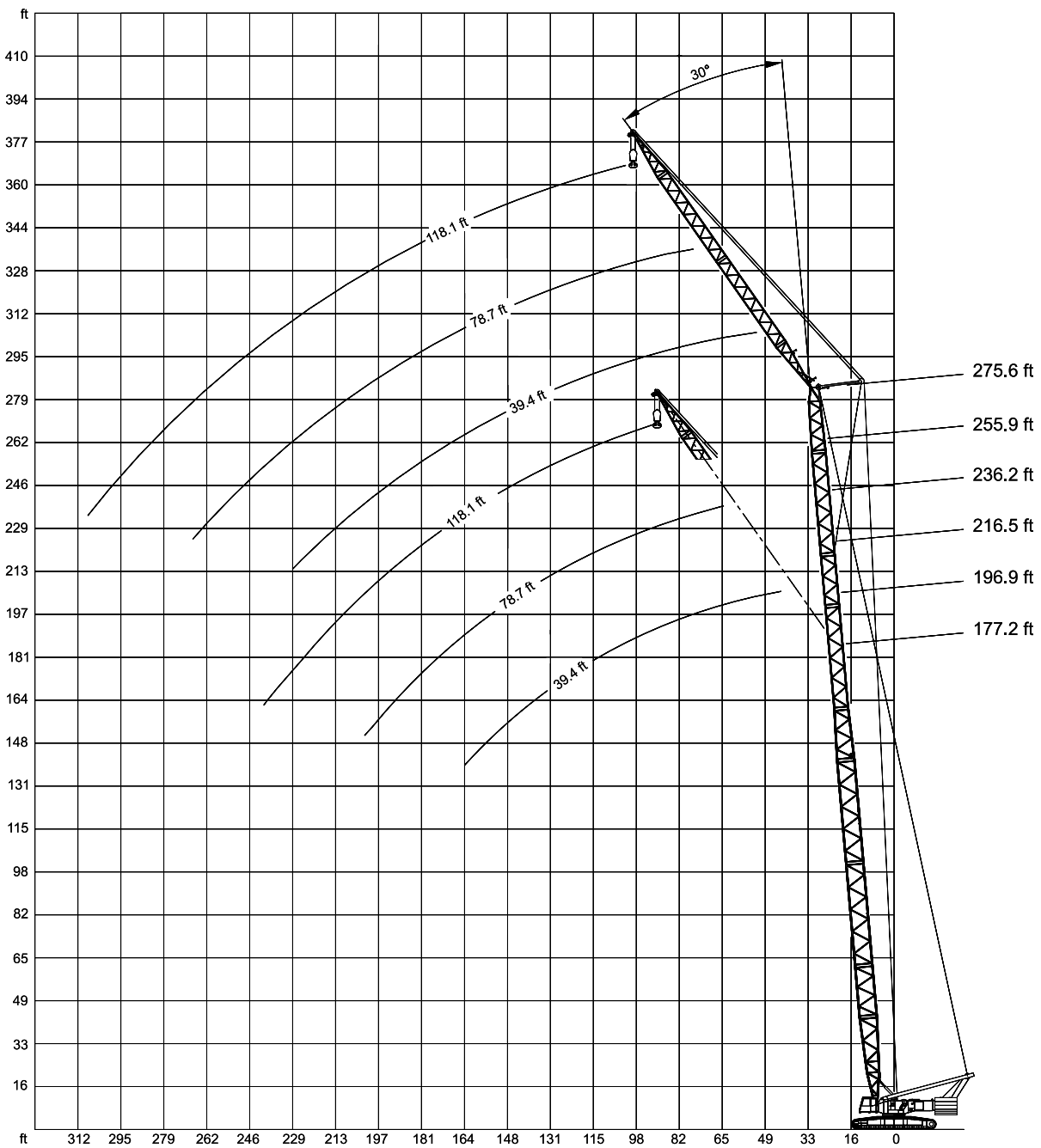
Consult operation manual for further details.

Note: Data published herein is intended as a guide only and shall not be construed to warrant applicability for lifting purposes. Crane operation is subject to the computer charts and operation manual both supplied with the crane.



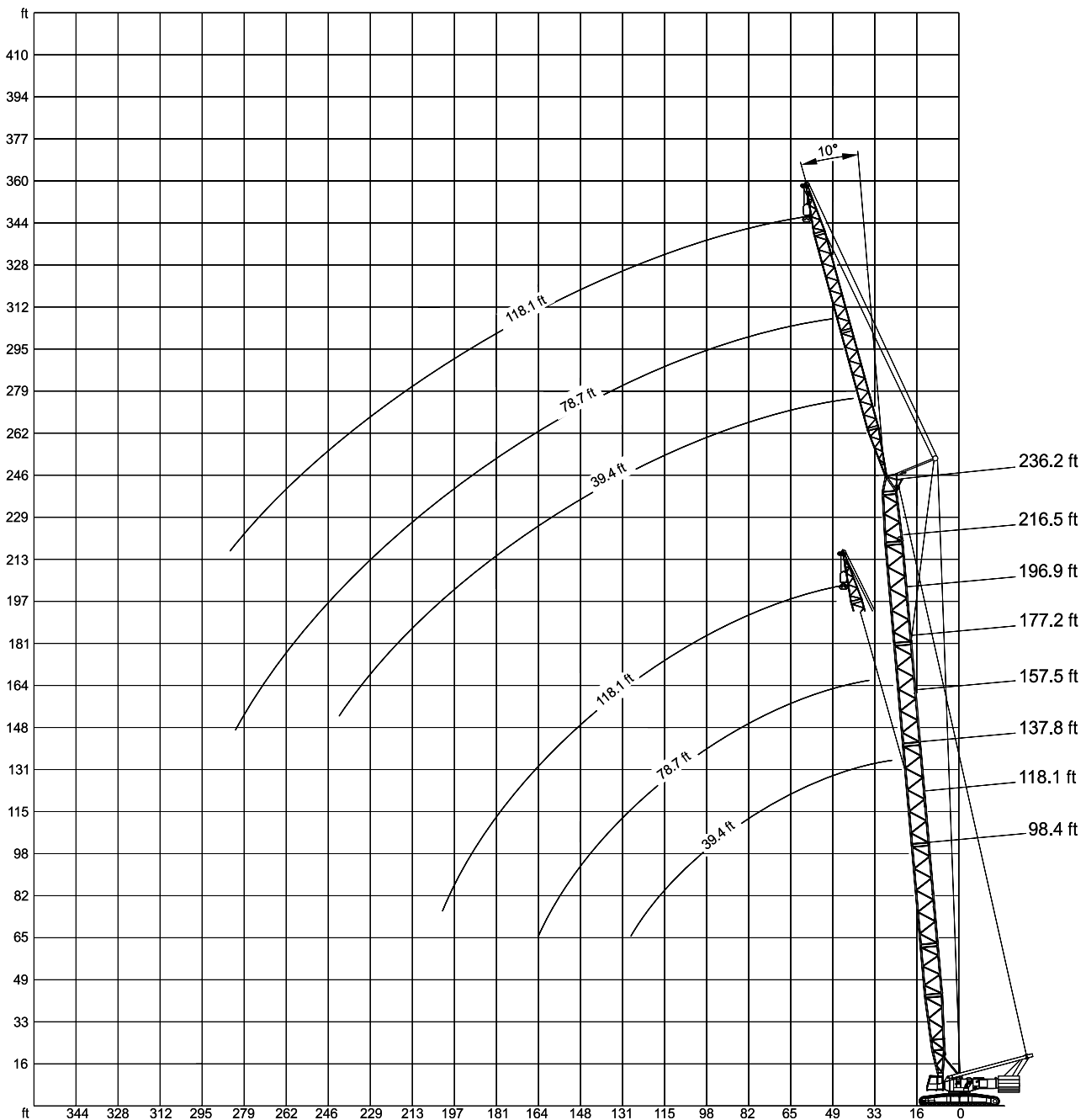
Working ranges fixed fly jib 30°

LF*



Working ranges fixed fly jib 10°

LF



Lifting capacities fixed fly jib

Main boom: 98.4 ft

264,500 lb¹⁾  **23.8 ft**

Radius	Fly jib											
	39.4 ft				78.7 ft				118.1 ft			
	10°		30°		10°		30°		10°		30°	
	0° ²⁾	360°	0° ²⁾	360°	0° ²⁾	360°	0° ²⁾	360°	0° ²⁾	360°	0° ²⁾	360°
	1,000 lb											
ft												
29	132.3	132.3	-	-	-	-	-	-	-	-	-	-
30	132.3	132.3	-	-	-	-	-	-	-	-	-	-
33	132.3	132.3	-	-	-	-	-	-	-	-	-	-
39	132.3	132.3	-	-	-	-	-	-	-	-	-	-
45	132.3	132.3	-	-	-	-	-	-	-	-	-	-
51	132.3	132.3	69.0	68.3	70.5	70.5	-	-	-	-	-	-
57	123.7	123.7	64.8	64.8	70.5	70.5	-	-	39.7	39.7	-	-
63	112.7	112.7	61.3	61.3	70.5	70.5	-	-	39.7	39.7	-	-
69	103.0	103.0	58.2	58.2	69.2	69.2	38.6	38.6	39.7	39.7	-	-
75	94.1	94.1	55.3	55.3	65.0	65.0	36.2	36.2	39.7	39.7	-	-
81	87.3	87.3	52.9	52.9	59.7	59.7	34.2	34.2	39.7	39.7	-	-
87	81.4	81.4	50.7	50.7	55.3	55.3	32.4	32.4	39.7	39.7	-	-
93	76.1	76.1	48.9	48.9	51.4	51.4	30.9	30.9	39.5	39.5	22.3	22.3
99	71.4	71.4	47.2	47.2	47.6	47.6	29.3	29.3	38.1	38.1	21.4	21.4
111	64.2	64.2	44.5	44.5	42.1	42.1	26.9	26.9	33.3	33.3	19.8	19.8
123	58.2	58.2	-	-	37.7	37.7	24.9	24.9	29.3	29.3	18.1	18.1
135	-	-	-	-	34.2	34.2	23.4	23.4	26.2	26.2	16.5	16.5
147	-	-	-	-	31.1	31.1	22.0	22.0	23.6	23.6	15.2	15.2
159	-	-	-	-	28.7	28.7	-	-	21.4	21.4	14.1	14.1
171	-	-	-	-	-	-	-	-	19.4	19.4	13.2	13.2
183	-	-	-	-	-	-	-	-	17.9	17.9	12.6	12.6
195	-	-	-	-	-	-	-	-	16.5	16.5	-	-

Main boom: 118.1 ft

Radius	1,000 lb											
	ft											
33	132.3	132.3	-	-	-	-	-	-	-	-	-	-
39	132.3	132.3	-	-	-	-	-	-	-	-	-	-
45	132.3	132.3	-	-	-	-	-	-	-	-	-	-
51	132.3	132.3	70.5	70.5	70.5	70.5	-	-	-	-	-	-
57	132.1	132.1	67.0	66.1	70.5	70.5	-	-	-	-	-	-
63	124.3	124.3	63.7	63.7	70.5	70.5	-	-	39.7	39.7	-	-
69	114.0	114.0	60.6	60.6	70.5	70.5	39.5	39.5	39.7	39.7	-	-
75	104.7	104.7	58.0	58.0	69.0	69.0	37.3	37.3	39.7	39.7	-	-
81	97.0	97.0	55.6	55.6	65.0	65.0	35.3	35.3	39.7	39.7	-	-
87	90.6	90.6	53.4	53.4	60.2	60.2	33.7	33.7	39.7	39.7	-	-
93	84.9	84.9	51.4	51.4	56.0	56.0	32.2	32.2	39.7	39.7	22.3	22.3
99	79.6	79.1	49.6	49.6	52.2	52.2	30.6	30.6	39.5	39.5	21.6	21.6
111	71.4	67.7	46.7	46.7	46.3	46.3	28.2	28.2	35.9	35.9	20.1	20.1
123	64.8	58.6	44.5	44.5	41.2	41.2	26.2	26.2	31.7	31.7	18.7	18.7
135	59.5	51.6	-	-	37.5	37.5	24.5	24.5	28.4	28.4	17.4	17.4
147	-	-	-	-	34.2	34.2	23.1	23.1	25.6	25.6	16.1	16.1
159	-	-	-	-	31.5	31.5	22.0	22.0	23.4	23.4	15.0	15.0
171	-	-	-	-	29.3	29.3	-	-	21.4	21.4	13.9	13.9
183	-	-	-	-	-	-	-	-	19.6	19.6	13.2	13.2
195	-	-	-	-	-	-	-	-	18.3	18.3	12.6	12.6
207	-	-	-	-	-	-	-	-	17.0	17.0	-	-

Remarks


¹⁾ with 66,100 lb central ballast

²⁾ over front (between idler wheels)

When used with add. sheave assembly on boom top, the capacities have to be reduced by 2,200 lb.

Lifting capacities fixed fly jib

Main boom: 137.8 ft

264,500 lb¹⁾  23.8 ft

Radius	Fly jib											
	39.4 ft				78.7 ft				118.1 ft			
	10°		30°		10°		30°		10°		30°	
	0° ²⁾	360°	0° ²⁾	360°	0° ²⁾	360°	0° ²⁾	360°	0° ²⁾	360°	0° ²⁾	360°
	1,000 lb											
ft												
39	132.3	132.3	-	-	-	-	-	-	-	-	-	-
45	132.3	132.3	-	-	-	-	-	-	-	-	-	-
51	132.3	132.3	72.8	72.8	70.5	70.5	-	-	-	-	-	-
57	132.3	132.3	69.0	68.3	70.5	70.5	-	-	-	-	-	-
63	131.0	131.0	65.7	65.7	70.5	70.5	-	-	39.7	39.7	-	-
69	124.6	124.6	62.8	62.8	70.5	70.5	-	-	39.7	39.7	-	-
75	114.4	113.3	60.2	60.2	70.5	70.5	38.1	38.1	39.7	39.7	-	-
81	106.5	103.0	57.8	57.8	69.0	69.0	36.4	36.4	39.7	39.7	-	-
87	99.4	93.3	55.6	55.6	65.0	65.0	34.6	34.6	39.7	39.7	-	-
93	93.3	85.1	53.6	53.6	60.6	60.6	33.1	33.1	39.7	39.7	22.5	22.5
99	87.5	77.6	51.8	51.8	56.4	56.4	31.7	31.7	39.7	39.7	21.6	21.6
111	77.6	66.1	48.9	48.9	50.0	50.0	29.3	29.3	38.4	38.4	20.3	20.3
123	67.2	57.1	46.3	46.3	45.0	45.0	27.3	27.3	34.2	34.2	19.0	19.0
135	58.9	50.0	44.3	44.3	40.8	40.8	25.6	25.6	30.6	30.6	17.9	17.9
147	51.8	43.9	-	-	37.3	37.3	24.3	24.3	27.8	27.8	16.8	16.8
159	46.1	38.8	-	-	34.2	34.2	22.9	22.9	25.1	25.1	15.7	15.7
171	-	-	-	-	31.7	31.7	22.0	22.0	23.1	23.1	14.6	14.6
183	-	-	-	-	29.8	29.8	-	-	21.4	21.4	13.7	13.7
195	-	-	-	-	-	-	-	-	19.8	19.8	13.0	13.0
207	-	-	-	-	-	-	-	-	18.3	18.3	12.3	12.3
219	-	-	-	-	-	-	-	-	17.2	17.2	-	-

Main boom: 157.5 ft

Radius	1,000 lb											
	ft											
39	132.3	132.3	-	-	-	-	-	-	-	-	-	-
45	132.3	132.3	-	-	-	-	-	-	-	-	-	-
51	132.3	132.3	-	-	-	-	-	-	-	-	-	-
57	132.3	132.3	70.5	70.5	70.5	70.5	-	-	-	-	-	-
63	132.3	132.3	67.5	66.1	70.5	70.5	-	-	39.7	39.7	-	-
69	130.3	125.7	64.6	64.6	70.5	70.5	-	-	39.7	39.7	-	-
75	123.9	112.9	61.9	61.9	70.5	70.5	38.4	38.4	39.7	39.7	-	-
81	115.3	101.4	59.7	59.7	70.5	70.5	37.0	37.0	39.7	39.7	-	-
87	107.1	91.7	57.5	57.5	69.2	69.2	35.5	35.5	39.7	39.7	-	-
93	98.1	83.3	55.6	55.6	65.0	65.0	34.0	34.0	39.7	39.7	-	-
99	89.5	76.1	53.8	53.8	60.6	60.6	32.6	32.6	39.7	39.7	21.6	21.6
111	76.1	64.6	50.7	50.7	54.0	54.0	30.4	30.4	39.7	39.7	20.3	20.3
123	65.5	55.3	48.1	48.1	48.5	48.5	28.4	28.4	36.4	36.4	19.2	19.2
135	57.1	48.3	46.1	46.1	44.1	44.1	26.7	26.7	32.8	32.8	18.1	18.1
147	50.0	42.1	44.3	42.3	40.1	40.1	25.1	25.1	29.8	29.8	17.2	17.2
159	44.3	37.0	-	-	37.0	37.0	23.8	23.8	27.1	27.1	16.1	16.1
171	39.5	32.8	-	-	34.4	34.2	22.7	22.7	24.9	24.9	15.2	15.2
183	-	-	-	-	32.0	31.1	21.8	21.8	22.9	22.9	14.3	14.3
195	-	-	-	-	30.0	27.8	-	-	21.2	21.2	13.7	13.7
207	-	-	-	-	-	-	-	-	19.8	19.8	13.0	13.0
219	-	-	-	-	-	-	-	-	18.5	18.5	12.3	12.3
231	-	-	-	-	-	-	-	-	17.4	17.4	-	-
243	-	-	-	-	-	-	-	-	16.5	16.5	-	-
255	-	-	-	-	-	-	-	-	15.7	15.7	-	-

Remarks


¹⁾ with 66,100 lb central ballast

²⁾ over front (between idler wheels)

When used with add. sheave assembly on boom top, the capacities have to be reduced by 2,200 lb.

Lifting capacities fixed fly jib

Main boom: 177.2 ft

264,500 lb¹⁾  **23.8 ft**


Radius	Fly jib											
	39.4 ft				78.7 ft				118.1 ft			
	10°		30°		10°		30°		10°		30°	
	0° ²⁾	360°	0° ²⁾	360°	0° ²⁾	360°	0° ²⁾	360°	0° ²⁾	360°	0° ²⁾	360°
	1,000 lb											
ft												
39	132.3	132.3	-	-	-	-	-	-	-	-	-	-
45	132.3	132.3	-	-	-	-	-	-	-	-	-	-
51	132.3	132.3	-	-	-	-	-	-	-	-	-	-
57	132.3	132.3	70.5	70.5	70.5	70.5	-	-	-	-	-	-
63	132.3	132.3	69.0	68.3	70.5	70.5	-	-	-	-	-	-
69	132.3	125.0	66.1	66.1	70.5	70.5	-	-	39.7	39.7	-	-
75	127.9	111.3	63.7	63.7	70.5	70.5	-	-	39.7	39.7	-	-
81	117.9	99.9	61.3	61.3	70.5	70.5	37.3	37.3	39.7	39.7	-	-
87	106.5	90.2	59.3	59.3	70.3	70.3	36.2	36.2	39.7	39.7	-	-
93	96.8	82.0	57.3	57.3	69.2	69.2	34.8	34.8	39.7	39.7	-	-
99	88.0	74.5	55.6	55.6	64.8	64.8	33.5	33.5	39.7	39.7	21.6	21.6
111	74.5	63.1	52.5	52.5	57.5	57.5	31.3	31.3	39.7	39.7	20.5	20.5
123	63.9	53.8	49.8	49.8	51.8	51.8	29.3	29.3	38.4	38.4	19.2	19.2
135	55.6	46.7	47.6	47.2	47.2	47.2	27.6	27.6	34.8	34.8	18.3	18.3
147	48.5	40.6	45.6	41.7	43.0	42.5	26.0	26.0	31.7	31.7	17.4	17.4
159	42.8	35.5	42.8	36.4	39.7	37.7	24.7	24.7	28.9	28.9	16.5	16.5
171	37.9	31.1	-	-	36.8	33.5	23.6	23.6	26.5	26.5	15.9	15.9
183	33.7	27.1	-	-	34.4	29.5	22.7	22.7	24.5	24.5	15.0	15.0
195	-	-	-	-	32.0	26.0	21.8	21.8	22.7	22.7	14.1	14.1
207	-	-	-	-	28.7	22.9	-	-	21.2	21.2	13.4	13.4
219	-	-	-	-	25.6	20.3	-	-	19.8	19.8	12.8	12.8
231	-	-	-	-	-	-	-	-	18.7	18.5	12.3	12.3
243	-	-	-	-	-	-	-	-	17.6	17.0	11.9	11.9
255	-	-	-	-	-	-	-	-	16.8	15.0	-	-
267	-	-	-	-	-	-	-	-	-	13.2	-	-

Main boom: 196.9 ft

Radius	1,000 lb											
	ft											
45	132.3	132.3	-	-	-	-	-	-	-	-	-	-
51	132.3	132.3	-	-	-	-	-	-	-	-	-	-
57	132.3	132.3	70.5	70.5	70.5	70.5	-	-	-	-	-	-
63	132.3	132.3	69.9	68.3	70.5	70.5	-	-	-	-	-	-
69	132.3	124.1	67.5	66.1	70.5	70.5	-	-	39.7	39.7	-	-
75	127.2	109.8	65.0	65.0	70.5	70.5	-	-	39.7	39.7	-	-
81	116.4	98.3	62.8	62.8	70.5	70.5	37.0	37.0	39.7	39.7	-	-
87	104.9	88.6	60.8	60.8	70.5	70.5	36.2	36.2	39.7	39.7	-	-
93	95.2	80.5	58.9	58.9	70.3	70.3	35.3	35.3	39.7	39.7	-	-
99	86.4	73.0	57.1	57.1	68.6	68.6	34.2	34.2	39.7	39.7	21.6	21.6
111	73.0	61.5	54.0	54.0	61.1	61.1	32.0	32.0	39.7	39.7	20.5	20.5
123	62.4	52.2	51.4	51.4	55.1	54.7	30.0	30.0	39.7	39.7	19.4	19.4
135	54.0	45.0	49.2	46.1	50.3	47.6	28.4	28.4	36.8	36.8	18.5	18.5
147	47.0	38.8	46.7	40.1	45.9	41.4	26.9	26.9	33.5	33.5	17.6	17.6
159	41.0	33.5	42.1	34.6	42.3	36.2	25.6	25.6	30.6	30.6	16.8	16.8
171	36.2	28.9	37.0	30.0	38.6	31.7	24.5	24.5	28.2	28.2	16.1	16.1
183	31.5	25.1	-	-	34.2	27.8	23.4	23.4	26.0	26.0	15.4	15.4
195	27.8	21.8	-	-	30.4	24.3	22.5	22.5	24.3	24.3	14.6	14.6
207	24.5	18.7	-	-	26.9	21.2	21.8	21.6	22.5	22.3	13.9	13.9
217	22.3	16.8	-	-	24.5	19.0	21.2	20.3	21.4	20.3	13.4	13.4
219	-	-	-	-	23.8	18.5	-	-	21.2	19.8	13.2	13.2
231	-	-	-	-	21.2	16.1	-	-	19.8	17.4	12.8	12.8
243	-	-	-	-	-	-	-	-	18.7	15.2	12.3	12.3
255	-	-	-	-	-	-	-	-	17.6	13.2	11.9	11.9
267	-	-	-	-	-	-	-	-	15.7	11.5	-	-
279	-	-	-	-	-	-	-	-	13.9	9.9	-	-

Lifting capacities fixed fly jib

Main boom: 216.5 ft

264,500 lb¹⁾  **23.8 ft**

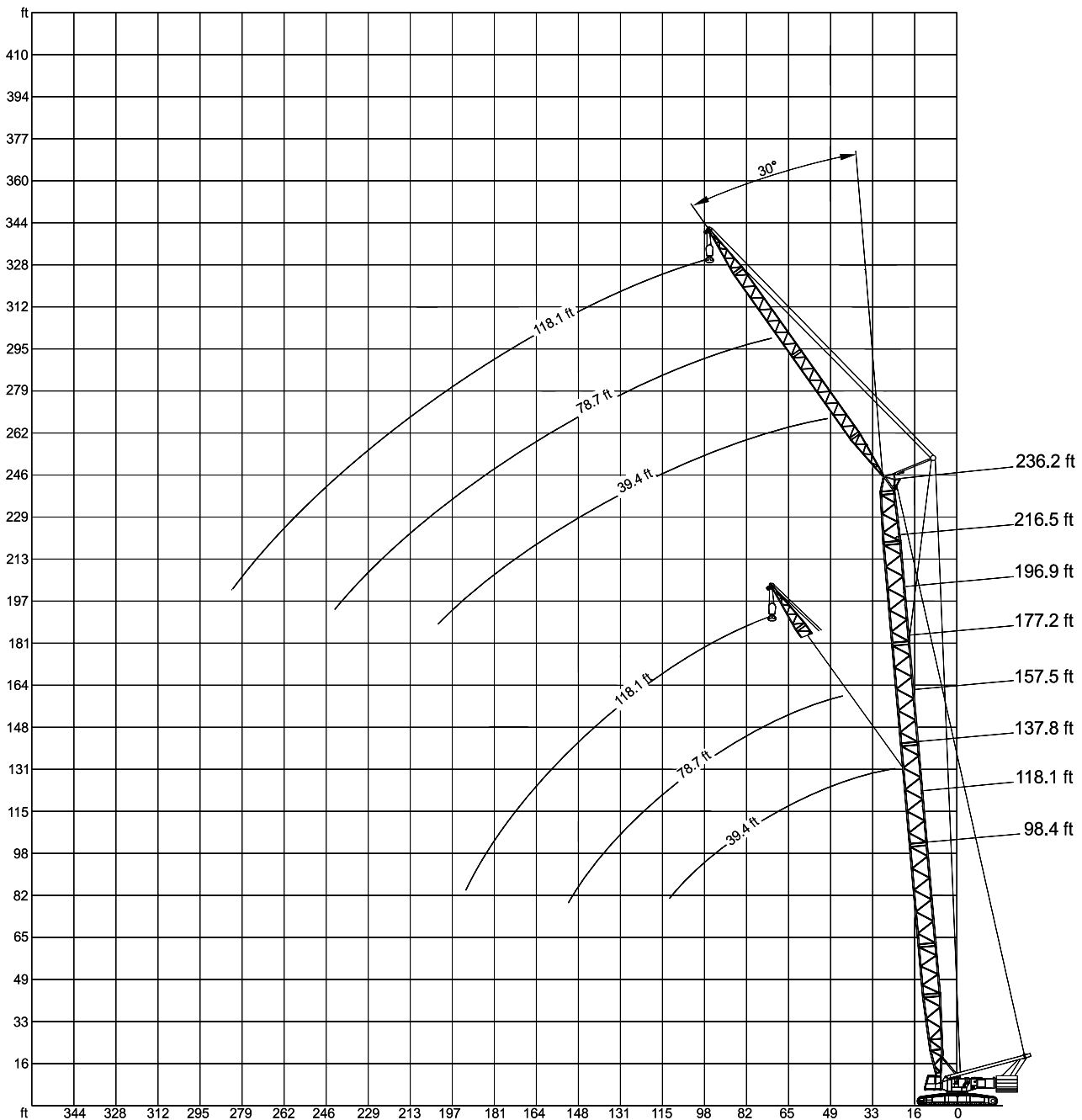
Radius	Fly jib												
	39.4 ft				78.7 ft				118.1 ft				
	10°		30°		10°		30°		10°		30°		
	0° ²⁾	360°	0° ²⁾	360°	0° ²⁾	360°	0° ²⁾	360°	0° ²⁾	360°	0° ²⁾	360°	
	1,000 lb												
ft	45	132.3	132.3	-	-	-	-	-	-	-	-	-	-
	51	132.3	132.3	-	-	-	-	-	-	-	-	-	-
	57	132.3	132.3	-	-	-	-	-	-	-	-	-	-
	63	132.3	132.1	69.9	68.3	70.5	70.5	-	-	-	-	-	-
	69	132.3	123.2	68.3	68.3	70.5	70.5	-	-	39.7	39.7	-	-
	75	126.5	108.5	66.4	66.1	70.5	70.5	-	-	39.7	39.7	-	-
	81	115.1	97.0	64.2	64.2	70.5	70.5	36.8	36.8	39.7	39.7	-	-
	87	103.6	87.3	62.2	62.2	70.5	70.5	35.9	35.9	39.7	39.7	-	-
	93	93.7	78.9	60.4	60.4	70.5	70.5	35.3	35.3	39.7	39.7	-	-
	99	85.1	71.4	58.6	58.6	70.3	70.1	34.4	34.4	39.7	39.7	-	-
	111	71.7	60.0	55.6	55.6	64.6	63.1	32.6	32.6	39.7	39.7	-	-
	123	60.8	50.7	52.7	51.8	58.2	53.8	30.9	30.9	39.7	39.7	19.4	19.4
LF	135	52.5	43.4	50.5	45.2	53.1	46.3	29.1	29.1	38.4	38.4	18.5	18.5
	147	45.4	37.0	46.3	38.6	47.8	40.1	27.6	27.6	35.5	35.5	17.6	17.6
	159	39.5	31.5	40.8	33.1	42.3	34.6	26.2	26.2	32.4	32.4	17.0	17.0
	171	34.4	27.1	35.5	28.4	37.3	30.2	25.1	25.1	29.8	29.8	16.3	16.3
	183	29.8	23.1	30.9	24.3	32.6	26.0	24.0	24.0	27.6	27.1	15.7	15.7
	195	26.0	19.8	-	-	28.7	22.5	23.1	23.1	25.8	24.3	15.0	15.0
	207	22.5	17.0	-	-	25.1	19.4	22.3	21.4	24.0	20.9	14.3	14.3
	219	19.6	14.3	-	-	22.0	16.8	21.6	18.3	22.5	18.3	13.7	13.7
	231	-	-	-	-	19.4	14.3	-	-	20.9	15.9	13.2	13.2
	243	-	-	-	-	17.0	12.1	-	-	18.3	13.4	12.8	12.8
	255	-	-	-	-	14.8	10.4	-	-	16.1	11.7	12.3	12.3
	267	-	-	-	-	12.8	8.6	-	-	14.3	9.7	11.9	11.2
	279	-	-	-	-	-	-	-	-	12.3	8.2	-	-
	291	-	-	-	-	-	-	-	-	10.6	6.6	-	-

Main boom: 236.2 ft

	1,000 lb												
ft	45	132.3	132.3	-	-	-	-	-	-	-	-	-	-
	51	132.3	132.3	-	-	-	-	-	-	-	-	-	-
	57	132.3	132.3	-	-	-	-	-	-	-	-	-	-
	63	132.3	131.2	69.4	68.3	70.5	70.5	-	-	-	-	-	-
	69	132.3	121.7	68.3	68.3	70.5	70.5	-	-	39.7	39.7	-	-
	75	125.9	106.9	67.0	66.1	70.5	70.5	-	-	39.7	39.7	-	-
	81	113.5	95.5	65.3	65.3	70.5	70.5	-	-	39.7	39.7	-	-
	87	102.1	85.5	63.3	63.3	70.5	70.5	35.7	35.7	39.7	39.7	-	-
	93	92.2	77.4	61.5	61.5	70.5	70.5	35.1	35.1	39.7	39.7	-	-
	99	83.6	69.9	59.7	59.7	70.3	70.1	34.4	34.4	39.7	39.7	-	-
	111	69.9	58.2	56.9	56.9	67.7	61.7	33.3	33.3	39.7	39.7	-	-
	123	59.3	48.9	54.0	50.7	61.3	52.2	31.5	31.5	39.7	39.7	19.4	19.4
	135	50.7	41.7	51.4	43.7	53.8	45.0	29.8	29.8	38.8	38.8	18.5	18.5
LF	147	43.7	35.1	45.4	37.0	46.7	38.6	28.2	28.2	36.8	36.8	17.9	17.9
	159	37.5	29.5	39.0	31.3	40.8	33.1	26.9	26.9	34.2	34.0	17.0	17.0
	171	32.2	25.1	33.7	26.5	35.5	28.2	25.8	25.8	31.5	30.2	16.3	16.3
	183	27.8	21.2	29.1	22.3	30.9	24.3	24.7	24.7	29.1	26.0	15.9	15.9
	195	23.8	17.9	24.9	18.7	26.9	20.7	23.8	22.9	27.1	22.5	15.2	15.2
	207	20.5	14.8	-	-	23.4	17.6	22.9	19.8	24.9	19.4	14.8	14.8
	219	17.4	12.1	-	-	20.3	14.8	21.8	16.8	22.0	16.5	14.1	14.1
	231	15.0	9.9	-	-	17.6	12.6	19.2	14.1	19.2	14.1	13.7	13.7
	243	-	-	-	-	15.0	10.4	-	-	16.5	11.9	13.0	13.0
	255	-	-	-	-	13.0	8.4	-	-	14.3	9.9	12.6	12.1
	267	-	-	-	-	11.0	6.6	-	-	12.3	7.9	12.1	10.1
	279	-	-	-	-	9.3	5.1	-	-	10.6	6.4	11.9	8.2
	291	-	-	-	-	-	-	-	-	8.8	-	-	-
	303	-	-	-	-	-	-	-	-	7.3	-	-	-
	315	-	-	-	-	-	-	-	-	6.0	-	-	-
	322	-	-	-	-	-	-	-	-	5.1	-	-	-

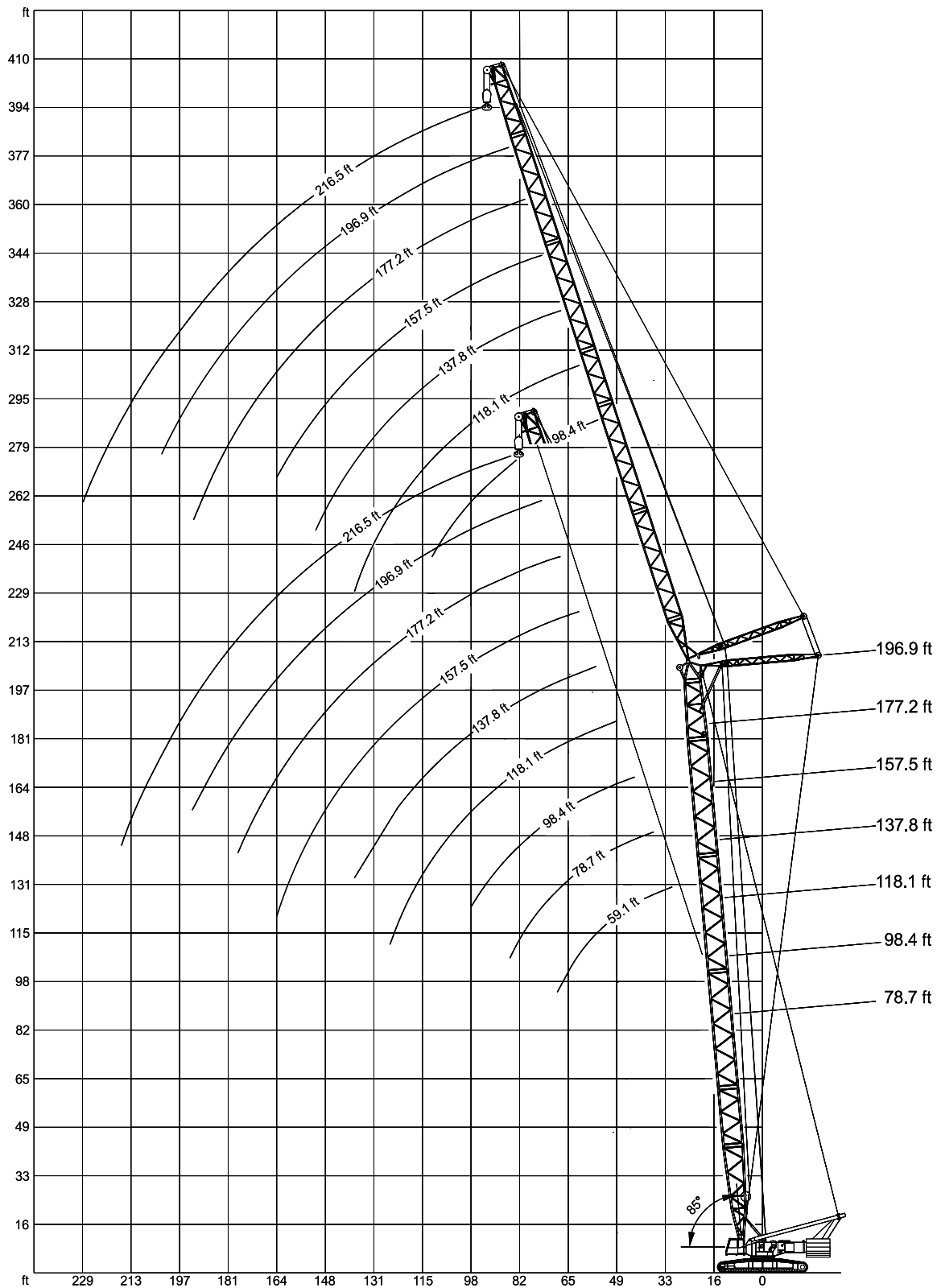
Working ranges fixed fly jib 30°

LF



Working ranges luffing fly jib, main boom 85°

SW



Lifting capacities luffing fly jib, main boom 85°

SW

Main boom: 78.7 ft

264,500 lb¹⁾  23.8 ft 360°

		Fly jib										
Radius lb	59,1	78,7	98,4	118,1	137,8	157,5	177,2	196,9	216,5			
ft	1,000 lb											
39	293.2	-	-	-	-	-	-	-	-	-	-	
45	244.7	-	-	-	-	-	-	-	-	-	-	
51	205.0	205.0	-	-	-	-	-	-	-	-	-	
57	176.4	174.2	172.0	-	-	-	-	-	-	-	-	
63	154.3	152.1	152.1	149.9	-	-	-	-	-	-	-	
69	136.7	136.7	134.5	134.5	132.3	-	-	-	-	-	-	
75	-	121.3	119.0	119.0	116.8	116.8	-	-	-	-	-	
81	-	110.2	108.0	108.0	105.8	105.8	103.6	-	-	-	-	
87	-	-	99.2	97.0	97.0	97.0	94.8	92.6	-	-	-	
93	-	-	90.4	90.4	88.2	88.2	86.0	86.0	77.2	-	-	
99	-	-	-	81.6	81.6	81.6	79.4	79.4	72.8	-	-	
111	-	-	-	70.5	70.5	68.3	68.3	68.3	63.9	-	-	
123	-	-	-	61.7	61.7	59.5	59.5	59.5	55.1	-	-	
135	-	-	-	-	52.9	52.9	50.7	50.7	48.5	-	-	
147	-	-	-	-	-	46.3	46.3	46.3	44.1	-	-	
159	-	-	-	-	-	-	41.9	39.7	39.7	37.5	-	
171	-	-	-	-	-	-	-	35.3	35.3	33.1	-	
183	-	-	-	-	-	-	-	-	33.1	28.7	-	
195	-	-	-	-	-	-	-	-	-	26.5	-	
207	-	-	-	-	-	-	-	-	-	-	22.0	

Main boom: 118.1 ft

264,500 lb¹⁾  23.8 ft 360°

		Fly jib										
Radius lb	59,1	78,7	98,4	118,1	137,8	157,5	177,2	196,9	216,5			
ft	1,000 lb											
51	202.8	-	-	-	-	-	-	-	-	-	-	
57	172.0	172.0	-	-	-	-	-	-	-	-	-	
63	152.1	149.9	149.9	-	-	-	-	-	-	-	-	
69	134.5	134.5	132.3	132.3	-	-	-	-	-	-	-	
75	-	119.0	116.8	116.8	114.6	-	-	-	-	-	-	
81	-	108.0	105.8	105.8	103.6	103.6	-	-	-	-	-	
87	-	99.2	97.0	97.0	94.8	94.8	92.6	-	-	-	-	
93	-	-	88.2	88.2	86.0	86.0	83.8	83.8	-	-	-	
99	-	-	81.6	81.6	79.4	79.4	77.2	77.2	68.3	-	-	
111	-	-	70.5	70.5	68.3	68.3	66.1	66.1	61.7	-	-	
123	-	-	-	61.7	59.5	59.5	57.3	57.3	55.1	-	-	
135	-	-	-	-	52.9	50.7	50.7	48.5	48.5	-	-	
147	-	-	-	-	-	46.3	44.1	44.1	41.9	-	-	
159	-	-	-	-	-	-	39.7	39.7	37.5	-	-	
171	-	-	-	-	-	-	-	35.3	35.3	33.1	-	
183	-	-	-	-	-	-	-	-	30.9	28.7	-	
195	-	-	-	-	-	-	-	-	-	28.7	26.5	
207	-	-	-	-	-	-	-	-	-	-	22.0	

Main boom: 98.4 ft

Radius lb	59,1	78,7	98,4	118,1	137,8	157,5	177,2	196,9	216,5			
ft	1,000 lb											
51	205.0	-	-	-	-	-	-	-	-	-	-	
57	174.2	174.2	-	-	-	-	-	-	-	-	-	
63	152.1	152.1	149.9	-	-	-	-	-	-	-	-	
69	136.7	134.5	132.3	132.3	-	-	-	-	-	-	-	
75	-	121.3	119.0	119.0	116.8	-	-	-	-	-	-	
81	-	110.2	108.0	105.8	105.8	103.6	-	-	-	-	-	
87	-	99.2	97.0	97.0	94.8	94.8	94.8	-	-	-	-	
93	-	-	90.4	88.2	88.2	86.0	86.0	83.8	-	-	-	
99	-	-	81.6	81.6	79.4	79.4	79.4	77.2	70.5	-	-	
111	-	-	70.5	70.5	68.3	68.3	66.1	66.1	61.7	-	-	
123	-	-	-	61.7	59.5	59.5	57.3	57.3	55.1	-	-	
135	-	-	-	-	52.9	52.9	50.7	50.7	48.5	-	-	
147	-	-	-	-	-	46.3	44.1	44.1	41.9	-	-	
159	-	-	-	-	-	-	41.9	39.7	39.7	37.5	-	
171	-	-	-	-	-	-	-	35.3	35.3	33.1	-	
183	-	-	-	-	-	-	-	-	30.9	28.7	-	
195	-	-	-	-	-	-	-	-	-	28.7	26.5	
207	-	-	-	-	-	-	-	-	-	-	22.0	

Main boom: 137.8 ft

Radius lb	78,7	98,4	118,1	137,8	157,5	177,2	196,9	216,5			
ft	1,000 lb										
57	169.8	-	-	-	-	-	-	-	-	-	-
63	149.9	147.7	-	-	-	-	-	-	-	-	-
69	132.3	130.1	130.1	-	-	-	-	-	-	-	-
75	119.0	116.8	114.6	114.6	-	-	-	-	-	-	-
81	108.0	105.8	103.6	103.6	101.4	-	-	-	-	-	-
87	97.0	94.8	94.8	92.6	92.6	92.6	-	-	-	-	-
93	-	88.2	88.2	86.0	86.0	83.8	77.2	-	-	-	-
99	-	81.6	79.4	79.4	77.2	77.2	72.8	66.1	-	-	-
111	-	70.5	68.3	68.3	66.1	66.1	66.1	59.5	-	-	-
123	-	-	59.5	59.5	57.3	57.3	57.3	57.3	52.9	-	-
135	-	-	-	50.7	50.7	48.5	48.5	48.5	48.5	-	-
147	-	-	-	-	46.3	44.1	44.1	44.1	41.9	-	-
159	-	-	-	-	-	39.7	39.7	37.5	37.5	-	-
171	-	-	-	-	-	-	35.3	35.3	33.1	-	-
183	-	-	-	-	-	-	-	30.9	30.9	28.7	-
195	-	-	-	-	-	-	-	-	28.7	26.5	-
207	-	-	-	-	-	-	-	-	-	-	22.0


Remarks

¹⁾ with 66,100 lb central ballast

Lifting capacities luffing fly jib, main boom 85°


SW

Main boom: 157.5 ft

264,500 lb¹⁾  **23.8 ft** **360°**

		Fly jib							
Radius lb	78,7	98,4	118,1	137,8	157,5	177,2	196,9	216,5	
ft	1,000 lb								
57	167.6	-	-	-	-	-	-	-	-
63	147.7	145.5	-	-	-	-	-	-	-
69	130.1	130.1	125.7	-	-	-	-	-	-
75	116.8	114.6	114.6	112.4	-	-	-	-	-
81	105.8	103.6	103.6	101.4	99.2	-	-	-	-
87	97.0	94.8	94.8	92.6	92.6	88.2	-	-	-
93	-	86.0	86.0	83.8	83.8	83.8	72.8	-	-
99	-	79.4	79.4	77.2	77.2	75.0	70.5	61.7	-
111	-	68.3	68.3	66.1	66.1	63.9	63.9	57.3	-
123	-	-	59.5	57.3	57.3	55.1	55.1	52.9	-
135	-	-	-	50.7	50.7	48.5	48.5	46.3	-
147	-	-	-	44.1	44.1	41.9	41.9	41.9	-
159	-	-	-	-	39.7	37.5	37.5	35.3	-
171	-	-	-	-	-	33.1	33.1	33.1	-
183	-	-	-	-	-	30.9	30.9	28.7	-
195	-	-	-	-	-	-	26.5	26.5	-
207	-	-	-	-	-	-	-	22.0	-
219	-	-	-	-	-	-	-	19.8	-

Main boom: 196.9 ft

264,500 lb¹⁾  **23.8 ft** **360°**

		Fly jib							
Radius lb	98,4	118,1	137,8	157,5	177,2	196,9	216,5		
ft	1,000 lb								
69	110.2	-	-	-	-	-	-	-	-
75	105.8	94.8	-	-	-	-	-	-	-
81	101.4	92.6	81.6	-	-	-	-	-	-
87	92.6	88.2	79.4	72.8	-	-	-	-	-
93	83.8	83.8	79.4	70.5	61.7	-	-	-	-
99	77.2	77.2	75.0	68.3	59.5	50.7	-	-	-
111	66.1	66.1	63.9	63.9	57.3	48.5	-	-	-
123	-	57.3	55.1	55.1	52.9	46.3	41.9	-	-
135	-	50.7	48.5	48.5	46.3	44.1	39.7	-	-
147	-	-	44.1	41.9	37.5	39.7	37.5	-	-
159	-	-	-	37.5	33.1	37.5	33.1	-	-
171	-	-	-	-	28.7	33.1	30.9	-	-
183	-	-	-	-	-	28.7	26.5	-	-
195	-	-	-	-	-	26.5	24.3	-	-
207	-	-	-	-	-	-	22.0	-	-
219	-	-	-	-	-	-	-	19.8	-

Main boom: 177.2 ft

Radius lb	98,4	118,1	137,8	157,5	177,2	196,9	216,5	
ft	1,000 lb							
69	123.5	-	-	-	-	-	-	-
75	114.6	108.0	-	-	-	-	-	-
81	103.6	101.4	94.8	-	-	-	-	-
87	92.6	92.6	90.4	83.8	-	-	-	-
93	86.0	83.8	83.8	81.6	72.8	-	-	-
99	79.4	77.2	77.2	75.0	70.5	59.5	-	-
111	68.3	66.1	66.1	63.9	63.9	55.1	-	-
123	-	57.3	57.3	55.1	55.1	52.9	46.3	-
135	-	-	50.7	48.5	48.5	48.5	44.1	-
147	-	-	44.1	44.1	41.9	41.9	39.7	-
159	-	-	-	39.7	37.5	37.5	35.3	-
171	-	-	-	-	33.1	33.1	30.9	-
183	-	-	-	-	30.9	28.7	28.7	-
195	-	-	-	-	-	26.5	24.3	-
207	-	-	-	-	-	-	22.0	-
219	-	-	-	-	-	-	-	19.8

Remarks

1) with 66,100 lb central ballast



Notes to lifting capacity

Lifting capacities do not exceed 75% of tipping load.

Weight of hook blocks and slings is part of the load, and is to be deducted from the capacity ratings.

Crane operation is permissible up to a

wind pressure of 1.25 lb/ft²

wind speed of 32 ft/s

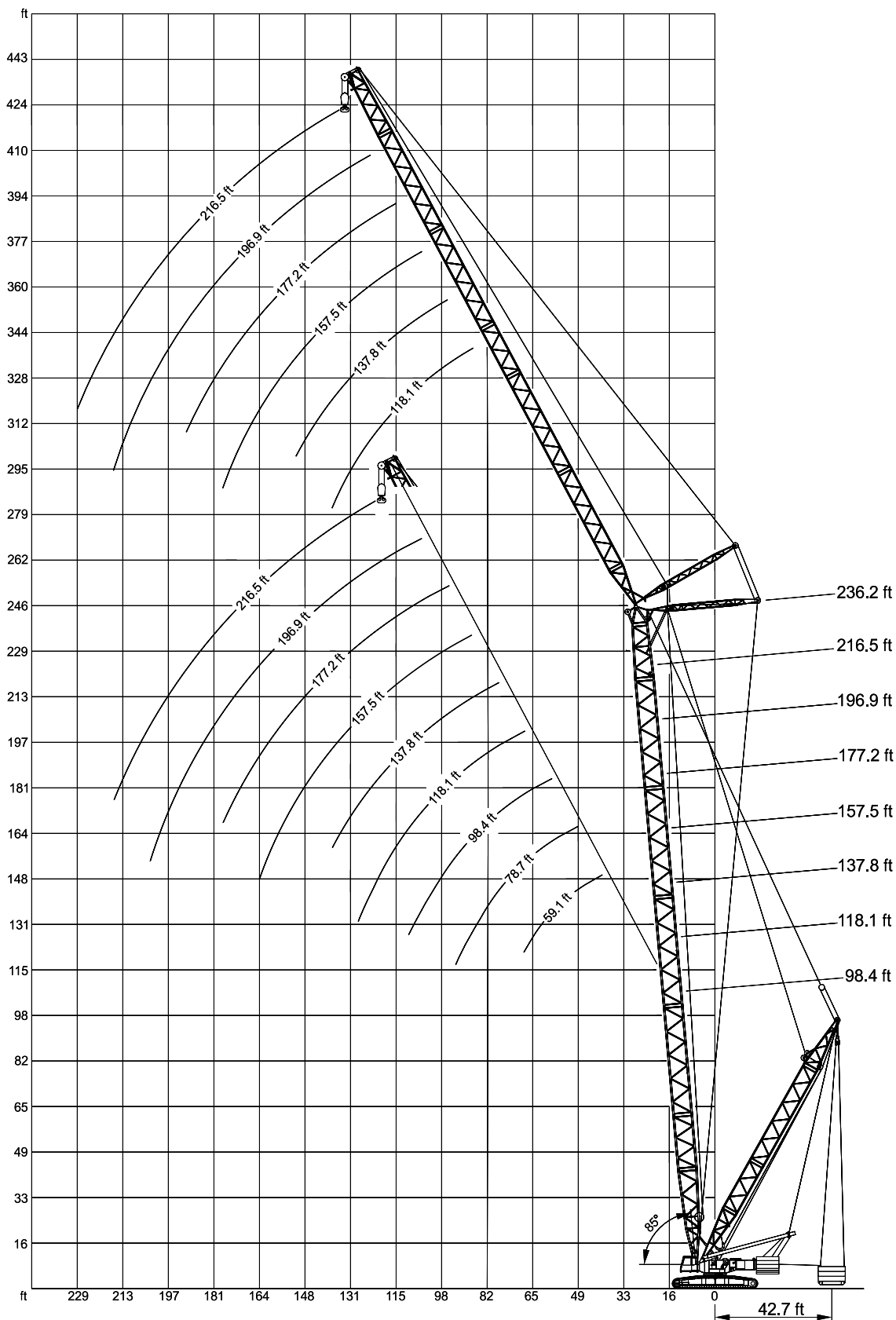
Consult operation manual for further details.

Note: Data published herein is intended as a guide only and shall not be construed to warrant applicability for lifting purposes. Crane operation is subject to the computer charts and operation manual both supplied with the crane.



Working ranges luffing fly jib with SL, main boom 85°

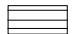
SWSL



Lifting capacities luffing fly jib with SL, main boom 85°

SWSL

Main boom: 98.4 ft SL-Radius 44.3 ft

198,400 lb  **23.8 ft** **360°**

Fly jib	Radius	lb	0	88,2	132,3	176,4	220,5	264,6
	ft	1,000 lb						
59.1 ft	39	235.9	330.7	330.7	-	-	-	330.7
	45	194.0	297.6	330.7	-	-	-	330.7
	51	163.1	253.5	297.6	328.5	-	-	330.7
	57	138.9	218.3	255.7	295.4	308.6	-	308.6
	63	121.3	191.8	224.9	260.1	273.4	-	273.4
	69	108.0	169.8	200.6	231.5	238.1	-	238.1

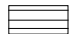
Fly jib	Radius	lb	0	88,2	132,3	176,4	220,5	264,6
	ft	1,000 lb						
78.7 ft	57	138.9	216.1	255.7	295.4	317.5	-	317.5
	63	121.3	189.6	224.9	260.1	286.6	-	286.6
	69	108.0	169.8	200.6	231.5	251.3	-	251.3
	75	94.8	152.1	178.6	207.2	222.7	-	222.7
	81	86.0	136.7	163.1	187.4	198.4	-	198.4
	87	79.4	125.7	149.9	172.0	178.6	-	178.6

Fly jib	Radius	lb	0	88,2	132,3	176,4	220,5	264,6
	ft	1,000 lb						
98.4 ft	63	119.0	187.4	222.7	257.9	282.2	-	282.2
	69	105.8	167.6	198.4	229.3	257.9	-	257.9
	75	94.8	149.9	176.4	205.0	229.3	-	229.3
	81	83.8	136.7	160.9	187.4	205.0	-	205.0
	87	77.2	123.5	147.7	169.8	185.2	-	185.2
	93	70.5	114.6	134.5	156.5	169.8	-	169.8
	99	63.9	105.8	125.7	145.5	154.3	-	154.3

Fly jib	Radius	lb	0	88,2	132,3	176,4	220,5	264,6
	ft	1,000 lb						
118.1 ft	69	105.8	167.6	198.4	229.3	244.7	-	244.7
	75	92.6	147.7	176.4	205.0	229.3	-	229.3
	81	83.8	134.5	160.9	185.2	207.2	-	207.2
	87	77.2	123.5	145.5	169.8	187.4	-	187.4
	93	70.5	112.4	134.5	156.5	169.8	-	169.8
	99	63.9	103.6	123.5	143.3	156.5	-	156.5
	111	55.1	90.4	108.0	125.7	132.3	-	132.3

Fly jib	Radius	lb	0	88,2	132,3	176,4	220,5	264,6
	ft	1,000 lb						
137.8 ft	75	92.6	147.7	174.2	202.8	209.4	-	209.4
	81	81.6	132.3	158.7	185.2	200.6	-	200.6
	87	75.0	121.3	145.5	167.6	185.2	-	185.2
	93	68.3	112.4	132.3	154.3	167.6	-	167.6
	99	61.7	103.6	123.5	143.3	154.3	-	154.3
	111	52.9	88.2	105.8	123.5	132.3	-	132.3
	123	46.3	77.2	92.6	110.2	114.6	-	114.6

SL-Radius 44.3 ft

198,400 lb  **23.8 ft** **360°**

Fly jib	Radius	lb	0	88,2	132,3	176,4	220,5	264,6
	ft	1,000 lb						
157.5 ft	81	81.6	132.3	158.7	169.8	-	-	169.8
	87	75.0	121.3	145.5	165.3	165.3	-	165.3
	93	68.3	110.2	132.3	154.3	160.9	-	160.9
	99	61.7	101.4	121.3	143.3	154.3	-	154.3
	111	52.9	88.2	105.8	123.5	132.3	-	132.3
	123	46.3	77.2	92.6	108.0	114.6	-	114.6
	135	39.7	68.3	81.6	97.0	99.2	-	99.2
	147	35.3	61.7	72.8	86.0	88.2	-	88.2
	159	30.9	55.1	66.1	75.0	75.0	-	75.0

Fly jib	Radius	lb	0	88,2	132,3	176,4	220,5	264,6
	ft	1,000 lb						
177.2 ft	87	72.8	119.0	138.9	138.9	-	-	138.9
	93	66.1	110.2	132.3	134.5	-	-	134.5
	99	59.5	101.4	121.3	130.1	-	-	130.1
	111	50.7	86.0	103.6	121.3	-	-	121.3
	123	44.1	75.0	90.4	108.0	110.2	-	110.2
	135	37.5	66.1	81.6	94.8	99.2	-	99.2
	147	33.1	59.5	72.8	86.0	88.2	-	88.2
	159	28.7	52.9	66.1	77.2	77.2	-	77.2
	171	26.5	48.5	59.5	68.3	68.3	-	68.3

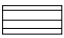

Fly jib	Radius	lb	0	88,2	132,3	176,4	220,5	132,3
	ft	1,000 lb						
196.9 ft	93	66.1	90.4	-	-	-	-	90.4
	99	59.5	86.0	-	-	-	-	86.0
	111	50.7	75.0	-	-	-	-	75.0
	123	44.1	68.3	-	-	-	-	68.3
	135	37.5	59.5	-	-	-	-	59.5
	147	33.1	52.9	-	-	-	-	52.9
	159	28.7	46.3	-	-	-	-	46.3
	171	26.5	41.9	-	-	-	-	41.9
	183	22.0	37.5	-	-	-	-	37.5
	195	19.8	33.1	-	-	-	-	33.1

Fly jib	Radius	lb	0	88,2	132,3	176,4	220,5	132,3
	ft	1,000 lb						
216.5 ft	99	59.5	72.8	-	-	-	-	72.8
	111	48.5	63.9	-	-	-	-	63.9
	123	41.9	57.3	-	-	-	-	57.3
	135	37.5	50.7	-	-	-	-	50.7
	147	30.9	44.1	-	-	-	-	44.1
	159	26.5	39.7	-	-	-	-	39.7
	171	24.3	33.1	-	-	-	-	33.1
	183	19.8	30.9	-	-	-	-	30.9
	195	17.6	26.5	-	-	-	-	26.5
	207	15.4	22.0	-	-	-	-	22.0

Lifting capacities luffing fly jib with SL, main boom 85°

SWSL

Main boom: 118.1 ft SL-Radius 44.3 ft

198,400 lb   **23.8 ft** **360°**

Fly jib	Radius	lb	0	88,2	132,3	176,4	220,5	264,6
	ft	1,000 lb						
59.1 ft	51	163.1	253.5	295.4	328.5	-	-	330.7
	57	138.9	216.1	255.7	295.4	317.5	-	317.5
	63	121.3	189.6	224.9	257.9	286.6	-	286.6
	69	108.0	169.8	200.6	231.5	249.1	-	249.1

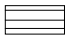

Fly jib	Radius	lb	0	88,2	132,3	176,4	220,5	264,6
	ft	1,000 lb						
78.7 ft	57	136.7	216.1	253.5	284.4	288.8	-	288.8
	63	119.0	189.6	222.7	257.9	280.0	-	280.0
	69	105.8	167.6	198.4	229.3	257.9	-	257.9
	75	94.8	149.9	178.6	205.0	229.3	-	229.3
	81	86.0	136.7	160.9	187.4	205.0	-	205.0
	87	77.2	125.7	147.7	172.0	185.2	-	185.2

Fly jib	Radius	lb	0	88,2	132,3	176,4	220,5	264,6
	ft	1,000 lb						
98.4 ft	63	119.0	187.4	222.7	246.9	249.1	-	249.1
	69	103.6	165.3	196.2	227.1	240.3	-	240.3
	75	92.6	147.7	176.4	205.0	229.3	-	229.3
	81	83.8	134.5	160.9	185.2	211.6	-	211.6
	87	77.2	123.5	145.5	169.8	191.8	-	191.8
	93	70.5	112.4	134.5	156.5	176.4	-	176.4
	99	63.9	103.6	123.5	143.3	156.5	-	156.5
111	55.1	90.4	108.0	121.3	123.5	-	123.5	

Fly jib	Radius	lb	0	88,2	132,3	176,4	220,5	264,6
	ft	1,000 lb						
118.1 ft	69	103.6	165.3	196.2	213.8	-	-	213.8
	75	92.6	147.7	176.4	202.8	209.4	-	209.4
	81	83.8	134.5	158.7	185.2	202.8	-	202.8
	87	75.0	121.3	145.5	169.8	191.8	-	191.8
	93	68.3	112.4	134.5	156.5	176.4	-	176.4
	99	63.9	103.6	123.5	143.3	163.1	-	163.1
	111	52.9	90.4	108.0	125.7	136.7	-	136.7
	123	46.3	79.4	94.8	110.2	112.4	-	112.4

Fly jib	Radius	lb	0	88,2	132,3	176,4	220,5	264,6
	ft	1,000 lb						
137.8 ft	75	90.4	145.5	174.2	183.0	-	-	183.0
	81	81.6	132.3	158.7	178.6	178.6	-	178.6
	87	72.8	121.3	143.3	167.6	176.4	-	176.4
	93	68.3	110.2	132.3	154.3	172.0	-	172.0
	99	61.7	101.4	121.3	141.1	163.1	-	163.1
	111	52.9	88.2	105.8	123.5	138.9	-	138.9
	123	44.1	77.2	92.6	108.0	116.8	-	116.8
	135	39.7	68.3	81.6	97.0	99.2	-	99.2
	147	35.3	61.7	75.0	79.4	-	-	79.4

SL-Radius 44.3 ft

198,400 lb   **23.8 ft** **360°**

Fly jib	Radius	lb	0	88,2	132,3	176,4	220,5	264,6
	ft	1,000 lb						
157.5 ft	81	81.6	132.3	152.1	152.1	-	-	152.1
	87	72.8	119.0	143.3	149.9	-	-	149.9
	93	66.1	110.2	132.3	145.5	145.5	-	145.5
	99	61.7	101.4	121.3	141.1	143.3	-	143.3
	111	50.7	88.2	105.8	123.5	134.5	-	134.5
	123	44.1	77.2	92.6	108.0	121.3	-	121.3
	135	39.7	68.3	81.6	97.0	103.6	-	103.6
	147	33.1	59.5	72.8	86.0	88.2	-	88.2
	159	30.9	52.9	66.1	75.0	75.0	-	75.0

Fly jib	Radius	lb	0	88,2	132,3	176,4	220,5	264,6
	ft	1,000 lb						
177.2 ft	87	72.8	119.0	125.7	125.7	-	-	125.7
	93	66.1	108.0	123.5	123.5	-	-	123.5
	99	59.5	99.2	119.0	119.0	-	-	119.0
	111	50.7	86.0	103.6	112.4	-	-	112.4
	123	44.1	75.0	90.4	103.6	103.6	-	103.6
	135	37.5	66.1	81.6	94.8	97.0	-	97.0
	147	33.1	59.5	72.8	83.8	90.4	-	90.4
	159	28.7	52.9	63.9	77.2	79.4	-	79.4
171	26.5	48.5	59.5	68.3	68.3	-	68.3	

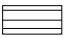

Fly jib	Radius	lb	0	88,2	132,3	176,4	220,5	132,3
	ft	1,000 lb						
196.9 ft	93	66.1	86.0	-	-	-	-	86.0
	99	59.5	81.6	-	-	-	-	81.6
	111	50.7	72.8	-	-	-	-	72.8
	123	44.1	63.9	-	-	-	-	63.9
	135	37.5	57.3	-	-	-	-	57.3
	147	33.1	50.7	-	-	-	-	50.7
	159	28.7	46.3	-	-	-	-	46.3
	171	24.3	39.7	-	-	-	-	39.7
	183	22.0	35.3	-	-	-	-	35.3
195	19.8	33.1	-	-	-	-	33.1	

Fly jib	Radius	lb	0	88,2	132,3	176,4	220,5	132,3
	ft	1,000 lb						
216.5 ft	99	57.3	68.3	-	-	-	-	68.3
	111	48.5	61.7	-	-	-	-	61.7
	123	41.9	55.1	-	-	-	-	55.1
	135	35.3	48.5	-	-	-	-	48.5
	147	30.9	41.9	-	-	-	-	41.9
	159	26.5	37.5	-	-	-	-	37.5
	171	24.3	33.1	-	-	-	-	33.1
	183	19.8	28.7	-	-	-	-	28.7
	195	17.6	26.5	-	-	-	-	26.5
	207	15.4	22.0	-	-	-	-	22.0

Lifting capacities luffing fly jib with SL, main boom 85°

SWSL

Main boom: 137.8 ft SL-Radius 44.3 ft

198,400 lb   **23.8 ft** **360°**

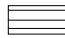

Fly jib	Radius	lb	1,000 lb					264,6
			0	88,2	132,3	176,4	220,5	
78.7 ft	ft							
	57	136.7	213.8	249.1	266.8	-	266.8	
	63	119.0	187.4	222.7	251.3	260.1	260.1	
	69	105.8	167.6	198.4	229.3	249.1	249.1	
	75	92.6	149.9	176.4	205.0	233.7	233.7	
	81	83.8	134.5	160.9	185.2	211.6	211.6	
	87	77.2	123.5	147.7	169.8	189.6	189.6	

Fly jib	Radius	lb	1,000 lb					264,6
			0	88,2	132,3	176,4	220,5	
98.4 ft	ft							
	63	116.8	185.2	216.1	224.9	-	224.9	
	69	103.6	165.3	196.2	218.3	220.5	220.5	
	75	92.6	147.7	174.2	202.8	216.1	216.1	
	81	83.8	134.5	158.7	185.2	207.2	207.2	
	87	75.0	121.3	145.5	169.8	191.8	191.8	
	93	68.3	112.4	134.5	156.5	176.4	176.4	

Fly jib	Radius	lb	1,000 lb					264,6
			0	88,2	132,3	176,4	220,5	
118.1 ft	ft							
	69	101.4	163.1	189.6	194.0	-	194.0	
	75	90.4	145.5	174.2	189.6	-	189.6	
	81	81.6	132.3	158.7	183.0	187.4	187.4	
	87	75.0	121.3	145.5	167.6	180.8	180.8	
	93	68.3	110.2	132.3	154.3	176.4	176.4	
	99	61.7	101.4	123.5	143.3	163.1	163.1	

Fly jib	Radius	lb	1,000 lb					264,6
			0	88,2	132,3	176,4	220,5	
137.8 ft	ft							
	75	90.4	145.5	165.3	167.6	-	167.6	
	81	79.4	132.3	156.5	165.3	-	165.3	
	87	72.8	119.0	143.3	160.9	163.1	163.1	
	93	66.1	110.2	132.3	152.1	158.7	158.7	
	99	59.5	101.4	121.3	141.1	156.5	156.5	
	111	50.7	86.0	105.8	123.5	138.9	138.9	
	123	44.1	75.0	92.6	108.0	119.0	119.0	

SL-Radius 44.3 ft

198,400 lb   **23.8 ft** **360°**

Fly jib	Radius	lb	1,000 lb					264,6
			0	88,2	132,3	176,4	220,5	
157.5 ft	ft							
	81	79.4	130.1	143.3	143.3	-	143.3	
	87	72.8	119.0	141.1	141.1	-	141.1	
	93	66.1	110.2	130.1	138.9	-	138.9	
	99	59.5	99.2	121.3	136.7	136.7	136.7	
	111	50.7	86.0	103.6	121.3	132.3	132.3	
	123	44.1	75.0	90.4	108.0	121.3	121.3	
	135	37.5	66.1	81.6	94.8	105.8	105.8	
	147	33.1	59.5	72.8	86.0	90.4	90.4	
	159	28.7	52.9	66.1	75.0	77.2	77.2	

Fly jib	Radius	lb	1,000 lb					264,6
			0	88,2	132,3	176,4	220,5	
177.2 ft	ft							
	87	70.5	116.8	121.3	-	-	121.3	
	93	63.9	108.0	119.0	119.0	-	119.0	
	99	59.5	99.2	114.6	116.8	-	116.8	
	111	50.7	86.0	103.6	110.2	-	110.2	
	123	41.9	75.0	90.4	103.6	103.6	103.6	
	135	37.5	66.1	79.4	94.8	99.2	99.2	
	147	33.1	57.3	70.5	83.8	92.6	92.6	
	159	28.7	52.9	63.9	75.0	81.6	81.6	
	171	24.3	46.3	57.3	68.3	70.5	70.5	

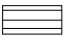
Fly jib	Radius	lb	1,000 lb					132,3
			0	88,2	132,3	176,4	220,5	
196.9 ft	ft							
	93	63.9	86.0	-	-	-	86.0	
	99	59.5	81.6	-	-	-	81.6	
	111	48.5	72.8	-	-	-	72.8	
	123	41.9	66.1	-	-	-	66.1	
	135	37.5	59.5	-	-	-	59.5	
	147	30.9	52.9	-	-	-	52.9	
	159	28.7	46.3	-	-	-	46.3	
	171	24.3	41.9	-	-	-	41.9	
	183	22.0	37.5	-	-	-	37.5	

Fly jib	Radius	lb	1,000 lb					132,3
			0	88,2	132,3	176,4	220,5	
216.5 ft	ft							
	99	55.1	68.3	-	-	-	68.3	
	111	46.3	61.7	-	-	-	61.7	
	123	39.7	55.1	-	-	-	55.1	
	135	35.3	48.5	-	-	-	48.5	
	147	30.9	44.1	-	-	-	44.1	
	159	26.5	37.5	-	-	-	37.5	
	171	22.0	33.1	-	-	-	33.1	
	183	19.8	30.9	-	-	-	30.9	
	195	17.6	26.5	-	-	-	26.5	

Lifting capacities luffing fly jib with SL, main boom 85°

SWSL

Main boom: 157.5 ft SL-Radius 44.3 ft

198,400 lb  **23.8 ft** **360°**

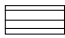
Fly jib	Radius	lb	1,000 lb				
			0	88,2	132,3	176,4	220,5
78.7 ft	57	134.5	211.6	238.1	238.1	-	238.1
	63	116.8	187.4	220.5	231.5	-	231.5
	69	103.6	165.3	196.2	222.7	227.1	227.1
	75	92.6	147.7	176.4	202.8	218.3	218.3
	81	83.8	134.5	158.7	185.2	207.2	207.2
	87	75.0	123.5	145.5	169.8	194.0	194.0

Fly jib	Radius	lb	1,000 lb				
			0	88,2	132,3	176,4	220,5
98.4 ft	63	114.6	183.0	198.4	-	-	198.4
	69	101.4	163.1	189.6	196.2	-	196.2
	75	90.4	145.5	174.2	187.4	-	187.4
	81	81.6	132.3	158.7	178.6	178.6	178.6
	87	75.0	121.3	143.3	167.6	174.2	174.2
	93	68.3	110.2	132.3	154.3	169.8	169.8
	99	61.7	101.4	121.3	143.3	163.1	163.1

Fly jib	Radius	lb	1,000 lb				
			0	88,2	132,3	176,4	220,5
118.1 ft	69	101.4	158.7	169.8	-	-	169.8
	75	90.4	145.5	165.3	167.6	-	167.6
	81	81.6	132.3	154.3	163.1	-	163.1
	87	72.8	119.0	143.3	158.7	158.7	158.7
	93	66.1	110.2	132.3	149.9	152.1	152.1
	99	61.7	101.4	121.3	141.1	147.7	147.7
	111	52.9	88.2	105.8	123.5	138.9	138.9

Fly jib	Radius	lb	1,000 lb				
			0	88,2	132,3	176,4	220,5
137.8 ft	75	88.2	138.9	143.3	-	-	143.3
	81	79.4	130.1	141.1	143.3	-	143.3
	87	72.8	119.0	138.9	141.1	-	141.1
	93	66.1	108.0	130.1	136.7	-	136.7
	99	59.5	99.2	119.0	132.3	132.3	132.3
	111	50.7	86.0	103.6	121.3	127.9	127.9
	123	44.1	75.0	90.4	105.8	121.3	121.3
	135	37.5	66.1	81.6	94.8	103.6	103.6
	147	33.1	59.5	72.8	83.8	86.0	86.0

SL-Radius 44.3 ft

198,400 lb  **23.8 ft** **360°**

Fly jib	Radius	lb	1,000 lb				
			0	88,2	132,3	176,4	220,5
157.5 ft	81	79.4	123.5	123.5	-	-	123.5
	87	70.5	119.0	121.3	-	-	121.3
	93	63.9	108.0	119.0	119.0	-	119.0
	99	59.5	99.2	116.8	116.8	-	116.8
	111	50.7	86.0	103.6	112.4	-	112.4
	123	44.1	75.0	90.4	105.8	108.0	108.0
	135	37.5	66.1	79.4	94.8	103.6	103.6
	147	33.1	59.5	72.8	83.8	92.6	92.6
	159	28.7	52.9	63.9	77.2	79.4	79.4

Fly jib	Radius	lb	1,000 lb				
			0	88,2	132,3	176,4	220,5
177.2 ft	87	70.5	103.6	103.6	-	-	103.6
	93	63.9	101.4	103.6	-	-	103.6
	99	57.3	97.0	101.4	101.4	-	101.4
	111	48.5	83.8	97.0	97.0	-	97.0
	123	41.9	72.8	88.2	92.6	-	92.6
	135	35.3	63.9	79.4	88.2	-	88.2
	147	30.9	57.3	70.5	81.6	83.8	83.8
	159	26.5	50.7	63.9	75.0	79.4	79.4
	171	24.3	46.3	57.3	68.3	70.5	70.5
	183	22.0	41.9	52.9	59.5	61.7	61.7

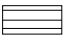

Fly jib	Radius	lb	1,000 lb				
			0	88,2	132,3	176,4	220,5
196.9 ft	93	61.7	79.4	-	-	-	79.4
	99	57.3	75.0	-	-	-	75.0
	111	48.5	70.5	-	-	-	70.5
	123	41.9	63.9	-	-	-	63.9
	135	35.3	57.3	-	-	-	57.3
	147	30.9	50.7	-	-	-	50.7
	159	26.5	44.1	-	-	-	44.1
	171	24.3	39.7	-	-	-	39.7
	183	19.8	35.3	-	-	-	35.3
	195	17.6	33.1	-	-	-	33.1

Fly jib	Radius	lb	1,000 lb				
			0	88,2	132,3	176,4	220,5
216.5 ft	99	52.9	63.9	-	-	-	63.9
	111	44.1	57.3	-	-	-	57.3
	123	37.5	50.7	-	-	-	50.7
	135	33.1	46.3	-	-	-	46.3
	147	28.7	41.9	-	-	-	41.9
	159	24.3	37.5	-	-	-	37.5
	171	22.0	33.1	-	-	-	33.1
	183	19.8	28.7	-	-	-	28.7
	195	15.4	26.5	-	-	-	26.5
	207	13.2	22.0	-	-	-	22.0

Lifting capacities luffing fly jib with SL, main boom 85°

SWSL

Main boom: 177.2 ft SL-Radius 44.3 ft

198,400 lb   **23.8 ft** **360°**

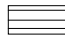

Fly jib	Radius	lb	0	88,2	132,3	176,4	220,5	264,6
	ft	1,000 lb						
98.4 ft	69	101.4	160.9	165.3	-	-	-	165.3
	75	88.2	145.5	163.1	163.1	-	-	163.1
	81	79.4	132.3	156.5	158.7	-	-	158.7
	87	72.8	119.0	143.3	154.3	-	-	154.3
	93	66.1	110.2	132.3	149.9	152.1	-	152.1
	99	61.7	101.4	121.3	141.1	147.7	-	147.7
	111	52.9	88.2	105.8	123.5	134.5	-	134.5

Fly jib	Radius	lb	0	88,2	132,3	176,4	220,5	264,6
	ft	1,000 lb						
118.1 ft	75	88.2	138.9	141.1	-	-	-	141.1
	81	79.4	130.1	138.9	138.9	-	-	138.9
	87	72.8	119.0	136.7	136.7	-	-	136.7
	93	66.1	110.2	130.1	134.5	-	-	134.5
	99	59.5	101.4	121.3	130.1	130.1	-	130.1
	111	50.7	86.0	103.6	121.3	125.7	-	125.7
	123	44.1	75.0	92.6	108.0	119.0	-	119.0

Fly jib	Radius	lb	0	88,2	132,3	176,4	220,5	264,6
	ft	1,000 lb						
137.8 ft	81	77.2	123.5	123.5	-	-	-	123.5
	87	70.5	116.8	121.3	121.3	-	-	121.3
	93	63.9	108.0	121.3	121.3	-	-	121.3
	99	59.5	99.2	116.8	119.0	-	-	119.0
	111	50.7	86.0	103.6	114.6	-	-	114.6
	123	41.9	75.0	90.4	105.8	108.0	-	108.0
	135	37.5	66.1	79.4	94.8	101.4	-	101.4

Fly jib	Radius	lb	0	88,2	132,3	176,4	220,5	264,6
	ft	1,000 lb						
157.5 ft	87	70.5	108.0	108.0	-	-	-	108.0
	93	63.9	105.8	105.8	-	-	-	105.8
	99	57.3	99.2	105.8	105.8	-	-	105.8
	111	48.5	83.8	101.4	101.4	-	-	101.4
	123	41.9	75.0	90.4	97.0	-	-	97.0
	135	37.5	66.1	79.4	92.6	92.6	-	92.6
	147	33.1	57.3	70.5	83.8	88.2	-	88.2
	159	28.7	52.9	63.9	75.0	79.4	-	79.4

SL-Radius 44.3 ft

198,400 lb   **23.8 ft** **360°**

Fly jib	Radius	lb	0	88,2	132,3	176,4	220,5	264,6
	ft	1,000 lb						
177.2 ft	93	61.7	92.6	92.6	-	-	-	92.6
	99	55.1	92.6	92.6	-	-	-	92.6
	111	46.3	83.8	88.2	-	-	-	88.2
	123	39.7	72.8	86.0	86.0	-	-	86.0
	135	35.3	63.9	77.2	83.8	-	-	83.8
	147	30.9	57.3	70.5	81.6	81.6	-	81.6
	159	26.5	50.7	61.7	75.0	77.2	-	77.2
	171	24.3	46.3	57.3	68.3	70.5	-	70.5
	183	19.8	41.9	50.7	59.5	61.7	-	61.7

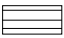

Fly jib	Radius	lb	0	88,2	132,3	176,4	220,5	132,3
	ft	1,000 lb						
196.9 ft	99	55.1	75.0	-	-	-	-	75.0
	111	46.3	70.5	-	-	-	-	70.5
	123	39.7	63.9	-	-	-	-	63.9
	135	35.3	57.3	-	-	-	-	57.3
	147	30.9	50.7	-	-	-	-	50.7
	159	26.5	46.3	-	-	-	-	46.3
	171	22.0	39.7	-	-	-	-	39.7
	183	19.8	35.3	-	-	-	-	35.3

Fly jib	Radius	lb	0	88,2	132,3	176,4	220,5	132,3
	ft	1,000 lb						
216.5 ft	111	41.9	57.3	-	-	-	-	57.3
	123	37.5	52.9	-	-	-	-	52.9
	135	30.9	46.3	-	-	-	-	46.3
	147	26.5	41.9	-	-	-	-	41.9
	159	24.3	37.5	-	-	-	-	37.5
	171	19.8	33.1	-	-	-	-	33.1
	183	17.6	30.9	-	-	-	-	30.9
	195	15.4	26.5	-	-	-	-	26.5
	207	13.2	24.3	-	-	-	-	24.3

Lifting capacities luffing fly jib with SL, main boom 85°

SWSL

Main boom: 196.9 ft SL-Radius 44.3 ft

198,400 lb   **23.8 ft** **360°**

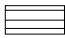

Fly jib	Radius	lb	1,000 lb				220,5
			0	88,2	132,3	176,4	
98.4 ft	ft						
	69	99.2	143.3	143.3	-	143.3	
	75	88.2	138.9	138.9	-	138.9	
	81	79.4	130.1	136.7	136.7	136.7	
	87	72.8	119.0	134.5	134.5	134.5	
	93	66.1	108.0	130.1	130.1	130.1	
	99	59.5	99.2	121.3	127.9	127.9	
	111	50.7	86.0	103.6	121.3	121.3	

Fly jib	Radius	lb	1,000 lb				264,6
			0	88,2	132,3	176,4	
118.1 ft	ft						
	75	86.0	121.3	121.3	-	121.3	
	81	79.4	119.0	119.0	-	119.0	
	87	70.5	114.6	116.8	-	116.8	
	93	63.9	108.0	114.6	114.6	114.6	
	99	59.5	99.2	112.4	112.4	112.4	
	111	50.7	86.0	103.6	105.8	105.8	
	123	44.1	75.0	90.4	101.4	101.4	

Fly jib	Radius	lb	1,000 lb				264,6
			0	88,2	132,3	176,4	
137.8 ft	ft						
	81	75.0	103.6	103.6	-	103.6	
	87	68.3	103.6	103.6	-	103.6	
	93	63.9	101.4	101.4	-	101.4	
	99	57.3	97.0	99.2	99.2	99.2	
	111	48.5	83.8	94.8	94.8	94.8	
	123	41.9	72.8	88.2	92.6	92.6	
	135	37.5	63.9	79.4	88.2	88.2	

Fly jib	Radius	lb	1,000 lb				220,5
			0	88,2	132,3	176,4	
157.5 ft	ft						
	87	66.1	88.2	88.2	-	88.2	
	93	61.7	88.2	88.2	-	88.2	
	99	55.1	88.2	88.2	-	88.2	
	111	48.5	83.8	86.0	-	86.0	
	123	41.9	72.8	81.6	81.6	81.6	
	135	35.3	63.9	77.2	79.4	79.4	
	147	30.9	57.3	70.5	77.2	77.2	

SL-Radius 44.3 ft

198,400 lb   **23.8 ft** **360°**

Fly jib	Radius	lb	1,000 lb				220,5
			0	88,2	132,3	176,4	
177.2 ft	ft						
	93	57.3	75.0	75.0	-	75.0	
	99	52.9	75.0	75.0	-	75.0	
	111	44.1	75.0	75.0	-	75.0	
	123	39.7	70.5	72.8	-	72.8	
	135	33.1	63.9	70.5	70.5	70.5	
	147	28.7	55.1	68.3	68.3	68.3	
	159	26.5	50.7	61.7	66.1	66.1	
	171	22.0	44.1	57.3	63.9	63.9	
	183	19.8	41.9	50.7	59.5	59.5	

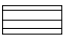

Fly jib	Radius	lb	1,000 lb				264,6
			0	88,2	132,3	176,4	
196.9 ft	ft						
	99	50.7	63.9	-	-	63.9	
	111	44.1	61.7	-	-	61.7	
	123	37.5	57.3	-	-	57.3	
	135	33.1	52.9	-	-	52.9	
	147	28.7	48.5	-	-	48.5	
	159	24.3	44.1	-	-	44.1	
	171	22.0	37.5	-	-	37.5	
	183	19.8	33.1	-	-	33.1	
	195	17.6	30.9	-	-	30.9	

Fly jib	Radius	lb	1,000 lb				220,5	132,3
			0	88,2	132,3	176,4		
216.5 ft	ft							
	111	39.7	50.7	-	-	50.7		
	123	35.3	48.5	-	-	48.5		
	135	28.7	44.1	-	-	44.1		
	147	24.3	41.9	-	-	41.9		
	159	22.0	37.5	-	-	37.5		
	171	19.8	33.1	-	-	33.1		
	183	17.6	28.7	-	-	28.7		
	195	15.4	26.5	-	-	26.5		
	207	13.2	22.0	-	-	22.0		

Lifting capacities luffing fly jib with SL, main boom 85°

SWSL

Main boom: 216.5 ft SL-Radius 44.3 ft

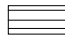

198,400 lb   **23.8 ft** **360°**

Fly jib	Radius	lb	1,000 lb			
			0	88,2	132,3	176,4
	ft					
	75	83.8	108.0	-	-	108.0
	81	77.2	105.8	105.8	-	105.8
	87	68.3	103.6	103.6	-	103.6
118.1 ft	93	63.9	101.4	101.4	-	101.4
	99	57.3	97.0	99.2	-	99.2
	111	48.5	83.8	92.6	-	92.6
	123	41.9	75.0	88.2	88.2	88.2
	135	37.5	66.1	79.4	83.8	83.8

Fly jib	Radius	lb	1,000 lb			
			0	88,2	132,3	176,4
	ft					
	79	75.0	90.4	-	-	90.4
	81	72.8	90.4	-	-	90.4
	87	66.1	90.4	90.4	-	90.4
137.8 ft	93	59.5	88.2	88.2	-	88.2
	99	55.1	86.0	86.0	-	86.0
	111	46.3	81.6	81.6	-	81.6
	123	39.7	72.8	79.4	79.4	79.4
	135	35.3	63.9	75.0	75.0	75.0
	147	30.9	57.3	70.5	72.8	72.8

Fly jib	Radius	lb	1,000 lb			
			0	88,2	132,3	176,4
	ft					
	87	63.9	77.2	-	-	77.2
	93	57.3	77.2	77.2	-	77.2
	99	52.9	77.2	77.2	-	77.2
157.5 ft	111	46.3	75.0	75.0	-	75.0
	123	39.7	70.5	72.8	-	72.8
	135	33.1	63.9	68.3	68.3	68.3
	147	30.9	57.3	66.1	66.1	66.1
	159	26.5	50.7	61.7	63.9	63.9
	171	24.3	46.3	57.3	61.7	61.7

SL-Radius 44.3 ft

198,400 lb   **23.8 ft** **360°**

Fly jib	Radius	lb	1,000 lb			
			0	88,2	132,3	176,4
	ft					
	93	55.1	63.9	-	-	63.9
	99	50.7	63.9	-	-	63.9
	111	41.9	61.7	-	-	61.7
177.2 ft	123	37.5	61.7	61.7	-	61.7
	135	30.9	59.5	59.5	-	59.5
	147	26.5	55.1	59.5	59.5	59.5
	159	24.3	48.5	57.3	57.3	57.3
	171	22.0	44.1	55.1	55.1	55.1
	183	19.8	39.7	50.7	52.9	52.9

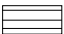

Fly jib	Radius	lb	1,000 lb				
			0	88,2	132,3	176,4	220,5
	ft						
	99	48.5	52.9	-	-	-	52.9
	111	41.9	52.9	-	-	-	52.9
	123	35.3	50.7	-	-	-	50.7
196.9 ft	135	30.9	48.5	-	-	-	48.5
	147	26.5	46.3	-	-	-	46.3
	159	22.0	41.9	-	-	-	41.9
	171	19.8	39.7	-	-	-	39.7
	183	17.6	35.3	-	-	-	35.3
	195	15.4	33.1	-	-	-	33.1

Fly jib	Radius	lb	1,000 lb				
			0	88,2	132,3	176,4	220,5
	ft						
	111	37.5	41.9	-	-	-	41.9
	123	33.1	41.9	-	-	-	41.9
	135	26.5	41.9	-	-	-	41.9
216.5 ft	147	24.3	39.7	-	-	-	39.7
	159	19.8	35.3	-	-	-	35.3
	171	17.6	33.1	-	-	-	33.1
	183	15.4	30.9	-	-	-	30.9
	195	13.2	28.7	-	-	-	28.7
	207	11.0	24.3	-	-	-	24.3
	219	11.0	22.0	-	-	-	22.0

Lifting capacities luffing fly jib with SL, main boom 85°

SWSL

Main boom: 236.2 ft SL-Radius 44.3 ft

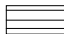

198,400 lb   **23.8 ft** **360°**

Fly jib	Radius	lb	0	88,2	132,3	176,4
	ft		1,000 lb			
	75	81.6	90.4	-		90.4
	81	72.8	90.4	-		90.4
	87	66.1	88.2	88.2		88.2
118.1 ft	93	61.7	86.0	86.0		86.0
	99	55.1	83.8	83.8		83.8
	111	48.5	81.6	81.6		81.6
	123	41.9	77.2	77.2		77.2
	135	35.3	63.9	75.0		75.0

Fly jib	Radius	lb	0	88,2	132,3	176,4
	ft		1,000 lb			
	79	72.8	77.2	-		77.2
	81	68.3	77.2	-		77.2
	87	61.7	77.2	-		77.2
137.8 ft	93	57.3	77.2	77.2		77.2
	99	52.9	75.0	75.0		75.0
	111	44.1	72.8	72.8		72.8
	123	37.5	70.5	70.5		70.5
	135	33.1	63.9	66.1		66.1
	147	30.9	55.1	63.9		63.9

Fly jib	Radius	lb	0	88,2	132,3	176,4
	ft		1,000 lb			
	87	61.7	61.7	-		61.7
	93	55.1	61.7	-		61.7
	99	50.7	61.7	-		61.7
157.5 ft	111	41.9	61.7	-		61.7
	123	37.5	59.5	59.5		59.5
	135	33.1	57.3	57.3		57.3
	147	28.7	55.1	57.3		57.3
	159	24.3	50.7	55.1		55.1
	171	22.0	44.1	52.9		52.9

SL-Radius 44.3 ft

198,400 lb   **23.8 ft** **360°**

Fly jib	Radius	lb	0	88,2	132,3	176,4
	ft		1,000 lb			
	93	52.9	52.9	-		52.9
	99	48.5	52.9	-		52.9
	111	39.7	52.9	-		52.9
177.2 ft	123	35.3	52.9	52.9		52.9
	135	28.7	52.9	52.9		52.9
	147	26.5	50.7	50.7		50.7
	159	22.0	48.5	48.5		48.5
	171	19.8	44.1	46.3		46.3
	183	17.6	39.7	46.3		46.3

Fly jib	Radius	lb	0	88,2	132,3	132,3
	ft		1,000 lb			
	123	33.1	41.9	-		41.9
	135	28.7	41.9	-		41.9
	147	24.3	41.9	-		41.9
196.9 ft	159	22.0	39.7	-		39.7
	171	19.8	37.5	-		37.5
	183	15.4	35.3	-		35.3
	195	15.4	33.1	-		33.1
	207	13.2	30.9	-		30.9

Fly jib	Radius	lb	0	88,2	132,3	132,3
	ft		1,000 lb			
	123	30.9	37.5	-		37.5
	135	24.3	37.5	-		37.5
	147	22.0	35.3	-		35.3
216.5 ft	159	17.6	33.1	-		33.1
	171	15.4	30.9	-		30.9
	183	13.2	28.7	-		28.7
	195	11.0	26.5	-		26.5
	207	11.0	24.3	-		24.3
	219	8.8	22.0	-		22.0

Technical description

Crawler carrier

3-section carrier comprising of carbody and 2 crawler side frames, pin-connected hydraulically to facilitate removal of crawlers for transportation.
Track width 23.8 ft.

- Carbody:** Bending- and torsion-resistant welded structure of cellular design, made from high-strength fine grain structural steel.
- Crawlers:** Side frames: bending-resistant welded structure fabricated of high-strength fine grain structural steel. Crawler shoes, idler wheels and drive sprockets made from high-strength cast steel. 14 track rollers per side frame with hardened rolling surfaces. Centralized lubrication.
- Drive:** Each crawler powered by one hydraulic motor through closed planetary gear unit running in oil. Crawlers provide independent infinitely variable control and counter-rotation capability.

Superstructure

- Frame:** Torsion-resistant welded structure made from high-strength fine grain structural steel. Connected to carrier by triple-row roller bearing slew ring.
- Drive:** Mercedes-Benz diesel engine, type OM 441 LA, 250 kW (340 hp) at 2100 ¹/min to DIN 70020, water-cooled. Pump distribution gearbox with one variable displacement axial piston pump, one axial piston pump with one gear pump and one variable displacement pump with two gear pumps.
- Rope drums:** 2 rope drums are standard – hoist 1 and boom hoist. The drums are driven by hydraulic motors through closed planetary gear units running in oil bath. Spring-applied, hydraulically released multi-disk brakes for all rope drums and wear-free hydraulic braking for load lowering.
- Slew system:** Powered by hydraulic motor through closed planetary gear unit running in oil bath. Spring-applied, hydraulically released holding brake and wear-free hydraulic braking.
- Control:** Electronic proportional valve pilot control.
- Cab:** Steel cab with safety glazing, self-contained heater, controls and instrumentation for travel and crane movements. The cab can be tilted back for improved view, and is swung in front of the superstructure for transportation.

Optional equipment

- Track shoes:** Optional width 1.2 m
- Hoist 2**
- Additional counterweight:** Consisting of 66,100 lb (2 x 33,050 lb) counterweight and 66,100 lb (2 x 33,050 lb) central ballast.
- Self-assembly of basic machine**

Technical description

Boom combinations S, S/L and L

Lattice-type tubular chord structure fabricated of high-strength fine grain structural steel with quick-disconnect pinning.

- SH:** Main boom: foot section 34.4 ft (used to install winch W1), inserts 19.7 ft and 39.4 ft, tapered insert 19.7 ft, boom head 4.9 ft.
Main boom lengths: 59.1-236.2 ft.
- SH/LH (SGL 231.3 ft):** Main boom: same as max. SH, extended by inserts 19.7 ft and 39.4 ft (type 2116), boom top section 24.6 ft.
Main boom lengths: 255.9-295.3 ft.
- SH/LH (SGL 152.6 ft):** Main boom: foot section 34.4 ft (used to install winch W1), inserts 19.7 ft and 39.4 ft, tapered insert 19.7 ft, extended by inserts 19.7 ft and 39.4 ft (type 2116), boom top section 24.6 ft.
Main boom lengths: 177.2-315.0 ft.
- SW:** Main boom: foot section 34.4 ft (used to install winch W1), inserts 19.7 ft and 34.4 ft, tapered insert 19.7 ft, boom head 4.9 ft.
Fly jib: foot section 14.8 ft, inserts 19.7 ft and 39.4 ft, jib top section 24.6 ft.
Main boom lengths: 78.7-196.9 ft.
Fly jib lengths: 59.1-216.5 ft.
- LF:** Main boom S: same as SH.
Main boom S/L (SGL 152.6 ft): same as SH/LH (SGL 152.6 ft).
Fly jib L: foot section 19.7 ft, inserts 39.4 ft, jib top section 19.7 ft.
Main boom lengths: 98.4-236.2 ft for S version.
Main boom lengths: 177.2-275.6 ft for S/L version (SGL 152.6 ft).
Fly jib lengths: 39.4-118.1 ft.
- SSL:** Main boom: foot section 34.4 ft (used to install winch W1), inserts 19.7 ft and 39.4 ft, tapered insert 19.7 ft, boom head 4.9 ft.
Mast 98.4 ft, Superlift counterweight 88,200-352,700 lb.
Additional winch W2 required on mast.
Main boom lengths: 98.4-236.2 ft.
- SSL/LSL (SGL 231.3 ft):** Main boom: same as max. SSL, extended by inserts 19.7 ft and 39.4 ft (type 2116), boom top section 24.6 ft.
Mast 98.4 ft, Superlift counterweight 88,200-352,700 lb.
Additional winch W2 required on mast.
Main boom lengths: 255.9-354.3 ft.
- SWSL:** Main boom: same as SSL.
Fly jib: foot section 14.8 ft, inserts 19.7 ft and 39.4 ft, boom top section 24.6 ft.
Mast 98.4 ft, Superlift counterweight 88,200-132,300 lb.
Additional winches W1 and W2 required on mast and main boom.
Main boom lengths: 98.4-236.2 ft.
Fly jib lengths: 59.1-216.5 ft.
- Safety devices:** Electronic safe load indicator, hoist limit switch, limit switches for boom movements, hydraulic boom backstops, aircraft warning light, anemometer.

The Superlift counterweight is not included in our scope of supply.

Bigge Crane and Rigging Co.

10700 Bigge Avenue
San Leandro, CA 94577
Phone: (888) 337-BIGGE or (510) 638-8100
Fax: (510) 639-4053
Email: info@bigge.com
Web site: www.bigge.com