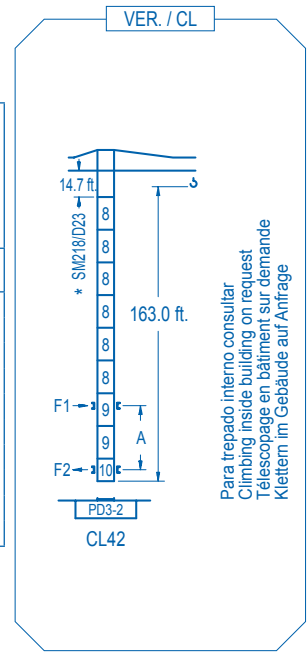


n°	Ref.	□	h
1	D36	8.2	18.0
2	TD36A	8.2	18.0
3	D34	8.2	18.0
4	TD34	8.2	18.0
5	D33	8.2	18.0
6	TD33A	8.2	18.0
7	S35	8.2	18.0
8	D23	6.6	18.0
9	D23A	6.6	18.0
10	CLD23A	6.6	10.2



	5XA73	10XA83
A max	168.6	259.8
B max	- 108.3	- 108.3
C max	154.9	154.9
H max	98.6	126.4

	ES73	ES43	ES63	ES83
A max	162.7	180.8	216.9	271.0
B max	108.3	108.3	108.3	108.3
C max	154.9	154.9	154.9	154.9
H max	317.6	425.9	335.6	443.9

R. máx.	En servicio In operation En service In Betrieb	5XR73.....279,540 lbs. 10XR83.....273,810 lbs.	R. máx.	Fuera de servicio Out of service Hors service Ausser Betrieb	5XR73.....252,870 lbs. 10XR83.....466,050 lbs.
----------------	---	---	----------------	---	---

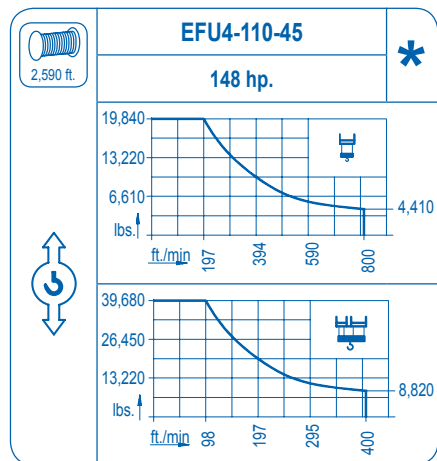
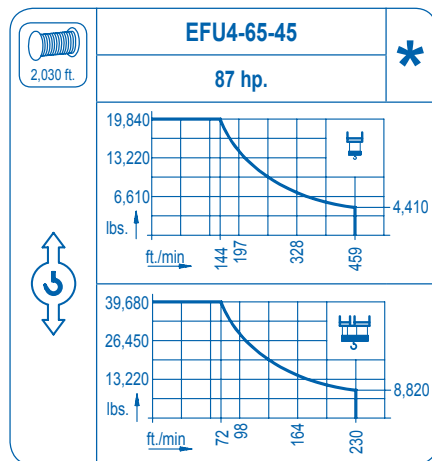
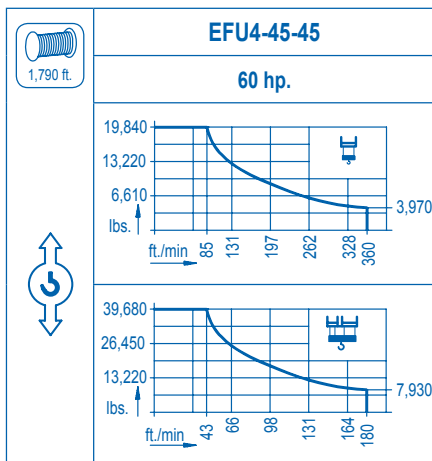
Para otras zonas de viento o alturas superiores consultar
For other wind zones or additional hook heights on request
Pour d'autres zones de vent ou des hauteurs supplémentaires sur demande
Für andere Windzonen oder weiteren Hakenhöhen auf Anfrage

CFU-7.5
10 hp.
0 ⇄ 308 ft./min

GR-12
4 x 88 ft.lbs.
0 ⇄ 0.7 rpm

TRA-7.5 **TRA-10**
2 x 55 ft.lbs. 2 x 74 ft.lbs.
0 ⇄ 78 ft./min
5XR73 10XR83

*** TRA-7.5VC** **TRA-10VC**
2 x 55 ft.lbs 2 x 74 ft.lbs.
0 ⇄ 78 ft./min
5XR73 10XR83



Tensión de alimentación Operating voltage Tension de service Betriebsspannung	480 V 3 ph 60 Hz
--	------------------------

Opcional Optional En option Kaufoption	*
---	---

LINDEN COMANSA
Construcciones Metálicas COMANSA S. A.

Tel.: (34) 948 335 020
Fax: (34) 948 330 810
e-mail: info@comansa.com
www.comansa.com
Polígono Urbizkain
E-31620 HUARTE-PAMPLONA.- SPAIN

DS.1003.04	01/10	21 LC 400	39,680 lbs.
------------	-------	-----------	-------------