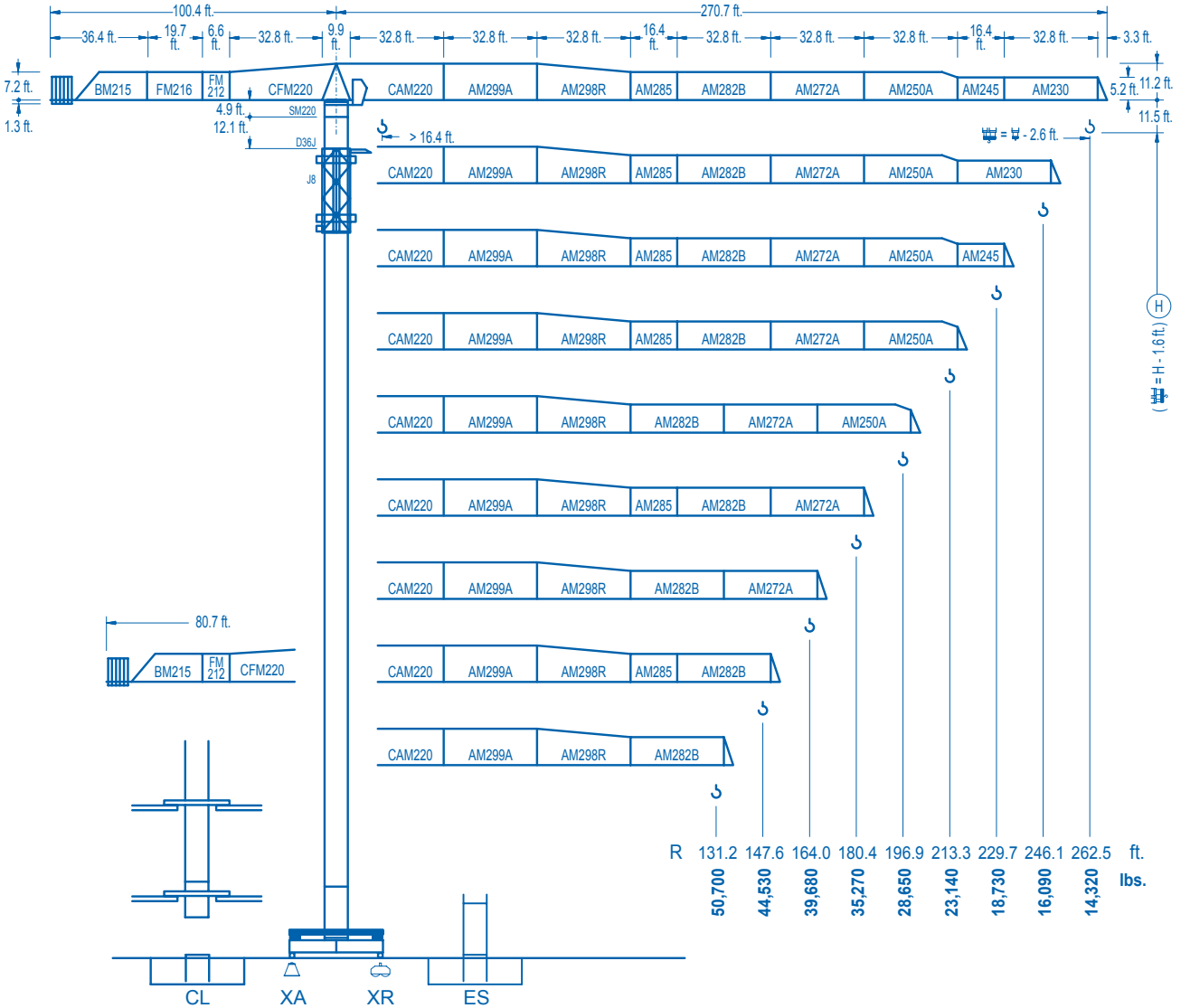


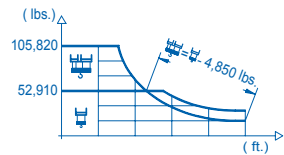
LINDEN COMANSA

LINDEN 2100 21 LC 750 105,820 lbs.

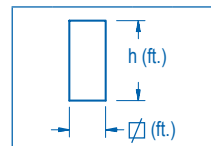
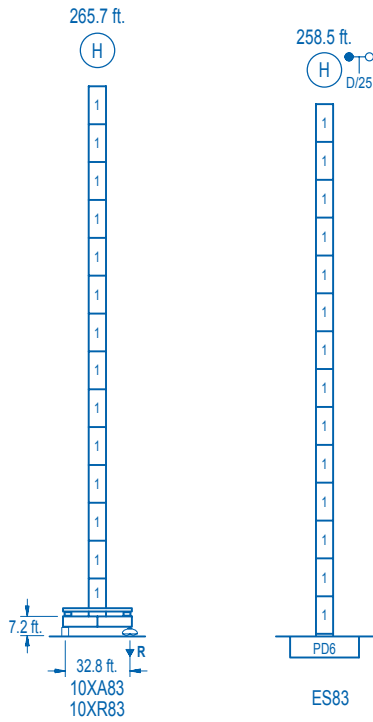


CE EN 14439 (C/25)

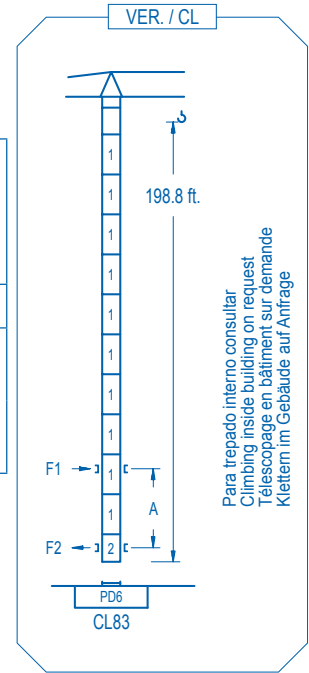
R (ft.)	W														T																									
262.5	48.2	55.8	62.3	65.6	72.2	84.3	89.2	105.0	114.8	124.7	131.2	147.6	164.0	180.4	196.9	213.3	229.7	246.1	262.5	ft.	105,820	88,250	77,000	72,280	64,240	52,910	52,910	43,840	39,500	35,910	33,810	29,400	25,920	23,080	20,740	18,760	17,060	15,600	14,320	lbs.
246.1	48.9	55.8	62.3	65.6	72.2	86.0	91.2	105.0	114.8	124.7	131.2	147.6	164.0	180.4	196.9	213.3	229.7	246.1		ft.	105,820	90,190	78,700	73,890	65,690	52,910	52,910	45,010	40,580	36,880	34,740	30,240	26,670	23,760	21,340	19,310	17,590	16,090		lbs.
229.7	50.9	55.8	62.3	65.6	72.2	89.6	95.8	105.0	114.8	124.7	131.2	147.6	164.0	180.4	196.9	213.3	229.7			ft.	105,820	94,840	82,820	77,800	69,200	52,910	52,910	47,590	42,940	39,040	36,790	32,050	28,280	25,220	22,700	20,560	18,730			lbs.
213.3	55.4	62.3	65.6	72.2	82.0	97.8	105.0	114.8	124.7	131.2	147.6	164.0	180.4	196.9	213.3					ft.	105,820	91,750	86,240	76,830	65,710	52,910	52,910	47,830	43,540	41,040	35,820	31,680	28,300	25,500	23,140					lbs.
196.9	60.4	65.6	72.2	82.0	95.1	107.0	115.8	124.7	131.2	147.6	164.0	180.4	196.9							ft.	105,820	95,720	85,400	73,190	61,060	52,910	52,910	48,610	45,850	40,070	35,470	31,740	28,650							lbs.
180.4	65.3	72.2	82.0	95.1	105.0	116.1	126.3	131.2	147.6	164.0	180.4									ft.	105,820	94,090	80,770	67,540	59,890	52,910	52,910	50,740	44,400	39,370	35,270									lbs.
164.0	65.6	72.2	82.0	95.1	105.0	116.5	127.3	131.2	147.6	164.0										ft.	105,820	94,440	81,080	67,810	60,140	52,910	52,910	51,140	44,750	39,680										lbs.
147.6	65.0	72.2	82.0	95.1	105.0	115.5	127.0	131.2	147.6											ft.	105,820	93,560	80,310	67,150	59,540	52,910	52,910	50,880	44,530											lbs.
131.2	64.6	72.2	82.0	95.1	105.0	114.5	126.3	131.2												ft.	105,820	92,740	79,600	66,530	58,990	52,910	52,910	50,700												lbs.



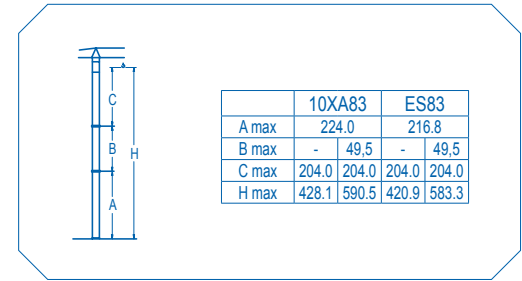
DS.1002.06 11/09 Reserva de modificaciones. Subject to modifications. Modifications réservées. Konstruktionsänderungen vorbehalten.



n°	Ref.	w (ft.)	h (ft.)
1	D36	8.2	18.0
2	CLD36	8.2	12.4



Para trepado interno consultar
Climbing inside building on request
Telescopage en bâtiment sur demande
Klettern im Gebäude auf Anfrage



	10XA83	ES83
A max	224.0	216.8
B max	-	49.5
C max	204.0	204.0
H max	428.1	590.5

R. máx.	En servicio In operation En service In Betrieb	10XR83...376,050 lbs.	R. máx.	Fuera de servicio Out of service Hors service Ausser Betrieb	10XR83...356,710 lbs.

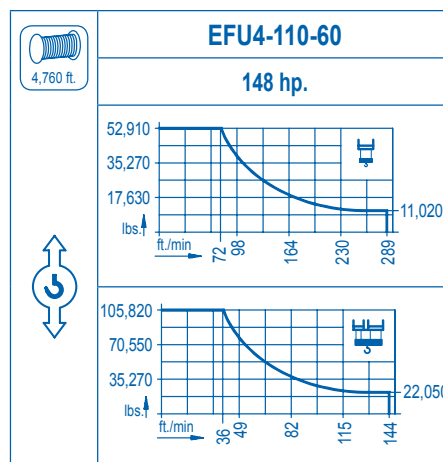
Para otras zonas de viento o alturas superiores consultar
For other wind zones or additional hook heights on request
Pour d'autres zones de vent ou des hauteurs supplémentaires sur demande
Für andere Windzonen oder weiteren Hakenhöhen auf Anfrage

	CFU-13 17.4 hp.
0 ⇄ 246 ft./min	

	GR-14 4 x 103 ft.lbs.
0 ⇄ 0.8 rpm	

	TRA-10 2 x 74 ft.lbs.
0 ⇄ 78 ft./min	

	TRA-10VC 2 x 74 ft.lbs.	*
0 ⇄ 78 ft./min		



Tensión de alimentación Operating voltage Tension de service Betriebsspannung	480 V 3 ph 60 Hz
----------------------------------------------------------------------------------------	------------------------

Opcional Optional En option Kaufoption	*
-------------------------------------------------	----------

LINDEN COMANSA
Construcciones Metálicas COMANSA S. A.

Tel.: (34) 948 335 020
Fax: (34) 948 330 810
e-mail: info@comansa.com
www.comansa.com

Polígono Urbizkain
E-31620 HUARTE-PAMPLONA.- SPAIN

DS.1002.06	01/10	21 LC 750	105,820 lbs.
------------	-------	------------------	--------------