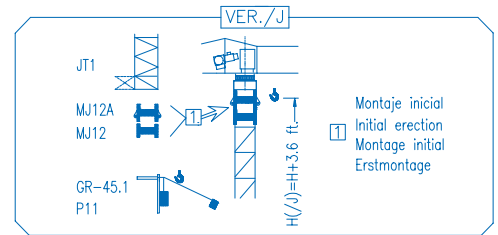
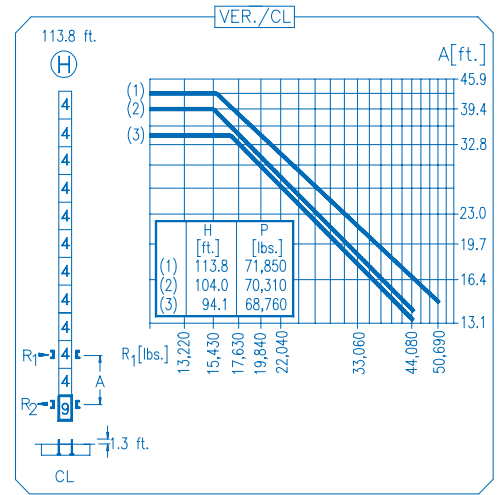


N	Ref.	h
1	MT123	33.1 ft.
2	MH124A	38.7 ft.
3	MH124-1	38.7 ft.
4	MH121	9.4 ft.
9	CL20	7.2 ft.

MH124=(4)MH121-0.6 ft.

H=H+0.6 ft.
 H=H
 H=H
 H=H-0.6 ft.



R. máx.	En servicio	XR0H 95,240 lbs.
	In operation	
	En service	
	In Betrieb	
	XR2H 93,480 lbs.	
	XR3H ... 106,260 lbs.	

R. máx.	Fuera de servicio	XR0H 106,700 lbs.
	Out of service	
	Hors service	
	Ausser Betrieb	
	XR2H 126,100 lbs.	
	XR3H 171,740 lbs.	

CS2-1.9

3 hp.

63 ft./min
189 ft./min

CFU-2.2

3 hp.

0 ↻ 262 ft./min

GR-9.0

66 ft.lbs.

0 ↻ 0.9 rpm

TS2-3.0	TS2-4.5	TS2-5.5
2x22 ft.lbs.	2x33 ft.lbs.	2x40 ft.lbs.
0 ↻ 78 ft./min		
XR0H	XR2H	XR3H

ES3-13-10

21 hp.

	I	II	III
	ft./min 30	118	236
	lbs. 4,410	4,410	2,425
	ft./min 15	59	118
	lbs. 8,820	8,820	4,850

ES3-18-10

29 hp.

	I	II	III
	ft./min 39	150	299
	lbs. 4,410	4,410	2,425
	ft./min 20	75	150
	lbs. 8,820	8,820	4,850

EFU2-11-10

15 hp.

820 ft.

EFU2-18-10

24 hp.

820 ft.

Tensión de alimentación	480 V
Operating voltage	3 ph
Tension de service	60 Hz
Betriebsspannung	

Optional
Optional
En option
Kaufoption

COMANSA

Construcciones Metálicas COMANSA S. A.

Tel.: (34) 948 335 020
Fax: (34) 948 330 810
e-mail: info@comansa.com
www.comansa.com

Polígono Urbizkain
E-31620 HUARTE-PAMPLONA.- SPAIN

DS.0551.18	12/05	5 LC 5010 8,820 lbs.
-------------------	-------	-----------------------------

