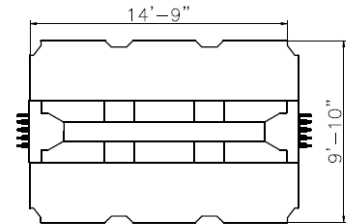
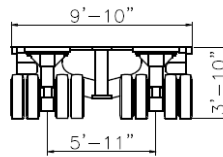
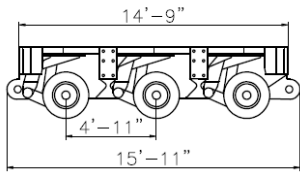


Heavy-Duty - Module Type THP/SL 3

Main Features

- Module longitudinally and laterally combinable
- Box-section center beam with integrated air and hydraulic fluid reservoirs
- Front and rear optimized bolt-plate-coupling for longitudinal combinations
- 2 dual tired pendular axles with a total of 8 tires per axle line
- Wheel sets mounted to the frame by ball bearing race rings
- All wheel sets equipped with hydraulic suspension stroke $\pm 11^{13}/_{16}$ " hydro-pneumatic gas accumulator suspension and hose rupture safety valves
- Hydro-mechanical 2-circuit all-wheel force-steering integrated into the bogie, with maximum wheel set steering angle of $\pm 55^\circ$, including counter-steering
- 2-line all-wheel air service brake and spring-loaded parking brake



Technical Data

Speed		3 mph	30 mph	50 mph
Technical axle load per axle line		74.960 lbs	40.570 lbs	36.160 lbs
Deadweight (without accessories)	approx.	21.830 lbs	21.830 lbs	21.830 lbs
Maximum payload	approx.	203.050 lbs	99.880 lbs	86.650 lbs
Tires		215/75 R 17.5		

* For reference only. Contact your Bigge representative for additional information.