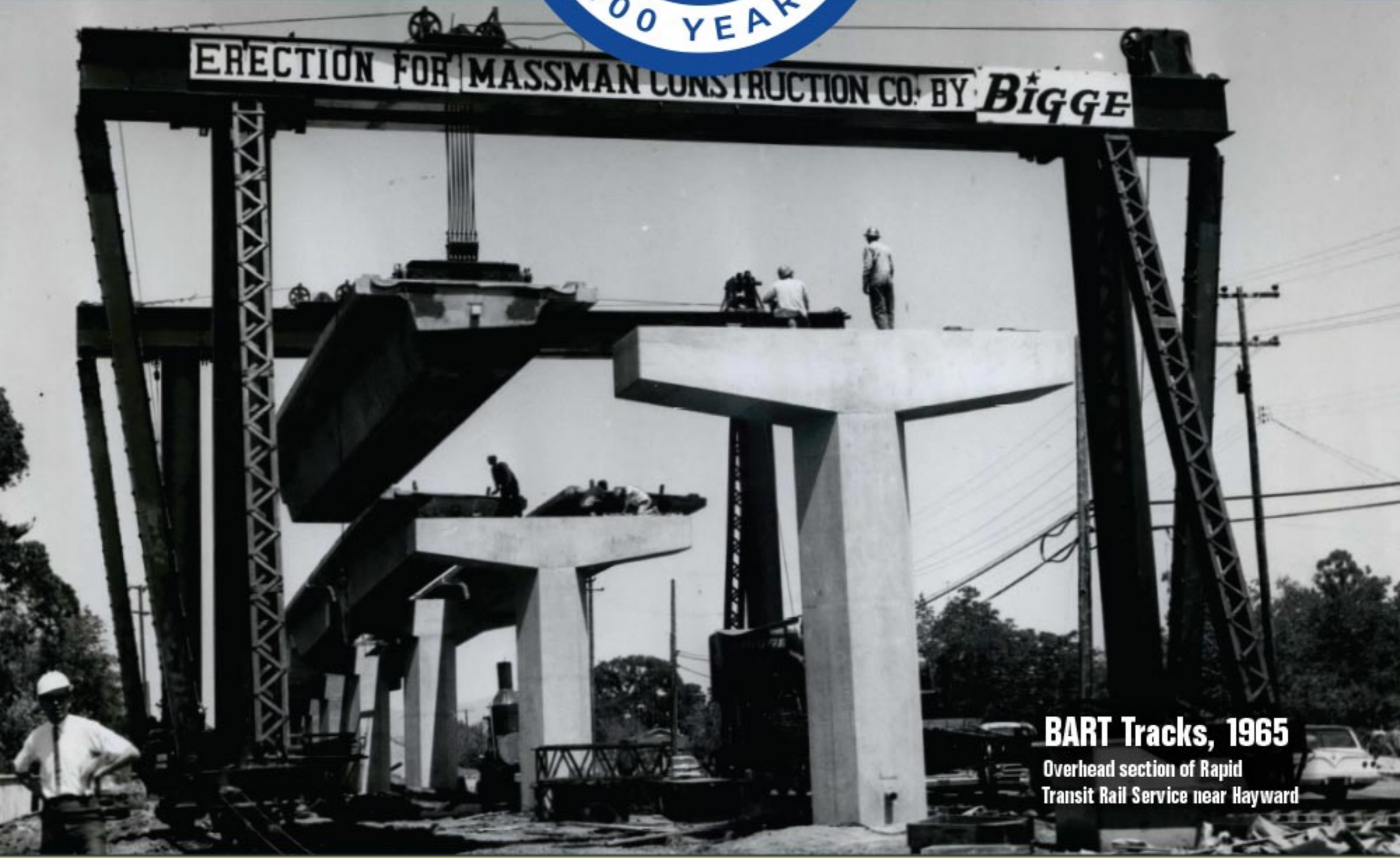


1961



1970



BART Tracks, 1965
Overhead section of Rapid Transit Rail Service near Hayward

Planes, Trains & Transport

Bigge Terminal
Bigge yard and office located in Oroville, CA



1962
Tidewater Oil
Vessel move to Tidewater Oil, Avon



S.F. International Airport
Hauling and erecting jetways for Pacific Iron & Steel Corp.

1963

Conseco
Hauling pressure vessel – San Leandro, CA



USAF Display Rocket
Display rocket hauled around country for UTC



How 'Moblengineering' solves super-size hauling-rigging problems



Advertising
Mobile engineering ad in Dana Digest

1964



Retirement Dinner Party For Fred Fredrickson



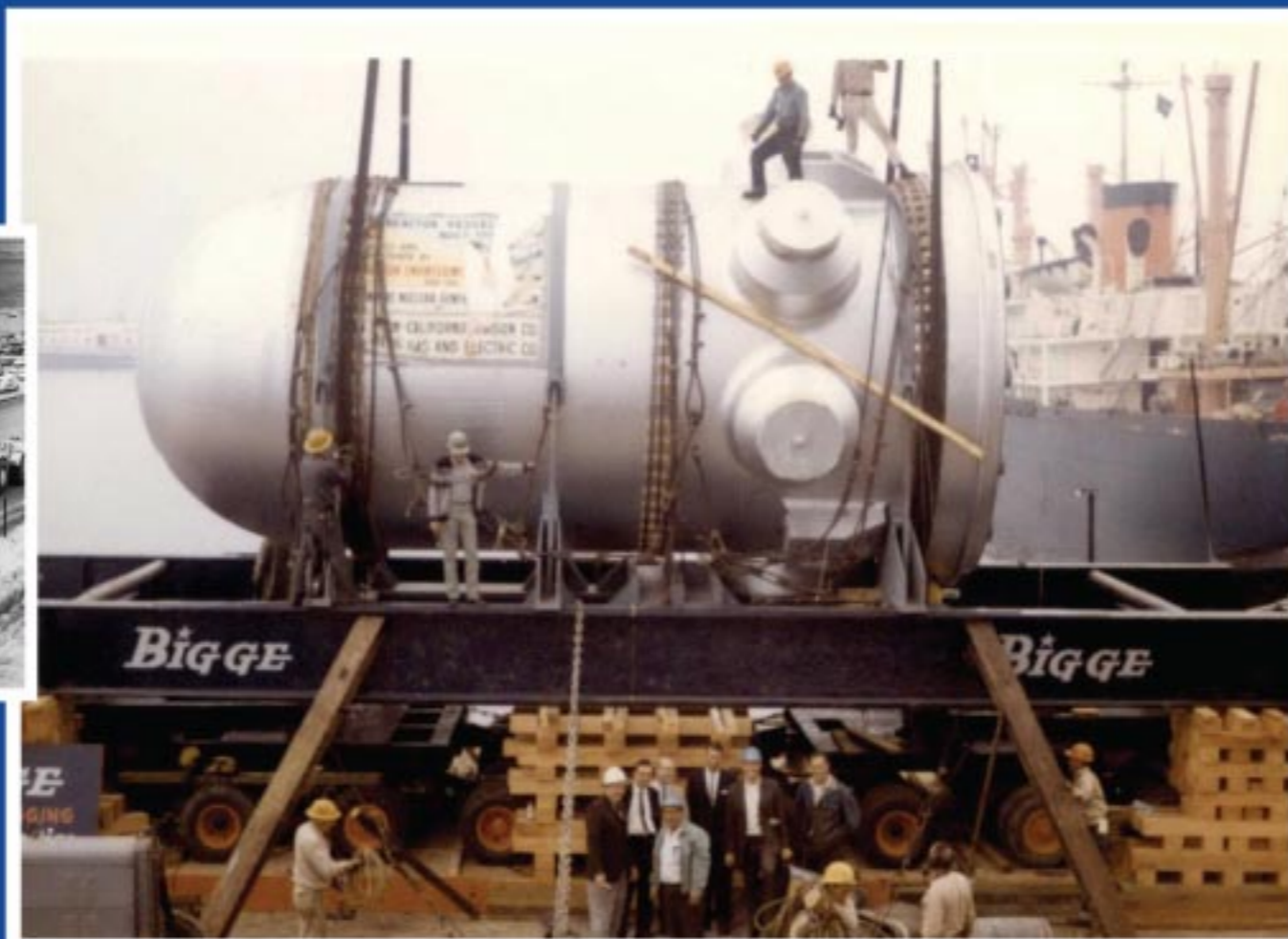
Bay Area Hauling Chinese Junk to Lake Tahoe

1965

SONGS Reactor
With Brock Settlemier

Standard Oil Co.
Assembly of Isonax reactors in Richmond

Westinghouse Reactor
Reactor move – San Onofre, CA



1961



1970

1968

First Generation Transport
Diablo Canyon Reactor, CA



Nuclear Plant
Palisades, Michigan



1969

Morning News
Growth of Bigge

Bigge Drayage Company
From One Truck To 500 Units

The Bigge reputation for...
Yesterday... Today

200411 - Bigge's new units, all built at the Oakland office.

Bigge
HEAVY HAULING, LOGGING, CONSTRUCTION, TRANSPORTATION, CRANE AND RIGGING CO.

Bigge Brochure

No move is too big for Bigge.

If you've got to move very heavy...
Bigge...
Bigge CRANE and RIGGING CO.
HEAVY HAULING SERVICES
10700 Bigge Street P.O. Box 1087 San Leandro, CA 94577

STATE OF CALIFORNIA
EXECUTIVE DEPARTMENT

Know All Men By These Presents:

That I, EDMUND G. BROWN, Governor of the State of California, do hereby appoint

HENRY W. BIGGE

Member, Governor's Committee on Traffic Safety

In Witness Whereof, I have hereunto set my hand and caused the Great Seal of the State to be affixed at Sacramento, this thirteenth day of January nineteen hundred and sixty-six.



Edmund G. Brown
Governor of the State of California
Henry W. Bigge
Member, Governor's Committee on Traffic Safety

76-Ton Section of BART Tube



BIGGE INGENUITY plus MANITOWOC 3900T VERSATILITY

... install 76-ton BART Tube boring shield 40' below street level... with 1" clearance.

MANITOWOC
LIFT RINGER... with ONE CRANE!
TOWER
MANITOWOC ENGINEERING CO.
MANITOWOC, WISCONSIN 54220

Shiga Recovery Ad

HOW COULD YOU TURN THIS...



into \$19,000,000?

HERE'S HOW
with Air International Recovery Equipment

SAFE RECOVERY MEANS A SAVINGS OF \$18,700,000

Last revenue - 12 mos.	\$18,000,000
Replacement cost	8,500,000
Gross savings	26,500,000
Less:	
Cost of recovery, repair	3,000,000
Last revenue - 90 days	4,500,000
Net savings	\$18,700,000



Caption No. 3 (Photo 11416F-20)
The third lift point was immediately forward of the tail assembly. Bigge riggers adjust where ailing and through impossible wet the base of the San Mateo bridge shows, which Shiga barely cleared by the narrowest.

Japan Airlines
Shiga recovery

Salt Palace
Salt Lake City



1970

Diablo Canyon Haul
Transport of nuclear reactor



Planes, Trains & Transport