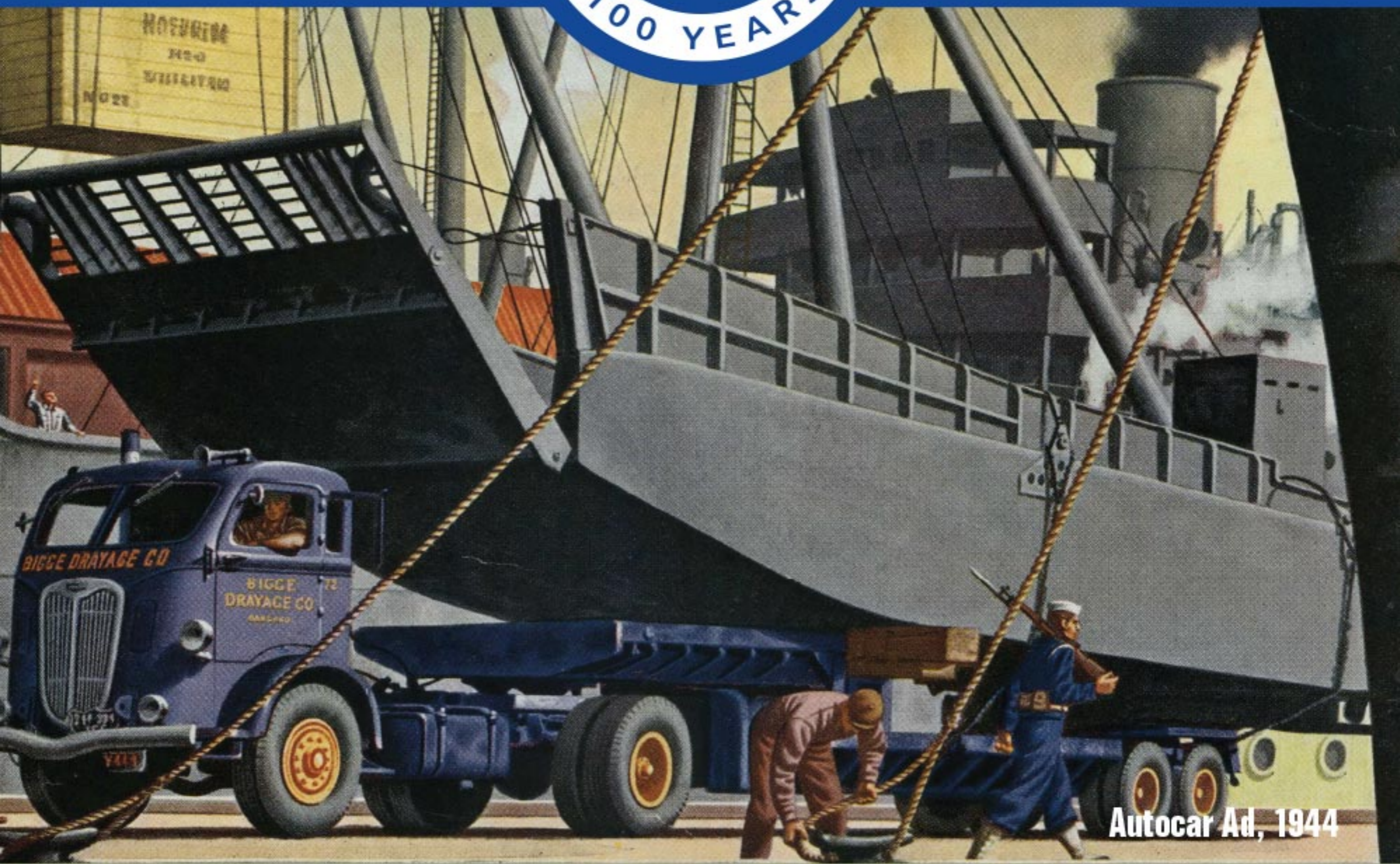


1941



1950



Autocar Ad, 1944

The War Years

1941

Fleet Expansion

Bigge adds three new DU100T-153" Wheelbase Autocars to their fleet

Henry W. Bigge



1942

U.S. Naval Invasion Craft

Unloading invasion craft using portable A-frame to transport to Bigge yard for hauling to Albany



Hauling U.S. Navy Barge



70-Ton Transformer Haul

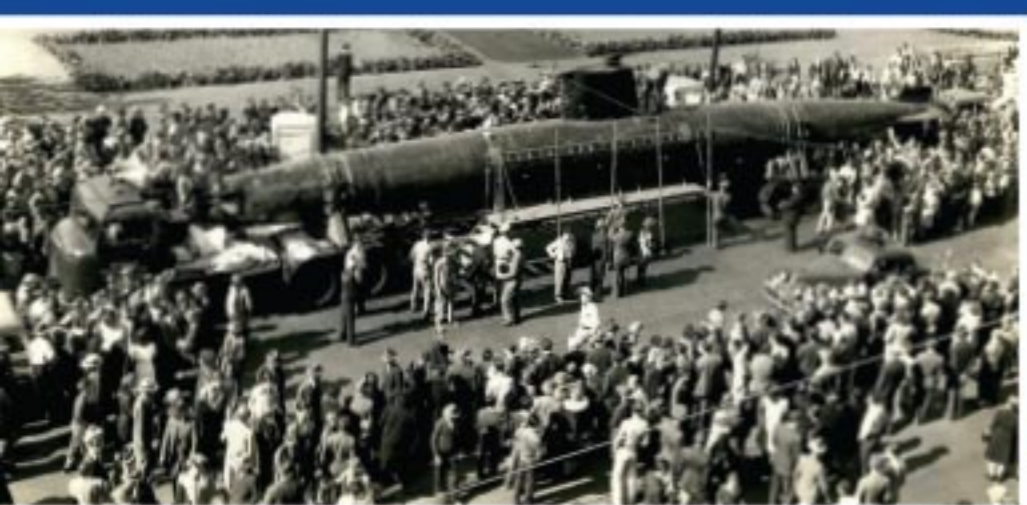
Moving a 70-ton transformer from Southern Pacific Railroad, Selby, CA to PG&E Steam Plant, Oleum, CA



1941



1950



U.S. Treasury Department
Touring the U.S. with captured two-man Japanese submarine

1943

Captured Japanese Submarine
War Bond Tour Across U.S.



Moore Dry Dock
Hauling boiler for Victory Ship, West Oakland Yard

Golden Gate Bridge
Retrofit work



Hauling Navy Barges
1 of 100's of barges hauled from Independent Iron Works to Cryer Boat Works

STEPPING-STONES TO TOKYO

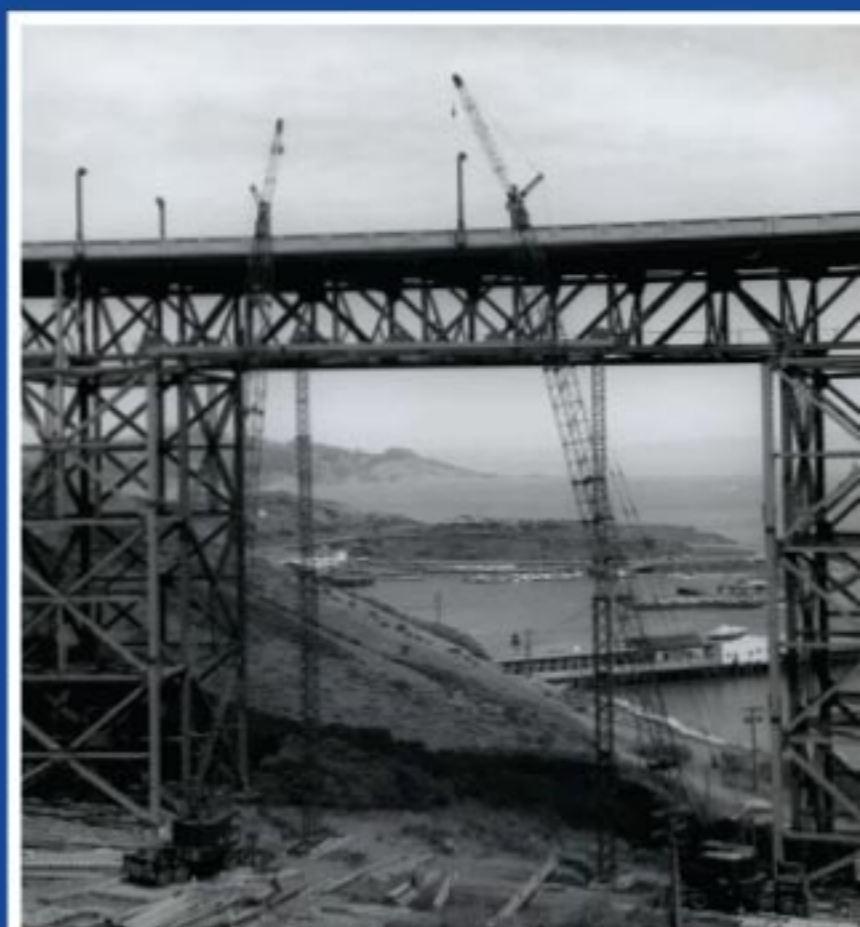
Invasion barges, 55 feet long, 14 feet wide, and weighing 20 tons, are hauled from their place of manufacture to the Pacific Coast waterfront by sturdy, dependable, Autocar tractors coupled to specially designed trailers.

Bigge Drayage Company, of Oakland, California, has already hauled an indefinite number of these "stepping-stones to Tokyo," and will haul many thousands more before the job is done. Because they must meet an inflexible delivery schedule, they are hauled by Autocars—the trucks that can be depended upon to do heavy-duty work and do it unflinchingly, day after day, week after week, year after year.

Such heavy-duty hauling jobs as this, unusual in today's business world, may be comparatively commonplace in the Heavy-Duty Age that will be ushered in when ocean routes...

By Government authorization, a limited number of heavy-duty chassis are NOW being built by Autocar for essential civilian hauling. Your local Autocar Factory Branch will be glad to help you file your applications with the COT for the purchase of one or more of these new trucks.

AUTOCAR
FOR HEAVY DUTY
Manufactured in Ardmore, Pa. Dist. Factory Branches in Principal Cities



Tressel Assembly
Richmond Ship Yard

Autocar Ad

Down to the Sea in AUTOCARS!

Autocar Trucks are the best for the heavy work of the waterfront. They are built to last, and they are built to haul. They are built to haul the heavy loads of the waterfront. They are built to haul the heavy loads of the waterfront. They are built to haul the heavy loads of the waterfront.

AUTOCAR
FOR HEAVY DUTY



1944



Hauling Navy Boat
First use of Bigge-branded equipment



Overpass Removal
3rd Street - San Francisco, CA

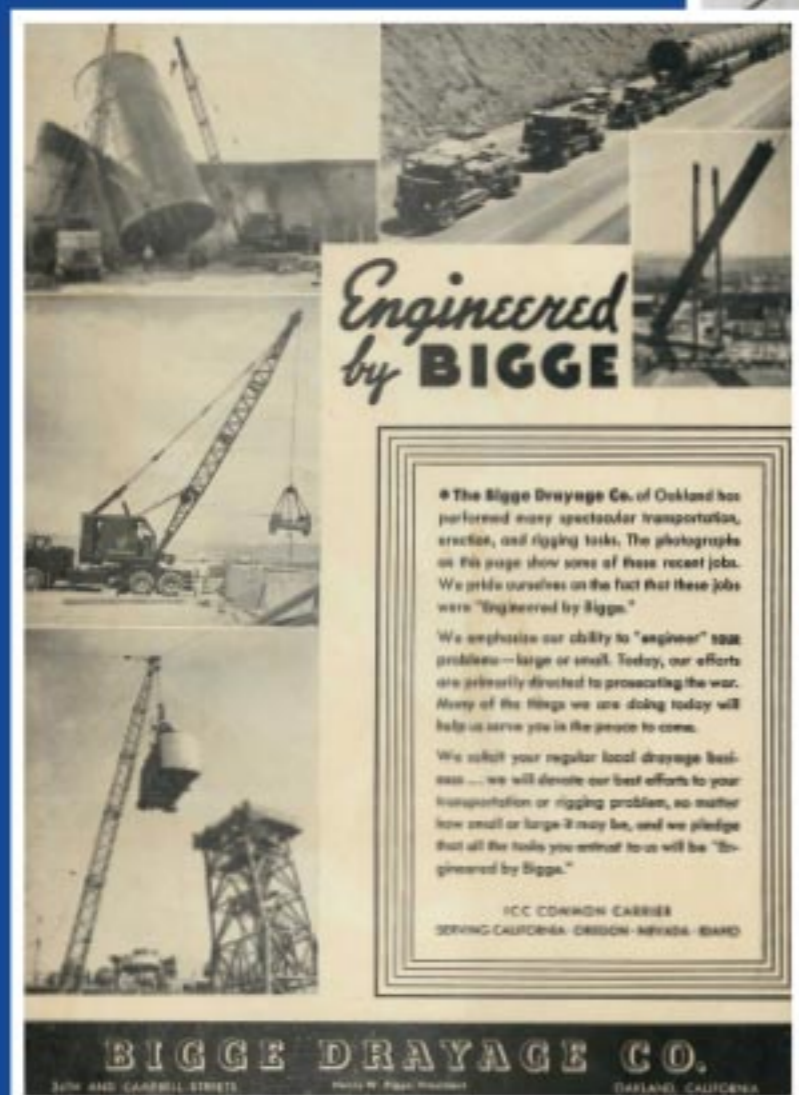
The War Years

1941

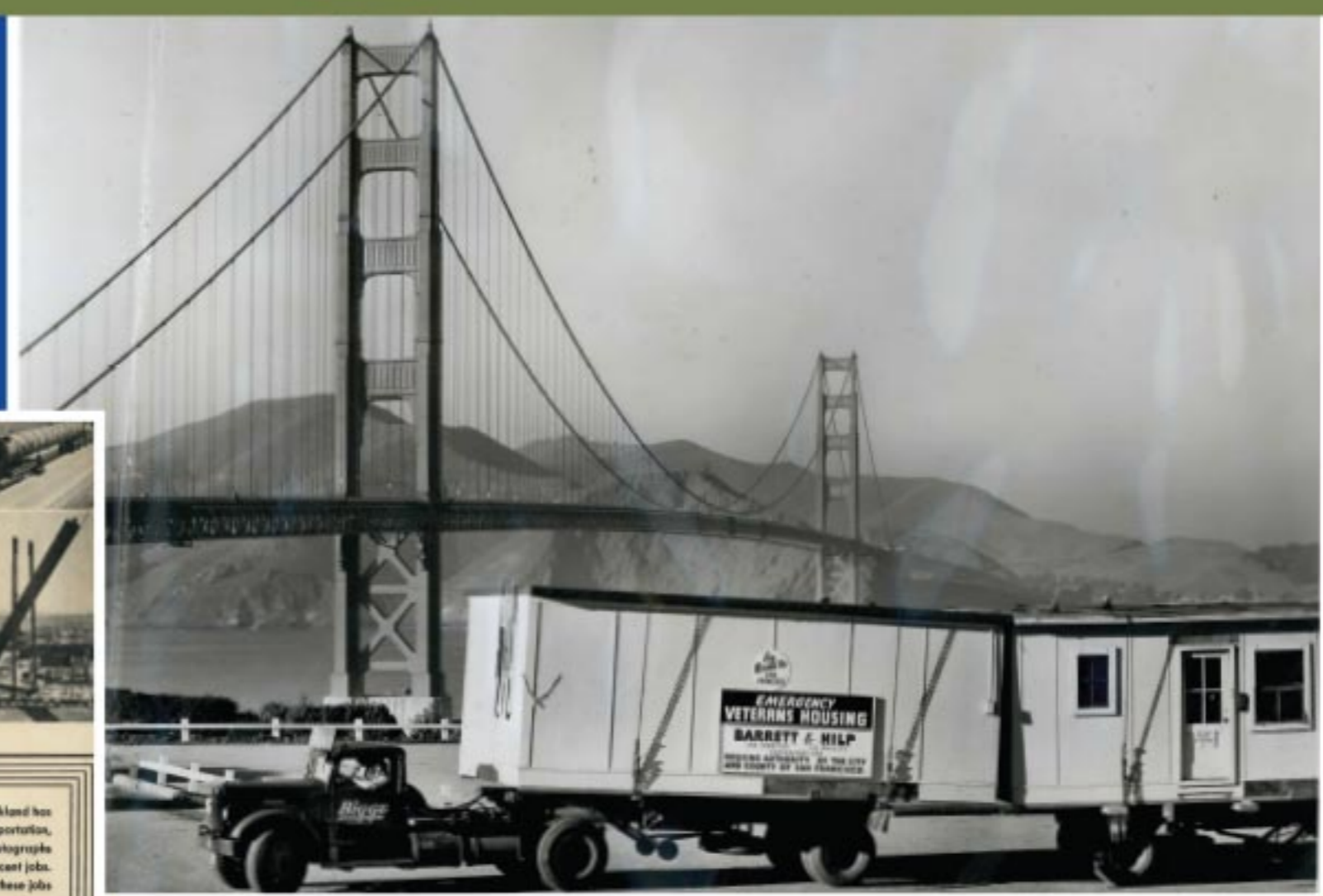


1950

1946



Bigge Advertisement



Emergency Veterans Housing

1947

Shrine Circus

Hauling elephants to Shrine Circus – San Francisco, CA

Toluene Cracking Tower



Placing Tanks for Key System
Oakland, CA



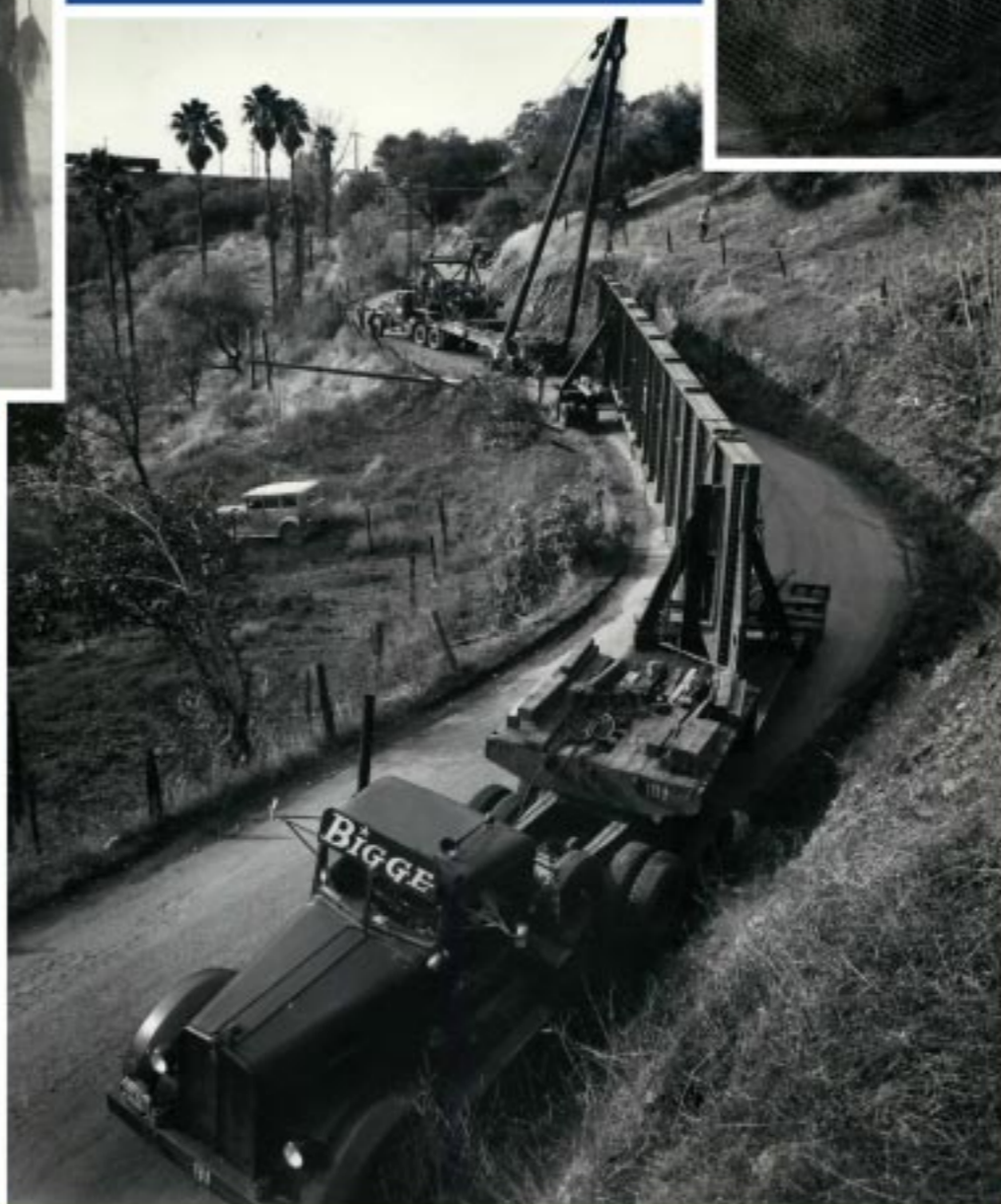
U.S. Navy Quonset Hut



Canal Trimmer



Hauling Bridge Girder



The War Years

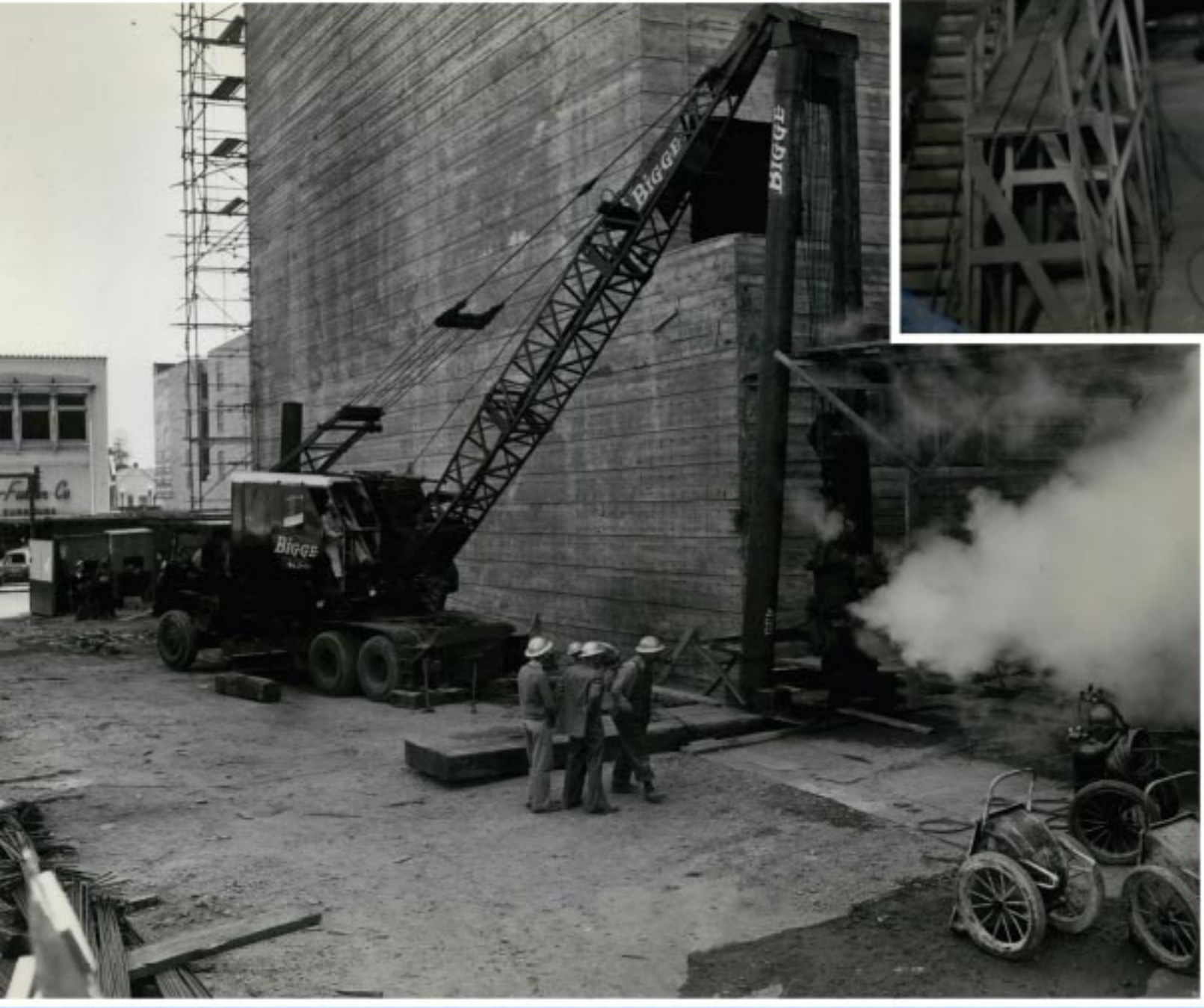
1941



1950

1948

Steam Powered Pile Extraction
Anglo Bank – Oakland, CA



Pan American Airways
Putting motors in Clipper Ships
at Treasure Island

1949

Bigge Safety Awards Dinner



1950

Parkmerced Tower
San Francisco, CA

The War Years