



## AMERICAN HC 60 Hydraulic Crawler Crane



### FEATURES

- 60 tons (54.4 mt) max lift capacity
- 160 ft. (48.8 m) max lift crane boom length
- 130+40 ft. (39.6+12.2 m) max lift crane boom & jib length
- Power up/down and freefall on main, auxiliary and optional third drum
- 32,400 lbs. (14 697 kg) max single line pull, 500 fpm (153 mpm) max line speed
- Swing speed 3.5 rpm
- Quiet, comfortable operator's cab with excellent viewing range
- Wet type multi-disc, spring set, hydraulically released parking brake for safe, easy control and maintenance
- Variable displacement axial piston hydraulic motor for both main and auxiliary drum drive
- Superior transportability:  
10 ft. 10 in. (3.3 m) width  
10 ft. 8 in. (3.25 m) height
- 64,720 lbs. (29 357 kg) transport weight including sideframes and boom inner
- Hydraulic counterweight removal system simplifies installation and removal

simple, available and  
cost effective™

Machines shown may have optional equipment.



## AMERICAN HC 60

### Hydraulic Crawler Crane

Max. Lifting Capacity:  
60 tons (54.4 mt)

#### 160 ft. (48.8 m) MAXIMUM LIFT CRANE BOOM

- 46HI angle chord boom, pin connected.
- 20 ft. (6.1 m) inner and outer and 10/20 /40 ft. (3/6/12 m) available inserts provide boom compositions in 10 ft. (3 m) increments from 40 ft. (12.2 m) basic boom to 160 ft. (48.8 m).

#### ROBUST ENGINE

- 197 BHP @2100 RPM Cummins 6BTA5.9 turbocharged aftercooled diesel engine, 4 cycle, 6 cylinders. Fuel tank capacity is 60 gal. (227 l)

#### ENVIRONMENTAL OPERATOR'S CAB

- Designed to provide excellent viewing range and quiet, comfortable operation.
- 37 in. (.94 m) wide cab has panoramic window.
- Easy-to-operate modular and ergonomically designed controls minimize operator fatigue and increase productivity.
- Load Moment Indicator with interactive screen. Operator can select from three display modes: loaded condition diagram, rated lifting curve, and rated lifting load table.
- Adjustable operator's seat, radio, air conditioner, overhead window, sun visor, fan, overhead and front wipers, and drum rotation indicators standard.

#### HEAVY DUTY CARBODY AND CRAWLERS

- Fabricated steel carbody is deep box constructed with square axles for the crawler side frames. Precision machined top supports anti-friction



Environmental operator's cab

- swing circle and multiple pass hydraulic swivel joint.
- Crawlers have high alloy steel tumbler yokes and rigid fabricated structures with sealed rollers.
- 30" (762 mm) crawler shoes.
- Travel mechanism is set within shoe width.
- Side frames extended or retracted by cylinders inside the carbody.
- 1 mph (1.6 km/h) travel speed.
- 40% (22°) gradeability.

#### POWERFUL, HIGH-SPEED HOIST SYSTEM

- Identical inline, independent main and auxiliary load hoisting drums are grooved for 7/8 in. (22.4 mm) diameter rope. Maximum line speed is 500 fpm (153 mpm), maximum line pull, 32,400 lbs. (14 697 kg).
- Each drum, including optional third, has power up/down and freefall. Load hoists are further controllable in stepless mode.
- Ample work space in front of drums allows easy access for cable installation and maintenance.
- External contracting brake.
- Internal expanding band clutch.

#### HIGH CAPACITY, DEPENDABLE HYDRAULIC SYSTEM

- Open circuit system has 2 variable displacement piston pumps with system capacity of 116 gpm (440 lpm)
- Hydraulic reservoir with 79 gal. (300 l) capacity and 10 micron filtration.



Hydraulic removable counterweight system

- Component working range is between -4 and 195° F (-20 and 90° C).
- Flip up doors provide easy access to engine and hydraulic components for service.

#### TWO PIECE REMOVABLE COUNTERWEIGHT

- Two piece pin connected counterweight can be assembled or disassembled easily within minutes – 17,000 lb. (7711 kg) outside piece and 22,000 lb. (9979 kg) inside piece for a total weight of 39,000 lbs. (17 690 kg).
- Hydraulic counterweight removal system is standard and utilizes the "A" frame and crane boom hoist drum to make the HC 60 one of the most transportable cranes in its class.
- Moves on three trucks with full boom and #9 jib. Upper, carbody, sideframes and boom inner weigh under 65,000 lbs. (29 484 kg).
- The HC 60 can be transported on one truck with reduced counterweight and folding boom option, utilizing a boom dolly. Total load weighs under 95,000 lbs. (43 091 kg).

#### OPTIONS INCLUDE:

- Third drum.
- Automotive type lights.
- Hydraulic power take off.
- Jib and jib inserts.
- Folding boom.
- 36" (914 mm) crawler shoes.
- Single sheave boom tip extension.
- Dragline.

For more information, product demonstration, or details on purchase, lease and rental plans, please contact your local Terex Cranes Distributor.

We reserve the right to amend these specifications at any time without notice. The only warranty applicable is our standard written warranty applicable to the particular product and sale. We make no other warranty, expressed or implied.

 **TEREX CRANES**

AMERICAN CRANE CORPORATION  
202 Raleigh Street  
Wilmington, NC 28412 USA  
(910) 395-8500 • FAX: (910) 395-8538  
E-mail: american@american-crane.com

[www.terexlift.com](http://www.terexlift.com)





# AMERICAN HC 60

## Hydraulic Crawler Crane 46 HI Boom

### LIFT RATINGS IN POUNDS

With 46HI Angle Boom, 4 Sheave Tip, 39,000 Pound Counterweight

Boom Length	Radius (Feet)	Boom Angle (Degrees)	Side Frames Extended (Pounds)	From Boom Pt. to Ground (Feet)	Boom Length	Radius (Feet)	Boom Angle (Degrees)	Side Frames Extended (Pounds)	From Boom Pt. to Ground (Feet)	Boom Length	Radius (Feet)	Boom Angle (Degrees)	Side Frames Extended (Pounds)	From Boom Pt. to Ground (Feet)
40' (12.2M)	10	80.3	120,000*	45	90' (con't)	45	62.4	18,820	85	120' (con't)	90	43.7	6,350	88
	12	77.4	120,000*	44		50	58.7	16,290	82		95	40.2	5,770	83
	15	73.0	93,390	44		55	54.9	14,290	79		100	36.3	5,260	76
	20	65.3	59,020	42		60	50.9	12,650	75		105	32.0	4,800	69
	25	57.1	42,780	39		65	46.7	11,300	71		110	27.2	4,380	60
	30	48.1	33,370	35		70	42.2	10,160	66		115	21.4	4,020	49
	35	37.5	27,190	30		75	37.2	9,180	60		120	13.4	3,680	33
	40	23.4	22,840	21		80	31.5	8,330	52		130' (39.6M)	24	80.8	43,780
50' (15.2M)	12	80.0	120,000*	55	85	24.8	7,610	43	25	80.4		41,220	134	
	15	76.4	93,310	54	90	15.5	6,970	29	30	78.1		31,830	133	
	20	70.5	58,910	53	100' (30.5M)	19	81.0	62,850	104	35		75.9	25,570	131
	25	64.2	42,640	50		20	80.4	58,180	104	40		73.6	21,160	130
	30	57.7	33,230	48		25	77.5	41,800	103	45		71.3	18,050	129
	35	50.6	27,040	44		30	74.5	32,400	102	50		68.9	15,520	127
	40	42.7	22,670	39		35	71.5	26,170	100	55		66.6	13,500	125
	45	33.5	19,460	33		40	68.5	21,770	98	60	64.1	11,870	122	
50	20.9	16,960	23	45		65.3	18,630	96	65	61.7	10,500	120		
60' (18.3M)	13	80.7	117,460*	65		50	62.2	16,110	94	70	59.1	9,350	117	
	15	78.7	93,230	64	55	58.9	14,100	91	75	56.5	8,370	114		
	20	73.8	58,800	63	60	55.4	12,460	88	80	53.8	7,520	110		
	25	68.8	42,510	61	65	51.9	11,110	84	85	51.0	6,780	107		
	30	63.6	33,100	59	70	48.2	9,970	80	90	48.2	6,130	102		
	35	58.1	26,890	56	75	44.2	8,980	75	95	45.1	5,550	98		
	40	52.3	22,520	53	80	39.9	8,140	70	100	41.9	5,040	92		
	45	46.0	19,330	49	85	35.2	7,400	63	105	38.5	4,580	86		
	50	38.9	16,820	43	90	29.9	6,750	55	110	34.8	4,160	80		
	55	30.5	14,820	36	95	23.5	6,180	45	115	30.8	3,790	72		
	60	19.0	13,190	25	100	14.7	5,680	31	120	26.1	3,440	63		
	70' (21.3M)	15	80.4	93,100	74	110' (33.5M)	21	80.7	53,840	114	140' (42.7M)	26	80.7	38,920
20		76.2	58,630	73	25		78.6	41,600	113	30		79.0	31,640	143
25		71.9	42,320	72	30		75.9	32,200	112	35		76.9	25,370	142
30		67.6	32,900	70	35		73.2	25,960	111	40		74.8	20,950	141
35		63.0	26,700	68	40		70.5	21,550	109	45		72.7	17,850	139
40		58.4	22,320	65	45		67.7	18,430	107	50		70.5	15,310	137
45		53.4	19,140	62	50		64.9	15,900	105	55		68.3	13,300	136
50		48.1	16,630	58	55		62.0	13,880	102	60		66.1	11,660	133
55		42.4	14,620	53	60		59.0	12,250	100	65		63.8	10,290	131
60		35.9	12,990	46	65		55.9	10,890	96	70		61.5	9,150	128
65		28.1	11,640	38	70		52.7	9,750	93	75		59.2	8,160	126
70		17.6	10,500	27	75		49.3	8,760	89	80		56.8	7,320	123
80' (24.4M)	16	80.8	83,260	84	80	45.8	7,920	84	85	54.3	6,570	119		
	20	77.9	58,520	84	85	42.0	7,180	79	90	51.7	5,920	115		
	25	74.2	42,190	82	90	38.0	6,540	73	95	49.1	5,340	111		
	30	70.5	32,780	81	100	28.5	5,450	58	100	46.3	4,830	107		
	35	66.6	26,560	79	105	22.4	4,990	47	105	43.4	4,360	102		
	40	62.7	22,180	76	110	14.0	4,580	32	110	40.3	3,940	96		
	45	58.6	19,010	74	120' (36.6M)	23	80.5	46,830	124	115	37.1	3,560	90	
	50	54.3	16,500	70		25	79.6	41,420	123	120	33.5	3,220	83	
	55	49.7	14,490	66		30	77.1	32,040	122	125	29.6	2,910	75	
	60	44.8	12,860	62		35	74.7	25,780	121	130	25.2	2,630	65	
	65	39.5	11,510	56		40	72.2	21,370	120	135	19.8	2,360	53	
	70	33.5	10,370	50		45	69.7	18,250	118	140	12.4	1,980*	36	
75	26.3	9,390	41	50		67.1	15,720	116	150' (45.7M)	27	80.9	36,640	154	
80	16.5	8,560	28	55		64.5	13,720	114		30	79.7	31,430	153	
90' (27.4M)	18	80.6	68,630	94		60	61.8	12,070		111	35	77.8	25,150	152
	20	79.3	58,360	94		65	59.0	10,720		108	40	75.8	20,730	151
	25	76.0	41,990	93		70	56.2	9,570		105	45	73.8	17,650	149
	30	72.7	32,580	91		75	53.3	8,580		102	50	71.8	15,110	148
	35	69.4	26,360	90	80	50.3	7,740	98						
	40	65.9	21,960	88	85	47.1	7,010	93						

Form No. HC-60-CR-46HI



**LIFT RATINGS IN POUNDS (continued)**

**With 46HI Angle Boom, 4 Sheave Tip, 39,000 Pound Counterweight**

Boom Length	Radius (Feet)	Boom Angle (Degrees)	Side Frames Extended (Pounds)	From Boom Pt. to Ground (Feet)	Boom Length	Radius (Feet)	Boom Angle (Degrees)	Side Frames Extended (Pounds)	From Boom Pt. to Ground (Feet)	Boom Length	Radius (Feet)	Boom Angle (Degrees)	Side Frames Extended (Pounds)	From Boom Pt. to Ground (Feet)
150' (con't)	55	69.8	13,080	146	150' (con't)	135	28.6	2,120	77	160' (con't)	80	61.3	6,900	146
	60	67.8	11,440	144		140	24.3	1,880	67		85	59.3	6,160	143
	65	65.7	10,080	142		145	19.1	1,660	55		90	57.2	5,500	140
	70	63.6	8,920	140		150	12.0	1,080*	37		95	55.0	4,920	137
	75	61.4	7,940	137		160' (48.8M)	29	80.7	32,830		163	100	52.8	4,400
	80	59.2	7,090	134	30		80.4	31,240	163		105	50.5	3,940	129
	85	57.0	6,340	131	35		78.6	24,960	162		110	48.2	3,520	125
	90	54.7	5,700	128	40		76.7	20,540	161		115	45.7	3,140	120
	95	52.3	5,110	124	45		74.9	17,460	160		120	43.2	2,800	115
	100	49.8	4,600	120	50		73.0	14,920	158		125	40.5	2,470	109
	105	47.3	4,130	116	55		71.1	12,900	157		130	37.6	2,180	103
	110	44.7	3,710	111	60		69.2	11,250	155		135	34.6	1,920	96
	115	41.9	3,340	106	65		67.3	9,880	153		140	31.3	1,670	89
	120	38.9	2,990	100	70		65.3	8,740	151		145	27.7	1,450	80
125	35.8	2,680	93	75	63.4	7,750	148	150	23.5		1,240	69		
130	32.3	2,390	86											

**LIFT RATINGS IN POUNDS**

**With 46HI Angle Boom, #9 Angle Jib and 39,000 Pound Counterweight**

Boom and Jib Length	Jib Radius (Feet)	5.0 Deg Offset		15.0 Deg Offset		25.0 Deg Offset		Boom and Jib Length	Jib Radius (Feet)	5.0 Deg Offset		15.0 Deg Offset		25.0 Deg Offset	
		Boom Angle	Ratings (Pounds)	Boom Angle	Ratings (Pounds)	Boom Angle	Ratings (Pounds)			Boom Angle	Ratings (Pounds)	Boom Angle	Ratings (Pounds)	Boom Angle	Ratings (Pounds)
20' (6.1M) JIB & 50' (15.2M) BOOM	17	80.4	18,250*					20' (6.1M) JIB & 100' (30.5M) BOOM	25	80.5	18,250*				
	20	77.9	18,250*	80.6	18,250*				30	78.1	18,250*	79.7	18,250*		
	25	73.8	18,250*	76.4	18,250*	78.9	18,250*		35	75.7	18,250*	77.3	18,250*	78.7	18,250*
	30	69.5	18,250*	72.1	18,250*	74.6	18,250*		40	73.3	18,250*	74.8	18,250*	76.2	18,250*
	35	65.1	18,250*	67.7	18,250*	70.1	18,250*		50	68.2	15,880	69.8	15,880	71.2	15,880
20' (6.1M) JIB & 60' (18.3M) BOOM	40	60.6	18,250*	63.2	18,250*			60	63.0	12,240	64.5	12,240	65.9	12,240	
	50	50.7	17,050	53.2	17,060	55.3	17,060	70	57.6	9,740	59.0	9,740	60.3	9,740	
	18	80.8	18,250*					80	51.7	7,910	53.2	7,910	54.4	7,910	
	20	79.4	18,250*					90	45.4	6,520	46.8	6,520	47.9	6,520	
	25	75.8	18,250*	78.1	18,250*	80.4	18,250*	100	38.2	5,440	39.5	5,440	40.5	5,440	
20' (6.1M) JIB & 70' (21.3M) BOOM	30	72.1	18,250*	74.5	18,250*	76.6	18,250*	20' (6.1M) JIB & 110' (33.5M) BOOM	26	80.8	18,250*				
	35	68.4	18,250*	70.7	18,250*	72.8	18,250*	30	79.1	18,250*	80.5	18,250*			
	40	64.5	18,250*	66.8	18,250*	68.8	18,250*	35	76.8	18,250*	78.3	18,250*	79.6	18,250*	
	50	56.3	16,820	58.6	16,820	60.5	16,820	40	74.6	18,250*	76.0	18,250*	77.3	18,250*	
	60	47.3	13,180	49.4	13,180	51.1	13,180	50	70.0	15,650	71.4	15,650	72.7	15,650	
20' (6.1M) JIB & 80' (24.4M) BOOM	20	80.6	18,250*					60	65.2	11,990	66.6	11,990	67.9	12,000	
	25	77.4	18,250*	79.5	18,250*			70	60.3	9,490	61.7	9,490	62.9	9,490	
	30	74.2	18,250*	76.2	18,250*	78.2	18,250*	80	55.1	7,660	56.5	7,660	57.6	7,660	
	35	70.9	18,250*	72.9	18,250*	74.8	18,250*	90	49.6	6,270	50.9	6,270	51.9	6,270	
	40	67.5	18,250*	69.5	18,250*	71.4	18,250*	100	43.5	5,180	44.8	5,190	45.7	5,190	
20' (6.1M) JIB & 90' (27.4M) BOOM	50	60.5	16,560	62.5	16,560	64.2	16,560	110	36.6	4,310	37.8	4,310	38.7	4,320	
	60	52.9	12,920	54.8	12,920	56.5	12,920	20' (6.1M) JIB & 120' (36.6M) BOOM	28	80.7	18,250*				
	70	44.4	10,410	46.3	10,410	47.7	10,420	30	79.8	18,250*					
	21	80.9	18,250*					35	77.8	18,250*	79.1	18,250*	80.4	18,250*	
	25	78.7	18,250*	80.5	18,250*			40	75.7	18,250*	77.0	18,250*	78.3	18,250*	
20' (6.1M) JIB & 90' (27.4M) BOOM	30	75.8	18,250*	77.6	18,250*	79.4	18,250*	50	71.5	15,440	72.8	15,440	74.0	15,440	
	35	72.8	18,250*	74.7	18,250*	76.4	18,250*	60	67.1	11,790	68.4	11,790	69.6	11,790	
	40	69.8	18,250*	71.7	18,250*	73.4	18,250*	70	62.6	9,280	63.9	9,280	65.0	9,290	
	50	63.6	16,350	65.4	16,350	67.1	16,360	80	57.9	7,450	59.2	7,450	60.3	7,450	
	60	57.1	12,710	58.9	12,710	60.4	12,710	90	53.0	6,060	54.2	6,060	55.2	6,070	
20' (6.1M) JIB & 90' (27.4M) BOOM	70	50.0	10,210	51.7	10,210	53.1	10,220	100	47.7	4,970	48.9	4,980	49.8	4,980	
	80	42.0	8,400	43.6	8,400	44.9	8,400	110	41.8	4,100	43.0	4,100	43.9	4,100	
	23	80.7	18,250*					120	35.2	3,380	36.3	3,380	37.1	3,380	
	25	79.7	18,250*					20' (6.1M) JIB & 130' (39.6M) BOOM	29	80.9	18,250*				
	30	77.1	18,250*	78.8	18,250*	80.4	18,250*	30	80.5	18,250*					
20' (6.1M) JIB & 90' (27.4M) BOOM	35	74.4	18,250*	76.1	18,250*	77.7	18,250*	35	78.6	18,260*	79.9	18,250*	79.1	18,250*	
	40	71.7	18,250*	73.4	18,250*	74.9	18,250*	40	76.7	18,250*	77.9	18,250*	75.1	18,210	
	50	66.2	16,120	67.8	16,120	69.3	16,120	50	72.7	15,210	74.0	15,210	71.0	11,550	
	60	60.4	12,460	62.0	12,470	63.4	12,470	60	68.7	11,550	69.9	11,550	66.8	9,050	
	70	54.2	9,960	55.8	9,970	57.1	9,970	70	64.6	9,050	65.8	9,050	66.8	9,050	
20' (6.1M) JIB & 90' (27.4M) BOOM	80	47.5	8,150	49.0	8,150	50.3	8,150	80	60.3	7,220	61.5	7,220	62.5	7,220	
	90	40.0	6,760	41.4	6,760	42.5	6,760	90	55.8	5,820	57.0	5,830	57.9	5,830	



**LIFT RATINGS IN POUNDS (continued)**

**With 46HI Angle Boom, #9 Angle Jib and 39,000 Pound Counterweight**

Boom and Jib Length	Jib Radius (Feet)	5.0 Deg Offset		15.0 Deg Offset		25.0 Deg Offset	
		Boom Angle	Ratings (Pounds)	Boom Angle	Ratings (Pounds)	Boom Angle	Ratings (Pounds)
20' JIB (con't)	100	51.0	4,740	52.2	4,740	53.1	4,740
	110	46.0	3,850	47.1	3,850	47.9	3,850
	120	40.4	3,130	41.4	3,140	42.2	3,140
	130	34.0	2,530	35.0	2,530	35.7	2,540
20' (6.1M) JIB & 140' (42.7M) BOOM	31	80.7	18,250*				
	35	79.3	18,250*	80.5	18,250*		
	40	77.5	18,250*	78.7	18,250*	79.8	18,250*
	50	73.8	14,980	75.0	14,980	76.1	14,980
	60	70.1	11,330	71.2	11,330	72.3	11,330
	70	66.2	8,810	67.4	8,810	68.4	8,810
	80	62.3	6,990	63.4	6,990	64.4	6,990
	90	58.2	5,600	59.3	5,600	60.2	5,600
	100	53.9	4,500	55.0	4,500	55.9	4,500
	110	49.3	3,620	50.4	3,620	51.2	3,620
	120	44.4	2,890	45.4	2,890	46.2	2,900
130	39.0	2,290	40.0	2,290	40.7	2,290	
140	32.9	1,780	33.8	1,780	34.4	1,780	
30' (9.1M) JIB & 80' (24.4M) BOOM	24	80.7	18,250*				
	25	80.1	18,250*				
	30	77.5	18,260*	80.1	18,250*		
	35	74.8	18,250*	77.4	18,250*	79.8	18,250*
	40	72.1	18,250*	74.7	18,250*	77.1	18,250*
	50	66.6	16,460	69.1	16,460	71.4	16,460
	60	60.8	12,810	63.3	12,820	65.5	12,820
	70	54.7	10,300	57.1	10,310	59.2	10,310
80	48.0	8,490	50.3	8,490	52.3	8,490	
30' (9.1M) JIB & 90' (27.4) BOOM	25	80.9	18,250*				
	30	78.5	18,250*	80.9	18,250*		
	35	76.1	18,250*	78.5	18,250*	80.7	18,250*
	40	73.7	18,250*	76.0	18,250*	78.2	18,250*
	50	68.7	16,210	71.0	16,210	73.1	16,220
	60	63.4	12,560	65.7	12,560	67.8	12,560
	70	58.0	10,060	60.2	10,060	62.2	10,060
	80	52.1	8,230	54.3	8,230	56.2	8,230
	90	45.8	6,840	47.9	6,840	49.6	6,840
30' (9.1M) JIB & 100' (30.5M) BOOM	27	80.8	18,250*				
	30	79.4	18,250*				
	35	77.2	18,250*	79.4	18,250*		
	40	74.9	18,250*	77.1	18,250*	79.2	18,250*
	50	70.4	15,980	72.5	15,980	74.5	15,980
	60	65.6	12,320	67.7	12,320	69.7	12,330
	70	60.7	9,820	62.8	9,820	64.6	9,820
	80	55.5	7,990	57.5	7,990	59.3	7,990
	90	49.9	6,600	51.9	6,600	53.6	6,600
	100	43.9	5,510	45.8	5,520	47.3	5,520
	30' (9.1M) JIB & 110' (33.5M) BOOM	29	80.6	18,250*			
30		80.2	18,250*				
35		78.1	18,250*	80.2	18,250*		
40		76.0	18,250*	78.1	18,250*	80.0	18,250*
50		71.8	15,730	73.8	15,730	75.7	15,730
60		67.5	12,080	69.4	12,080	71.2	12,080
70		63.0	9,560	64.9	9,570	66.6	9,570
80		58.3	7,740	60.2	7,740	61.9	7,750
90		53.3	6,350	55.2	6,350	56.8	6,360
100		48.0	5,250	49.8	5,260	51.3	5,260
110		42.2	4,380	44.0	4,380	45.3	4,380
30' (9.1M) JIB & 120' (36.6M) BOOM	30	80.8	18,250*				
	35	78.9	18,250*	80.8	18,250*		
	40	77.0	18,250*	78.9	18,250*	80.6	18,250*
	50	73.0	15,520	74.9	15,520	76.7	15,520
	60	69.0	11,860	70.9	11,860	72.6	11,870
	70	64.9	9,360	66.7	9,360	68.4	9,360
	80	60.6	7,530	62.4	7,530	64.0	7,530
	90	56.1	6,130	57.9	6,140	59.4	6,140
	100	51.4	5,050	53.1	5,050	54.6	5,050
110	46.3	4,160	48.0	4,160	49.3	4,160	
120	40.7	3,440	42.3	3,450	43.5	3,450	

Boom and Jib Length	Jib Radius (Feet)	5.0 Deg Offset		15.0 Deg Offset		25.0 Deg Offset	
		Boom Angle	Ratings (Pounds)	Boom Angle	Ratings (Pounds)	Boom Angle	Ratings (Pounds)
30' (9.1M) JIB & 130' (39.6M) BOOM	32	80.7	18,250*				
	35	79.6	18,250*				
	40	77.8	18,250*	79.6	18,250*		
	50	74.1	15,280	75.9	15,280	77.5	15,290
	60	70.4	11,630	72.1	11,630	73.7	11,630
	70	66.6	9,110	68.3	9,110	69.8	9,120
	80	62.6	7,280	64.3	7,280	65.8	7,280
	90	58.5	5,890	60.2	5,890	61.6	5,890
	100	54.2	4,800	55.8	4,800	57.2	4,800
	110	49.6	3,910	51.2	3,910	52.6	3,910
	120	44.7	3,190	46.3	3,190	47.5	3,200
130	39.3	2,590	40.8	2,590	41.9	2,590	
40' (12.2M) JIB & 100' (30.5M) BOOM	29	80.9	18,250*				
	30	80.6	18,250*				
	35	78.6	18,250*				
	40	76.4	18,250*	79.1	18,250*		
	50	72.2	16,040	74.8	16,040	77.4	16,050
	60	67.8	12,390	70.5	12,390	72.9	12,390
	70	63.3	9,870	65.9	9,880	68.3	9,880
	80	58.6	8,040	61.2	8,040	63.5	8,050
	90	53.7	6,650	56.2	6,650	58.4	6,660
	100	48.4	5,560	50.8	5,570	52.9	5,570
40' (12.2M) JIB & 110' (33.5M) BOOM	31	80.8	18,250*				
	35	79.2	18,250*				
	40	77.3	18,250*	79.8	18,250*		
	50	73.4	15,790	75.9	16,790	78.2	15,790
	60	69.4	12,130	71.8	12,130	74.1	12,140
	70	65.2	9,620	67.7	9,620	69.9	9,620
	80	60.9	7,800	63.3	7,800	65.5	7,800
	90	56.4	6,390	58.8	6,400	60.9	6,400
	100	51.7	5,310	54.0	5,310	56.0	5,310
	110	46.6	4,430	48.9	4,430	50.8	4,430
40' (12.2M) JIB & 120' (36.6M) BOOM	33	80.6	18,250*				
	35	79.9	18,250*				
	40	78.1	18,250*	80.5	18,250*		
	50	74.4	15,570	76.8	15,570	79.0	15,580
	60	70.7	11,920	73.0	11,920	75.2	11,920
	70	66.9	9,400	69.2	9,400	71.3	9,410
	80	62.9	7,570	65.2	7,570	67.2	7,570
	90	58.8	6,180	61.0	6,180	63.0	6,180
	100	54.5	5,090	56.7	5,090	58.6	5,090
	110	49.9	4,210	52.1	4,210	53.9	4,210
	120	45.0	3,480	47.1	3,480	48.8	3,490
40' (12.2M) JIB & 130' (39.6M) BOOM	34	80.9	18,250*				
	35	80.5	18,250*				
	40	78.8	18,250*				
	50	75.4	15,340	77.6	15,340	79.7	15,340
	60	71.9	11,670	74.1	11,670	76.1	11,680
	70	68.3	9,160	70.5	9,160	72.5	9,160
	80	64.6	7,320	66.8	7,320	68.7	7,330
	90	60.8	5,930	62.9	5,930	64.8	5,940
	100	56.9	4,840	59.0	4,840	60.8	4,840
	110	52.7	3,960	54.8	3,960	56.6	3,970
	120	48.3	3,230	50.3	3,230	52.0	3,240
	130	43.6	2,630	45.6	2,630	47.1	2,630



## MAXIMUM BOOM & JIB SELF-ERECTION DATA - 46HI BOOM

#9 JIB	Over The End & Over The Side	
	Boom Length (Ft.)	Jib Length (Ft.)
	160	0
150	0	
140	20	
130	40	

## SPECIFICATIONS

Swing Speed .....	3.50 RPM
Travel Speed .....	1.00 MPH High Range
Gradeability .....	40% (approximately 22°)

## LOAD HOISTING INFORMATION (7/8" DIA. IPS WIRE ROPE)

Maximum Lifting Capacity (Pounds)	Minimum Parts of Line	Maximum Hoisting Dist. in Ft.	
		Main (Right)	Aux. (Left)
120,000	6	98	98
113,700	5	117	117
90,960	4	147	147
68,220	3	196	196
45,480	2	294	294
22,740	1	588	588

## GROUND PRESSURE

Lifting crane with 40' 46HI boom, standard counterweight  
 30" (762 mm) Shoes ..... 9.20 psi

## BOOM COMPOSITION CHART - 46 HI BOOM

Boom Length Feet	Boom Sections					
	20' 46HI Inner	5' 46HR Center	10' 46HR Center	20' 46HR Center	40' 46HR Center	20" 46HR or 46 HI Outer
40	1	0	0	0	0	1
50	1	0	1	0	0	1
60	1	0	0	1	0	1
70	1	0	1	1	0	1
80	1	0	0	0	1	1
90	1	0	1	0	1	1
100	1	0	0	1	1	1
110	1	0	1	1	1	1
120	1	0	0	0	2	1
130	1	0	1	0	2	1
140	1	0	0	1	2	1
150	1	0	1	1	2	1
160	1	0	0	0	3	1

## #9 Angle Jib Composition

Jib Length Feet	10' Inner	10' Center	10' Outer	Eff. Jib Weight (Pounds)	5°	15°	25°
20	1	0	1	1,550	3.75	6.00	8.50
30	1	1	1	2,100	3.50	7.83	11.58
40	1	2	1	2,800	5.08	9.67	14.50

Note: The #9 jib mounted on a 46HI outer requires the use of a 46HI / #9 jib adaptor. Refer to the HC60 Operator's Manual for additional information.

## HOIST DRUM PERFORMANCE

MAIN and AUXILIARY HOIST - 7/8" Diameter Rope					
Rope Layer	High Range		Low Range		Total Rope Length
	Line Speed (Feet per Minute)	Single Line Pull	Line Speed (Feet per Minute)	Single Line Pull	
1st*	337.61	24,250	258.21	32,410	81
2nd*	365.18	22,490	279.21	29,980	174
3rd*	393.06	20,940	300.54	27,780	268
4th*	420.62	19,620	321.87	26,010	375
5th*	448.51	18,300	342.86	24,470	483
6th*	476.07	17,200	364.19	22,930	604
7th*	503.96	16,310	385.52	21,610	725
8th*	531.52	15,430	406.52	20,500	860
9th**	559.41	14,770	427.84	19,620	994
10th**	586.97	14,110	449.17	18,520	1,043

THIRD DRUM with FREE FALL - 3/4" Diameter Rope					
Rope Layer	High Range		Low Range		Total Rope Length
	Line Speed Feet Per Min.	Single Line Pull	Line Speed Feet Per Min.	Single Line Pull	
1st*	220	15,200	180	18,500	44
2nd*	235	13,955	195	16,980	93
3rd*	255	12,895	210	15,695	145
4th*	270	11,990	225	14,590	201
5th*	285	11,200	235	13,630	262
6th*	395	10,505	250	12,790	326
7th*	320	9,895	265	12,045	394
8th*	335	9,350	280	11,380	466
9th**	355	8,865	290	10,790	543
10th**	370	8,425	305	10,255	623

\* = Working Layers • \*\* = Storage Layers

\*\*Single Line Pull reflects the maximum hydraulic capacity of the hoist unit at the given layer and range setting. The allowable single line pull may be limited by the strength of the hoist rope. See load hoisting table for rope limitations.

## CRANE RATING DATA

### **WARNING**

This rating chart is invalid if the crane has been modified or altered by use of other than **GENUINE AMERICAN PARTS** as such modifications or alterations may affect its capacity or safe operation. See American Crane Corporation Service Bulletin #259.

The ratings in this chart are for planning purposes only. Only those ratings specifically assigned to a crane and mounted in the operator's cab or in the Operator's Manual should be used for actual operation.

Ratings in this chart are in POUNDS and do not exceed the percentage of tipping specified for this crane by ANSI B30.5. All ratings require that the crane be standing level on a firm uniformly supporting surface.

Do not lift loads in excess of those shown on this chart. Lifting loads in excess of those shown or operation not in accordance with good operating practice, including limitations shown on page 3499 of Operator's Manual, can cause tipping, structural damage or catastrophic failure.

Asterisk (\*) areas on this chart indicate ratings which are limited by strength of material or factors other than stability (tipping).

RADIUS IN FEET is the horizontal distance at ground level from the crane centerline of rotation to a vertical line through the center of gravity of the suspended load.

When using the main boom fall with jib in place, the main fall ratings must be reduced by the jib effective weight shown on the jib rating chart plus twice the weight of all suspended blocks, slings, rope, etc., at the jib fall.

When using the main boom fall with boom tip extension in place, the main fall ratings must be reduced by the weight of the boom tip extension plus twice the weight of all suspended blocks, slings, rope, etc., at the boom tip extension fall.

Blocks, slings, buckets and other load carrying devices are considered part of the load. The weight of standard hoisting ropes for the rating at a given radius has been calculated as part of the boom point load and need not be considered in determining net allowable loads.

Ratings shown on this chart make no allowance for such factors as out of plumb loads, wind, poor soil conditions, improper inflation of rubber tires and dynamic effects due to excessive operating speeds. The user (operator) must exercise judgement to make allowance for these conditions. See page 3499 of Operator's Manual for detailed information.

No account is taken of the wind force on the load. This effect, which can be substantial for loads with large surface areas, must be considered by the user. In any wind it is strongly recommended that taglines be used to control the load.

BOOM HOIST LINE is 12 parts of 5/8 inch diameter EIPS wire rope with a minimum breaking strength of 41,200 pounds.

PENDANT SUSPENSION LINE is 2 parts of 1-1/4 inch diameter MONOLAY wire rope with a minimum breaking strength of 172,800 pounds.

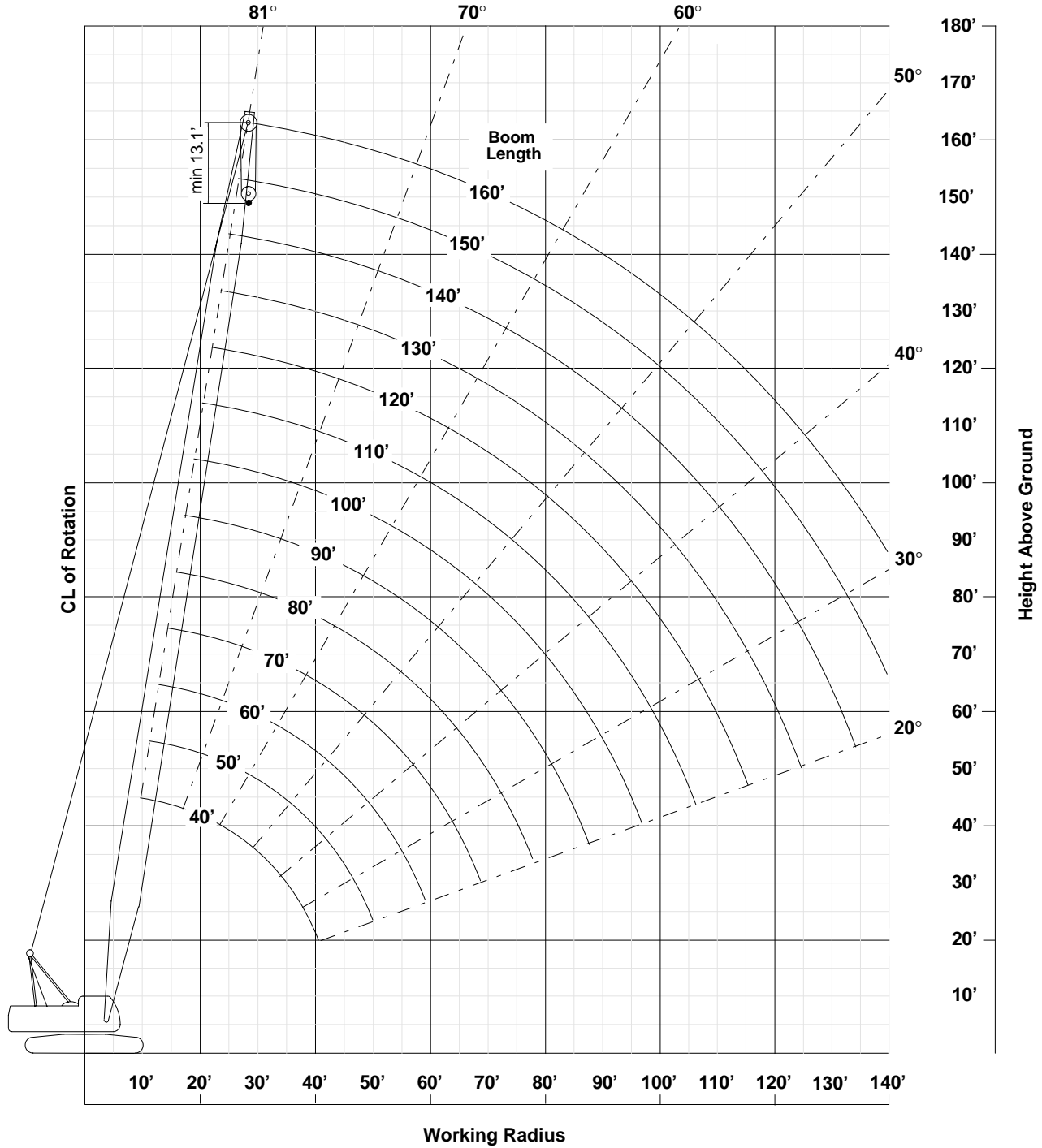
MAIN LOAD LINE is 7/8 inch diameter EIPS wire rope with a minimum breaking strength of 79,600 pounds.

WHIP LINE is 7/8 inch diameter IPS wire rope with a minimum breaking strength of 69,200 pounds.

### ERECTION

Erection is with the A-Frame fully raised. Erection "OVER THE END" is with the boom over the idler end. Erection "OVER THE SIDE" is with the boom 90° to the sideframes and with the side frames extended. Blocks, slings and other load carrying devices must be on the ground during erection.

## AMERICAN MODEL HC 60 WORKING RANGES WITH 46HI BOOM



For more information, product demonstration, or details on sales, lease and rental plans, please contact your local Terex American Crane Distributor.

We reserve the right to amend these specifications at any time without notice. The only warranty applicable is our standard written warranty applicable to the particular product and sale. We make no other warranty, expressed or implied.

### Bigge Crane and Rigging Co.

10700 Bigge Avenue  
 San Leandro, CA 94577  
 Phone: (888) 337-BIGGE or (510) 638-8100  
 Fax: (510) 639-4053  
 Email: info@bigge.com  
 Web site: www.bigge.com

## **TEREX CRANES**

**AMERICAN CRANE CORPORATION**  
 202 Raleigh Street  
 Wilmington, NC 28412 USA  
 (910) 395-8500 • FAX: (910) 395-8538  
 E-mail: american@american-crane.com

