

KOBELCO

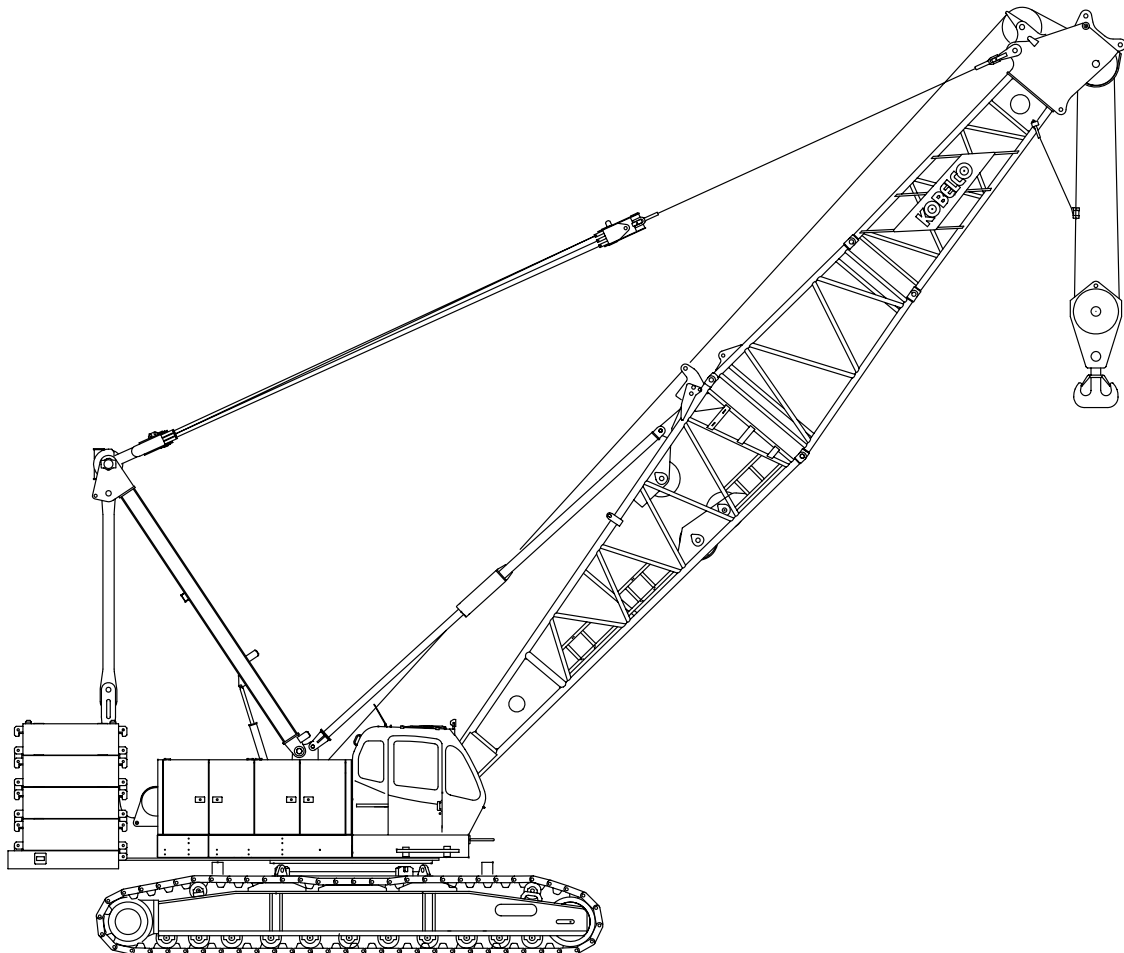
HYDRAULIC CRAWLER CRANE

CK1600-II

LUFFING JIB LIFTING
CAPACITIES

Max. Lifting Capacity with Luffing Jib: 79,000 Lbs.

Max. Boom + Luffing Jib Length: 157 ft + 175 ft



SPECIFICATIONS FOR CK1600-II CRAWLER CRANE

Luffing Jib

The Kobelco CK1600-II Crawler Crane is designed from the ground up for reliable operation, convenient maintenance and easy transport.

Please consult your Kobelco distributor for additional information regarding specifications, operating parameters and maintenance requirements.

1. GENERAL DESCRIPTION

| | | |
|--|--|--|
| Type | Crawler mounted, fully revolving | |
| Maximum lifting capacity with luffing jib | 79,000 lbs (35,800 kg) | |
| | (at 40' operating radius) | |
| Maximum boom length | 157' (47.9 m) | |
| Maximum luffing jib length | 175' (53.3 m) | |
| Working weight | Approx. 299,000 lbs (135.5 tons) | |
| | (Including upper and lower machine, counterweights, 107' boom + 75' jib, hook block) | |
| Ground bearing pressure | | |
| (with 107' boom + 75' jib) | Approx. 11.5 psi | |
| | (79.2 kPa) | |

2. WORKING SPEED

| | |
|--|----------------------------------|
| Hoist line speed (front and rear drum) | 390 ~ 10 ft/min (120 ~ 3 m/min) |
| Lowering line speed (front and rear drum) | 390 ~ 10 ft/min (120 ~ 3 m/min) |
| Boom hoist line speed | 157 ~ 7 ft/min (48 ~ 2 m/min) |
| Boom lowering line speed | 157 ~ 7 ft/min (48 ~ 2 m/min) |
| Jib hoist line speed | 197 ft/min (60 m/min) |
| Jib lowering line speed | 197 ft/min (60 m/min) |
| Swing speed | 2.1 rpm (2.1 min ⁻¹) |
| Travel speed (High / Low) | 0.81 / 0.56 mph |
| | (1.3 / 0.9 km/hour) |

Line speed based on single line, no load and first layer of rope on the drum. Line speed is controllable by Dial-Type Speed Control System.

3. LUFFING JIB ATTACHMENTS

3.1 Boom

The welded lattice construction uses tubular, high-tension steel chords with pin connections between sections, extendible up to 157' (47.9 m).

| | |
|--|---------------|
| Basic boom length | 107' (32.7 m) |
| Boom tip section (with pin connected boom point sheave) | 2' (0.7 m) |
| Boom insert section (with idler sheave) | 30' (9.14 m) |
| Boom base section | 25' (7.6 m) |
| Maximum boom length | 157' (47.9 m) |

3.2 Boom insert

Boom inserts is available to provide extension capabilities. They feature welded lattice construction with tubular, high-tension steel chords and pin connections on each one of 10' (3.1 m), 20' (6.1 m), 40' (12.2 m) in length.

3.3 Jib

The jib employs welded lattice construction with tubular, high-tension steel chords with pin connections between sections, extendible up to 175' (53.3 m).

| | |
|------------------------------|----------------------------|
| Basic jib length | 75' (22.9 m) |
| Jib insert | 14' (4.3 m), 20' (6.1 m) |
| Jib tip section | 21' (6.1 m) |
| Jib base section | 20' (6.4 m) |
| No. of point sheaves | 2 |
| Maximum lift capacity | 79,000 lbs (35.8 tons) |
| Maximum jib length | 175' (53.3 m) |
| Insert jib length | 10' (3.05 m), 20' (6.10 m) |
| | 40' (12.2 m) |

Jib boom inserts are available to provide extension capabilities. They feature welded lattice construction with tubular, high-tension steel chords and pin connections.

3.4 Auxiliary sheave

One (1) sheave with rollers, required during erection of jib.

3.5 Diameter of wire rope

| | |
|-----------------------------------|-------|
| Hoist rope | 26 mm |
| Jib hoist rope (8 parts) | 26 mm |
| Boom hoist rope (12 parts) | 20 mm |
| Boom suspension rope | 30 mm |
| Jib suspension rope | 30 mm |
| Strut suspension rope | 30 mm |

3.6 Boom hoist reeving

Twelve (12) parts of 20 mm dia. high strength wire rope.

3.7 Jib hoist reeving

Eight (8) parts of 26 mm dia. high strength wire rope.

3.8 Boom backstops

Telescopic type with spring bumper.



4. JIB HOIST DRUM

| | |
|-----------------------|--|
| Jib hoist drum | (3rd drum on straight crane) Powered by hydraulic motor through planetary reducer. |
| Drum | Single drum grooved for 26 mm dia. wire rope |
| Brake | A spring-set, hydraulically released multiple-disc brake is internally configured in the hoist motor and is operated through a counter-balance valve. External ratchet for locking drum. |

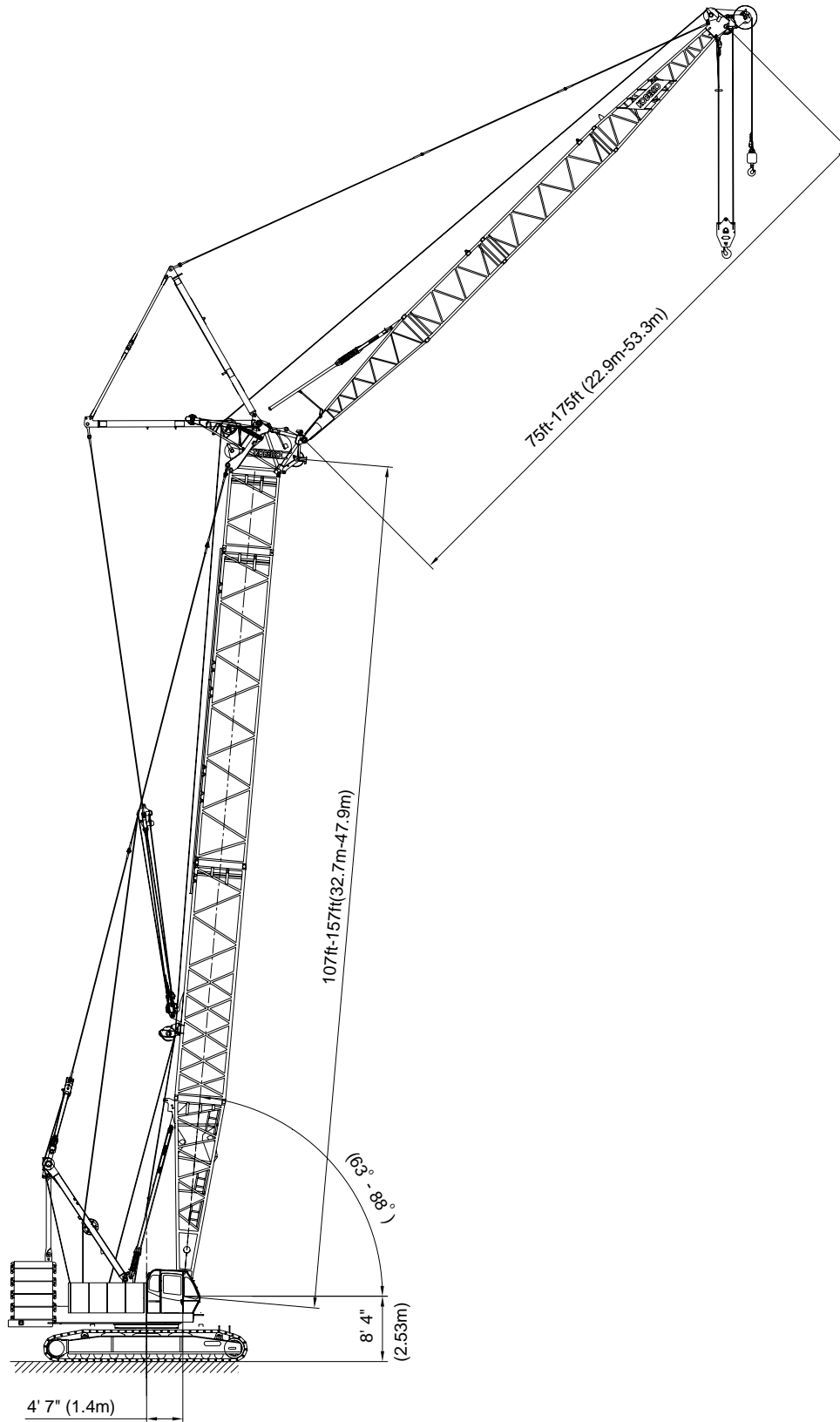
9. SAFETY SERVICE

- Function lock lever
- Hook over hoist shut off (Anti-two-block)
- Boom and jib over hoist limit switch
- Boom angle indicator
- Signal horn
- Boom and jib hoist drum lock
- Front and rear hoist drum lock
- Swing lock
- Swing alarm (Buzzer and lamps)
- Boom backstops
- Jib backstops
- Strut backstops
- Over load preventive device (Load Moment Indicator)

All specifications are subject to change without notice.



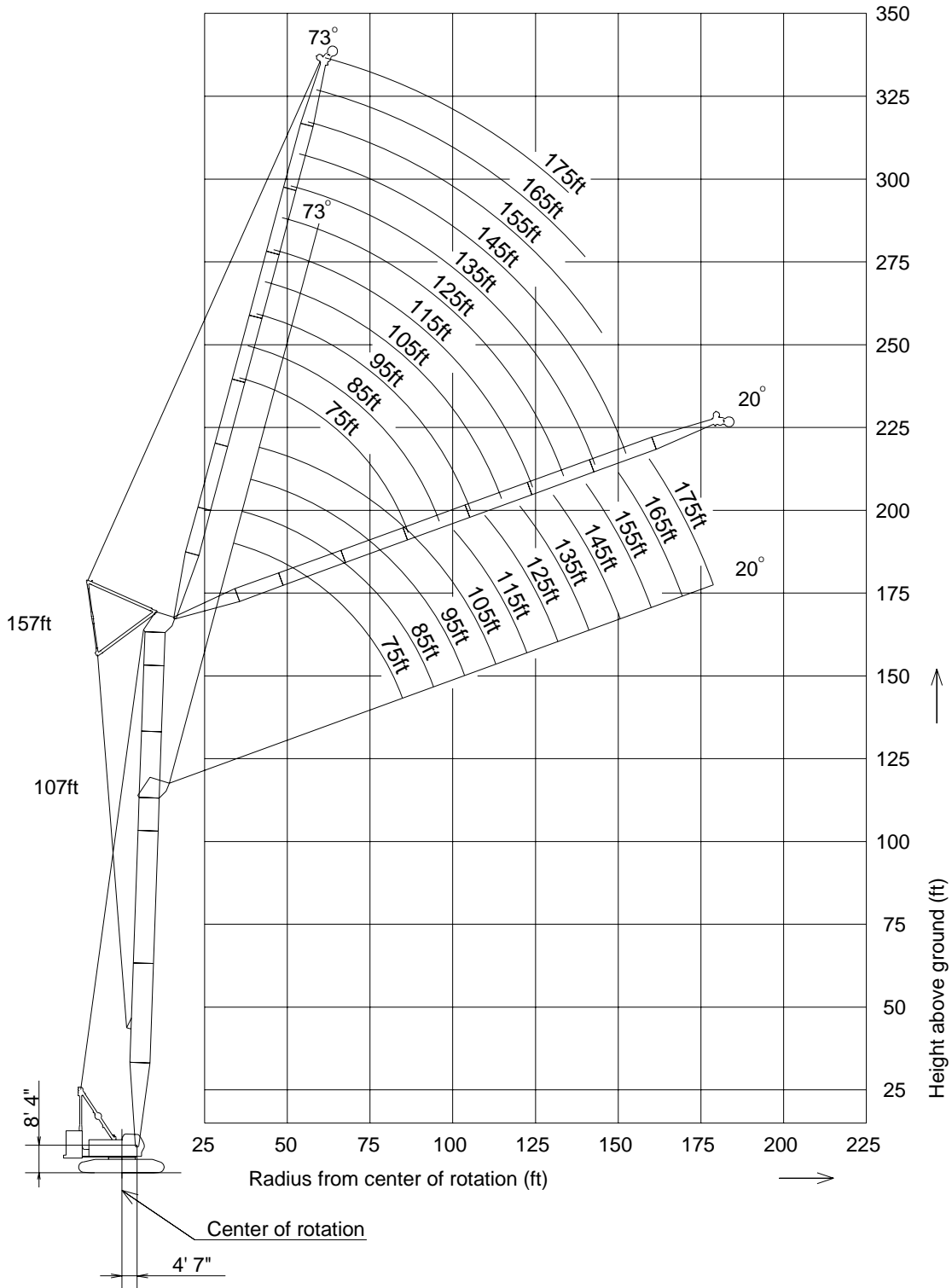
Luffing Jib Dimensions



Luffing Jib Working Ranges



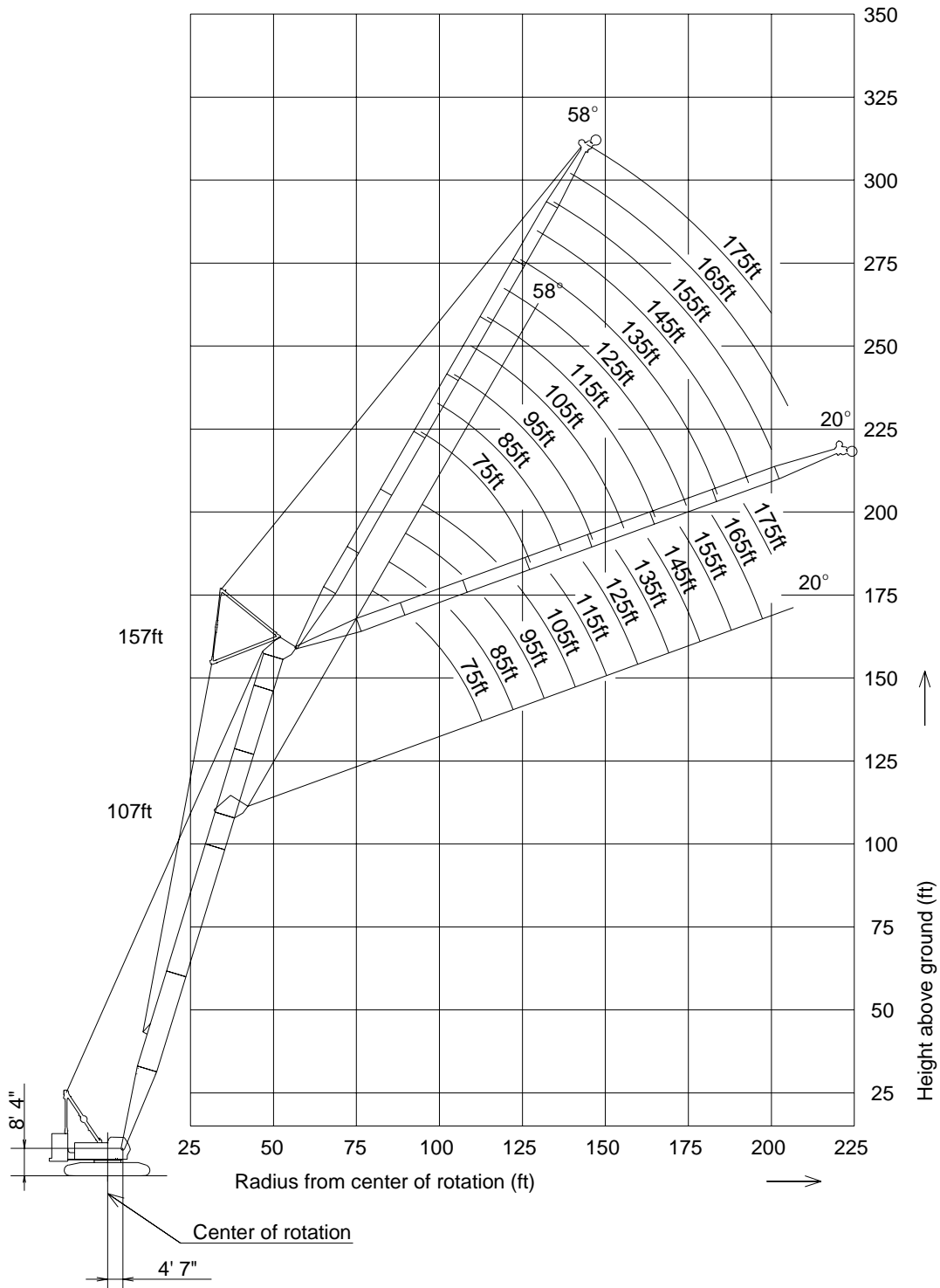
Boom Angle 88°



Luffing Jib Working Ranges



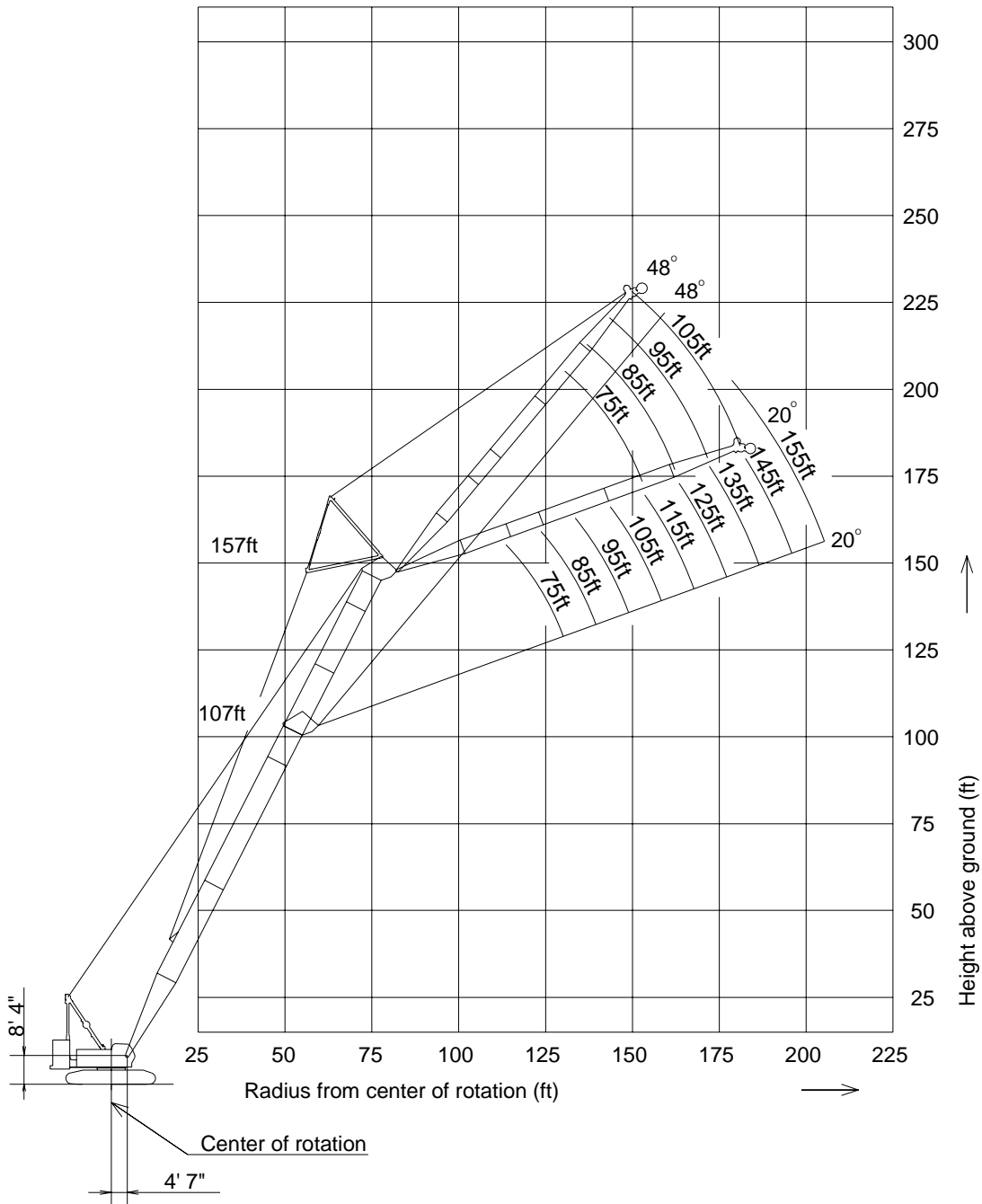
Boom Angle 73°



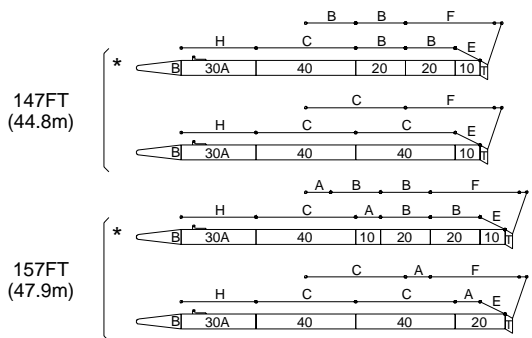
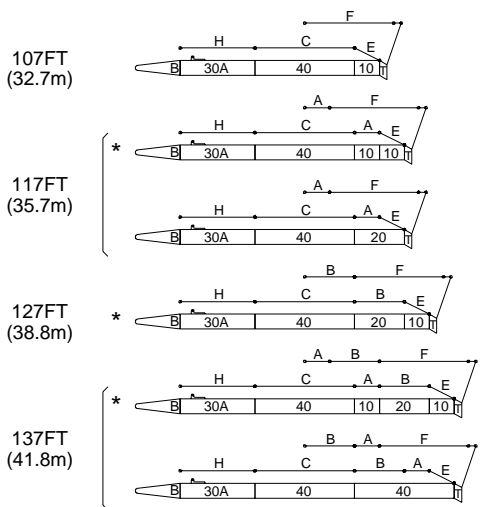
Luffing Jib Working Ranges



Boom Angle 63°



Boom and Guy Line Arrangement (Luffing Jib) 1/2

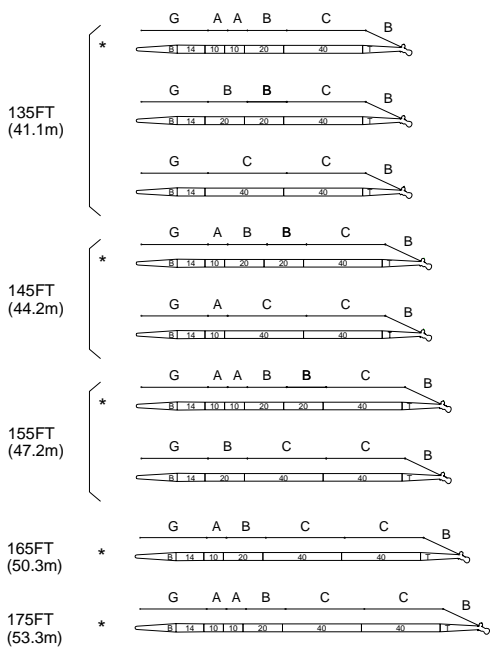
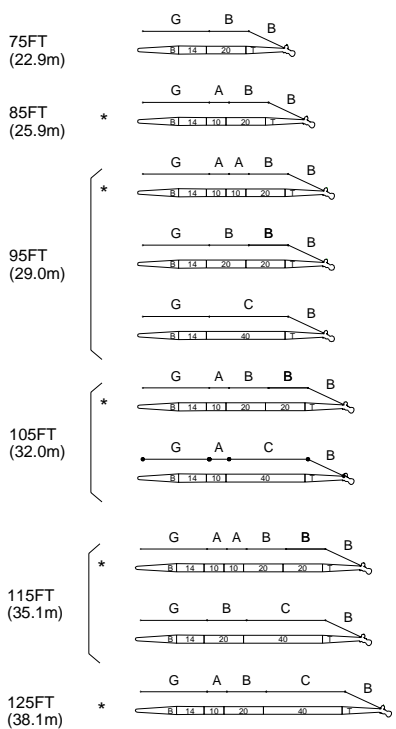


| SYMBOL | DIA in (mm) | LENGTH ft (m) |
|--------|--------------|---------------|
| A | 1-3/16" (30) | 10 (3.05) |
| B | 1-3/16" (30) | 20 (6.10) |
| C | 1-3/16" (30) | 40 (12.2) |
| E | 1-3/16" (30) | 9.5(2.88) |
| F | 1-3/16" (30) | 48.7(14.9) |
| H | 1-3/16" (30) | 30 (9.14) |

ALWAYS CONSULT THIS PLATE FOR THE BOOM AND GUY LINE ARRANGEMENT.

* MARK SHOWS THE STANDARD BOOM ARRANGEMENT WHICH MAKE THE BOOM ARRANGEMENT OF LESS THAN THE EACH BOOM LENGTH POSSIBLE

Boom and Guy Line Arrangement (Luffing Jib) 2/2



ALWAYS CONSULT THIS PLATE FOR THE JIB AND GUY LINE ARRANGEMENT.

* MARK SHOWS THE STANDARD JIB ARRANGEMENT WHICH MAKE THE JIB ARRANGEMENT OF LESS THAN THE EACH JIB LENGTH POSSIBLE.

| SYMBOL | DIA in (mm) | LENGTH ft (m) |
|--------|--------------|---------------|
| A | 1-3/16" (30) | 10 (3.05) |
| B | 1-3/16" (30) | 20 (6.10) |
| C | 1-3/16" (30) | 40 (12.2) |
| G | 1-3/16" (30) | 34 (10.3) |

Rating Chart Supplemental Data

with Luffing Boom Tip



1. Rated loads included in the charts are the maximum allowable freely suspended loads at a given boom length, boom angle and load radius, and have been determined for the machine standing level on firm supporting surface under ideal operating conditions. The user must limit or de-rate rated loads to allow for adverse conditions (such as soft or uneven ground, out-of-level conditions, wind, side loads, pendulum action, jerking or sudden stopping of loads, inexperience of personnel, multiple machine lifts, and traveling with a load).
2. Rated loads do not exceed 75% of minimum tipping loads. Rated loads based on factors other than machine stability such as structural competence are shown by asterisk * in the charts.
3. The machine must be reeved and set-up as stated in the operation manual and all the instruction manuals if these manuals are missing, obtain replacements.
 - Boom backstops are required for all boom length.
 - Gantry must be fully raised position for all operations.
 - The crane must be leveled to within 1% on a firm supporting surface.
4. Do not attempt to lift where no radius on load is listed as crane may tip or collapse.
5. Attempting to lift more than rated loads may cause machine to tip or collapse. Do not tip machine to determine rated loads.
6. Weight of hooks, hook blocks, slings and other lifting devices are a part of the total load. Their total weight must be subtracted from the rated load to obtain the weight that can be lifted.
7. The total load that can be lifted over boom point with auxiliary sheave is the value for the 1250 lbs deducted from rated load for the boom without auxiliary sheave.
8. The total load that can be lifted over an auxiliary sheave is the value for 1250 lbs deducted from rated load for the boom without auxiliary sheave, but it should not exceed 59,000 lbs.
9. Least stable position is over the side.
10. Maximum hoist load for number of reeving parts of line for hoist rope.

11. Lifting capacities listed apply only to the machine as originally manufactured and designed by KOBELCO CRANES CO., LTD. Modifications to this machine or use of equipment other than that specified can reduce operating capacity.
12. Designed and rated to comply with ANSI Code B30.5.

Operation of this equipment in excess of rated loads or disregard of instruction voids the warranty

Main Boom Hoist Loads

| | | | | |
|----------------------|--------|--------|--------|---------|
| No. of Parts of line | 1 | 2 | 3 | 4 |
| Maximum Loads (lbs) | 29,500 | 59,000 | 88,500 | 118,000 |

| | | |
|----------------------|---------|---------|
| No. of Parts of line | 5 | 6 |
| Maximum Loads (lbs) | 147,500 | 170,000 |

Auxilliary Sheave Hoist Loads

| | | |
|----------------------|--------|--------|
| No. of Parts of line | 1 | 2 |
| Maximum Loads (lbs) | 29,500 | 59,000 |



Rating Chart Supplemental Data for Luffing



- Rated loads included in the charts are the maximum allowable freely suspended loads at a given boom length, boom angle and load radius, and have been determined for the machine standing level on firm supporting surface under ideal operating conditions. The user must limit or de-rate rated loads to allow for adverse conditions (such as soft or uneven ground, out-of-level conditions, wind, side loads, pendulum action, jerking or sudden stopping of loads, inexperience of personnel, multiple machine lifts, and traveling with a load).
- Rated loads do not exceed 75% of minimum tipping loads. Rated loads based on factors other than machine stability such as structural competence are shown by asterisk * in the charts.
- The machine must be reeved and set-up as stated in the operation manual and all the instruction manuals if these manuals are missing, obtain replacements.
 - Boom backstops are required for all boom length.
 - Gantry must be fully raised position for all operations.
 - The crane must be leveled to within 1% on a firm supporting surface.
- Do not attempt to lift where no radius on load is listed as crane may tip or collapse.
- Attempting to lift more than rated loads may cause machine to tip or collapse. Do not tip machine to determine rated loads.
- Weight of hooks, hook blocks, slings and other lifting devices are a part of the total load. Their total weight must be subtracted from the rated load to obtain the weight that can be lifted.
- The total load that can be lifted over jib is limited by rated jib loads.
- The total load that can be lifted over an auxiliary sheave should not exceed 29,500 lbs.
- Luffing boom and jib combinations.

| | | Jib Length (ft) | | | | | | | | | | | | |
|------------------|-----|-----------------|----|----|-----|-----|-----|-----|-----|-----|-----|-----|---|---|
| | | 75 | 85 | 95 | 105 | 115 | 125 | 135 | 145 | 155 | 165 | 175 | | |
| Boom Length (ft) | 107 | 0 | 0 | 0 | 0 | 0 | 0 | 0 | 0 | 0 | 0 | 0 | 0 | 0 |
| | 117 | 0 | 0 | 0 | 0 | 0 | 0 | 0 | 0 | 0 | 0 | 0 | 0 | 0 |
| | 127 | 0 | 0 | 0 | 0 | 0 | 0 | 0 | 0 | 0 | 0 | 0 | 0 | 0 |
| | 137 | 0 | 0 | 0 | 0 | 0 | 0 | 0 | 0 | 0 | 0 | 0 | 0 | 0 |
| | 147 | 0 | 0 | 0 | 0 | 0 | 0 | 0 | 0 | 0 | 0 | 0 | 0 | 0 |
| | 157 | 0 | 0 | 0 | 0 | 0 | 0 | 0 | 0 | 0 | 0 | 0 | 0 | 0 |

0: Combinations which is allowed.

- The boom should be erected over the front of the crawlers, not laterally. When erecting and lowering for all boom and jib combinations, the blocks for erection must be placed at the end of the crawlers.

- Least stable position is over the side.
- The boom should be erected over the front of the crawlers, not laterally. The blocks for erection must be placed at the end of the crawlers when erecting and lowering the boom.
 - In the case of nine counterweight, the boom length are 127 ft or over.
 - In the case of eleven counterweight and two carbodyweight, the boom length are 147 ft or over.
- Maximum number of reeving parts of line for hoist rope

• Luffing Jib

| | | Jib Length (ft) | | | | | | | | | | | |
|------------------|-----|-----------------|----|----|-----|-----|-----|-----|-----|-----|-----|-----|---|
| | | 75 | 85 | 95 | 105 | 115 | 125 | 135 | 145 | 155 | 165 | 175 | |
| Boom Length (ft) | 107 | 3 | 3 | 3 | 3 | 2 | 2 | 2 | 2 | 2 | 2 | 2 | 2 |
| | 117 | 3 | 3 | 3 | 2 | 2 | 2 | 2 | 2 | 2 | 2 | 2 | 2 |
| | 127 | 3 | 3 | 3 | 2 | 2 | 2 | 2 | 2 | 2 | 2 | 2 | 2 |
| | 137 | 3 | 3 | 2 | 2 | 2 | 2 | 2 | 2 | 2 | 2 | 2 | 2 |
| | 147 | 3 | 2 | 2 | 2 | 2 | 2 | 2 | 2 | 2 | 2 | 2 | 2 |
| | 157 | 3 | 2 | 2 | 2 | 2 | 2 | 2 | 2 | 2 | 2 | 2 | 2 |

• Crane Boom with Luffing Jib attached

| | | Jib Length (ft) | | | | | | | | | | |
|------------------|-----|-----------------|----|----|-----|-----|-----|-----|-----|-----|-----|-----|
| | | 75 | 85 | 95 | 105 | 115 | 125 | 135 | 145 | 155 | 165 | 175 |
| Boom Length (ft) | 107 | 4 | 4 | 4 | 4 | 4 | 4 | 3 | 3 | 3 | 3 | 3 |
| | 117 | 4 | 4 | 4 | 4 | 4 | 4 | 3 | 3 | 3 | 3 | 3 |
| | 127 | 4 | 4 | 4 | 3 | 3 | 3 | 3 | 3 | 3 | 3 | 3 |
| | 137 | 3 | 3 | 3 | 3 | 3 | 3 | 3 | 3 | 2 | 2 | 2 |
| | 147 | 3 | 3 | 3 | 3 | 3 | 3 | 3 | 2 | 2 | 2 | 2 |
| | 157 | 3 | 3 | 3 | 3 | 3 | 3 | 2 | 2 | 2 | 2 | 2 |

- Maximum hoist load for number of reeving parts of line for hoist rope.

Main Hoist Loads

| No. of Parts of line | 1 | 2 | 3 | 4 |
|----------------------|--------|--------|--------|---------|
| Maximum Loads (lbs) | 29,500 | 59,000 | 88,500 | 118,000 |

Jib Hoist Loads

| No. of Parts of line | 1 | 2 | 3 |
|----------------------|--------|--------|--------|
| Maximum Loads (lbs) | 29,500 | 59,000 | 79,000 |

Auxilliary Hoist Loads

| No. of Parts of line | 1 |
|----------------------|--------|
| Maximum Loads (lbs) | 29,500 |

- The total load that can be lifted over a luffing jib with main hook block is the value for 4,000 lbs deducted from rated load for the luffing jib without main hook block.



Rating Chart Supplemental Data for Luffing

KOBELCO

16. Lifting capacities listed apply only to the machine as originally manufactured and designed by KOBELCO CRANES CO., LTD. Modifications to this machine or use of equipment other than that specified can reduce operating capacity.

Designed and rated to comply with ANSI Code B30.5.

Operation of this equipment in excess of rated loads or disregard of instruction voids the warranty



Rated Loads in Pounds for CK1600-II Crane Boom with Luffing Jib Attached but not Used

LUFFING JIB ATTACHED TO BOOM AT 25 DEGREE OFFSET ANGLE

11 Counterweights + 2 Low Weights

| 107' Boom | | | | | | | | | | | | |
|-------------------|------------------|-----------------|-----------|-----------|----------|----------|----------|----------|----------|----------|----------|----------|
| Load Radius (ft.) | Boom Angle (deg) | Jib Length (ft) | | | | | | | | | | |
| | | 75 | 85 | 95 | 105 | 115 | 125 | 135 | 145 | 155 | 165 | 175 |
| 30 | 79.0 | 109,100 * | 105,800 * | 102,000 * | 98,800 * | 95,500 * | 91,100 * | 87,400 * | 83,700 * | 78,900 * | 74,700 * | 70,400 * |
| 32 | 77.9 | 99,700 * | 96,300 * | 92,800 * | 89,600 * | 86,500 * | 82,400 * | 78,800 * | 75,100 * | 70,600 * | 66,500 * | 62,300 * |
| 34 | 76.8 | 91,500 | 88,300 | 84,800 | 81,800 | 78,800 | 74,900 | 71,400 | 67,800 | 63,400 | 59,500 | 55,400 |
| 36 | 75.7 | 84,300 | 81,200 | 77,800 | 74,900 | 71,900 | 68,200 | 64,700 | 61,300 | 57,100 | 53,400 | 49,400 |
| 38 | 74.6 | 77,000 | 74,100 | 70,700 | 68,000 | 65,100 | 61,400 | 58,100 | 54,900 | 50,800 | 47,200 | 43,300 |
| 40 | 73.4 | 70,300 | 67,400 | 64,200 | 61,500 | 58,700 | 55,200 | 51,900 | 48,800 | 44,900 | 41,400 | 37,700 |
| 45 | 70.6 | 56,500 | 53,700 | 50,700 | 48,100 | 45,400 | 42,100 | 39,100 | 36,200 | 32,500 | 29,100 | 25,800 |
| 50 | 67.7 | 46,000 | 43,300 | 40,600 | 38,100 | 35,600 | 32,400 | 29,700 | 26,800 | 23,200 | 20,100 | 17,000 |
| 55 | 64.7 | 37,600 | 35,000 | 32,300 | 30,000 | 27,600 | 24,600 | 22,000 | 19,200 | 15,800 | | |
| 60 | 61.6 | 30,700 | 28,300 | 25,600 | 23,400 | 21,000 | 18,200 | | | | | |
| 65 | 58.4 | 25,300 | 22,900 | 20,400 | 18,200 | 16,000 | 13,100 | | | | | |
| 70 | 55.1 | 21,000 | 18,500 | 16,100 | 14,100 | | | | | | | |
| 75 | 51.7 | 17,200 | 14,900 | | | | | | | | | |
| 80 | 48.0 | 14,000 | | | | | | | | | | |
| 85 | 44.2 | 11,100 | | | | | | | | | | |
| 117' Boom | | | | | | | | | | | | |
| Load Radius (ft.) | Boom Angle (deg) | Jib Length (ft) | | | | | | | | | | |
| | | 75 | 85 | 95 | 105 | 115 | 125 | 135 | 145 | 155 | 165 | 175 |
| 30 | 80.0 | 106,200 * | 102,700 * | 99,200 * | 95,900 * | 92,600 * | 88,600 * | 84,900 * | 81,200 * | 76,500 * | 72,400 * | 68,000 * |
| 32 | 79.0 | 97,300 * | 93,900 * | 90,400 * | 87,400 * | 84,200 * | 80,300 * | 76,700 * | 73,100 * | 68,600 * | 64,800 * | 60,500 * |
| 34 | 78.0 | 89,600 * | 86,400 * | 83,000 * | 80,100 * | 77,100 * | 73,200 * | 69,800 * | 66,300 * | 62,000 * | 58,300 * | 54,200 * |
| 36 | 76.9 | 82,900 * | 79,800 * | 76,500 * | 73,800 * | 70,800 * | 67,000 * | 63,700 * | 60,400 * | 56,200 * | 52,600 * | 48,700 * |
| 38 | 75.9 | 76,200 * | 73,200 * | 70,100 * | 67,400 * | 64,500 * | 60,800 * | 57,700 * | 54,500 * | 50,400 * | 46,900 * | 43,200 * |
| 40 | 74.9 | 69,900 | 67,000 | 64,000 | 61,400 | 58,500 | 55,000 | 52,000 | 48,900 | 44,900 | 41,500 | 38,000 |
| 45 | 72.3 | 56,500 | 53,600 | 50,700 | 48,200 | 45,600 | 42,400 | 39,500 | 36,600 | 32,800 | 29,700 | 26,400 |
| 50 | 69.7 | 46,000 | 43,400 | 40,600 | 38,300 | 35,800 | 32,700 | 30,000 | 27,200 | 23,800 | 20,700 | 17,500 |
| 55 | 67.0 | 37,600 | 35,100 | 32,300 | 30,200 | 27,800 | 24,800 | 22,200 | 19,600 | 16,400 | | |
| 60 | 64.3 | 30,700 | 28,300 | 25,600 | 23,700 | 21,300 | 18,400 | | | | | |
| 65 | 61.5 | 25,300 | 22,900 | 20,400 | 18,400 | 16,200 | 13,600 | | | | | |
| 70 | 58.6 | 20,800 | 18,500 | 16,100 | 14,100 | | | | | | | |
| 75 | 55.6 | 17,100 | 14,900 | | | | | | | | | |
| 80 | 52.5 | 14,000 | | | | | | | | | | |
| 85 | 49.2 | 11,100 | | | | | | | | | | |
| 127' Boom | | | | | | | | | | | | |
| Load Radius (ft.) | Boom Angle (deg) | Jib Length (ft) | | | | | | | | | | |
| | | 75 | 85 | 95 | 105 | 115 | 125 | 135 | 145 | 155 | 165 | 175 |
| 32 | 79.9 | 95,400 * | 92,100 * | 88,600 * | 85,500 * | 82,500 * | 78,500 * | 75,200 * | 71,500 * | 67,300 * | 63,400 * | 59,200 * |
| 34 | 78.9 | 87,300 * | 84,300 * | 81,000 * | 78,000 * | 75,000 * | 71,300 * | 67,800 * | 64,400 * | 60,300 * | 56,600 * | 52,700 * |
| 36 | 78.0 | 80,700 * | 77,700 * | 74,500 * | 71,700 * | 68,800 * | 65,100 * | 61,800 * | 58,500 * | 54,500 * | 50,900 * | 47,200 * |
| 38 | 77.1 | 74,100 * | 71,200 * | 68,100 * | 65,300 * | 62,600 * | 59,000 * | 55,900 * | 52,700 * | 48,800 * | 45,300 * | 41,600 * |
| 40 | 76.1 | 68,100 | 65,200 | 62,200 | 59,500 | 56,900 | 53,400 | 50,400 | 47,300 | 43,600 | 40,100 | 36,600 |
| 45 | 73.8 | 55,800 | 53,100 | 50,200 | 47,800 | 45,300 | 42,000 | 39,300 | 36,400 | 32,800 | 29,700 | 26,300 |
| 50 | 71.4 | 45,600 | 42,900 | 40,200 | 37,900 | 35,500 | 32,500 | 29,800 | 27,100 | 23,700 | 20,800 | 17,700 |
| 55 | 69.0 | 37,200 | 34,600 | 32,100 | 29,900 | 27,500 | 24,700 | 22,100 | 19,500 | 16,200 | | |
| 60 | 66.5 | 30,500 | 28,000 | 25,600 | 23,400 | 21,200 | 18,400 | | | | | |
| 65 | 63.9 | 25,100 | 22,700 | 20,200 | 18,200 | 16,000 | 13,400 | | | | | |
| 70 | 61.4 | 20,600 | 18,300 | 15,900 | 14,100 | | | | | | | |
| 75 | 58.7 | 16,700 | 14,600 | | | | | | | | | |



Rated Loads in Pounds for CK1600-II Crane Boom with Luffing Jib Attached but not Used

LUFFING JIB ATTACHED TO BOOM AT 25 DEGREE OFFSET ANGLE

11 Counterweights + 2 Low Weights

| 137' Boom | | | | | | | | | | | | |
|-------------------|------------------|-----------------|----------|----------|----------|----------|----------|----------|----------|----------|----------|----------|
| Load Radius (ft.) | Boom Angle (deg) | Jib Length (ft) | | | | | | | | | | |
| | | 75 | 85 | 95 | 105 | 115 | 125 | 135 | 145 | 155 | 165 | 175 |
| 34 | 79.7 | 85,500 * | 82,300 * | 79,000 * | 76,100 * | 73,300 * | 69,600 * | 66,300 * | 62,800 * | 58,700 * | 54,900 * | 51,200 * |
| 36 | 78.9 | 79,100 * | 76,000 * | 72,800 * | 70,000 * | 67,200 * | 63,700 * | 60,500 * | 57,100 * | 53,100 * | 49,600 * | 45,900 * |
| 38 | 78.0 | 72,700 * | 69,700 * | 66,600 * | 63,900 * | 61,200 * | 57,800 * | 54,600 * | 51,500 * | 47,600 * | 44,200 * | 40,600 * |
| 40 | 77.2 | 66,900 | 64,000 | 61,000 | 58,400 | 55,700 | 52,400 | 49,400 | 46,300 | 42,600 | 39,300 | 35,800 |
| 45 | 75.0 | 55,600 | 52,900 | 50,000 | 47,800 | 45,100 | 42,000 | 39,300 | 36,400 | 32,900 | 29,700 | 26,600 |
| 50 | 72.8 | 45,600 | 42,900 | 40,200 | 38,000 | 35,600 | 32,600 | 30,000 | 27,300 | 23,900 | 21,100 | 18,000 |
| 55 | 70.6 | 37,200 | 34,600 | 32,100 | 29,900 | 27,700 | 24,700 | 22,300 | 19,800 | 16,500 | | |
| 60 | 68.3 | 30,400 | 28,000 | 25,600 | 23,400 | 21,300 | 18,600 | 16,200 | | | | |
| 65 | 66.0 | 24,900 | 22,700 | 20,200 | 18,200 | 16,200 | 13,600 | 11,200 | | | | |
| 70 | 63.7 | 20,500 | 18,300 | 15,900 | 14,100 | | | | | | | |
| 75 | 61.3 | 16,700 | 14,500 | | | | | | | | | |

| 147' Boom | | | | | | | | | | | | |
|-------------------|------------------|-----------------|----------|----------|----------|----------|----------|----------|----------|----------|----------|----------|
| Load Radius (ft.) | Boom Angle (deg) | Jib Length (ft) | | | | | | | | | | |
| | | 75 | 85 | 95 | 105 | 115 | 125 | 135 | 145 | 155 | 165 | 175 |
| 36 | 79.7 | 77,500 * | 74,700 * | 71,400 * | 68,800 * | 66,000 * | 62,300 * | 59,300 * | 56,000 * | 52,100 * | 48,600 * | 44,900 * |
| 38 | 78.9 | 71,500 * | 68,800 * | 65,600 * | 63,000 * | 60,300 * | 56,800 * | 53,900 * | 50,700 * | 46,900 * | 43,500 * | 39,900 * |
| 40 | 78.1 | 66,000 * | 63,400 * | 60,300 * | 57,700 * | 55,100 * | 51,800 * | 48,900 * | 45,900 * | 42,200 * | 38,900 * | 35,400 * |
| 45 | 76.0 | 55,100 * | 52,500 * | 49,600 * | 47,300 * | 44,800 * | 41,500 * | 38,900 * | 36,200 * | 32,600 * | 29,700 * | 26,300 * |
| 50 | 74.0 | 45,400 | 42,900 | 40,200 | 38,000 | 35,700 | 32,700 | 30,200 | 27,500 | 24,100 | 21,400 | 18,400 |
| 55 | 72.0 | 37,100 | 34,800 | 32,100 | 30,000 | 27,800 | 25,000 | 22,600 | 20,000 | 16,900 | | |
| 60 | 69.9 | 30,200 | 28,000 | 25,400 | 23,400 | 21,300 | 18,600 | 16,200 | | | | |
| 65 | 67.8 | 24,900 | 22,700 | 20,200 | 18,200 | 16,200 | 13,600 | 11,400 | | | | |
| 70 | 65.6 | 20,400 | 18,200 | 15,900 | 13,900 | | | | | | | |
| 75 | 63.4 | 16,500 | 14,400 | | | | | | | | | |

| 157' Boom | | | | | | | | | | | | |
|-------------------|------------------|-----------------|----------|----------|----------|----------|----------|----------|----------|----------|----------|----------|
| Load Radius (ft.) | Boom Angle (deg) | Jib Length (ft) | | | | | | | | | | |
| | | 75 | 85 | 95 | 105 | 115 | 125 | 135 | 145 | 155 | 165 | 175 |
| 38 | 79.6 | 69,900 * | 67,000 * | 64,000 * | 61,400 * | 58,600 * | 55,300 * | 52,300 * | 49,200 * | 45,400 * | 42,200 * | 38,700 * |
| 40 | 78.8 | 64,900 * | 62,100 * | 59,200 * | 56,600 * | 54,000 * | 50,700 * | 47,800 * | 44,800 * | 41,100 * | 38,000 * | 34,500 * |
| 45 | 77.0 | 53,800 * | 51,100 * | 48,500 * | 46,000 * | 43,600 * | 40,600 * | 37,800 * | 35,100 * | 31,700 * | 28,600 * | 25,500 * |
| 50 | 75.1 | 44,800 | 42,300 | 39,800 | 37,500 | 35,200 | 32,300 | 29,700 | 27,100 | 23,900 | 21,100 | 18,200 |
| 55 | 73.2 | 36,900 | 34,600 | 32,100 | 30,000 | 27,800 | 25,000 | 22,600 | 20,100 | 17,000 | | |
| 60 | 71.2 | 30,000 | 27,800 | 25,400 | 23,400 | 21,300 | 18,600 | 16,200 | | | | |
| 65 | 69.3 | 24,600 | 22,400 | 20,000 | 18,200 | 16,200 | 13,600 | 11,400 | | | | |
| 70 | 67.3 | 20,200 | 18,100 | 15,800 | 13,900 | | | | | | | |
| 75 | 65.2 | 16,300 | 14,300 | | | | | | | | | |

| CK1600-II Luffing Jib Rated Loads in Pounds | | | | | | | | | | | | | | |
|---|------------|----------|--------|--------|--------|--------|-------------------|------------|----------|--------|--------|--------|--------|--|
| 11 Counterweights + 2 Low Weights | | | | | | | | | | | | | | |
| 107' Boom | | | | | | | | | | | | | | |
| Load Radius (ft.) | 75 ft Jib | | | | | | Load Radius (ft.) | 85 ft Jib | | | | | | |
| | Boom Angle | | | | | | | Boom Angle | | | | | | |
| | 88 | 83 | 78 | 73 | 68 | 63 | | 88 | 83 | 78 | 73 | 68 | 63 | |
| 40 | 79,000 * | | | | | | 40 | | | | | | | |
| 45 | 72,000 * | | | | | | 45 | | | | | | | |
| 50 | 65,000 * | | | | | | 50 | 66,000 * | | | | | | |
| 55 | 59,000 * | | | | | | 55 | 59,000 * | | | | | | |
| 60 | 52,200 * | 57,200 | | | | | 60 | 52,900 * | 56,700 | | | | | |
| 65 | 45,400 * | 51,500 | | | | | 65 | 46,200 * | 51,400 | | | | | |
| 70 | 39,900 * | 46,800 * | 44,200 | | | | 70 | 40,700 * | 46,800 | | | | | |
| 75 | 35,000 * | 42,700 * | 40,600 | | | | 75 | 36,100 * | 42,800 | | | | | |
| 80 | 29,700 * | 39,200 * | 37,400 | | | | 80 | 32,100 * | 39,400 | 37,000 | | | | |
| 85 | | 35,200 * | 34,700 | 32,100 | | | 85 | 28,800 * | 36,400 | 34,200 | | | | |
| 90 | | 31,000 * | 32,200 | 30,200 | | | 90 | | 33,200 * | 31,800 | | | | |
| 95 | | | 30,000 | 28,100 | | | 95 | | 29,700 * | 29,700 | 27,900 | | | |
| 100 | | | 28,100 | 26,300 | 24,200 | | 100 | | 26,400 * | 27,700 | 26,100 | | | |
| 105 | | | 26,300 | 24,600 | 23,100 | | 105 | | 20,700 * | 26,100 | 24,500 | 22,100 | | |
| 110 | | | | 23,100 | 21,800 | | 110 | | | 24,500 | 23,000 | 21,300 | | |
| 115 | | | | | 20,500 | 18,600 | 115 | | | 23,000 | 21,700 | 20,100 | | |
| 120 | | | | | 19,400 | 17,900 | 120 | | | | 20,500 | 19,000 | 17,100 | |
| 125 | | | | | | 16,900 | 125 | | | | | 17,900 | 16,600 | |
| 130 | | | | | | | 130 | | | | | | 15,700 | |
| 135 | | | | | | | 135 | | | | | | 14,800 | |
| 140 | | | | | | | 140 | | | | | | | |
| 145 | | | | | | | 145 | | | | | | | |
| 150 | | | | | | | 150 | | | | | | | |
| 155 | | | | | | | 155 | | | | | | | |
| 160 | | | | | | | 160 | | | | | | | |
| 165 | | | | | | | 165 | | | | | | | |
| 170 | | | | | | | 170 | | | | | | | |
| 107' Boom | | | | | | | | | | | | | | |
| Load Radius (ft.) | 95 ft Jib | | | | | | Load Radius (ft.) | 105 ft Jib | | | | | | |
| | Boom Angle | | | | | | | Boom Angle | | | | | | |
| | 88 | 83 | 78 | 73 | 68 | 63 | | 88 | 83 | 78 | 73 | 68 | 63 | |
| 40 | | | | | | 40 | | | | | | | | |
| 45 | | | | | | 45 | | | | | | | | |
| 50 | 66,000 * | | | | | 50 | 64,000 * | | | | | | | |
| 55 | 59,000 * | | | | | 55 | 59,000 * | | | | | | | |
| 60 | 53,100 * | | | | | 60 | 53,300 * | | | | | | | |
| 65 | 46,500 * | | | | | 65 | 46,700 * | | | | | | | |
| 70 | 41,000 * | 46,400 | | | | 70 | 41,200 * | 46,100 | | | | | | |
| 75 | 36,500 * | 42,500 | | | | 75 | 36,800 * | 42,200 | | | | | | |
| 80 | 32,600 * | 39,100 | 36,300 | | | 80 | 33,000 * | 38,900 | | | | | | |
| 85 | 29,300 * | 36,100 | 33,900 | | | 85 | 29,700 * | 35,900 | 33,200 | | | | | |
| 90 | 26,400 * | 33,300 * | 31,500 | | | 90 | 26,800 * | 33,100 * | 31,100 | | | | | |
| 95 | 23,800 * | 30,400 * | 29,400 | | | 95 | 24,400 * | 30,600 * | 29,100 | | | | | |
| 100 | | 27,300 * | 27,400 | 25,700 | | 100 | 22,000 * | 27,900 * | 27,200 | | | | | |
| 105 | | 24,600 * | 25,700 | 24,100 | | 105 | | 25,300 * | 25,500 | 23,500 | | | | |
| 110 | | 21,800 * | 24,200 | 22,700 | | 110 | | 22,900 * | 24,000 | 22,400 | | | | |
| 115 | | | 22,800 | 21,300 | 19,400 | 115 | | 20,900 * | 22,500 | 21,100 | | | | |
| 120 | | | 21,400 | 20,100 | 18,700 | 120 | | 18,500 * | 21,300 | 19,900 | 18,100 | | | |
| 125 | | | | 19,000 | 17,600 | 15,700 | 125 | | | 20,100 | 18,900 | 17,400 | | |
| 130 | | | | 18,000 | 16,700 | 15,300 | 130 | | | 19,000 | 17,800 | 16,500 | | |
| 135 | | | | | 15,800 | 14,500 | 135 | | | | 16,900 | 15,600 | 13,700 | |
| 140 | | | | | 14,900 | 13,700 | 140 | | | | | 14,700 | 13,500 | |
| 145 | | | | | | 13,100 | 145 | | | | | 14,100 | 12,800 | |
| 150 | | | | | | 12,400 | 150 | | | | | 13,300 | 12,200 | |
| 155 | | | | | | | 155 | | | | | | 11,500 | |
| 160 | | | | | | | 160 | | | | | | | |
| 165 | | | | | | | 165 | | | | | | | |
| 170 | | | | | | | 170 | | | | | | | |



CK1600-II Luffing Jib Rated Loads in Pounds

11 Counterweights + 2 Low Weights

| 107' Boom | | | | | | | 125 ft Jib | | | | | | |
|-------------------|------------|----------|----------|--------|--------|--------|-------------------|------------|----------|----------|--------|--------|--------|
| Load Radius (ft.) | 115 ft Jib | | | | | | Load Radius (ft.) | 125 ft Jib | | | | | |
| | Boom Angle | | | | | | | Boom Angle | | | | | |
| | 88 | 83 | 78 | 73 | 68 | 63 | | 88 | 83 | 78 | 73 | 68 | 63 |
| 50 | | | | | | | 50 | | | | | | |
| 55 | 56,500 * | | | | | | 55 | 51,700 * | | | | | |
| 60 | 53,000 * | | | | | | 60 | 49,500 * | | | | | |
| 65 | 46,700 * | | | | | | 65 | 46,000 * | | | | | |
| 70 | 41,400 * | | | | | | 70 | 41,800 * | | | | | |
| 75 | 37,000 * | 41,900 | | | | | 75 | 37,200 * | 41,300 | | | | |
| 80 | 33,200 * | 38,600 | | | | | 80 | 33,500 * | 38,200 | | | | |
| 85 | 29,900 * | 35,700 | | | | | 85 | 30,200 * | 35,300 | | | | |
| 90 | 27,100 * | 32,900 * | | | | | 90 | 27,300 * | 32,400 * | | | | |
| 95 | 24,600 * | 30,400 * | 28,800 | | | | 95 | 24,900 * | 29,900 * | 28,100 | | | |
| 100 | 22,400 * | 28,200 * | 27,000 | | | | 100 | 22,700 * | 27,700 * | 26,800 | | | |
| 105 | 20,500 * | 25,500 * | 25,200 | | | | 105 | 20,700 * | 25,500 * | 25,200 | | | |
| 110 | 18,700 * | 23,300 * | 23,800 | 22,200 | | | 110 | 18,900 * | 23,300 * | 23,600 | | | |
| 115 | 16,900 * | 21,300 * | 22,300 | 20,900 | | | 115 | 17,100 * | 21,300 * | 22,200 | 20,200 | | |
| 120 | | 19,400 * | 21,100 | 19,700 | | | 120 | 15,600 * | 19,600 * | 21,000 | 19,400 | | |
| 125 | | 17,800 * | 19,900 | 18,700 | 16,600 | | 125 | 14,100 * | 17,800 * | 19,900 | 18,200 | | |
| 130 | | 15,600 * | 18,900 | 17,700 | 16,200 | | 130 | | 16,500 * | 18,800 | 17,300 | | |
| 135 | | | 17,900 | 16,700 | 15,400 | | 135 | | 14,900 * | 17,800 | 16,400 | 14,900 | |
| 140 | | | 16,300 * | 15,900 | 14,500 | 12,600 | 140 | | 13,200 * | 16,900 | 15,500 | 14,200 | |
| 145 | | | | 15,100 | 13,800 | 12,500 | 145 | | | 15,900 * | 14,700 | 13,400 | |
| 150 | | | | | 13,200 | 11,900 | 150 | | | 14,500 * | 14,100 | 12,700 | 11,400 |
| 155 | | | | | 12,500 | 11,200 | 155 | | | | 13,400 | 12,200 | 10,800 |
| 160 | | | | | | 10,600 | 160 | | | | | 11,500 | 10,200 |
| 165 | | | | | | 10,100 | 165 | | | | | 11,000 | 9,700 |
| 170 | | | | | | | 170 | | | | | | 9,100 |
| 175 | | | | | | | 175 | | | | | | 8,700 |
| 180 | | | | | | | 180 | | | | | | |

| 107' Boom | | | | | | | 145 ft Jib | | | | | | |
|-------------------|------------|----------|----------|--------|--------|-------|-------------------|------------|----------|----------|--------|--------|-------|
| Load Radius (ft.) | 135 ft Jib | | | | | | Load Radius (ft.) | 145 ft Jib | | | | | |
| | Boom Angle | | | | | | | Boom Angle | | | | | |
| | 88 | 83 | 78 | 73 | 68 | 63 | | 88 | 83 | 78 | 73 | 68 | 63 |
| 60 | 46,000 * | | | | | | 60 | 41,600 * | | | | | |
| 65 | 44,000 * | | | | | | 65 | 40,000 * | | | | | |
| 70 | 41,800 * | | | | | | 70 | 38,100 * | | | | | |
| 75 | 37,200 * | | | | | | 75 | 36,800 * | | | | | |
| 80 | 33,500 * | 37,600 | | | | | 80 | 34,600 * | | | | | |
| 85 | 30,200 * | 35,000 | | | | | 85 | 30,800 * | | | | | |
| 90 | 27,300 * | 32,200 * | | | | | 90 | 27,900 * | 32,000 * | | | | |
| 95 | 24,900 * | 29,700 * | | | | | 95 | 25,300 * | 29,500 * | | | | |
| 100 | 22,700 * | 27,500 * | 26,000 | | | | 100 | 23,100 * | 27,300 * | | | | |
| 105 | 20,700 * | 25,500 * | 24,900 | | | | 105 | 21,100 * | 25,300 * | | | | |
| 110 | 18,900 * | 23,300 * | 23,300 | | | | 110 | 19,400 * | 23,100 * | 23,100 | | | |
| 115 | 17,400 * | 21,300 * | 22,000 | | | | 115 | 17,800 * | 21,300 * | 21,800 | | | |
| 120 | 15,800 * | 19,600 * | 20,800 | 18,800 | | | 120 | 16,500 * | 19,600 * | 20,600 | | | |
| 125 | 14,500 * | 18,000 * | 19,700 | 18,000 | | | 125 | 15,200 * | 18,000 * | 19,400 | | | |
| 130 | 13,200 * | 16,500 * | 18,600 | 17,000 | | | 130 | 13,800 * | 16,500 * | 18,400 | 16,700 | | |
| 135 | 11,900 * | 15,200 * | 17,600 | 16,200 | | | 135 | 12,700 * | 15,200 * | 17,400 | 15,800 | | |
| 140 | | 14,100 * | 16,700 | 15,300 | 13,600 | | 140 | 11,600 * | 14,100 * | 16,500 | 15,100 | | |
| 145 | | 12,700 * | 15,900 | 14,500 | 13,200 | | 145 | | 13,000 * | 15,700 | 14,300 | | |
| 150 | | | 14,900 * | 13,800 | 12,500 | | 150 | | 11,900 * | 14,900 | 13,600 | 12,200 | |
| 155 | | | 13,600 * | 13,200 | 11,900 | 9,800 | 155 | | 11,000 * | 13,900 * | 13,000 | 11,500 | |
| 160 | | | 12,300 * | 12,500 | 11,300 | 9,800 | 160 | | 9,200 * | 12,700 * | 12,300 | 11,000 | 8,900 |
| 165 | | | | 12,000 | 10,600 | 9,300 | 165 | | | 11,600 * | 11,700 | 10,400 | 8,900 |
| 170 | | | | 11,300 | 10,100 | 8,900 | 170 | | | | 11,200 | 9,900 | 8,500 |
| 175 | | | | | 9,700 | 8,300 | 175 | | | | 10,600 | 9,300 | 8,100 |
| 180 | | | | | | 7,900 | 180 | | | | | 8,900 | 7,700 |
| 185 | | | | | | 7,400 | 185 | | | | | 8,400 | 7,200 |
| 190 | | | | | | | 190 | | | | | | 6,800 |
| 195 | | | | | | | 195 | | | | | | 6,500 |



| CK1600-II Luffing Jib Rated Loads in Pounds | | | | | | | | | | | | | |
|---|------------|----------|----------|--------|--------|-------|-------------------|------------|----------|----------|--------|-------|----|
| 11 Counterweights + 2 Low Weights | | | | | | | | | | | | | |
| 107' Boom | | | | | | | | | | | | | |
| Load Radius (ft.) | 155 ft Jib | | | | | | Load Radius (ft.) | 165 ft Jib | | | | | |
| | Boom Angle | | | | | | | Boom Angle | | | | | |
| | 88 | 83 | 78 | 73 | 68 | 63 | | 88 | 83 | 78 | 73 | 68 | 63 |
| 70 | 35,800 * | | | | | | 70 | 32,000 * | | | | | |
| 75 | 34,200 * | | | | | | 75 | 31,000 * | | | | | |
| 80 | 32,800 * | | | | | | 80 | 29,800 * | | | | | |
| 85 | 30,400 * | | | | | | 85 | 28,500 * | | | | | |
| 90 | 27,500 * | 31,100 * | | | | | 90 | 27,100 * | | | | | |
| 95 | 25,100 * | 29,300 * | | | | | 95 | 24,900 * | 29,100 * | | | | |
| 100 | 22,900 * | 26,800 * | | | | | 100 | 22,700 * | 26,600 * | | | | |
| 105 | 20,900 * | 24,900 * | 23,500 | | | | 105 | 20,700 * | 24,600 * | | | | |
| 110 | 19,100 * | 22,900 * | 22,800 | | | | 110 | 19,100 * | 22,900 * | | | | |
| 115 | 17,600 * | 20,900 * | 21,300 | | | | 115 | 17,600 * | 21,100 * | 21,000 | | | |
| 120 | 16,300 * | 19,400 * | 20,100 | | | | 120 | 16,200 * | 19,400 * | 19,900 | | | |
| 125 | 14,900 * | 17,800 * | 19,000 | | | | 125 | 14,700 * | 17,800 * | 18,800 | | | |
| 130 | 13,800 * | 16,300 * | 18,000 | | | | 130 | 13,600 * | 16,500 * | 17,700 | | | |
| 135 | 12,700 * | 15,200 * | 17,000 | 15,200 | | | 135 | 12,500 * | 15,200 * | 16,800 | 14,500 | | |
| 140 | 11,600 * | 13,800 * | 16,200 | 14,700 | | | 140 | 11,600 * | 13,800 * | 15,900 | 14,400 | | |
| 145 | 10,800 * | 12,700 * | 15,400 | 13,900 | | | 145 | 10,500 * | 12,700 * | 15,100 | 13,600 | | |
| 150 | 9,700 * | 11,900 * | 14,600 | 13,200 | | | 150 | 9,200 * | 11,900 * | 14,300 | 13,000 | | |
| 155 | 8,300 * | 11,000 * | 13,800 | 12,500 | 10,800 | | 155 | | 11,000 * | 13,600 | 12,300 | | |
| 160 | | 9,900 * | 12,700 * | 12,000 | 10,500 | | 160 | | 10,100 * | 12,700 * | 11,600 | 9,800 | |
| 165 | | 9,000 * | 11,600 * | 11,300 | 10,000 | | 165 | | 9,200 * | 11,600 * | 11,100 | 9,700 | |
| 170 | | | 10,800 * | 10,800 | 9,400 | 7,800 | 170 | | 8,300 * | 10,800 * | 10,500 | 9,100 | |
| 175 | | | 9,900 * | 10,200 | 8,900 | 7,600 | 175 | | | 9,900 * | 10,000 | 8,500 | |
| 180 | | | | 9,800 | 8,400 | 7,100 | 180 | | | 9,200 * | 9,400 | 8,100 | |
| 185 | | | | 9,200 | 8,000 | 6,800 | 185 | | | 8,300 * | 9,000 | 7,700 | |
| 190 | | | | 8,800 | 7,600 | 6,300 | 190 | | | | 8,500 | 7,200 | |
| 195 | | | | | 7,100 | 6,000 | 195 | | | | 8,100 | 6,900 | |
| 200 | | | | | | 5,700 | 200 | | | | 7,700 | 6,500 | |
| 205 | | | | | | | 205 | | | | | 6,100 | |
| 210 | | | | | | | 210 | | | | | 5,800 | |

| 107' Boom | | | | | | | | | | | | | |
|-------------------|------------|----------|----------|--------|-------|----|--|--|--|--|--|--|--|
| Load Radius (ft.) | 175 ft Jib | | | | | | | | | | | | |
| | Boom Angle | | | | | | | | | | | | |
| | 88 | 83 | 78 | 73 | 68 | 63 | | | | | | | |
| 70 | | | | | | | | | | | | | |
| 75 | 28,800 * | | | | | | | | | | | | |
| 80 | 27,500 * | | | | | | | | | | | | |
| 85 | 26,700 * | | | | | | | | | | | | |
| 90 | 25,500 * | | | | | | | | | | | | |
| 95 | 24,100 * | 28,200 | | | | | | | | | | | |
| 100 | 22,400 * | 27,100 | | | | | | | | | | | |
| 105 | 20,500 * | 25,500 | | | | | | | | | | | |
| 110 | 18,900 * | 24,000 * | | | | | | | | | | | |
| 115 | 17,400 * | 22,200 * | | | | | | | | | | | |
| 120 | 15,800 * | 20,500 * | 19,100 | | | | | | | | | | |
| 125 | 14,700 * | 18,700 * | 18,500 | | | | | | | | | | |
| 130 | 13,400 * | 17,100 * | 17,500 | | | | | | | | | | |
| 135 | 12,500 * | 15,800 * | 16,500 | | | | | | | | | | |
| 140 | 11,200 * | 14,700 * | 15,600 | 13,400 | | | | | | | | | |
| 145 | | 13,400 * | 14,800 | 13,400 | | | | | | | | | |
| 150 | | 12,500 * | 14,100 | 12,600 | | | | | | | | | |
| 155 | | 11,400 * | 13,400 | 12,100 | | | | | | | | | |
| 160 | | 10,500 * | 12,600 | 11,400 | 9,100 | | | | | | | | |
| 165 | | 9,000 * | 11,600 * | 10,800 | 9,000 | | | | | | | | |
| 170 | | | 10,800 * | 10,200 | 8,800 | | | | | | | | |
| 175 | | | 9,900 * | 9,700 | 8,300 | | | | | | | | |
| 180 | | | 9,000 * | 9,100 | 7,800 | | | | | | | | |
| 185 | | | | 8,700 | 7,300 | | | | | | | | |
| 190 | | | | 8,200 | 7,000 | | | | | | | | |
| 195 | | | | 7,800 | 6,600 | | | | | | | | |
| 200 | | | | 7,300 | 6,200 | | | | | | | | |
| 205 | | | | | 5,800 | | | | | | | | |



CK1600-II Luffing Jib Rated Loads in Pounds

11 Counterweights + 2 Low Weights

| 117' Boom | | | | | | | 85 ft Jib | | | | | | | |
|-------------------|------------|----------|--------|--------|--------|--------|-------------------|------------|----------|--------|--------|--------|--------|--|
| Load Radius (ft.) | 75 ft Jib | | | | | | Load Radius (ft.) | 85 ft Jib | | | | | | |
| | Boom Angle | | | | | | | Boom Angle | | | | | | |
| | 88 | 83 | 78 | 73 | 68 | 63 | | 88 | 83 | 78 | 73 | 68 | 63 | |
| 40 | 78,000 * | | | | | | 40 | | | | | | | |
| 45 | 71,000 * | | | | | | 45 | | | | | | | |
| 50 | 64,000 * | | | | | | 50 | 64,500 * | | | | | | |
| 55 | 58,000 * | | | | | | 55 | 59,000 * | | | | | | |
| 60 | 52,600 * | 56,600 | | | | | 60 | 53,300 * | 56,200 | | | | | |
| 65 | 45,800 * | 51,100 | | | | | 65 | 46,500 * | 51,000 | | | | | |
| 70 | 40,100 * | 46,500 | | | | | 70 | 41,000 * | 46,400 | | | | | |
| 75 | 35,200 * | 42,500 | 40,000 | | | | 75 | 36,300 * | 42,500 | | | | | |
| 80 | | 39,200 | 36,800 | | | | 80 | 32,400 * | 39,100 | 36,400 | | | | |
| 85 | | 36,200 | 34,100 | | | | 85 | 28,800 * | 36,200 | 33,700 | | | | |
| 90 | | 31,900 * | 31,700 | | | | 90 | 24,900 * | 33,600 | 31,300 | | | | |
| 95 | | | 29,500 | 27,600 | | | 95 | | 30,400 * | 29,200 | 26,600 | | | |
| 100 | | | 27,600 | 25,900 | | | 100 | | 27,100 * | 27,300 | 25,400 | | | |
| 105 | | | 25,900 | 24,200 | | | 105 | | 22,400 * | 25,600 | 23,900 | | | |
| 110 | | | | 22,800 | 21,000 | | 110 | | | 24,100 | 22,400 | | | |
| 115 | | | | | 19,800 | | 115 | | | | 21,100 | 19,200 | | |
| 120 | | | | | 18,700 | 17,100 | 120 | | | | 19,900 | 18,200 | | |
| 125 | | | | | | 16,200 | 125 | | | | | 17,300 | 15,300 | |
| 130 | | | | | | 15,300 | 130 | | | | | 16,400 | 14,900 | |
| 135 | | | | | | | 135 | | | | | | 14,100 | |
| 140 | | | | | | | 140 | | | | | | 13,400 | |
| 145 | | | | | | | 145 | | | | | | 12,600 | |
| 150 | | | | | | | 150 | | | | | | | |
| 155 | | | | | | | 155 | | | | | | | |

| 117' Boom | | | | | | | 105 ft Jib | | | | | | | |
|-------------------|------------|----------|--------|--------|--------|--------|-------------------|------------|----------|--------|--------|--------|--------|--|
| Load Radius (ft.) | 95 ft Jib | | | | | | Load Radius (ft.) | 105 ft Jib | | | | | | |
| | Boom Angle | | | | | | | Boom Angle | | | | | | |
| | 88 | 83 | 78 | 73 | 68 | 63 | | 88 | 83 | 78 | 73 | 68 | 63 | |
| 40 | | | | | | | 40 | | | | | | | |
| 45 | | | | | | | 45 | | | | | | | |
| 50 | 64,000 * | | | | | | 50 | | | | | | | |
| 55 | 58,300 * | | | | | | 55 | 58,000 * | | | | | | |
| 60 | 53,200 * | | | | | | 60 | 53,500 * | | | | | | |
| 65 | 46,900 * | 50,300 | | | | | 65 | 47,100 * | | | | | | |
| 70 | 41,400 * | 46,000 | | | | | 70 | 41,600 * | 45,400 | | | | | |
| 75 | 36,800 * | 42,100 | | | | | 75 | 37,000 * | 41,800 | | | | | |
| 80 | 32,800 * | 38,800 | | | | | 80 | 33,200 * | 38,500 | | | | | |
| 85 | 29,500 * | 35,900 | 33,200 | | | | 85 | 29,900 * | 35,600 | 32,700 | | | | |
| 90 | 26,400 * | 33,200 | 30,900 | | | | 90 | 27,100 * | 33,000 | 30,600 | | | | |
| 95 | 23,800 * | 31,000 | 28,800 | | | | 95 | 24,400 * | 30,800 | 28,500 | | | | |
| 100 | | 28,100 * | 27,000 | 24,400 | | | 100 | 22,200 * | 28,600 * | 26,600 | | | | |
| 105 | | 25,300 * | 25,300 | 23,400 | | | 105 | 20,000 * | 25,700 * | 25,000 | 22,700 | | | |
| 110 | | 22,700 * | 23,800 | 22,100 | | | 110 | | 23,500 * | 23,500 | 21,800 | | | |
| 115 | | | 22,300 | 20,800 | 18,500 | | 115 | | 21,300 * | 22,100 | 20,600 | | | |
| 120 | | | 21,100 | 19,600 | 17,900 | | 120 | | 19,100 * | 20,900 | 19,400 | | | |
| 125 | | | 19,900 | 18,600 | 16,900 | | 125 | | 15,800 * | 19,800 | 18,400 | 16,000 | | |
| 130 | | | | 17,500 | 16,000 | 13,900 | 130 | | | 18,700 | 17,400 | 15,700 | | |
| 135 | | | | | 15,200 | 13,700 | 135 | | | 17,700 | 16,500 | 14,900 | | |
| 140 | | | | | 14,400 | 13,000 | 140 | | | | 15,600 | 14,200 | 12,600 | |
| 145 | | | | | 13,600 | 12,200 | 145 | | | | 14,800 | 13,400 | 12,000 | |
| 150 | | | | | | 11,500 | 150 | | | | | 12,700 | 11,300 | |
| 155 | | | | | | | 155 | | | | | | 10,600 | |
| 160 | | | | | | | 160 | | | | | | 10,100 | |
| 165 | | | | | | | 165 | | | | | | 9,500 | |
| 170 | | | | | | | 170 | | | | | | | |
| 175 | | | | | | | 175 | | | | | | | |



| CK1600-II Luffing Jib Rated Loads in Pounds | | | | | | | | | | | | | |
|--|------------|----------|----------|--------|--------|--------|-------------------|------------|----------|----------|--------|--------|-------|
| 11 Counterweights + 2 Low Weights | | | | | | | | | | | | | |
| 117' Boom | | | | | | | | | | | | | |
| Load Radius (ft.) | 115 ft Jib | | | | | | Load Radius (ft.) | 125 ft Jib | | | | | |
| | Boom Angle | | | | | | | Boom Angle | | | | | |
| | 88 | 83 | 78 | 73 | 68 | 63 | | 88 | 83 | 78 | 73 | 68 | 63 |
| 55 | 53,800 * | | | | | | 55 | 48,300 * | | | | | |
| 60 | 50,900 * | | | | | | 60 | 46,400 * | | | | | |
| 65 | 47,100 * | | | | | | 65 | 45,000 * | | | | | |
| 70 | 41,600 * | | | | | | 70 | 41,000 * | | | | | |
| 75 | 37,200 * | 41,500 | | | | | 75 | 37,400 * | | | | | |
| 80 | 33,200 * | 38,200 | | | | | 80 | 33,700 * | 37,500 | | | | |
| 85 | 30,200 * | 35,300 | | | | | 85 | 30,400 * | 35,000 | | | | |
| 90 | 27,300 * | 32,800 | | | | | 90 | 27,500 * | 32,500 | | | | |
| 95 | 24,600 * | 30,600 | 28,300 | | | | 95 | 24,900 * | 30,300 | | | | |
| 100 | 22,400 * | 28,500 * | 26,400 | | | | 100 | 22,700 * | 28,100 * | | | | |
| 105 | 20,500 * | 26,200 * | 24,800 | | | | 105 | 20,700 * | 26,000 * | 24,600 | | | |
| 110 | 18,700 * | 23,800 * | 23,200 | 20,900 | | | 110 | 18,900 * | 23,800 * | 23,200 | | | |
| 115 | 16,900 * | 21,800 * | 21,900 | 20,200 | | | 115 | 17,400 * | 21,800 * | 21,800 | 19,200 | | |
| 120 | | 19,800 * | 20,700 | 19,100 | | | 120 | 15,800 * | 20,000 * | 20,600 | 18,700 | | |
| 125 | | 18,000 * | 19,600 | 18,000 | | | 125 | 14,300 * | 18,200 * | 19,500 | 17,700 | | |
| 130 | | 16,500 * | 18,500 | 17,100 | | | 130 | | 16,700 * | 18,500 | 16,700 | | |
| 135 | | | 17,600 | 16,300 | 14,700 | | 135 | | 15,400 * | 17,500 | 15,800 | 13,600 | |
| 140 | | | 16,700 | 15,400 | 13,900 | | 140 | | 13,800 * | 16,600 | 15,100 | 13,500 | |
| 145 | | | | 14,600 | 13,200 | 11,000 | 145 | | | 15,700 | 14,300 | 12,800 | |
| 150 | | | | 13,900 | 12,500 | 11,000 | 150 | | | | 13,600 | 12,100 | |
| 155 | | | | | 12,000 | 10,400 | 155 | | | | 13,000 | 11,500 | 9,900 |
| 160 | | | | | 11,300 | 9,900 | 160 | | | | 12,300 | 10,900 | 9,300 |
| 165 | | | | | 10,800 | 9,300 | 165 | | | | | 10,300 | 8,900 |
| 170 | | | | | | 8,800 | 170 | | | | | | 8,300 |
| 175 | | | | | | | 175 | | | | | | 7,900 |
| 180 | | | | | | | 180 | | | | | | 7,400 |
| 185 | | | | | | | 185 | | | | | | |
| 117' Boom | | | | | | | | | | | | | |
| Load Radius (ft.) | 135 ft Jib | | | | | | Load Radius (ft.) | 145 ft Jib | | | | | |
| | Boom Angle | | | | | | | Boom Angle | | | | | |
| | 88 | 83 | 78 | 73 | 68 | 63 | | 88 | 83 | 78 | 73 | 68 | 63 |
| 60 | 43,500 * | | | | | | 60 | 39,400 * | | | | | |
| 65 | 42,000 * | | | | | | 65 | 38,000 * | | | | | |
| 70 | 40,200 * | | | | | | 70 | 36,300 * | | | | | |
| 75 | 37,400 * | | | | | | 75 | 35,000 * | | | | | |
| 80 | 33,500 * | 37,200 | | | | | 80 | 33,000 * | | | | | |
| 85 | 30,400 * | 34,700 | | | | | 85 | 30,800 * | 34,100 | | | | |
| 90 | 27,500 * | 32,100 | | | | | 90 | 27,900 * | 31,900 | | | | |
| 95 | 24,900 * | 29,900 | | | | | 95 | 25,500 * | 29,700 | | | | |
| 100 | 22,700 * | 27,800 * | 25,400 | | | | 100 | 23,300 * | 27,600 * | | | | |
| 105 | 20,700 * | 25,700 * | 24,400 | | | | 105 | 21,300 * | 25,500 * | 23,400 | | | |
| 110 | 18,900 * | 23,800 * | 22,900 | | | | 110 | 19,600 * | 23,500 * | 22,700 | | | |
| 115 | 17,400 * | 21,800 * | 21,600 | | | | 115 | 18,000 * | 21,800 * | 21,300 | | | |
| 120 | 15,800 * | 20,000 * | 20,300 | 17,800 | | | 120 | 16,500 * | 20,000 * | 20,100 | | | |
| 125 | 14,500 * | 18,200 * | 19,200 | 17,400 | | | 125 | 15,200 * | 18,200 * | 19,000 | 16,500 | | |
| 130 | 13,400 * | 16,900 * | 18,100 | 16,500 | | | 130 | 13,800 * | 16,900 * | 17,900 | 16,200 | | |
| 135 | 12,100 * | 15,600 * | 17,300 | 15,600 | | | 135 | 12,700 * | 15,600 * | 17,000 | 15,400 | | |
| 140 | | 14,300 * | 16,400 | 14,800 | 12,500 | | 140 | 11,600 * | 14,300 * | 16,200 | 14,500 | | |
| 145 | | 13,000 * | 15,600 | 14,100 | 12,500 | | 145 | 10,500 * | 13,200 * | 15,300 | 13,700 | 11,400 | |
| 150 | | 11,900 * | 14,800 | 13,300 | 11,900 | | 150 | | 12,100 * | 14,600 | 13,100 | 11,400 | |
| 155 | | | 14,100 | 12,600 | 11,200 | | 155 | | 11,000 * | 13,800 | 12,400 | 10,900 | |
| 160 | | | 13,000 * | 12,100 | 10,500 | 8,300 | 160 | | 9,900 * | 13,200 | 11,900 | 10,300 | |
| 165 | | | 11,600 * | 11,500 | 10,000 | 8,300 | 165 | | | 12,100 * | 11,300 | 9,800 | 7,400 |
| 170 | | | | 11,000 | 9,500 | 8,000 | 170 | | | 11,000 * | 10,800 | 9,200 | 7,400 |
| 175 | | | | | 9,000 | 7,600 | 175 | | | | 10,200 | 8,700 | 7,300 |
| 180 | | | | | 8,500 | 7,200 | 180 | | | | 9,700 | 8,200 | 6,900 |
| 185 | | | | | | 6,800 | 185 | | | | 9,100 | 7,800 | 6,500 |
| 190 | | | | | | | 190 | | | | | 7,300 | 6,100 |
| 195 | | | | | | | 195 | | | | | | 5,800 |
| 200 | | | | | | | 200 | | | | | | 5,400 |



| CK1600-II Luffing Jib Rated Loads in Pounds | | | | | | | | | | | | | |
|---|------------|----------|----------|--------|--------|-------|-------------------|------------|----------|----------|--------|-------|----|
| 11 Counterweights + 2 Low Weights | | | | | | | | | | | | | |
| 117' Boom | | | | | | | | | | | | | |
| Load Radius (ft.) | 155 ft Jib | | | | | | Load Radius (ft.) | 165 ft Jib | | | | | |
| | Boom Angle | | | | | | | Boom Angle | | | | | |
| | 88 | 83 | 78 | 73 | 68 | 63 | | 88 | 83 | 78 | 73 | 68 | 63 |
| 65 | | | | | | | 65 | | | | | | |
| 70 | 34,000 * | | | | | | 70 | 30,800 * | | | | | |
| 75 | 32,800 * | | | | | | 75 | 29,500 * | | | | | |
| 80 | 31,500 * | | | | | | 80 | 28,300 * | | | | | |
| 85 | 30,400 * | 32,800 | | | | | 85 | 27,500 * | | | | | |
| 90 | 27,700 * | 30,800 | | | | | 90 | 26,300 * | | | | | |
| 95 | 25,300 * | 29,100 | | | | | 95 | 25,100 * | 29,000 | | | | |
| 100 | 23,100 * | 27,200 * | | | | | 100 | 22,900 * | 27,100 | | | | |
| 105 | 21,100 * | 25,100 * | | | | | 105 | 20,900 * | 24,900 * | | | | |
| 110 | 19,400 * | 23,300 * | | | | | 110 | 19,100 * | 23,100 * | | | | |
| 115 | 17,800 * | 21,300 * | 20,600 | | | | 115 | 17,600 * | 21,600 * | 19,900 | | | |
| 120 | 16,300 * | 19,600 * | 19,700 | | | | 120 | 16,300 * | 19,800 * | 19,500 | | | |
| 125 | 14,900 * | 18,000 * | 18,600 | | | | 125 | 14,900 * | 18,000 * | 18,400 | | | |
| 130 | 13,800 * | 16,700 * | 17,600 | | | | 130 | 13,600 * | 16,700 * | 17,400 | | | |
| 135 | 12,700 * | 15,400 * | 16,700 | 14,900 | | | 135 | 12,500 * | 15,400 * | 16,400 | | | |
| 140 | 11,600 * | 14,100 * | 15,800 | 14,200 | | | 140 | 11,600 * | 14,100 * | 15,500 | 13,400 | | |
| 145 | 10,800 * | 13,000 * | 14,900 | 13,400 | | | 145 | 10,800 * | 13,000 * | 14,700 | 13,200 | | |
| 150 | 9,700 * | 12,100 * | 14,300 | 12,700 | 10,200 | | 150 | 8,800 * | 12,100 * | 13,900 | 12,400 | | |
| 155 | 8,500 * | 11,000 * | 13,500 | 12,100 | 10,200 | | 155 | | 11,000 * | 13,300 | 11,700 | | |
| 160 | | 10,100 * | 12,800 | 11,400 | 9,800 | | 160 | | 10,100 * | 12,600 | 11,100 | 8,800 | |
| 165 | | 9,200 * | 12,200 | 10,900 | 9,200 | | 165 | | 9,200 * | 12,100 | 10,500 | 8,700 | |
| 170 | | 8,100 * | 11,200 * | 10,300 | 8,800 | 6,500 | 170 | | 8,500 * | 11,200 * | 10,000 | 8,400 | |
| 175 | | | 10,100 * | 9,800 | 8,200 | 6,500 | 175 | | | 10,300 * | 9,400 | 7,900 | |
| 180 | | | 9,200 * | 9,200 | 7,800 | 6,500 | 180 | | | 9,400 * | 9,000 | 7,400 | |
| 185 | | | | 8,800 | 7,300 | 6,000 | 185 | | | 8,500 * | 8,400 | 7,000 | |
| 190 | | | | | 7,000 | 5,700 | 190 | | | | 8,000 | 6,700 | |
| 195 | | | | | 6,600 | 5,200 | 195 | | | | 7,700 | 6,200 | |
| 200 | | | | | 6,200 | 4,900 | 200 | | | | 7,200 | 5,900 | |
| 205 | | | | | | 4,700 | 205 | | | | | 5,600 | |
| 210 | | | | | | | 210 | | | | | 5,200 | |

| 117' Boom | | | | | | | | | | | | |
|-------------------|------------|----------|----------|--------|-------|----|--|--|--|--|--|--|
| Load Radius (ft.) | 175 ft Jib | | | | | | | | | | | |
| | Boom Angle | | | | | | | | | | | |
| | 88 | 83 | 78 | 73 | 68 | 63 | | | | | | |
| 65 | | | | | | | | | | | | |
| 70 | | | | | | | | | | | | |
| 75 | 27,600 * | | | | | | | | | | | |
| 80 | 26,500 * | | | | | | | | | | | |
| 85 | 25,300 * | | | | | | | | | | | |
| 90 | 24,200 * | | | | | | | | | | | |
| 95 | 23,600 * | 27,300 | | | | | | | | | | |
| 100 | 22,700 * | 26,100 | | | | | | | | | | |
| 105 | 20,700 * | 25,400 | | | | | | | | | | |
| 110 | 18,900 * | 23,900 | | | | | | | | | | |
| 115 | 17,400 * | 22,400 | | | | | | | | | | |
| 120 | 16,000 * | 20,900 * | 18,500 | | | | | | | | | |
| 125 | 14,700 * | 19,100 * | 18,000 | | | | | | | | | |
| 130 | 13,600 * | 17,600 * | 17,000 | | | | | | | | | |
| 135 | 12,500 * | 16,300 * | 16,200 | | | | | | | | | |
| 140 | 11,000 * | 14,900 * | 15,300 | | | | | | | | | |
| 145 | | 13,800 * | 14,500 | | | | | | | | | |
| 150 | | 12,700 * | 13,700 | 12,100 | | | | | | | | |
| 155 | | 11,600 * | 13,100 | 11,400 | | | | | | | | |
| 160 | | 10,800 * | 12,400 | 10,900 | | | | | | | | |
| 165 | | | 11,700 | 10,200 | 7,800 | | | | | | | |
| 170 | | | 11,100 * | 9,700 | 7,800 | | | | | | | |
| 175 | | | 10,100 * | 9,100 | 7,700 | | | | | | | |
| 180 | | | 9,400 * | 8,700 | 7,100 | | | | | | | |
| 185 | | | | 8,200 | 6,800 | | | | | | | |
| 190 | | | | 7,800 | 6,300 | | | | | | | |
| 195 | | | | 7,300 | 6,000 | | | | | | | |
| 200 | | | | 6,900 | 5,600 | | | | | | | |
| 205 | | | | 6,600 | 5,200 | | | | | | | |
| 210 | | | | | 4,900 | | | | | | | |



CK1600-II Luffing Jib Rated Loads in Pounds

11 Counterweights + 2 Low Weights

| 127' Boom | | | | | | | | | | | | | | |
|-------------------|------------|----------|--------|--------|--------|--------|-------------------|------------|----------|--------|--------|--------|--------|--|
| Load Radius (ft.) | 75 ft Jib | | | | | | Load Radius (ft.) | 85 ft Jib | | | | | | |
| | Boom Angle | | | | | | | Boom Angle | | | | | | |
| | 88 | 83 | 78 | 73 | 68 | 63 | | 88 | 83 | 78 | 73 | 68 | 63 | |
| 40 | 78,000 * | | | | | | 40 | | | | | | | |
| 45 | 71,000 * | | | | | | 45 | | | | | | | |
| 50 | 64,000 * | | | | | | 50 | 64,000 * | | | | | | |
| 55 | 59,000 * | | | | | | 55 | 58,000 * | | | | | | |
| 60 | 53,100 * | 56,100 | | | | | 60 | 53,700 * | 55,600 | | | | | |
| 65 | 46,000 * | 50,900 | | | | | 65 | 46,900 * | 50,400 | | | | | |
| 70 | 40,300 * | 46,200 | | | | | 70 | 41,200 * | 45,900 | | | | | |
| 75 | 35,400 * | 42,400 | 38,900 | | | | 75 | 36,500 * | 42,100 | | | | | |
| 80 | | 39,000 | 36,100 | | | | 80 | 32,600 * | 38,600 | 35,300 | | | | |
| 85 | | 36,100 | 33,300 | | | | 85 | 29,100 * | 35,800 | 32,900 | | | | |
| 90 | | 33,600 | 31,000 | 28,100 | | | 90 | | 33,200 | 30,600 | | | | |
| 95 | | 29,100 * | 28,900 | 26,700 | | | 95 | | 31,000 | 28,500 | 25,700 | | | |
| 100 | | | 27,100 | 25,000 | | | 100 | | 27,900 * | 26,700 | 24,500 | | | |
| 105 | | | 25,300 | 23,400 | 20,800 | | 105 | | 24,000 * | 25,100 | 23,100 | | | |
| 110 | | | | 22,000 | 20,000 | | 110 | | | 23,500 | 21,700 | | | |
| 115 | | | | 20,700 | 18,800 | | 115 | | | 22,100 | 20,500 | 17,900 | | |
| 120 | | | | 19,500 | 17,800 | | 120 | | | | 19,200 | 17,400 | | |
| 125 | | | | | 16,800 | 14,500 | 125 | | | | 18,100 | 16,400 | | |
| 130 | | | | | 15,800 | 14,300 | 130 | | | | 17,100 | 15,500 | 13,100 | |
| 135 | | | | | | 13,500 | 135 | | | | | 14,700 | 13,000 | |
| 140 | | | | | | 12,600 | 140 | | | | | 13,900 | 12,300 | |
| 145 | | | | | | | 145 | | | | | | 11,600 | |
| 150 | | | | | | | 150 | | | | | | 10,900 | |
| 155 | | | | | | | 155 | | | | | | | |

| 127' Boom | | | | | | | | | | | | | | |
|-------------------|------------|----------|--------|--------|--------|--------|-------------------|------------|----------|--------|--------|--------|--------|--|
| Load Radius (ft.) | 95 ft Jib | | | | | | Load Radius (ft.) | 105 ft Jib | | | | | | |
| | Boom Angle | | | | | | | Boom Angle | | | | | | |
| | 88 | 83 | 78 | 73 | 68 | 63 | | 88 | 83 | 78 | 73 | 68 | 63 | |
| 40 | | | | | | | 40 | | | | | | | |
| 45 | | | | | | | 45 | | | | | | | |
| 50 | 61,600 * | | | | | | 50 | | | | | | | |
| 55 | 58,000 * | | | | | | 55 | 55,200 * | | | | | | |
| 60 | 54,000 * | | | | | | 60 | 52,000 * | | | | | | |
| 65 | 47,100 * | 49,800 | | | | | 65 | 47,300 * | | | | | | |
| 70 | 41,600 * | 45,500 | | | | | 70 | 41,800 * | | | | | | |
| 75 | 37,000 * | 41,600 | | | | | 75 | 37,200 * | 41,400 | | | | | |
| 80 | 33,000 * | 38,300 | | | | | 80 | 33,500 * | 38,100 | | | | | |
| 85 | 29,700 * | 35,400 | 32,200 | | | | 85 | 29,900 * | 35,200 | | | | | |
| 90 | 26,600 * | 32,900 | 30,200 | | | | 90 | 27,100 * | 32,700 | | | | | |
| 95 | 24,000 * | 30,700 | 28,200 | | | | 95 | 24,600 * | 30,500 | 28,200 | | | | |
| 100 | | 28,700 | 26,300 | | | | 100 | 22,200 * | 28,500 | 26,300 | | | | |
| 105 | | 25,900 * | 24,600 | | | | 105 | 20,200 * | 26,500 * | 24,800 | 21,800 | | | |
| 110 | | 23,300 * | 23,200 | 21,200 | | | 110 | | 24,000 * | 23,200 | 21,000 | | | |
| 115 | | 20,000 * | 21,900 | 20,000 | | | 115 | | 21,800 * | 21,900 | 19,800 | | | |
| 120 | | | 20,600 | 18,900 | 16,500 | | 120 | | 19,600 * | 20,700 | 18,700 | | | |
| 125 | | | 19,500 | 17,800 | 16,000 | | 125 | | | 19,600 | 17,600 | 15,200 | | |
| 130 | | | | 16,900 | 15,200 | | 130 | | | 18,500 | 16,700 | 14,900 | | |
| 135 | | | | 16,000 | 14,400 | | 135 | | | 17,500 | 15,800 | 14,100 | | |
| 140 | | | | | 13,600 | 11,500 | 140 | | | | 14,900 | 13,400 | | |
| 145 | | | | | 12,800 | 11,100 | 145 | | | | 14,200 | 12,600 | | |
| 150 | | | | | 12,200 | 10,500 | 150 | | | | | 12,000 | 10,200 | |
| 155 | | | | | | 9,900 | 155 | | | | | 11,300 | 9,700 | |
| 160 | | | | | | | 160 | | | | | 10,600 | 9,100 | |
| 165 | | | | | | | 165 | | | | | | 8,500 | |
| 170 | | | | | | | 170 | | | | | | | |
| 175 | | | | | | | 175 | | | | | | | |



| CK1600-II Luffing Jib Rated Loads in Pounds | | | | | | | | | | | | | |
|--|------------|----------|--------|--------|--------|-------|-------------------|------------|----------|----------|--------|--------|-------|
| 11 Counterweights + 2 Low Weights | | | | | | | | | | | | | |
| 127' Boom | | | | | | | | | | | | | |
| Load Radius (ft.) | 115 ft Jib | | | | | | Load Radius (ft.) | 125 ft Jib | | | | | |
| | Boom Angle | | | | | | | Boom Angle | | | | | |
| | 88 | 83 | 78 | 73 | 68 | 63 | | 88 | 83 | 78 | 73 | 68 | 63 |
| 55 | 50,000 * | | | | | | 55 | 46,000 * | | | | | |
| 60 | 48,000 * | | | | | | 60 | 44,000 * | | | | | |
| 65 | 46,700 * | | | | | | 65 | 42,000 * | | | | | |
| 70 | 42,100 * | | | | | | 70 | 40,500 * | | | | | |
| 75 | 37,400 * | 40,700 | | | | | 75 | 37,900 * | | | | | |
| 80 | 33,500 * | 37,800 | | | | | 80 | 33,900 * | 37,400 | | | | |
| 85 | 30,200 * | 34,900 | | | | | 85 | 30,600 * | 34,600 | | | | |
| 90 | 27,300 * | 32,500 | | | | | 90 | 27,500 * | 32,000 | | | | |
| 95 | 24,900 * | 30,300 | 27,300 | | | | 95 | 25,100 * | 29,800 | | | | |
| 100 | 22,700 * | 28,300 | 26,100 | | | | 100 | 22,900 * | 27,900 | 25,300 | | | |
| 105 | 20,700 * | 26,500 | 24,400 | | | | 105 | 20,900 * | 26,100 * | 24,100 | | | |
| 110 | 18,700 * | 24,300 * | 23,000 | | | | 110 | 18,900 * | 24,300 * | 22,700 | | | |
| 115 | 17,100 * | 22,200 * | 21,700 | 19,500 | | | 115 | 17,400 * | 22,200 * | 21,300 | | | |
| 120 | | 20,200 * | 20,500 | 18,400 | | | 120 | 15,800 * | 20,200 * | 20,100 | 17,400 | | |
| 125 | | 18,500 * | 19,400 | 17,400 | | | 125 | 14,300 * | 18,700 * | 19,000 | 17,000 | | |
| 130 | | 16,700 * | 18,400 | 16,500 | | | 130 | | 17,100 * | 17,900 | 16,000 | | |
| 135 | | | 17,400 | 15,600 | 13,800 | | 135 | | 15,600 * | 17,000 | 15,200 | | |
| 140 | | | 16,500 | 14,800 | 13,100 | | 140 | | 14,300 * | 16,200 | 14,400 | 12,200 | |
| 145 | | | | 14,100 | 12,400 | | 145 | | | 15,400 | 13,700 | 11,900 | |
| 150 | | | | 13,300 | 11,700 | | 150 | | | 14,600 | 13,000 | 11,200 | |
| 155 | | | | 12,600 | 11,100 | 9,200 | 155 | | | 13,800 * | 12,400 | 10,600 | |
| 160 | | | | | 10,500 | 8,800 | 160 | | | | 11,700 | 10,000 | 8,100 |
| 165 | | | | | | 8,300 | 165 | | | | | 9,500 | 7,900 |
| 170 | | | | | | 7,900 | 170 | | | | | 9,000 | 7,400 |
| 175 | | | | | | 7,400 | 175 | | | | | 8,400 | 7,000 |
| 180 | | | | | | | 180 | | | | | | 6,600 |
| 185 | | | | | | | 185 | | | | | | |

| 127' Boom | | | | | | | | | | | | | |
|-------------------|------------|----------|----------|--------|--------|-------|-------------------|------------|----------|----------|--------|-------|-------|
| Load Radius (ft.) | 135 ft Jib | | | | | | Load Radius (ft.) | 145 ft Jib | | | | | |
| | Boom Angle | | | | | | | Boom Angle | | | | | |
| | 88 | 83 | 78 | 73 | 68 | 63 | | 88 | 83 | 78 | 73 | 68 | 63 |
| 60 | 41,000 * | | | | | | 60 | 37,500 * | | | | | |
| 65 | 39,500 * | | | | | | 65 | 36,000 * | | | | | |
| 70 | 38,000 * | | | | | | 70 | 34,700 * | | | | | |
| 75 | 36,700 * | | | | | | 75 | 33,000 * | | | | | |
| 80 | 35,000 * | 36,800 | | | | | 80 | 32,000 * | | | | | |
| 85 | 31,300 * | 34,200 | | | | | 85 | 30,700 * | 33,500 | | | | |
| 90 | 28,200 * | 31,800 | | | | | 90 | 28,200 * | 31,500 | | | | |
| 95 | 25,700 * | 29,600 | | | | | 95 | 25,500 * | 29,400 | | | | |
| 100 | 23,300 * | 27,600 | | | | | 100 | 23,300 * | 27,400 | | | | |
| 105 | 21,300 * | 25,900 | | | | | 105 | 21,300 * | 25,600 | 22,800 | | | |
| 110 | 19,600 * | 24,100 * | 22,300 | | | | 110 | 19,600 * | 23,900 * | 22,100 | | | |
| 115 | 18,000 * | 22,200 * | 21,000 | | | | 115 | 18,000 * | 22,100 * | 20,800 | | | |
| 120 | 16,500 * | 20,500 * | 19,800 | | | | 120 | 16,500 * | 20,200 * | 19,600 | | | |
| 125 | 15,200 * | 18,700 * | 18,700 | 16,000 | | | 125 | 15,200 * | 18,700 * | 18,500 | | | |
| 130 | 13,800 * | 17,100 * | 17,700 | 15,800 | | | 130 | 14,100 * | 17,100 * | 17,500 | | | |
| 135 | 12,500 * | 15,800 * | 16,800 | 14,900 | | | 135 | 12,700 * | 15,800 * | 16,600 | 14,600 | | |
| 140 | | 14,500 * | 15,900 | 14,200 | | | 140 | 11,600 * | 14,500 * | 15,700 | 13,800 | | |
| 145 | | 13,200 * | 15,200 | 13,400 | 10,800 | | 145 | 10,800 * | 13,400 * | 14,900 | 13,200 | | |
| 150 | | | 14,400 | 12,700 | 10,800 | | 150 | | 12,300 * | 14,200 | 12,500 | 9,800 | |
| 155 | | | 13,700 | 12,100 | 10,300 | | 155 | | 11,200 * | 13,500 | 11,900 | 9,800 | |
| 160 | | | 13,100 | 11,500 | 9,800 | | 160 | | 10,300 * | 12,800 | 11,200 | 9,400 | |
| 165 | | | 12,200 * | 10,900 | 9,200 | 7,000 | 165 | | | 12,200 | 10,600 | 8,900 | |
| 170 | | | | 10,300 | 8,700 | 6,800 | 170 | | | 11,500 * | 10,100 | 8,400 | |
| 175 | | | | 9,800 | 8,200 | 6,700 | 175 | | | 10,300 * | 9,500 | 7,900 | 6,000 |
| 180 | | | | | 7,800 | 6,200 | 180 | | | | 9,100 | 7,400 | 5,900 |
| 185 | | | | | 7,300 | 5,900 | 185 | | | | | 7,100 | 5,600 |
| 190 | | | | | | 5,600 | 190 | | | | | 6,700 | 5,200 |
| 195 | | | | | | 5,100 | 195 | | | | | 6,200 | 4,900 |
| 200 | | | | | | | 200 | | | | | | 4,600 |



| CK1600-II Luffing Jib Rated Loads in Pounds | | | | | | | | | | | | | |
|---|------------|----------|----------|--------|-------|----|-------------------|------------|----------|---------|--------|-------|--|
| 11 Counterweights + 2 Low Weights | | | | | | | | | | | | | |
| 127' Boom | | | | | | | 155 ft Jib | | | | | | |
| Load Radius (ft.) | Boom Angle | | | | | | Load Radius (ft.) | 165 ft Jib | | | | | |
| | 88 | 83 | 78 | 73 | 68 | 63 | | Boom Angle | | | | | |
| | 88 | 83 | 78 | 73 | 68 | 63 | 88 | 83 | 78 | 73 | 68 | 63 | |
| 65 | | | | | | | 65 | | | | | | |
| 70 | 32,500 * | | | | | | 70 | 29,700 * | | | | | |
| 75 | 31,000 * | | | | | | 75 | 28,500 * | | | | | |
| 80 | 30,000 * | | | | | | 80 | 27,200 * | | | | | |
| 85 | 28,800 * | | | | | | 85 | 26,200 * | | | | | |
| 90 | 27,200 * | 30,800 | | | | | 90 | 25,200 * | | | | | |
| 95 | 25,300 * | 28,900 | | | | | 95 | 24,300 * | 28,600 | | | | |
| 100 | 23,100 * | 27,000 | | | | | 100 | 22,900 * | 26,700 | | | | |
| 105 | 21,100 * | 25,200 * | | | | | 105 | 20,900 * | 25,000 | | | | |
| 110 | 19,400 * | 23,300 * | | | | | 110 | 19,100 * | 23,200 * | | | | |
| 115 | 17,800 * | 21,800 * | 20,100 | | | | 115 | 17,600 * | 21,600 * | | | | |
| 120 | 16,300 * | 20,000 * | 19,100 | | | | 120 | 16,300 * | 20,000 * | 18,500 | | | |
| 125 | 14,900 * | 18,500 * | 18,100 | | | | 125 | 14,900 * | 18,500 * | 17,800 | | | |
| 130 | 13,800 * | 16,900 * | 17,100 | | | | 130 | 13,800 * | 16,900 * | 16,800 | | | |
| 135 | 12,700 * | 15,600 * | 16,200 | 13,500 | | | 135 | 12,700 * | 15,600 * | 15,900 | | | |
| 140 | 11,600 * | 14,500 * | 15,400 | 13,500 | | | 140 | 11,600 * | 14,500 * | 15,100 | 12,300 | | |
| 145 | 10,800 * | 13,200 * | 14,500 | 12,700 | | | 145 | 10,800 * | 13,200 * | 14,300 | 12,300 | | |
| 150 | 9,900 * | 12,300 * | 13,800 | 12,100 | | | 150 | 8,500 * | 12,300 * | 13,600 | 11,700 | | |
| 155 | 8,800 * | 11,200 * | 13,200 | 11,400 | | | 155 | | 11,200 * | 12,800 | 11,100 | | |
| 160 | | 10,300 * | 12,500 | 10,800 | 8,400 | | 160 | | 10,300 * | 12,300 | 10,400 | | |
| 165 | | 9,400 * | 11,900 | 10,200 | 8,300 | | 165 | | | 11,600 | 9,900 | | |
| 170 | | | 11,300 | 9,700 | 7,900 | | 170 | | | 11,100 | 9,300 | | |
| 175 | | | 10,600 * | 9,100 | 7,400 | | 175 | | | 10,500 | 8,900 | 7,100 | |
| 180 | | | 9,700 * | 8,700 | 7,000 | | 180 | | | 9,700 * | 8,300 | 6,700 | |
| 185 | | | | 8,200 | 6,700 | | 185 | | | 9,000 * | 7,900 | 6,300 | |
| 190 | | | | 7,800 | 6,200 | | 190 | | | | 7,400 | 5,900 | |
| 195 | | | | 7,300 | 5,900 | | 195 | | | | 7,000 | 5,600 | |
| 200 | | | | | 5,500 | | 200 | | | | 6,700 | 5,200 | |
| 205 | | | | | | | 205 | | | | | 4,900 | |
| 210 | | | | | | | 210 | | | | | | |

| 127' Boom | | | | | | | 175 ft Jib | | | | | | |
|-------------------|------------|----------|---------|--------|----|----|-------------------|------------|----|----|----|----|--|
| Load Radius (ft.) | Boom Angle | | | | | | Load Radius (ft.) | 195 ft Jib | | | | | |
| | 88 | 83 | 78 | 73 | 68 | 63 | | Boom Angle | | | | | |
| | 88 | 83 | 78 | 73 | 68 | 63 | 88 | 83 | 78 | 73 | 68 | 63 | |
| 65 | | | | | | | | | | | | | |
| 70 | | | | | | | | | | | | | |
| 75 | 26,500 * | | | | | | | | | | | | |
| 80 | 25,300 * | | | | | | | | | | | | |
| 85 | 24,500 * | | | | | | | | | | | | |
| 90 | 23,500 * | | | | | | | | | | | | |
| 95 | 22,500 * | | | | | | | | | | | | |
| 100 | 21,800 * | 26,000 | | | | | | | | | | | |
| 105 | 20,700 * | 24,800 | | | | | | | | | | | |
| 110 | 18,900 * | 23,500 | | | | | | | | | | | |
| 115 | 17,400 * | 22,100 | | | | | | | | | | | |
| 120 | 16,000 * | 20,900 | 17,800 | | | | | | | | | | |
| 125 | 14,700 * | 19,500 * | 17,600 | | | | | | | | | | |
| 130 | 13,600 * | 17,800 * | 16,600 | | | | | | | | | | |
| 135 | 12,500 * | 16,500 * | 15,600 | | | | | | | | | | |
| 140 | 10,800 * | 15,200 * | 14,800 | | | | | | | | | | |
| 145 | | 14,100 * | 14,100 | 11,200 | | | | | | | | | |
| 150 | | 13,000 * | 13,300 | 11,200 | | | | | | | | | |
| 155 | | 11,900 * | 12,600 | 10,800 | | | | | | | | | |
| 160 | | 11,000 * | 12,000 | 10,100 | | | | | | | | | |
| 165 | | | 11,400 | 9,500 | | | | | | | | | |
| 170 | | | 10,900 | 9,000 | | | | | | | | | |
| 175 | | | 10,300 | 8,500 | | | | | | | | | |
| 180 | | | 9,800 | 8,000 | | | | | | | | | |
| 185 | | | 9,000 * | 7,600 | | | | | | | | | |
| 190 | | | | 7,200 | | | | | | | | | |
| 195 | | | | 6,800 | | | | | | | | | |
| 200 | | | | 6,300 | | | | | | | | | |
| 205 | | | | 6,000 | | | | | | | | | |
| 210 | | | | | | | | | | | | | |



CK1600-II Luffing Jib Rated Loads in Pounds

11 Counterweights + 2 Low Weights

| 137' Boom | | | | | | | | | | | | | | |
|-------------------|------------|--------|--------|--------|--------|--------|-------------------|------------|----------|--------|--------|--------|--------|--|
| Load Radius (ft.) | 75 ft Jib | | | | | | Load Radius (ft.) | 85 ft Jib | | | | | | |
| | Boom Angle | | | | | | | Boom Angle | | | | | | |
| | 88 | 83 | 78 | 73 | 68 | 63 | | 88 | 83 | 78 | 73 | 68 | 63 | |
| 40 | 72,000 * | | | | | | 40 | | | | | | | |
| 45 | 69,100 * | | | | | | 45 | | | | | | | |
| 50 | 63,600 * | | | | | | 50 | 62,000 * | | | | | | |
| 55 | 58,000 * | | | | | | 55 | 58,200 * | | | | | | |
| 60 | 53,000 * | 55,500 | | | | | 60 | 53,000 * | | | | | | |
| 65 | 46,500 * | 50,400 | | | | | 65 | 47,300 * | | | | | | |
| 70 | 40,700 * | 45,800 | | | | | 70 | 41,600 * | 45,500 | | | | | |
| 75 | 35,700 * | 41,900 | | | | | 75 | 36,800 * | 41,600 | | | | | |
| 80 | 31,500 * | 38,600 | 35,300 | | | | 80 | 32,600 * | 38,300 | 34,700 | | | | |
| 85 | | 35,800 | 32,800 | | | | 85 | 29,100 * | 35,400 | 32,400 | | | | |
| 90 | | 33,200 | 30,400 | | | | 90 | | 32,900 | 30,000 | | | | |
| 95 | | 30,600 | 28,400 | 25,400 | | | 95 | | 30,700 | 27,900 | | | | |
| 100 | | | 26,500 | 24,200 | | | 100 | | 28,700 | 26,200 | 23,200 | | | |
| 105 | | | 24,900 | 22,800 | | | 105 | | 25,500 * | 24,500 | 22,300 | | | |
| 110 | | | 23,300 | 21,300 | | | 110 | | | 23,100 | 21,000 | | | |
| 115 | | | | 20,100 | 18,000 | | 115 | | | 21,700 | 19,800 | | | |
| 120 | | | | 18,900 | 17,000 | | 120 | | | | 18,700 | 16,600 | | |
| 125 | | | | | 16,000 | 13,500 | 125 | | | | 17,600 | 15,700 | | |
| 130 | | | | | 15,200 | 13,300 | 130 | | | | 16,600 | 14,800 | | |
| 135 | | | | | | 12,500 | 135 | | | | | 14,100 | 11,400 | |
| 140 | | | | | | 11,700 | 140 | | | | | 13,300 | 11,300 | |
| 145 | | | | | | 11,100 | 145 | | | | | | 10,600 | |
| 150 | | | | | | | 150 | | | | | | 10,100 | |
| 155 | | | | | | | 155 | | | | | | | |

| 137' Boom | | | | | | | | | | | | | | |
|-------------------|------------|----------|--------|--------|--------|--------|-------------------|------------|----------|--------|--------|--------|-------|--|
| Load Radius (ft.) | 95 ft Jib | | | | | | Load Radius (ft.) | 105 ft Jib | | | | | | |
| | Boom Angle | | | | | | | Boom Angle | | | | | | |
| | 88 | 83 | 78 | 73 | 68 | 63 | | 88 | 83 | 78 | 73 | 68 | 63 | |
| 40 | | | | | | | 40 | | | | | | | |
| 45 | | | | | | | 45 | | | | | | | |
| 50 | 56,800 * | | | | | | 50 | | | | | | | |
| 55 | 54,400 * | | | | | | 55 | 51,000 * | | | | | | |
| 60 | 52,500 * | | | | | | 60 | 49,000 * | | | | | | |
| 65 | 47,600 * | | | | | | 65 | 47,200 * | | | | | | |
| 70 | 41,800 * | 45,000 | | | | | 70 | 42,100 * | | | | | | |
| 75 | 37,200 * | 41,200 | | | | | 75 | 37,400 * | 41,000 | | | | | |
| 80 | 33,200 * | 38,000 | | | | | 80 | 33,500 * | 37,600 | | | | | |
| 85 | 29,700 * | 35,100 | 31,600 | | | | 85 | 30,200 * | 34,800 | | | | | |
| 90 | 26,800 * | 32,600 | 29,600 | | | | 90 | 27,300 * | 32,400 | | | | | |
| 95 | 24,000 * | 30,400 | 27,600 | | | | 95 | 24,600 * | 30,200 | 27,200 | | | | |
| 100 | | 28,400 | 25,700 | | | | 100 | 22,400 * | 28,200 | 25,900 | | | | |
| 105 | | 26,500 | 24,200 | 21,300 | | | 105 | 20,200 * | 26,400 | 24,200 | | | | |
| 110 | | 23,800 * | 22,700 | 20,600 | | | 110 | | 24,400 * | 22,800 | | | | |
| 115 | | 21,300 * | 21,300 | 19,400 | | | 115 | | 22,200 * | 21,400 | 19,100 | | | |
| 120 | | | 20,100 | 18,200 | | | 120 | | 20,200 * | 20,200 | 18,000 | | | |
| 125 | | | 19,000 | 17,300 | 14,600 | | 125 | | | 19,100 | 17,000 | | | |
| 130 | | | 17,900 | 16,400 | 14,400 | | 130 | | | 18,100 | 16,200 | | | |
| 135 | | | | 15,500 | 13,600 | | 135 | | | 17,100 | 15,300 | 13,000 | | |
| 140 | | | | | 12,800 | 10,200 | 140 | | | | 14,500 | 12,500 | | |
| 145 | | | | | 12,200 | 10,200 | 145 | | | | 13,700 | 11,900 | 9,200 | |
| 150 | | | | | 11,400 | 9,700 | 150 | | | | 13,000 | 11,200 | 9,200 | |
| 155 | | | | | | 9,100 | 155 | | | | | 10,600 | 8,800 | |
| 160 | | | | | | 8,500 | 160 | | | | | | 8,200 | |
| 165 | | | | | | | 165 | | | | | | 7,800 | |
| 170 | | | | | | | 170 | | | | | | | |
| 175 | | | | | | | 175 | | | | | | | |



CK1600-II Luffing Jib Rated Loads in Pounds

11 Counterweights + 2 Low Weights

| 137' Boom | | | | | | | 125 ft Jib | | | | | | |
|-------------------|------------|----------|--------|--------|--------|-------|-------------------|------------|----------|--------|--------|--------|-------|
| Load Radius (ft.) | 115 ft Jib | | | | | | Load Radius (ft.) | 125 ft Jib | | | | | |
| | Boom Angle | | | | | | | Boom Angle | | | | | |
| | 88 | 83 | 78 | 73 | 68 | 63 | 88 | 83 | 78 | 73 | 68 | 63 | |
| 55 | 47,000 * | | | | | | 55 | | | | | | |
| 60 | 45,000 * | | | | | | 60 | 42,000 * | | | | | |
| 65 | 43,200 * | | | | | | 65 | 40,500 * | | | | | |
| 70 | 41,000 * | | | | | | 70 | 39,000 * | | | | | |
| 75 | 37,600 * | 40,300 | | | | | 75 | 37,200 * | | | | | |
| 80 | 33,700 * | 37,400 | | | | | 80 | 34,100 * | 36,700 | | | | |
| 85 | 30,400 * | 34,600 | | | | | 85 | 30,600 * | 34,200 | | | | |
| 90 | 27,500 * | 32,100 | | | | | 90 | 27,700 * | 31,700 | | | | |
| 95 | 24,900 * | 29,900 | | | | | 95 | 25,100 * | 29,500 | | | | |
| 100 | 22,700 * | 27,900 | 25,000 | | | | 100 | 22,900 * | 27,600 | 24,400 | | | |
| 105 | 20,700 * | 26,200 | 24,000 | | | | 105 | 20,900 * | 25,900 | 23,500 | | | |
| 110 | 18,900 * | 24,600 | 22,500 | | | | 110 | 19,100 * | 24,300 | 22,100 | | | |
| 115 | 17,100 * | 22,700 * | 21,200 | | | | 115 | 17,400 * | 22,700 | 20,800 | | | |
| 120 | | 20,700 * | 20,000 | 17,200 | | | 120 | 15,800 * | 20,700 * | 19,700 | 16,700 | | |
| 125 | | 18,900 * | 18,900 | 16,800 | | | 125 | | 18,900 * | 18,600 | 16,400 | | |
| 130 | | 17,100 * | 17,900 | 15,800 | | | 130 | | 17,400 * | 17,600 | 15,500 | | |
| 135 | | 15,400 * | 16,900 | 15,100 | | | 135 | | 15,800 * | 16,600 | 14,600 | | |
| 140 | | | 16,200 | 14,300 | 12,000 | | 140 | | 14,500 * | 15,800 | 13,800 | | |
| 145 | | | 15,300 | 13,500 | 11,500 | | 145 | | | 14,900 | 13,200 | | |
| 150 | | | | 12,800 | 11,000 | | 150 | | | 14,300 | 12,500 | 10,400 | |
| 155 | | | | 12,200 | 10,300 | 7,800 | 155 | | | 13,500 | 11,900 | 9,900 | |
| 160 | | | | | 9,800 | 7,800 | 160 | | | | 11,200 | 9,300 | 6,700 |
| 165 | | | | | 9,200 | 7,400 | 165 | | | | 10,600 | 8,800 | 6,700 |
| 170 | | | | | 8,800 | 7,000 | 170 | | | | 10,100 | 8,300 | 6,600 |
| 175 | | | | | | 6,700 | 175 | | | | | 7,900 | 6,100 |
| 180 | | | | | | 6,200 | 180 | | | | | | 5,800 |
| 185 | | | | | | | 185 | | | | | | 5,500 |

| 137' Boom | | | | | | | 145 ft Jib | | | | | | |
|-------------------|------------|----------|--------|--------|-------|-------|-------------------|------------|----------|----------|--------|-------|-------|
| Load Radius (ft.) | 135 ft Jib | | | | | | Load Radius (ft.) | 145 ft Jib | | | | | |
| | Boom Angle | | | | | | | Boom Angle | | | | | |
| | 88 | 83 | 78 | 73 | 68 | 63 | 88 | 83 | 78 | 73 | 68 | 63 | |
| 60 | 38,800 * | | | | | | 60 | 35,500 * | | | | | |
| 65 | 37,000 * | | | | | | 65 | 34,000 * | | | | | |
| 70 | 35,800 * | | | | | | 70 | 32,600 * | | | | | |
| 75 | 34,300 * | | | | | | 75 | 31,500 * | | | | | |
| 80 | 33,000 * | | | | | | 80 | 30,000 * | | | | | |
| 85 | 31,300 * | | | | | | 85 | 29,000 * | 33,200 | | | | |
| 90 | 28,400 * | 31,500 | | | | | 90 | 27,800 * | 31,100 | | | | |
| 95 | 25,700 * | 29,300 | | | | | 95 | 25,700 * | 28,900 | | | | |
| 100 | 23,500 * | 27,300 | | | | | 100 | 23,500 * | 27,100 | | | | |
| 105 | 21,600 * | 25,600 | 22,500 | | | | 105 | 21,600 * | 25,300 | | | | |
| 110 | 19,800 * | 24,000 | 21,800 | | | | 110 | 19,600 * | 23,800 | | | | |
| 115 | 18,000 * | 22,400 * | 20,600 | | | | 115 | 18,000 * | 22,100 * | 20,000 | | | |
| 120 | 16,500 * | 20,800 * | 19,400 | | | | 120 | 16,500 * | 20,700 * | 19,100 | | | |
| 125 | 15,200 * | 19,100 * | 18,200 | 15,400 | | | 125 | 15,200 * | 18,900 * | 18,000 | | | |
| 130 | 13,800 * | 17,600 * | 17,300 | 15,200 | | | 130 | 14,100 * | 17,600 * | 17,000 | | | |
| 135 | 12,700 * | 16,000 * | 16,400 | 14,400 | | | 135 | 13,000 * | 16,000 * | 16,200 | 13,700 | | |
| 140 | | 14,700 * | 15,500 | 13,600 | | | 140 | 11,900 * | 14,700 * | 15,300 | 13,300 | | |
| 145 | | 13,600 * | 14,700 | 12,800 | 9,900 | | 145 | 10,800 * | 13,600 * | 14,500 | 12,600 | | |
| 150 | | 12,300 * | 14,100 | 12,200 | 9,900 | | 150 | | 12,500 * | 13,800 | 11,900 | | |
| 155 | | 11,000 * | 13,400 | 11,500 | 9,500 | | 155 | | 11,400 * | 13,200 | 11,200 | 8,300 | |
| 160 | | | 12,700 | 11,000 | 9,000 | | 160 | | 10,500 * | 12,500 | 10,600 | 8,300 | |
| 165 | | | | 10,300 | 8,400 | | 165 | | | 11,900 | 10,100 | 8,100 | |
| 170 | | | | | 9,900 | 8,000 | 170 | | | 11,300 | 9,500 | 7,700 | |
| 175 | | | | | | 9,300 | 175 | | | 10,600 * | 9,000 | 7,200 | |
| 180 | | | | | | 7,100 | 180 | | | | | 8,500 | 6,800 |
| 185 | | | | | | 6,700 | 185 | | | | | 8,100 | 6,500 |
| 190 | | | | | | 6,300 | 190 | | | | | 7,700 | 6,000 |
| 195 | | | | | | | 195 | | | | | | 5,700 |
| 200 | | | | | | | 200 | | | | | | |



| CK1600-II Luffing Jib Rated Loads in Pounds | | | | | | | | | | | | | |
|---|------------|----------|--------|--------|----|----|-------------------|------------|----------|---------|--------|----|----|
| 11 Counterweights + 2 Low Weights | | | | | | | | | | | | | |
| 137' Boom | | | | | | | | | | | | | |
| Load Radius (ft.) | 155 ft Jib | | | | | | Load Radius (ft.) | 165 ft Jib | | | | | |
| | Boom Angle | | | | | | | Boom Angle | | | | | |
| | 88 | 83 | 78 | 73 | 68 | 63 | | 88 | 83 | 78 | 73 | 68 | 63 |
| 65 | | | | | | | 65 | | | | | | |
| 70 | 30,600 * | | | | | | 70 | 28,000 * | | | | | |
| 75 | 29,200 * | | | | | | 75 | 27,000 * | | | | | |
| 80 | 28,000 * | | | | | | 80 | 26,000 * | | | | | |
| 85 | 27,200 * | | | | | | 85 | 25,000 * | | | | | |
| 90 | 26,200 * | | | | | | 90 | 24,000 * | | | | | |
| 95 | 25,000 * | 28,600 | | | | | 95 | 23,000 * | 27,200 | | | | |
| 100 | 23,300 * | 26,700 | | | | | 100 | 22,000 * | 26,000 | | | | |
| 105 | 21,300 * | 25,000 | | | | | 105 | 21,100 * | 24,600 | | | | |
| 110 | 19,400 * | 23,400 | | | | | 110 | 19,400 * | 23,100 | | | | |
| 115 | 17,800 * | 21,800 * | 19,100 | | | | 115 | 17,800 * | 21,600 * | | | | |
| 120 | 16,500 * | 20,200 * | 18,700 | | | | 120 | 16,300 * | 20,000 * | 18,000 | | | |
| 125 | 15,200 * | 18,900 * | 17,700 | | | | 125 | 14,900 * | 18,700 * | 17,400 | | | |
| 130 | 13,800 * | 17,400 * | 16,700 | | | | 130 | 13,800 * | 17,400 * | 16,400 | | | |
| 135 | 12,700 * | 16,000 * | 15,800 | | | | 135 | 12,700 * | 15,800 * | 15,500 | | | |
| 140 | 11,600 * | 14,700 * | 14,900 | 12,700 | | | 140 | 11,600 * | 14,700 * | 14,700 | | | |
| 145 | 10,800 * | 13,600 * | 14,200 | 12,100 | | | 145 | 10,800 * | 13,400 * | 13,900 | | | |
| 150 | 9,900 * | 12,500 * | 13,400 | 11,400 | | | 150 | 8,300 * | 12,500 * | 13,200 | 11,100 | | |
| 155 | 9,000 * | 11,400 * | 12,700 | 10,800 | | | 155 | | 11,400 * | 12,500 | 10,400 | | |
| 160 | | 10,500 * | 12,200 | 10,200 | | | 160 | | 10,500 * | 11,900 | 9,900 | | |
| 165 | | 9,700 * | 11,500 | 9,700 | | | 165 | | 9,700 * | 11,300 | 9,300 | | |
| 170 | | 8,800 * | 11,000 | 9,100 | | | 170 | | 8,800 * | 10,800 | 8,800 | | |
| 175 | | 7,400 * | 10,400 | 8,500 | | | 175 | | | 10,200 | 8,300 | | |
| 180 | | | 10,000 | 8,100 | | | 180 | | | 9,700 | 7,800 | | |
| 185 | | | | 7,700 | | | 185 | | | 9,200 | 7,300 | | |
| 190 | | | | 7,200 | | | 190 | | | 8,400 * | 7,000 | | |
| 195 | | | | 6,900 | | | 195 | | | | 6,600 | | |
| 200 | | | | | | | 200 | | | | 6,200 | | |
| 205 | | | | | | | 205 | | | | 5,800 | | |
| 210 | | | | | | | 210 | | | | | | |

| 137' Boom | | | | | | | | | | | | | |
|-------------------|------------|----------|--------|-------|----|----|-------------------|--|--|--|--|--|--|
| Load Radius (ft.) | 175 ft Jib | | | | | | Load Radius (ft.) | | | | | | |
| | Boom Angle | | | | | | | | | | | | |
| | 88 | 83 | 78 | 73 | 68 | 63 | | | | | | | |
| 65 | | | | | | | | | | | | | |
| 70 | | | | | | | | | | | | | |
| 75 | 25,400 * | | | | | | | | | | | | |
| 80 | 24,500 * | | | | | | | | | | | | |
| 85 | 23,500 * | | | | | | | | | | | | |
| 90 | 22,600 * | | | | | | | | | | | | |
| 95 | 21,800 * | | | | | | | | | | | | |
| 100 | 21,000 * | 25,500 | | | | | | | | | | | |
| 105 | 20,000 * | 23,800 | | | | | | | | | | | |
| 110 | 18,900 * | 22,800 | | | | | | | | | | | |
| 115 | 17,600 * | 21,900 | | | | | | | | | | | |
| 120 | 16,000 * | 20,600 | | | | | | | | | | | |
| 125 | 14,700 * | 19,500 | | | | | | | | | | | |
| 130 | 13,600 * | 18,100 * | 16,000 | | | | | | | | | | |
| 135 | 12,700 * | 16,700 * | 15,300 | | | | | | | | | | |
| 140 | 10,800 * | 15,400 * | 14,400 | | | | | | | | | | |
| 145 | | 14,300 * | 13,600 | | | | | | | | | | |
| 150 | | 13,200 * | 13,000 | | | | | | | | | | |
| 155 | | 12,100 * | 12,300 | 9,700 | | | | | | | | | |
| 160 | | 11,200 * | 11,600 | 9,500 | | | | | | | | | |
| 165 | | | 11,100 | 9,000 | | | | | | | | | |
| 170 | | | 10,400 | 8,400 | | | | | | | | | |
| 175 | | | 9,900 | 8,000 | | | | | | | | | |
| 180 | | | 9,400 | 7,600 | | | | | | | | | |
| 185 | | | 8,900 | 7,100 | | | | | | | | | |
| 190 | | | | 6,700 | | | | | | | | | |
| 195 | | | | 6,200 | | | | | | | | | |
| 200 | | | | 5,900 | | | | | | | | | |
| 205 | | | | 5,600 | | | | | | | | | |
| 210 | | | | 5,200 | | | | | | | | | |



CK1600-II Luffing Jib Rated Loads in Pounds

11 Counterweights + 2 Low Weights

| 147' Boom | | | | | | | | | | | | | | |
|-------------------|------------|--------|--------|--------|--------|--------|-------------------|------------|--------|--------|--------|--------|-------|-------|
| Load Radius (ft.) | 75 ft Jib | | | | | | Load Radius (ft.) | 85 ft Jib | | | | | | |
| | Boom Angle | | | | | | | Boom Angle | | | | | | |
| | 88 | 83 | 78 | 73 | 68 | 63 | | 88 | 83 | 78 | 73 | 68 | 63 | |
| 40 | 66,200 * | | | | | | 40 | | | | | | | |
| 45 | 63,800 * | | | | | | 45 | | | | | | | |
| 50 | 60,800 * | | | | | | 50 | 57,000 * | | | | | | |
| 55 | 58,600 * | | | | | | 55 | 55,000 * | | | | | | |
| 60 | 54,000 * | 55,000 | | | | | 60 | 52,500 * | | | | | | |
| 65 | 46,900 * | 49,900 | | | | | 65 | 47,600 * | | | | | | |
| 70 | 41,000 * | 45,400 | | | | | 70 | 41,800 * | 45,000 | | | | | |
| 75 | 36,100 * | 41,600 | | | | | 75 | 37,000 * | 41,200 | | | | | |
| 80 | | 38,300 | 34,300 | | | | 80 | 32,800 * | 37,900 | | | | | |
| 85 | | 35,400 | 32,100 | | | | 85 | 29,300 * | 35,100 | | | | | |
| 90 | | 32,900 | 29,800 | | | | 90 | | 32,600 | 29,400 | | | | |
| 95 | | 30,600 | 27,800 | | | | 95 | | 30,400 | 27,400 | | | | |
| 100 | | | 26,000 | 23,200 | | | 100 | | 28,400 | 25,600 | | | | |
| 105 | | | 24,300 | 22,000 | | | 105 | | | 24,000 | | | | |
| 110 | | | 22,900 | 20,700 | | | 110 | | | 22,500 | 20,300 | | | |
| 115 | | | | 19,500 | | | 115 | | | 21,200 | 19,100 | | | |
| 120 | | | | 18,400 | 16,000 | | 120 | | | | 18,000 | 15,200 | | |
| 125 | | | | 17,300 | 15,300 | | 125 | | | | 17,000 | 14,800 | | |
| 130 | | | | | 14,500 | 11,500 | 130 | | | | 16,000 | 14,100 | | |
| 135 | | | | | 13,600 | 11,500 | 135 | | | | | 13,200 | | |
| 140 | | | | | | 10,900 | 140 | | | | | 12,500 | 9,700 | |
| 145 | | | | | | | 145 | | | | | 11,700 | 9,700 | |
| 150 | | | | | | | 150 | | | | | | 9,100 | |
| 155 | | | | | | | 155 | | | | | | | 8,500 |

| 147' Boom | | | | | | | | | | | | | | |
|-------------------|------------|----------|--------|--------|--------|-------|-------------------|------------|----------|--------|--------|--------|-------|-------|
| Load Radius (ft.) | 95 ft Jib | | | | | | Load Radius (ft.) | 105 ft Jib | | | | | | |
| | Boom Angle | | | | | | | Boom Angle | | | | | | |
| | 88 | 83 | 78 | 73 | 68 | 63 | | 88 | 83 | 78 | 73 | 68 | 63 | |
| 40 | | | | | | | 40 | | | | | | | |
| 45 | | | | | | | 45 | | | | | | | |
| 50 | 52,400 * | | | | | | 50 | | | | | | | |
| 55 | 50,500 * | | | | | | 55 | 47,700 * | | | | | | |
| 60 | 48,500 * | | | | | | 60 | 45,800 * | | | | | | |
| 65 | 47,000 * | | | | | | 65 | 44,000 * | | | | | | |
| 70 | 42,300 * | 44,600 | | | | | 70 | 41,500 * | | | | | | |
| 75 | 37,400 * | 40,700 | | | | | 75 | 37,600 * | 40,500 | | | | | |
| 80 | 33,500 * | 37,500 | | | | | 80 | 33,700 * | 37,300 | | | | | |
| 85 | 29,900 * | 34,700 | | | | | 85 | 30,400 * | 34,500 | | | | | |
| 90 | 26,800 * | 32,200 | 28,600 | | | | 90 | 27,300 * | 32,000 | | | | | |
| 95 | 24,200 * | 30,000 | 27,300 | | | | 95 | 24,900 * | 29,800 | 26,700 | | | | |
| 100 | | 28,100 | 25,500 | | | | 100 | 22,400 * | 27,800 | 25,200 | | | | |
| 105 | | 26,300 | 24,000 | | | | 105 | | 26,100 | 23,600 | | | | |
| 110 | | 24,400 * | 22,400 | 19,900 | | | 110 | | 24,500 | 22,200 | | | | |
| 115 | | 21,800 * | 21,200 | 18,700 | | | 115 | | 22,700 * | 21,000 | 17,800 | | | |
| 120 | | | 20,000 | 17,700 | | | 120 | | 20,700 * | 19,800 | 17,400 | | | |
| 125 | | | 18,900 | 16,700 | 13,600 | | 125 | | | 18,700 | 16,400 | | | |
| 130 | | | 17,800 | 15,700 | 13,500 | | 130 | | | 17,700 | 15,500 | | | |
| 135 | | | | 14,900 | 12,700 | | 135 | | | 16,700 | 14,700 | 12,000 | | |
| 140 | | | | 14,200 | 12,000 | | 140 | | | | 13,900 | 11,700 | | |
| 145 | | | | 13,400 | 11,300 | 8,500 | 145 | | | | 13,200 | 11,100 | | |
| 150 | | | | | 10,800 | 8,500 | 150 | | | | 12,500 | 10,400 | | |
| 155 | | | | | 10,100 | 8,100 | 155 | | | | | 9,900 | 7,600 | |
| 160 | | | | | | 7,700 | 160 | | | | | | | 7,300 |
| 165 | | | | | | | 165 | | | | | | | 6,900 |
| 170 | | | | | | | 170 | | | | | | | 6,500 |
| 175 | | | | | | | 175 | | | | | | | 6,100 |



| CK1600-II Luffing Jib Rated Loads in Pounds | | | | | | | | | | | | | |
|--|------------|----------|--------|--------|--------|-------|-------------------|------------|----------|--------|--------|-------|----|
| 11 Counterweights + 2 Low Weights | | | | | | | | | | | | | |
| 147' Boom | | | | | | | | | | | | | |
| Load Radius (ft.) | 115 ft Jib | | | | | | Load Radius (ft.) | 125 ft Jib | | | | | |
| | Boom Angle | | | | | | | Boom Angle | | | | | |
| | 88 | 83 | 78 | 73 | 68 | 63 | | 88 | 83 | 78 | 73 | 68 | 63 |
| 55 | 44,000 * | | | | | | 55 | | | | | | |
| 60 | 42,100 * | | | | | | 60 | 39,300 * | | | | | |
| 65 | 40,500 * | | | | | | 65 | 38,000 * | | | | | |
| 70 | 39,000 * | | | | | | 70 | 36,500 * | | | | | |
| 75 | 37,000 * | | | | | | 75 | 35,000 * | | | | | |
| 80 | 34,000 * | 37,000 | | | | | 80 | 33,500 * | 36,200 | | | | |
| 85 | 31,000 * | 34,200 | | | | | 85 | 31,700 * | 33,800 | | | | |
| 90 | 27,500 * | 31,700 | | | | | 90 | 28,600 * | 31,400 | | | | |
| 95 | 25,200 * | 29,600 | | | | | 95 | 26,000 * | 29,200 | | | | |
| 100 | 23,000 * | 27,600 | 24,500 | | | | 100 | 23,500 * | 27,300 | | | | |
| 105 | 21,100 * | 25,900 | 23,400 | | | | 105 | 21,600 * | 25,500 | | | | |
| 110 | 19,100 * | 24,300 | 22,000 | | | | 110 | 19,800 * | 24,000 | 21,600 | | | |
| 115 | 17,300 * | 22,900 | 20,700 | | | | 115 | 18,000 * | 22,500 | 20,300 | | | |
| 120 | | 21,100 * | 19,600 | 16,500 | | | 120 | 16,500 * | 21,200 * | 19,100 | | | |
| 125 | | 19,100 * | 18,500 | 16,200 | | | 125 | 14,900 * | 19,400 * | 18,100 | | | |
| 130 | | 17,600 * | 17,500 | 15,300 | | | 130 | | 17,800 * | 17,100 | 14,600 | | |
| 135 | | 15,800 * | 16,600 | 14,500 | | | 135 | | 16,300 * | 16,300 | 14,100 | | |
| 140 | | | 15,700 | 13,700 | 10,600 | | 140 | | 14,700 * | 15,400 | 13,300 | | |
| 145 | | | 14,900 | 13,000 | 10,600 | | 145 | | | 14,600 | 12,500 | 9,400 | |
| 150 | | | 14,200 | 12,300 | 10,100 | | 150 | | | 13,800 | 11,900 | 9,400 | |
| 155 | | | | 11,600 | 9,500 | | 155 | | | 13,200 | 11,200 | 9,100 | |
| 160 | | | | 11,100 | 9,000 | 6,300 | 160 | | | | 10,600 | 8,500 | |
| 165 | | | | | 8,500 | 6,300 | 165 | | | | 10,100 | 8,000 | |
| 170 | | | | | 8,000 | 6,200 | 170 | | | | 9,500 | 7,600 | |
| 175 | | | | | 7,600 | 5,800 | 175 | | | | | 7,100 | |
| 180 | | | | | | 5,500 | 180 | | | | | 6,800 | |
| 185 | | | | | | | 185 | | | | | 6,300 | |
| 147' Boom | | | | | | | | | | | | | |
| Load Radius (ft.) | 135 ft Jib | | | | | | Load Radius (ft.) | 145 ft Jib | | | | | |
| | Boom Angle | | | | | | | Boom Angle | | | | | |
| | 88 | 83 | 78 | 73 | 68 | 63 | | 88 | 83 | 78 | 73 | 68 | 63 |
| 60 | 36,200 * | | | | | | 60 | 33,600 * | | | | | |
| 65 | 34,800 * | | | | | | 65 | 32,000 * | | | | | |
| 70 | 33,500 * | | | | | | 70 | 31,000 * | | | | | |
| 75 | 32,200 * | | | | | | 75 | 29,800 * | | | | | |
| 80 | 31,000 * | | | | | | 80 | 28,500 * | | | | | |
| 85 | 30,000 * | | | | | | 85 | 27,500 * | | | | | |
| 90 | 28,000 * | 31,000 | | | | | 90 | 26,300 * | 30,800 | | | | |
| 95 | 26,000 * | 28,900 | | | | | 95 | 25,400 * | 28,600 | | | | |
| 100 | 23,500 * | 27,000 | | | | | 100 | 23,500 * | 26,700 | | | | |
| 105 | 21,600 * | 25,300 | 22,000 | | | | 105 | 21,600 * | 25,000 | | | | |
| 110 | 19,800 * | 23,800 | 21,300 | | | | 110 | 19,800 * | 23,400 | | | | |
| 115 | 18,000 * | 22,300 | 20,000 | | | | 115 | 18,000 * | 21,900 * | 19,500 | | | |
| 120 | 16,700 * | 20,800 * | 18,900 | | | | 120 | 16,700 * | 20,500 * | 18,600 | | | |
| 125 | 15,200 * | 19,400 * | 17,800 | | | | 125 | 15,400 * | 19,400 * | 17,600 | | | |
| 130 | 13,800 * | 17,800 * | 16,800 | | | | 130 | 14,100 * | 17,800 * | 16,600 | | | |
| 135 | 12,700 * | 16,300 * | 15,900 | 13,300 | | | 135 | 13,000 * | 16,500 * | 15,700 | | | |
| 140 | | 14,900 * | 15,200 | 13,000 | | | 140 | 11,900 * | 15,200 * | 14,900 | 12,000 | | |
| 145 | | 13,800 * | 14,400 | 12,200 | | | 145 | | 13,800 * | 14,200 | 11,900 | | |
| 150 | | 12,500 * | 13,600 | 11,500 | 8,400 | | 150 | | 12,700 * | 13,400 | 11,200 | | |
| 155 | | 11,400 * | 13,000 | 11,000 | 8,400 | | 155 | | 11,600 * | 12,700 | 10,600 | | |
| 160 | | | 12,400 | 10,300 | 8,200 | | 160 | | 10,800 * | 12,200 | 10,000 | 7,300 | |
| 165 | | | 11,700 | 9,800 | 7,800 | | 165 | | | 11,500 | 9,400 | 7,300 | |
| 170 | | | 11,200 | 9,200 | 7,200 | | 170 | | | 11,000 | 9,000 | 6,900 | |
| 175 | | | | 8,800 | 6,900 | | 175 | | | 10,400 | 8,400 | 6,600 | |
| 180 | | | | 8,300 | 6,500 | | 180 | | | | 8,000 | 6,100 | |
| 185 | | | | | 6,000 | | 185 | | | | 7,600 | 5,800 | |
| 190 | | | | | 5,700 | | 190 | | | | | 5,400 | |
| 195 | | | | | | | 195 | | | | | 5,000 | |
| 200 | | | | | | | 200 | | | | | 4,700 | |



| CK1600-II Luffing Jib Rated Loads in Pounds | | | | | | | | | | | | | |
|---|------------|----------|--------|--------|----|----|-------------------|------------|----------|---------|--------|----|----|
| 11 Counterweights + 2 Low Weights | | | | | | | | | | | | | |
| 147' Boom | | | | | | | | | | | | | |
| Load Radius (ft.) | 155 ft Jib | | | | | | Load Radius (ft.) | 165 ft Jib | | | | | |
| | Boom Angle | | | | | | | Boom Angle | | | | | |
| | 88 | 83 | 78 | 73 | 68 | 63 | | 88 | 83 | 78 | 73 | 68 | 63 |
| 65 | | | | | | | 65 | | | | | | |
| 70 | 29,200 * | | | | | | 70 | 26,800 * | | | | | |
| 75 | 28,000 * | | | | | | 75 | 25,600 * | | | | | |
| 80 | 26,800 * | | | | | | 80 | 24,700 * | | | | | |
| 85 | 25,800 * | | | | | | 85 | 23,800 * | | | | | |
| 90 | 24,800 * | | | | | | 90 | 23,000 * | | | | | |
| 95 | 24,000 * | 28,200 | | | | | 95 | 22,000 * | 26,000 | | | | |
| 100 | 23,000 * | 26,400 | | | | | 100 | 21,000 * | 24,800 | | | | |
| 105 | 21,300 * | 24,600 | | | | | 105 | 20,400 * | 24,000 | | | | |
| 110 | 19,600 * | 23,100 | | | | | 110 | 19,400 * | 23,000 | | | | |
| 115 | 18,000 * | 21,700 | | | | | 115 | 17,800 * | 21,900 | | | | |
| 120 | 16,500 * | 20,200 * | 17,700 | | | | 120 | 16,300 * | 20,600 | 17,000 | | | |
| 125 | 15,200 * | 18,900 * | 17,100 | | | | 125 | 14,900 * | 19,400 | 16,800 | | | |
| 130 | 13,800 * | 17,600 * | 16,300 | | | | 130 | 13,800 * | 18,400 | 15,800 | | | |
| 135 | 12,900 * | 16,300 * | 15,400 | | | | 135 | 12,700 * | 17,300 * | 15,100 | | | |
| 140 | 11,900 * | 14,900 * | 14,500 | 11,200 | | | 140 | 11,600 * | 15,900 * | 14,100 | | | |
| 145 | 10,800 * | 13,800 * | 13,700 | 11,200 | | | 145 | 10,800 * | 14,700 * | 13,400 | 10,100 | | |
| 150 | 9,900 * | 12,700 * | 13,100 | 10,800 | | | 150 | 8,100 * | 13,600 * | 12,700 | 10,100 | | |
| 155 | 9,000 * | 11,600 * | 12,400 | 10,100 | | | 155 | | 12,500 * | 12,100 | 9,800 | | |
| 160 | | 10,800 * | 11,700 | 9,500 | | | 160 | | 11,400 * | 11,400 | 9,200 | | |
| 165 | | 9,900 * | 11,200 | 9,000 | | | 165 | | 10,500 * | 10,800 | 8,700 | | |
| 170 | | 9,000 * | 10,600 | 8,500 | | | 170 | | 9,700 * | 10,100 | 8,200 | | |
| 175 | | | 10,000 | 8,000 | | | 175 | | | 9,500 * | 7,700 | | |
| 180 | | | 9,400 | 7,600 | | | 180 | | | 9,000 * | 7,200 | | |
| 185 | | | 8,800 | 7,100 | | | 185 | | | 8,500 * | 6,900 | | |
| 190 | | | | 6,800 | | | 190 | | | 8,100 * | 6,500 | | |
| 195 | | | | 6,300 | | | 195 | | | 6,500 * | 6,100 | | |
| 200 | | | | 6,000 | | | 200 | | | | 5,700 | | |
| 205 | | | | | | | 205 | | | | 5,400 | | |
| 210 | | | | | | | 210 | | | | | | |

| 147' Boom | | | | | | | | | | | | | |
|-------------------|------------|----------|----------|-------|----|----|-------------------|--|--|--|--|--|--|
| Load Radius (ft.) | 175 ft Jib | | | | | | Load Radius (ft.) | | | | | | |
| | Boom Angle | | | | | | | | | | | | |
| | 88 | 83 | 78 | 73 | 68 | 63 | | | | | | | |
| 65 | | | | | | | | | | | | | |
| 70 | | | | | | | | | | | | | |
| 75 | 24,000 * | | | | | | | | | | | | |
| 80 | 23,000 * | | | | | | | | | | | | |
| 85 | 22,200 * | | | | | | | | | | | | |
| 90 | 21,500 * | | | | | | | | | | | | |
| 95 | 20,500 * | | | | | | | | | | | | |
| 100 | 19,800 * | 23,500 | | | | | | | | | | | |
| 105 | 19,000 * | 22,500 | | | | | | | | | | | |
| 110 | 18,200 * | 21,800 | | | | | | | | | | | |
| 115 | 17,600 * | 21,000 | | | | | | | | | | | |
| 120 | 16,300 * | 20,000 | | | | | | | | | | | |
| 125 | 14,900 * | 19,100 | | | | | | | | | | | |
| 130 | 13,600 * | 18,100 | 15,000 | | | | | | | | | | |
| 135 | 12,600 * | 16,900 * | 14,500 | | | | | | | | | | |
| 140 | | 15,800 * | 13,600 | | | | | | | | | | |
| 145 | | 14,500 * | 13,000 * | | | | | | | | | | |
| 150 | | 13,400 * | 12,100 * | | | | | | | | | | |
| 155 | | 12,300 * | 11,400 * | 9,100 | | | | | | | | | |
| 160 | | 11,400 * | 11,000 * | 8,900 | | | | | | | | | |
| 165 | | 10,500 * | 10,300 * | 8,300 | | | | | | | | | |
| 170 | | | 9,700 * | 7,900 | | | | | | | | | |
| 175 | | | 9,200 * | 7,400 | | | | | | | | | |
| 180 | | | 8,800 * | 7,000 | | | | | | | | | |
| 185 | | | 8,300 * | 6,600 | | | | | | | | | |
| 190 | | | 7,700 * | 6,100 | | | | | | | | | |
| 195 | | | | 5,800 | | | | | | | | | |
| 200 | | | | 5,500 | | | | | | | | | |
| 205 | | | | 5,000 | | | | | | | | | |
| 210 | | | | | | | | | | | | | |



CK1600-II Luffing Jib Rated Loads in Pounds

11 Counterweights + 2 Low Weights

| 157' Boom | | | | | | | 85 ft Jib | | | | | | |
|-------------------|------------|--------|--------|--------|--------|-------|-------------------|------------|--------|--------|--------|--------|--|
| Load Radius (ft.) | 75 ft Jib | | | | | | Load Radius (ft.) | 85 ft Jib | | | | | |
| | Boom Angle | | | | | | | Boom Angle | | | | | |
| | 88 | 83 | 78 | 73 | 68 | 63 | 88 | 83 | 78 | 73 | 68 | 63 | |
| 40 | 60,700 * | | | | | | 40 | | | | | | |
| 45 | 59,000 * | | | | | | 45 | | | | | | |
| 50 | 56,300 * | | | | | | 50 | 52,500 * | | | | | |
| 55 | 54,200 * | | | | | | 55 | 50,700 * | | | | | |
| 60 | 52,000 * | 54,300 | | | | | 60 | 48,500 * | | | | | |
| 65 | 47,300 * | 49,300 | | | | | 65 | 46,700 * | | | | | |
| 70 | 41,400 * | 44,800 | | | | | 70 | 42,100 * | 44,500 | | | | |
| 75 | 36,300 * | 41,100 | | | | | 75 | 37,200 * | 40,700 | | | | |
| 80 | | 37,900 | 33,500 | | | | 80 | 33,000 * | 37,400 | | | | |
| 85 | | 35,000 | 31,300 | | | | 85 | | 34,700 | | | | |
| 90 | | 32,500 | 29,100 | | | | 90 | | 32,100 | 28,600 | | | |
| 95 | | 30,300 | 27,100 | | | | 95 | | 30,000 | 26,600 | | | |
| 100 | | | 25,300 | 21,900 | | | 100 | | 28,100 | 25,000 | | | |
| 105 | | | 23,800 | 21,100 | | | 105 | | 26,300 | 23,300 | 20,000 | | |
| 110 | | | 22,200 | 19,900 | | | 110 | | 22,900 | 22,000 | 19,500 | | |
| 115 | | | | 18,700 | | | 115 | | | 20,700 | 18,200 | | |
| 120 | | | | 17,600 | 14,400 | | 120 | | | 19,500 | 17,300 | | |
| 125 | | | | 16,600 | 14,200 | | 125 | | | 18,400 | 16,300 | 13,000 | |
| 130 | | | | | 13,400 | | 130 | | | | 15,400 | 12,800 | |
| 135 | | | | | 12,600 | | 135 | | | | 14,500 | 12,200 | |
| 140 | | | | | | 9,200 | 140 | | | | | 11,400 | |
| 145 | | | | | | 9,000 | 145 | | | | | 10,800 | |
| 150 | | | | | | 8,400 | 150 | | | | | 10,100 | |
| 155 | | | | | | | 155 | | | | | 8,000 | |
| 160 | | | | | | | 160 | | | | | 7,400 | |
| | | | | | | | | | | | | 7,000 | |

| 157' Boom | | | | | | | 105 ft Jib | | | | | | |
|-------------------|------------|----------|--------|--------|--------|-------|-------------------|------------|----------|--------|--------|--------|--|
| Load Radius (ft.) | 95 ft Jib | | | | | | Load Radius (ft.) | 105 ft Jib | | | | | |
| | Boom Angle | | | | | | | Boom Angle | | | | | |
| | 88 | 83 | 78 | 73 | 68 | 63 | 88 | 83 | 78 | 73 | 68 | 63 | |
| 50 | 48,500 * | | | | | | 50 | | | | | | |
| 55 | 46,600 * | | | | | | 55 | 44,000 * | | | | | |
| 60 | 44,800 * | | | | | | 60 | 42,000 * | | | | | |
| 65 | 43,000 * | | | | | | 65 | 40,700 * | | | | | |
| 70 | 41,000 * | | | | | | 70 | 39,000 * | | | | | |
| 75 | 37,600 * | 40,300 | | | | | 75 | 37,000 * | 40,000 | | | | |
| 80 | 33,700 * | 37,100 | | | | | 80 | 33,900 * | 36,800 | | | | |
| 85 | 30,200 * | 34,200 | | | | | 85 | 30,600 * | 34,000 | | | | |
| 90 | 27,100 * | 31,800 | | | | | 90 | 27,500 * | 31,600 | | | | |
| 95 | 24,400 * | 29,600 | 26,000 | | | | 95 | 24,900 * | 29,400 | | | | |
| 100 | | 27,700 | 24,900 | | | | 100 | 22,400 * | 27,500 | 24,000 | | | |
| 105 | | 26,000 | 23,300 | | | | 105 | 20,500 * | 25,700 | 23,000 | | | |
| 110 | | 24,400 | 21,900 | | | | 110 | | 24,200 | 21,700 | | | |
| 115 | | 22,400 * | 20,600 | 17,600 | | | 115 | | 22,800 | 20,300 | | | |
| 120 | | | 19,500 | 16,800 | | | 120 | | 21,100 * | 19,200 | 16,100 | | |
| 125 | | | 18,400 | 15,900 | | | 125 | | 18,900 * | 18,100 | 15,600 | | |
| 130 | | | 17,200 | 15,100 | | | 130 | | 16,300 * | 17,100 | 14,800 | | |
| 135 | | | | 14,200 | 11,300 | | 135 | | | 16,300 | 13,900 | | |
| 140 | | | | 13,500 | 11,000 | | 140 | | | 15,400 | 13,200 | 10,100 | |
| 145 | | | | 12,700 | 10,300 | | 145 | | | | 12,500 | 10,000 | |
| 150 | | | | | 9,800 | | 150 | | | | 11,900 | 9,400 | |
| 155 | | | | | 9,200 | 6,600 | 155 | | | | 11,200 | 8,900 | |
| 160 | | | | | | 6,600 | 160 | | | | | 8,300 | |
| 165 | | | | | | 6,100 | 165 | | | | | 7,900 | |
| 170 | | | | | | | 170 | | | | | 5,500 | |
| 175 | | | | | | | 175 | | | | | 5,000 | |
| 180 | | | | | | | 180 | | | | | | |
| 185 | | | | | | | 185 | | | | | | |



| CK1600-II Luffing Jib Rated Loads in Pounds | | | | | | | | | | | | | |
|--|------------|----------|--------|--------|-------|----|-------------------|------------|----------|----------|--------|-------|----|
| 11 Counterweights + 2 Low Weights | | | | | | | | | | | | | |
| 157' Boom | | | | | | | | | | | | | |
| Load Radius (ft.) | 115 ft Jib | | | | | | Load Radius (ft.) | 125 ft Jib | | | | | |
| | Boom Angle | | | | | | | Boom Angle | | | | | |
| | 88 | 83 | 78 | 73 | 68 | 63 | | 88 | 83 | 78 | 73 | 68 | 63 |
| 55 | 40,500 * | | | | | | 55 | | | | | | |
| 60 | 39,000 * | | | | | | 60 | 36,800 * | | | | | |
| 65 | 37,500 * | | | | | | 65 | 35,300 * | | | | | |
| 70 | 36,000 * | | | | | | 70 | 34,000 * | | | | | |
| 75 | 34,500 * | | | | | | 75 | 32,700 * | | | | | |
| 80 | 33,000 * | 36,000 | | | | | 80 | 31,500 * | 35,700 | | | | |
| 85 | 31,900 * | 33,700 | | | | | 85 | 30,200 * | 33,300 | | | | |
| 90 | 28,800 * | 31,300 | | | | | 90 | 28,500 * | 30,900 | | | | |
| 95 | 26,200 * | 29,200 | | | | | 95 | 26,200 * | 28,700 | | | | |
| 100 | 23,800 * | 27,300 | 23,500 | | | | 100 | 23,800 * | 26,800 | | | | |
| 105 | 21,600 * | 25,500 | 22,800 | | | | 105 | 21,600 * | 25,200 | 21,600 | | | |
| 110 | 19,600 * | 24,000 | 21,300 | | | | 110 | 19,800 * | 23,600 | 21,000 | | | |
| 115 | 17,800 * | 22,500 | 20,100 | | | | 115 | 18,000 * | 22,200 | 19,700 | | | |
| 120 | | 21,300 | 19,000 | | | | 120 | 16,500 * | 20,800 * | 18,600 | | | |
| 125 | | 19,700 * | 17,900 | | | | 125 | | 19,600 * | 17,600 | | | |
| 130 | | 17,800 * | 16,900 | 14,400 | | | 130 | | 18,000 * | 16,600 | 13,900 | | |
| 135 | | 16,300 * | 16,000 | 13,700 | | | 135 | | 16,500 * | 15,700 | 13,200 | | |
| 140 | | | 15,300 | 13,000 | | | 140 | | 15,200 * | 14,900 | 12,400 | | |
| 145 | | | 14,500 | 12,200 | | | 145 | | | 14,200 | 11,700 | | |
| 150 | | | 13,700 | 11,500 | 9,100 | | 150 | | | 13,400 | 11,100 | | |
| 155 | | | | 11,000 | 8,500 | | 155 | | | 12,700 | 10,500 | 7,800 | |
| 160 | | | | 10,300 | 8,100 | | 160 | | | 12,000 * | 9,900 | 7,600 | |
| 165 | | | | | 7,600 | | 165 | | | | 9,300 | 7,100 | |
| 170 | | | | | 7,100 | | 170 | | | | 8,900 | 6,700 | |
| 175 | | | | | 6,800 | | 175 | | | | 8,300 | 6,300 | |
| 180 | | | | | | | 180 | | | | | 5,900 | |
| 185 | | | | | | | 185 | | | | | 5,600 | |

| 157' Boom | | | | | | | | | | | | | |
|-------------------|------------|----------|----------|--------|-------|----|-------------------|------------|----------|----------|--------|----|----|
| Load Radius (ft.) | 135 ft Jib | | | | | | Load Radius (ft.) | 145 ft Jib | | | | | |
| | Boom Angle | | | | | | | Boom Angle | | | | | |
| | 88 | 83 | 78 | 73 | 68 | 63 | | 88 | 83 | 78 | 73 | 68 | 63 |
| 60 | 34,000 * | | | | | | 60 | | | | | | |
| 65 | 32,700 * | | | | | | 65 | | | | | | |
| 70 | 31,300 * | | | | | | 70 | 29,800 * | | | | | |
| 75 | 30,000 * | | | | | | 75 | 28,800 * | | | | | |
| 80 | 29,000 * | | | | | | 80 | 27,500 * | | | | | |
| 85 | 28,000 * | | | | | | 85 | 26,500 * | | | | | |
| 90 | 27,000 * | 30,600 | | | | | 90 | 25,500 * | 29,500 | | | | |
| 95 | 25,600 * | 28,500 | | | | | 95 | 24,500 * | 28,000 | | | | |
| 100 | 23,800 * | 26,600 | | | | | 100 | 23,500 * | 26,300 | | | | |
| 105 | 21,800 * | 24,900 | | | | | 105 | 21,600 * | 24,600 | | | | |
| 110 | 19,800 * | 23,300 | | | | | 110 | 19,800 * | 23,100 | | | | |
| 115 | 18,200 * | 22,000 | 19,100 | | | | 115 | 18,200 * | 21,700 | 18,400 | | | |
| 120 | 16,700 * | 20,600 * | 18,200 | | | | 120 | 16,700 * | 20,300 * | 18,000 | | | |
| 125 | 15,400 * | 19,400 * | 17,300 | | | | 125 | 15,400 * | 18,900 * | 17,000 | | | |
| 130 | 14,100 * | 18,200 * | 16,400 | | | | 130 | 14,100 * | 17,800 * | 16,000 | | | |
| 135 | 12,700 * | 16,700 * | 15,500 | 12,400 | | | 135 | 13,000 * | 16,700 * | 15,200 | | | |
| 140 | | 15,400 * | 14,600 | 12,100 | | | 140 | 11,900 * | 15,400 * | 14,400 | 11,000 | | |
| 145 | | 14,100 * | 13,900 | 11,400 | | | 145 | | 14,100 * | 13,600 | 11,000 | | |
| 150 | | 12,700 * | 13,200 | 10,800 | | | 150 | | 13,000 * | 13,000 | 10,400 | | |
| 155 | | 11,600 * | 12,500 | 10,200 | | | 155 | | 11,900 * | 12,300 | 9,900 | | |
| 160 | | | 12,000 | 9,700 | 6,700 | | 160 | | 11,000 * | 11,500 * | 9,300 | | |
| 165 | | | 11,200 * | 9,100 | 6,700 | | 165 | | | 11,000 * | 8,800 | | |
| 170 | | | | 8,500 | 6,300 | | 170 | | | 10,300 * | 8,200 | | |
| 175 | | | | 8,100 | 6,000 | | 175 | | | 9,700 * | 7,800 | | |
| 180 | | | | 7,700 | 5,600 | | 180 | | | 9,000 * | 7,300 | | |
| 185 | | | | | 5,200 | | 185 | | | | 6,900 | | |
| 190 | | | | | 4,900 | | 190 | | | | 6,600 | | |
| 195 | | | | | 4,400 | | 195 | | | | 6,100 | | |
| 200 | | | | | | | 200 | | | | | | |

| CK1600-II Luffing Jib Rated Loads in Pounds | | | | | | | | | | | | | |
|---|------------|----------|----------|-------|----|----|-------------------|------------|----------|----------|-------|----|----|
| 11 Counterweights + 2 Low Weights | | | | | | | | | | | | | |
| 157' Boom | | | | | | | | | | | | | |
| Load Radius (ft.) | 155 ft Jib | | | | | | Load Radius (ft.) | 165 ft Jib | | | | | |
| | Boom Angle | | | | | | | Boom Angle | | | | | |
| | 88 | 83 | 78 | 73 | 68 | 63 | | 88 | 83 | 78 | 73 | 68 | 63 |
| 65 | | | | | | | 65 | | | | | | |
| 70 | 27,500 * | | | | | | 70 | 25,300 * | | | | | |
| 75 | 26,500 * | | | | | | 75 | 24,500 * | | | | | |
| 80 | 25,500 * | | | | | | 80 | 23,300 * | | | | | |
| 85 | 24,400 * | | | | | | 85 | 22,500 * | | | | | |
| 90 | 23,400 * | | | | | | 90 | 21,800 * | | | | | |
| 95 | 22,500 * | 26,700 | | | | | 95 | 20,700 * | | | | | |
| 100 | 21,800 * | 25,700 | | | | | 100 | 20,000 * | 24,200 | | | | |
| 105 | 21,000 * | 24,600 | | | | | 105 | 19,300 * | 23,300 | | | | |
| 110 | 19,600 * | 23,100 | | | | | 110 | 18,500 * | 22,500 | | | | |
| 115 | 18,000 * | 21,800 | | | | | 115 | 17,800 * | 21,400 | | | | |
| 120 | 16,500 * | 20,500 | 16,400 | | | | 120 | 16,500 * | 20,200 | | | | |
| 125 | 15,200 * | 19,400 | 16,300 | | | | 125 | 15,200 * | 19,100 | | | | |
| 130 | 14,100 * | 18,200 | 15,400 | | | | 130 | 13,800 * | 18,000 | 14,600 * | | | |
| 135 | 12,700 * | 17,300 * | 14,500 | | | | 135 | 12,700 * | 16,800 * | 14,100 * | | | |
| 140 | 11,900 * | 16,300 * | 13,600 * | | | | 140 | 11,700 * | 15,800 * | 13,200 * | | | |
| 145 | 10,800 * | 14,900 * | 13,000 * | | | | 145 | | 14,900 * | 12,500 * | | | |
| 150 | 9,900 * | 13,800 * | 12,300 * | 9,600 | | | 150 | | 13,800 * | 11,900 * | | | |
| 155 | 9,000 * | 12,700 * | 11,600 * | 9,300 | | | 155 | | 12,700 * | 11,200 * | 8,500 | | |
| 160 | | 11,600 * | 11,000 * | 8,800 | | | 160 | | 11,600 * | 10,500 * | 8,400 | | |
| 165 | | 10,800 * | 10,300 * | 8,300 | | | 165 | | 10,800 * | 9,900 * | 8,000 | | |
| 170 | | 9,700 * | 9,900 * | 7,800 | | | 170 | | | 9,400 * | 7,400 | | |
| 175 | | 8,800 * | 9,200 * | 7,300 | | | 175 | | | 8,800 * | 7,000 | | |
| 180 | | | 8,800 * | 6,900 | | | 180 | | | 8,300 * | 6,600 | | |
| 185 | | | 8,100 * | 6,600 | | | 185 | | | 7,900 * | 6,200 | | |
| 190 | | | | 6,100 | | | 190 | | | 7,400 * | 5,800 | | |
| 195 | | | | 5,800 | | | 195 | | | 6,800 * | 5,500 | | |
| 200 | | | | 5,400 | | | 200 | | | | 5,100 | | |
| 205 | | | | | | | 205 | | | | 4,800 | | |
| 210 | | | | | | | 210 | | | | | | |

| 157' Boom | | | | | | | | | | | | | |
|-------------------|------------|----------|----------|-------|----|----|-------------------|--|--|--|--|--|--|
| Load Radius (ft.) | 175 ft Jib | | | | | | Load Radius (ft.) | | | | | | |
| | Boom Angle | | | | | | | | | | | | |
| | 88 | 83 | 78 | 73 | 68 | 63 | | | | | | | |
| 65 | | | | | | | | | | | | | |
| 70 | | | | | | | | | | | | | |
| 75 | 23,000 * | | | | | | | | | | | | |
| 80 | 22,200 * | | | | | | | | | | | | |
| 85 | 21,300 * | | | | | | | | | | | | |
| 90 | 20,500 * | | | | | | | | | | | | |
| 95 | 19,700 * | | | | | | | | | | | | |
| 100 | 19,000 * | 22,500 | | | | | | | | | | | |
| 105 | 18,300 * | 21,500 | | | | | | | | | | | |
| 110 | 17,600 * | 20,800 | | | | | | | | | | | |
| 115 | 17,000 * | 20,000 | | | | | | | | | | | |
| 120 | 16,000 * | 19,200 | | | | | | | | | | | |
| 125 | 14,900 * | 18,500 | 14,100 * | | | | | | | | | | |
| 130 | 13,700 * | 17,800 | 14,100 * | | | | | | | | | | |
| 135 | 12,700 * | 16,600 * | 13,600 * | | | | | | | | | | |
| 140 | | 15,600 * | 12,700 * | | | | | | | | | | |
| 145 | | 14,700 * | 12,000 * | | | | | | | | | | |
| 150 | | 13,600 * | 11,300 * | | | | | | | | | | |
| 155 | | 12,500 * | 10,700 * | 7,700 | | | | | | | | | |
| 160 | | 11,600 * | 10,100 * | 7,700 | | | | | | | | | |
| 165 | | | 9,600 * | 7,600 | | | | | | | | | |
| 170 | | | 9,000 * | 7,000 | | | | | | | | | |
| 175 | | | 8,500 * | 6,700 | | | | | | | | | |
| 180 | | | 8,100 * | 6,200 | | | | | | | | | |
| 185 | | | 7,400 * | 5,900 | | | | | | | | | |
| 190 | | | 7,000 * | 5,500 | | | | | | | | | |
| 195 | | | 6,600 * | 5,100 | | | | | | | | | |
| 200 | | | | 4,800 | | | | | | | | | |
| 205 | | | | | | | | | | | | | |
| 210 | | | | | | | | | | | | | |

CK1600-II Luffing Jib

Bigge Crane and Rigging Co.

10700 Bigge Avenue
San Leandro, CA 94577
Phone: (888) 337-BIGGE or (510) 638-8100
Fax: (510) 639-4053
Email: info@bigge.com
Web site: www.bigge.com

Note: Due to our policy of continual product improvement, all designs and specifications are subject to change without advance notice. Pictures inside this publication may show machines with optional equipment. This manual and the specifications herein were prepared for the market served by Kobelco Cranes North America Inc. including North America and Latin America. Kobelco product specifications in other world markets may differ.

KOBELCO CRANES CO., LTD

Oval Court Ohsaki Mark West Bldg., 17-1, Higashigotanda 2-chome,
Shinagawa-ku, Tokyo, 141-8626 JAPAN
Tel: ++81 (0) 3-5789-2130 Fax: ++81 (0) 3-5789-3372

KOBELCO CRANES NORTH AMERICA INC.

10845 Train Court
Houston Texas 77041 U.S.A
Tel: 713-856-5755 Fax: 713-856-9072
www.kobelcocranesnorthamerica.com

