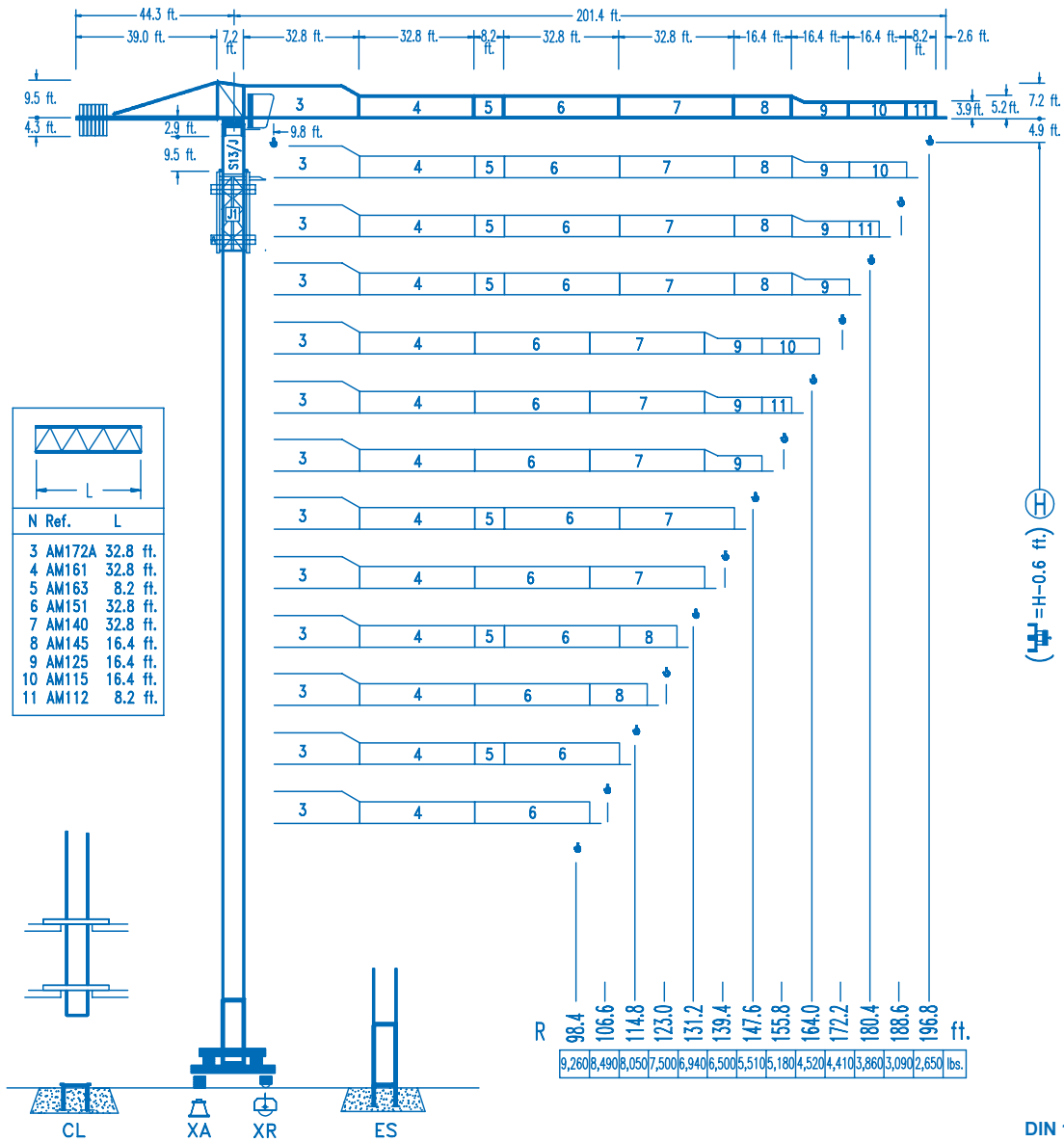


LINDEN COMANSA

LINDEN 1100

11 LC 132

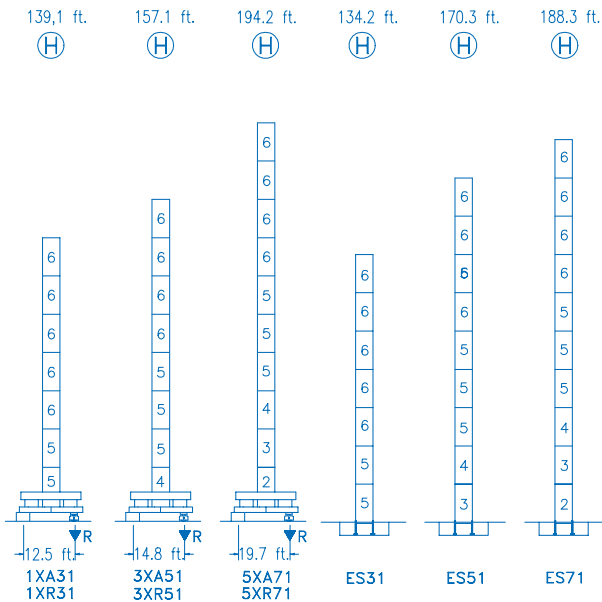
11,020 lbs.



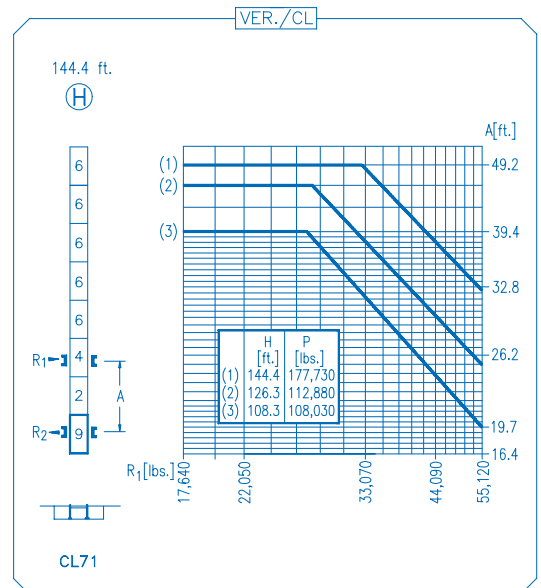
R	R											R																										
196.8	55.8	65.6	72.2	85.3	91.9	96.1	108.9	114.8	123.0	131.2	139.4	147.6	155.8	164.0	172.2	180.4	188.6	196.8	ft.	11,020	9,020	8,000	6,460	5,840	5,510	5,510	5,180	4,760	4,410	4,100	3,810	3,570	3,350	3,150	2,950	2,800	2,650	lbs.
188.6	59.7	65.6	72.2	85.3	91.9	98.4	103.3	117.5	123.0	131.2	139.4	147.6	155.8	164.0	172.2	180.4	188.6	ft.	11,020	9,830	8,750	7,080	6,440	5,890	5,510	5,510	5,200	4,830	4,500	4,190	3,920	3,680	3,460	3,260	3,090	lbs.		
180.4	67.9	72.2	85.3	91.9	98.4	105.0	114.8	117.5	133.9	139.4	147.6	155.8	164.0	172.2	180.4	ft.	11,020	10,230	8,330	7,610	6,970	6,390	5,690	5,510	5,510	5,270	4,920	4,610	4,340	4,080	3,860	lbs.						
172.2	70.2	85.3	91.9	98.4	105.0	114.8	121.4	125.0	142.7	147.6	155.8	164.0	172.2	ft.	11,020	8,990	8,200	7,520	6,920	6,170	5,730	5,510	5,510	5,290	4,960	4,670	4,410	lbs.										
164.0	74.5	85.3	91.9	98.4	105.0	114.8	121.4	128.0	138.8	139.4	147.6	155.8	164.0	ft.	11,020	8,690	7,910	7,250	6,680	5,930	5,510	5,510	5,470	5,110	4,810	4,520	lbs.											
155.8	74.1	85.3	91.9	98.4	105.0	114.8	121.4	128.0	128.9	148.0	155.8	ft.	11,020	9,350	8,530	7,830	7,230	6,440	5,970	5,580	5,510	5,510	5,180	lbs.														
147.6	74.1	85.3	91.9	98.4	105.0	114.8	121.4	128.0	128.9	147.6	ft.	11,020	9,330	8,510	7,800	7,210	6,420	5,970	5,560	5,510	5,510	5,180	lbs.															
139.4	89.2	98.4	105.0	114.8	121.4	128.0	131.2	ft.	11,020	9,920	9,170	8,200	7,650	6,940	6,500	lbs.																						
131.2	88.6	91.9	98.4	105.0	114.8	123.0	ft.	11,020	9,790	9,060	8,110	7,560	6,940	lbs.																								
123.0	88.6	91.9	98.4	105.0	114.8	123.0	ft.	11,020	10,580	9,720	8,990	8,050	7,500	lbs.																								

DS.0840.03 10/08 Reserva de modificaciones.- Subject to modifications.- Modifications réservées.- Konstruktionsänderungen vorbehalten.





N Ref.	h
2	TS15 18.0 ft.
3	S14 18.0 ft.
4	TS14 18.0 ft.
5	S13 18.0 ft.
6	S12 18.0 ft.
9	CLS15 10.2 ft.



R. máx.	En servicio	1XR31 ... 155,860 lbs.
	In operation	
	En service	
	In Betrieb	
	3XR51 ... 149,910 lbs.	
	5XR71 ... 159,170 lbs.	

R. máx.	Fuera de servicio	1XR31 ... 198,850 lbs.
	Out of service	
	Hors service	
	Ausser Betrieb	
	3XR51 ... 215,170 lbs.	
	5XR71 ... 251,100 lbs.	

CS2-1.9

2.5 hp.

55 ft./min
157 ft./min

CFU-2.2

2.9 hp.

0 ⇄ 262 ft./min

GR-5.5

2x40 ft.lbs.

0 ⇄ 0.7 rpm

TS2-5.5 | **TRA-7.5**

2x40 ft.lbs. | 2x55 ft.lbs.

0 ⇄ 65 ft./min

1XR31 | 5XR71
3XR51

TRA-7.5VC

2x55 ft.lbs.

0 ⇄ 65 ft./min

5XR71

1,080 ft.

ES3-18-12

24 hp.

		I	II	III
ft./min	30	126	252	
	lbs.	5,510	5,510	2,865
ft./min	15	63	126	
	lbs.	11,020	11,020	5,730

1,080 ft.

EFU2-18-12

24 hp.

Tensión de alimentación	480 V
Operating voltage	3 ph
Tension de service	60 Hz
Betriebsspannung	

Optional
En option
Kaufoption

*

LINDEN COMANSA

Construcciones Metálicas COMANSA S. A.

Tel.: (34) 948 335 020
Fax: (34) 948 330 810
e-mail: info@comansa.com
www.comansa.com

Polígono Urbizkain
E-31620 HUARTE-PAMPLONA.- SPAIN

DS.0840.03 10/08 **11 LC 132** 11,020 lbs.

