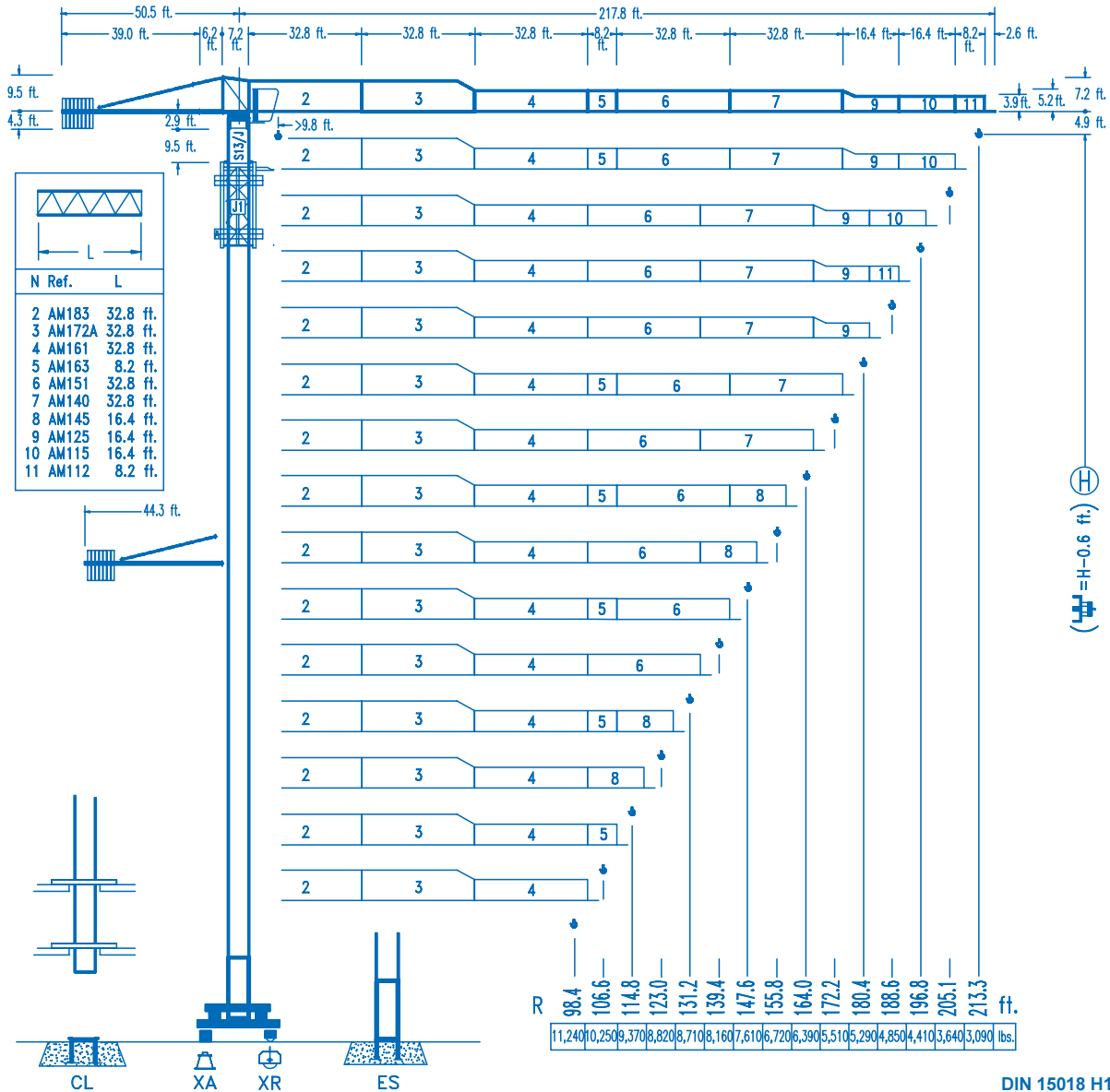


LINDEN COMANSA

LINDEN 1100

11 LC 160

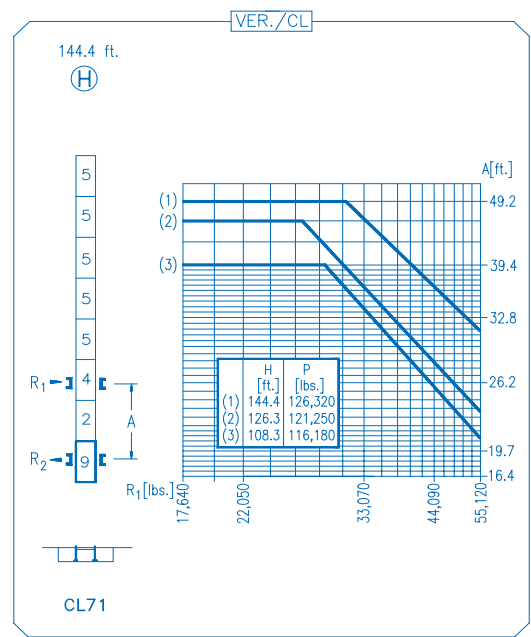
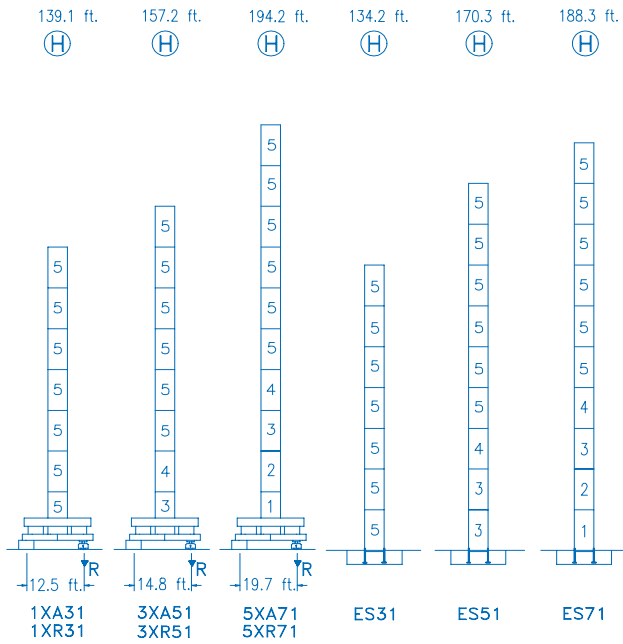
17,640 lbs.



R	Tower Crane Specifications																R						
213.3	45.3	49.2	65.6	81.0	87.9	91.9	98.4	106.6	114.8	123.0	131.2	139.4	147.6	155.8	164.0	172.2	180.4	188.6	196.8	205.1	213.3	ft.	98.4
	17,640	15,980	11,380	8,820	8,820	8,380	7,760	7,080	6,500	6,020	5,580	5,180	4,850	4,540	4,280	4,030	3,810	3,590	3,420	3,240	3,090	lbs.	8,820
205.1	49.5	65.6	75.5	88.3	96.1	98.4	106.6	114.8	123.0	131.2	139.4	147.6	155.8	164.0	172.2	180.4	188.6	196.9	205.1	ft.	98.4		
	17,640	14,990	12,740	10,980	8,820	8,820	8,580	7,850	7,210	6,660	6,190	5,780	5,400	5,070	4,760	4,500	4,250	4,030	3,840	3,640	lbs.	8,820	
196.8	55.1	65.6	75.5	82.0	91.9	98.4	107.9	114.8	123.0	131.2	139.4	147.6	155.8	164.0	172.2	180.4	188.6	196.9	ft.	98.4			
	17,640	14,400	12,210	11,070	9,680	8,820	8,820	8,220	7,610	7,080	6,590	6,170	5,800	5,470	5,160	4,890	4,630	4,410	lbs.	8,820			
188.6	57.1	65.6	75.5	82.0	91.9	102.4	111.9	114.8	123.0	131.2	139.4	147.6	155.8	164.0	172.2	180.4	188.6	ft.	98.4				
	17,640	14,990	12,740	11,550	10,080	8,820	8,820	8,580	7,940	7,390	6,880	6,460	6,060	5,710	5,400	5,110	4,850	lbs.	8,820				
180.4	58.7	65.6	75.5	82.0	91.9	98.4	105.3	115.2	123.0	131.2	139.4	147.6	155.8	164.0	172.2	180.4	ft.	98.4					
	17,640	15,480	13,160	11,930	10,430	9,590	8,820	8,820	8,200	7,630	7,120	6,680	6,260	5,910	5,580	5,290	lbs.	8,820					
172.2	57.7	65.6	75.5	82.0	91.9	104.3	113.8	114.8	123.0	131.2	139.4	147.6	155.8	164.0	172.2	ft.	98.4						
	17,640	15,260	12,960	11,750	10,270	2,200	8,820	8,750	8,090	7,520	7,030	6,590	6,190	5,840	5,510	lbs.	8,820						
164.0	62.3	65.6	75.5	82.0	91.9	98.4	105.0	112.5	123.4	131.2	139.4	147.6	155.8	164.0	ft.	98.4							
	17,640	16,670	14,180	12,870	11,270	10,380	9,590	8,820	8,820	8,220	7,690	7,210	6,770	6,390	lbs.	8,820							
155.8	62.0	65.6	75.5	82.0	91.9	98.4	105.0	111.5	122.4	131.2	139.4	147.6	155.8	ft.	98.4								
	17,640	16,510	14,070	12,760	11,160	10,270	9,500	8,820	8,820	8,160	7,630	7,140	6,720	lbs.	8,820								
147.6	65.3	75.5	82.0	91.9	98.4	105.0	117.8	129.3	131.2	139.4	147.6	ft.	98.4										
	17,640	14,950	13,560	11,880	10,960	10,140	8,820	8,820	8,690	8,110	7,610	lbs.	8,820										
139.4	65.6	75.5	82.0	91.9	98.4	105.0	118.1	129.9	131.2	139.4	ft.	98.4											
	17,640	15,010	13,620	11,930	11,000	10,190	8,820	8,820	8,730	8,160	lbs.	8,820											
131.2	65.3	75.5	82.0	91.9	98.4	105.0	117.8	129.9	131.2	ft.	98.4												
	17,640	14,950	13,580	11,880	10,960	10,140	8,820	8,820	8,710	lbs.	8,820												

DS.0840.06 10/08 Reserva de modificaciones.- Subject to modifications.- Modifications réservées.- Konstruktionsänderungen vorbehalten.





R. máx. En servicio In operation En service In Betrieb

1XR31 164,460 lbs.
3XR51 157,630 lbs.
5XR71 154,100 lbs.

R. máx. Fuera de servicio Out of service Hors service Ausser Betrieb

1XR31 187,390 lbs.
3XR51 206,570 lbs.
5XR71 245,150 lbs.

CFU-4.0

5.4 hp.

0 ⇄ 295 ft./min

GR-7.5

2 x 55 ft.lbs.

0 ⇄ 0.7 rpm

TS2-5.5 **TRA-7.5**

2x40 ft.lbs. 2x55 ft.lbs.

0 ⇄ 65 ft./min

1XR31 **3XR51** **5XR 71**

TRA-7.5VC

2x55 ft.lbs.

0 ⇄ 65 ft./min

5XR71

EFU2-24-20

1,310 ft. 32 hp.

8,820 6,610 4,410 2,200 lbs. 105 98 131 164 197 230 253 ft./min

17,630 13,230 8,820 4,410 lbs. 48 66 82 98 115 125 ft./min

EFU2-37-20

2,030 ft. 50 hp.

8,820 6,610 4,410 2,200 lbs. 158 196 262 328 360 ft./min

17,630 13,230 8,820 4,410 lbs. 79 98 131 164 180 ft./min

EFU4-45-20

3,280 ft. 60 hp.

8,820 6,610 4,410 2,200 lbs. 184 328 460 590 720 ft./min

17,630 13,230 8,820 4,410 lbs. 92 164 230 295 360 ft./min

Tensión de alimentación Operating voltage Tension de service Betriebsspannung

400 V
3 ph
50 Hz

Optional Optional En option Kaufoption



Tel.: (34) 948 335 020
 Fax: (34) 948 330 810
 e-mail: info@comansa.com
 www.comansa.com

Polígono Urbizkain
 E-31620 HUARTE-PAMPLONA.- SPAIN

DS.0840.06 10/08 **11 LC 160** 17,640 lbs.

