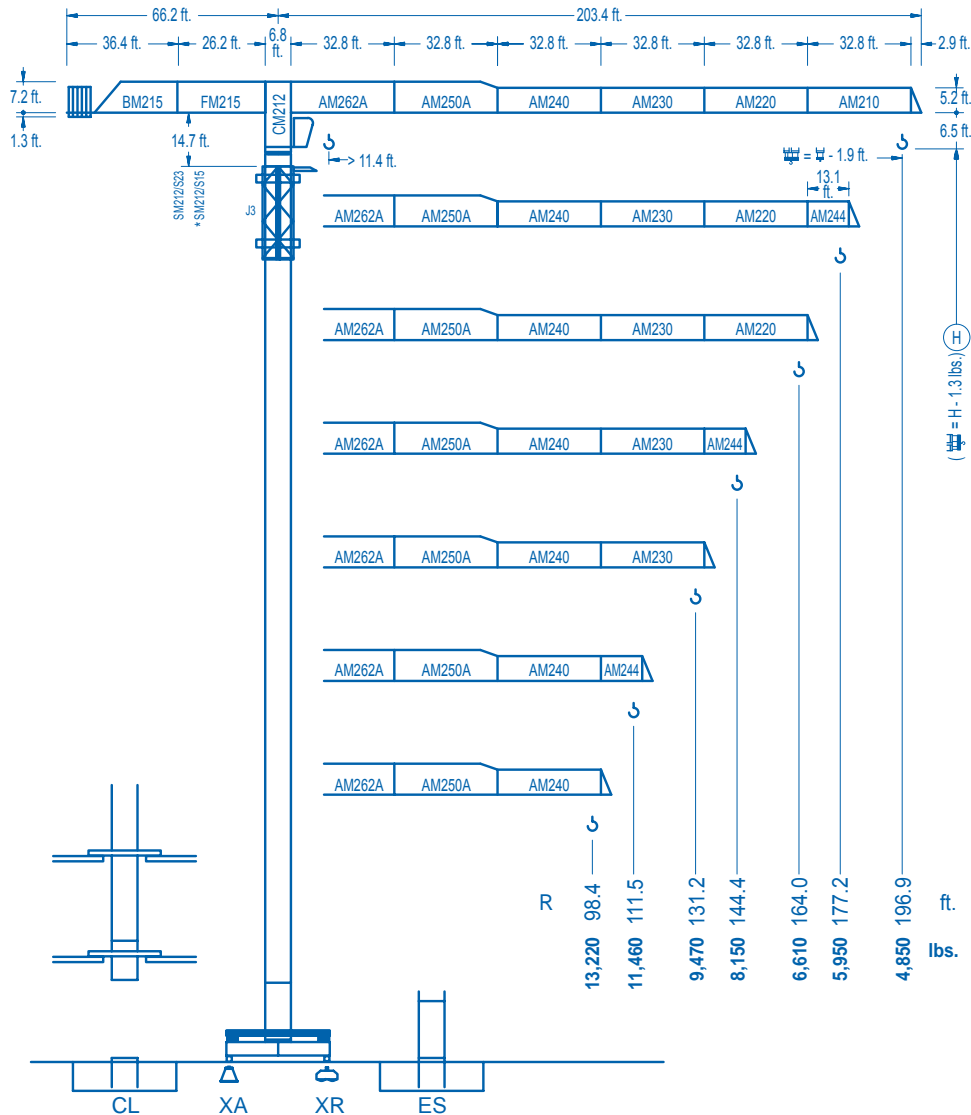


LINDEN COMANSA

LINDEN 2100

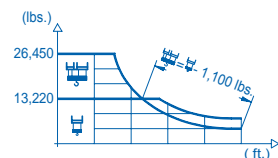
21 LC 170

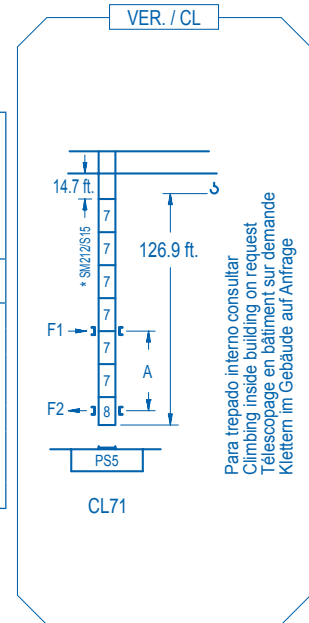
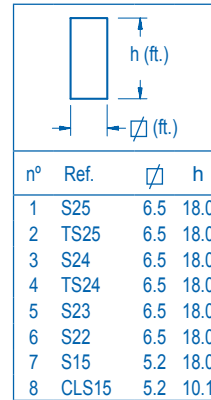
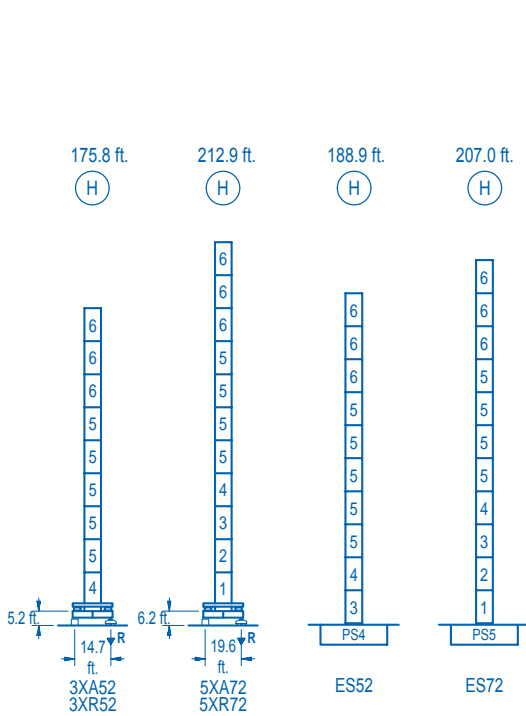
26,450 lbs.



CE EN 14439 (C/25)

R (ft.)	H			H								
196.9	46.6	65.6	82.0	84.6	98.4	111.5	131.2	144.4	164.0	177.2	196.9	ft.
	26,450	17,500	13,220	13,220	11,120	9,620	7,950	7,100	6,080	5,530	4,850	lbs.
177.2	48.6	65.6	85.6	89.6	98.4	111.5	131.2	144.4	164.0	177.2	ft.	
	26,450	18,450	13,220	13,220	11,880	10,290	8,520	7,610	6,530	5,950	lbs.	
164.0	48.9	65.6	86.0	90.6	98.4	111.5	131.2	144.4	164.0	ft.		
	26,450	18,500	13,220	13,220	12,010	10,400	8,610	7,700	6,610	lbs.		
144.4	50.5	65.6	82.0	88.9	94.8	111.5	131.2	144.4	ft.			
	26,450	19,290	14,660	13,220	13,220	11,000	9,110	8,150	lbs.			
131.2	51.5	65.6	82.0	91.2	98.1	111.5	131.2	ft.				
	26,450	19,870	15,120	13,220	13,220	11,410	9,470	lbs.				
111.5	51.2	65.6	82.0	90.6	98.4	111.5	ft.					
	26,450	19,680	14,980	13,220	13,220	11,460	lbs.					
98.4	50.9	65.6	82.0	89.9	98.4	ft.						
	26,450	19,530	14,840	13,220	13,220	lbs.						

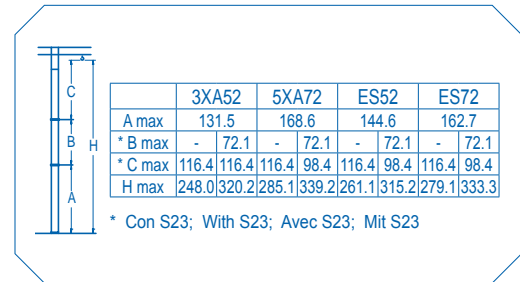




R. máx.	En servicio	3XR52.....193,560 lbs. 5XR72.....192,460 lbs.
	In operation	
	En service / In Betrieb	

R. máx.	Fuera de servicio	3XR52.....216,490 lbs. 5XR72.....292,550 lbs.
	Out of service	
	Hors service / Ausser Betrieb	

Para otras zonas de viento o alturas superiores consultar
For other wind zones or additional hook heights on request
Pour d'autres zones de vent ou des hauteurs supplémentaires sur demande
Für andere Windzonen oder weiteren Hakenhöhen auf Anfrage



CFU-7.5
10 hp.
0 ⇄ 308 ft./min

GR-12
2 x 88 ft.lbs.
0 ⇄ 0.8 rpm

TRA-7.5
2 x 55 ft.lbs.
0 ⇄ 78 ft./min

TRA-7.5VC *
2 x 55 ft.lbs.
0 ⇄ 78 ft./min
5XR72

EFU2-37-30
50 hp.
13,220 lbs. / 111 ft./min to 4,850 lbs. / 262 ft./min
26,450 lbs. / 56 ft./min to 9,700 lbs. / 131 ft./min

EFU4-45-30 *
60 hp.
13,220 lbs. / 125 ft./min to 2,640 lbs. / 525 ft./min
26,450 lbs. / 62 ft./min to 5,290 lbs. / 262 ft./min

EFU4-65-30 *
87 hp.
13,220 lbs. / 174 ft./min to 2,640 lbs. / 735 ft./min
26,450 lbs. / 88 ft./min to 5,290 lbs. / 367 ft./min

Tensión de alimentación	480 V
Operating voltage	3 ph
Tension de service	60 Hz
Betriebsspannung	

Opcional	*
Optional	
En option	
Kaufoption	

LINDEN COMANSA
Construcciones Metálicas COMANSA S. A.

Tel.: (34) 948 335 020
Fax: (34) 948 330 810
e-mail: info@comansa.com
www.comansa.com

Polígono Urbizkain
E-31620 HUARTE-PAMPLONA.- SPAIN

DS.1004.04 01/10 21 LC 170 26,450 lbs.