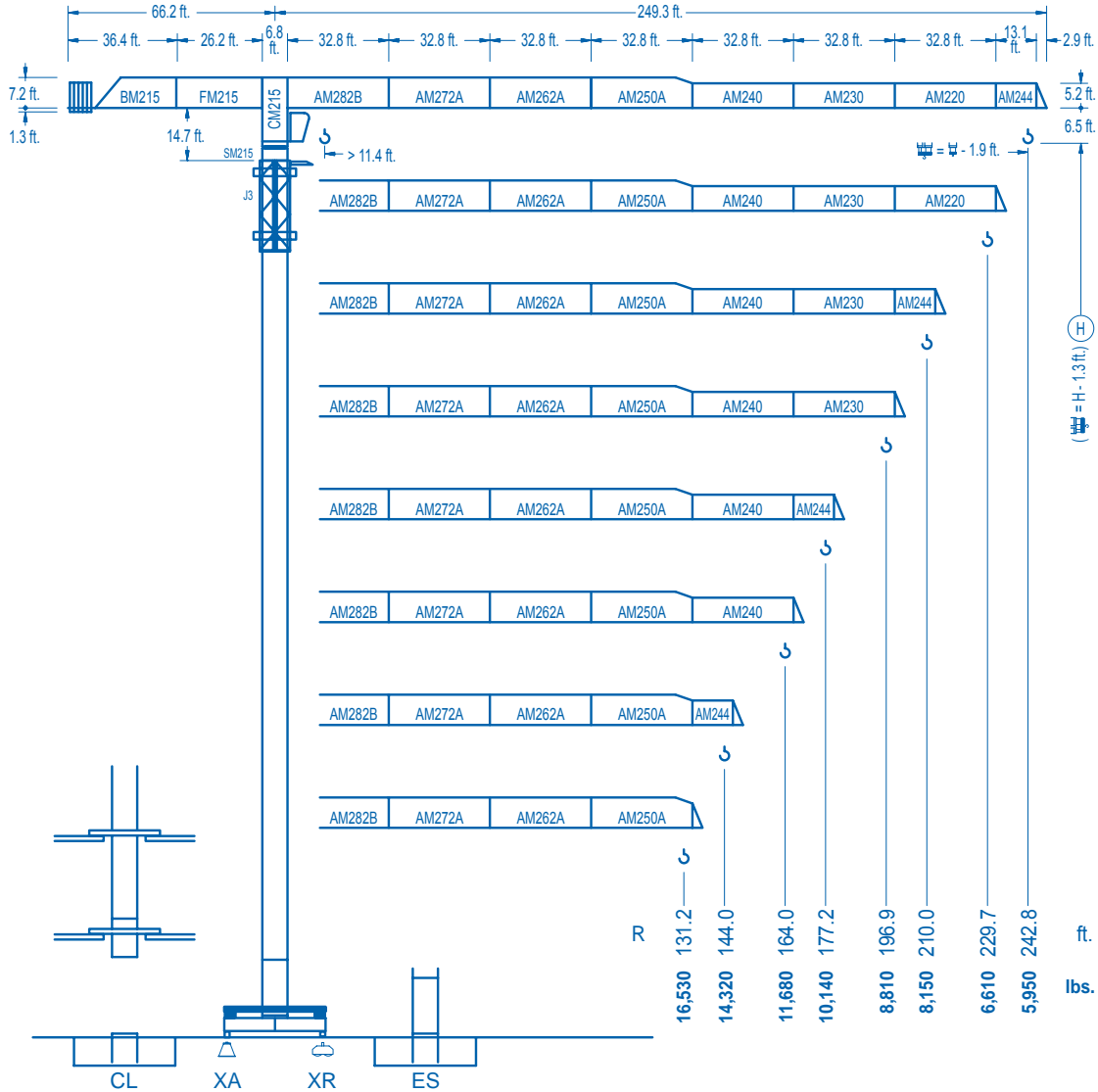




LINDEN 2100

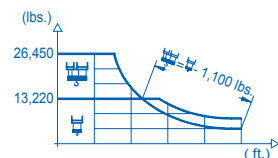
21 LC 290

26,450 lbs.



CE EN 14439 (C/25)

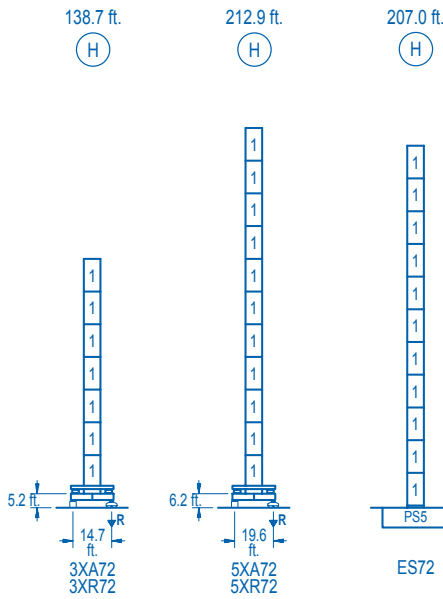
R (ft.)	H				H									
242.8	66.3	82.0	98.4	117.8	122.4	131.2	144.4	164.0	177.2	196.9	210.0	229.7	242.8	ft.
	26,450	20,600	16,530	13,220	13,220	12,220	10,970	9,470	8,660	7,660	7,090	6,370	5,950	lbs.
229.7	67.9	82.0	98.4	120.7	126.3	131.2	144.4	164.0	177.2	196.9	210.0	229.7		ft.
	26,450	21,180	17,010	13,220	13,220	12,660	11,360	9,820	8,980	7,940	7,360	6,610		lbs.
210.0	73.2	82.0	98.4	111.5	129.9	137.5	144.4	164.0	177.2	196.9	210.0			ft.
	26,450	23,080	18,580	15,970	13,220	13,220	12,530	10,840	9,930	8,790	8,150			lbs.
196.9	72.5	82.0	98.4	111.5	129.3	137.8	144.4	164.0	177.2	196.9				ft.
	26,450	22,900	18,450	15,860	13,220	13,220	12,550	10,860	9,950	8,810				lbs.
177.2	73.2	82.0	98.4	111.5	130.6	140.1	144.4	164.0	177.2					ft.
	26,450	23,140	18,650	16,030	13,220	13,220	12,780	11,060	10,140					lbs.
164.0	76.1	82.0	98.4	111.5	131.2	135.8	147.0	164.0						ft.
	26,450	24,260	19,570	16,850	13,810	13,220	13,220	11,680						lbs.
144.4		85.0	98.4	111.5	121.4	131.2	144.4							ft.
		26,450	22,260	19,210	17,370	15,800	14,320							lbs.
131.2		86.6	98.4	111.5	121.4	131.2								ft.
		26,450	22,800	19,680	17,800	16,530								lbs.



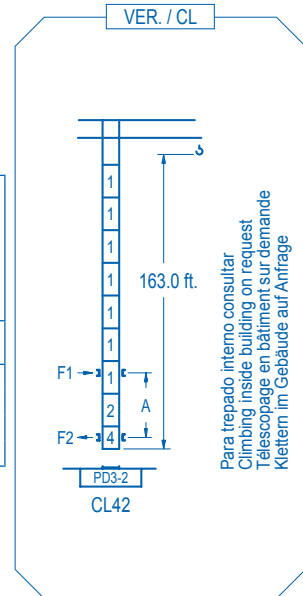
DS.1003.07 01/10

Reserva de modificaciones. Subject to modifications. Modifications réservées. Konstruktionsänderungen vorbehalten.





n°	Ref.	h (ft.)
1	S25	6.5 18.0
2	TD23A	6.5 18.0
3	D23	6.5 18.0
4	CLD23A	6.5 10.1



	3XA72	5XA72	ES72
A max	95.5	168.6	162.7
B max	108.3	108.3	108.3
C max	170.6	152.6	152.6
H max	266.1	356.3	321.2

R. máx.	En servicio In operation En service In Betrieb	3XR72.....231,480 lbs. 5XR72.....235,890 lbs.
----------------	---	--

R. máx.	Fuera de servicio Out of service Hors service Ausser Betrieb	3XR72.....162,700 lbs. 5XR72.....235,010 lbs.
----------------	---	--

Para otras zonas de viento o alturas superiores consultar
For other wind zones or additional hook heights on request
Pour d'autres zones de vent ou des hauteurs supplémentaires sur demande
Für andere Windzonen oder weiteren Hakenhöhen auf Anfrage

CFU-7.5
10 hp.
0 ⇄ 308 ft./min

GR-12
3 x 88 ft.lbs.
0 ⇄ 0.7 rpm

TRA-7.5
2 x 55 ft.lbs.
0 ⇄ 78 ft./min

TRA-7.5VC *
2 x 55 ft.lbs.
0 ⇄ 78 ft./min
5XR72

EFU2-37-30
1,260 ft.
50 hp.
13,220 lbs. / 111 ft./min to 4,850 lbs. / 262 ft./min
26,450 lbs. / 56 ft./min to 9,700 lbs. / 131 ft./min

EFU4-45-30 *
1,790 ft.
60 hp.
13,220 lbs. / 125 ft./min to 2,640 lbs. / 525 ft./min
26,450 lbs. / 62 ft./min to 5,290 lbs. / 262 ft./min

EFU4-65-30 *
2,590 ft.
87 hp.
13,220 lbs. / 174 ft./min to 2,640 lbs. / 735 ft./min
26,450 lbs. / 88 ft./min to 5,290 lbs. / 367 ft./min

Tensión de alimentación Operating voltage Tension de service Betriebsspannung	480 V 3 ph 60 Hz
--	------------------------

Opcional Optional En option Kaufoption	*
---	---

LINDEN COMANSA
Construcciones Metálicas COMANSA S. A.

Tel.: (34) 948 335 020
Fax: (34) 948 330 810
e-mail: info@comansa.com
www.comansa.com

Polígono Urbizkain
E-31620 HUARTE-PAMPLONA.- SPAIN

DS.1003.07 01/10	21 LC 290 26,450 lbs.
------------------	-----------------------