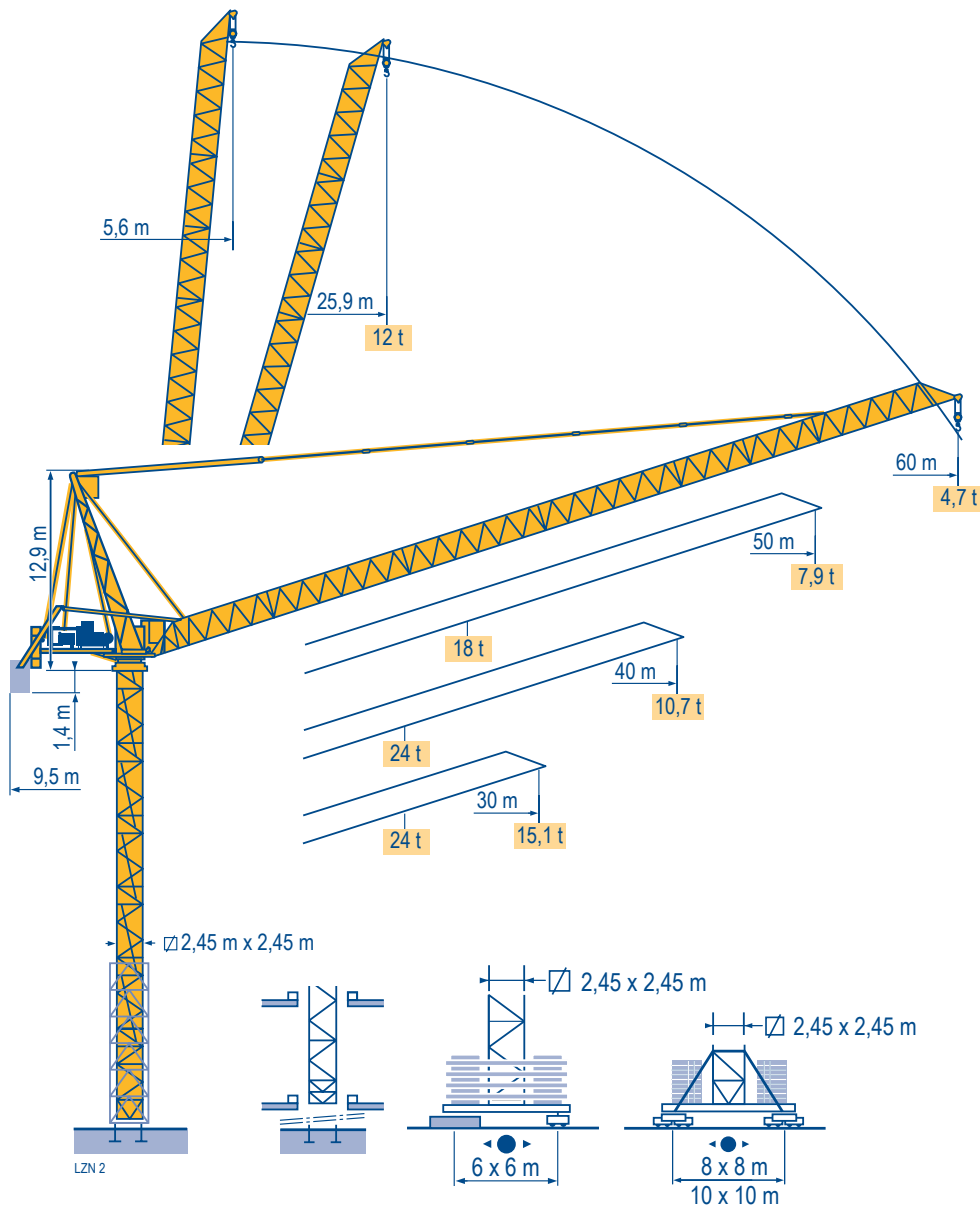


**POTAIN** 

**MR 405 B H24** 

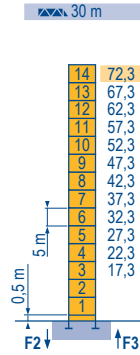


**CE** FEM 1.001-A3



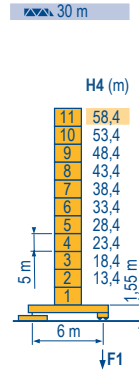
Mat / Réactions  $\square$  2,45 m  
 Maste / Eckdrücke  $\square$  30 m  $\Rightarrow$  60 m  
 Masts / Reactions  
 Mástil / Reacciones  
 Torre / Reazioni  
 Tramo / Reações

L2N.3



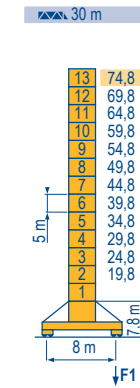
H (m)	5 m	3,33 m
30 m	14	-
40 m	12	2
50 m	11	2
60 m	10	2

**P 800 A**  
 F2  $\bullet$  227 t  
 $\blacksquare$  360 t  
 F3  $\bullet$  153 t  
 $\blacksquare$  292 t  
 $\blacktriangle$  104 t



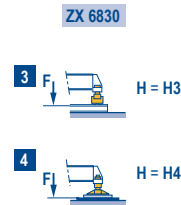
H4 (m)	H3 (m)	5 m	3,33 m
30 m	58,4	11	-
40 m	53,4	10	-
50 m	51,7	10	2
60 m	48,4	9	1
	-	7	2

**ZX 6830**  
 F1  $\bullet$  147 t  
 $\blacksquare$  177 t  
 $\blacktriangle$  106 t

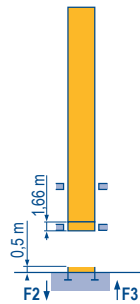


H (m)	5 m	3,33 m
30 m	13	-
40 m	12	2
50 m	10	2
60 m	9	2

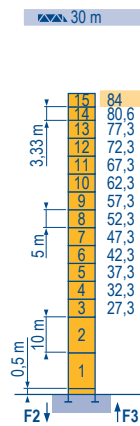
**Y 800 A**  
 F1  $\bullet$  160 t  
 $\blacksquare$  202 t  
 $\blacktriangle$  138 t



$\square$  2,45 m  
 $\square$  30 m  $\Rightarrow$  60 m

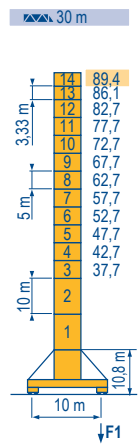


**B 800 B**  
 $\mathbf{i}$



H (m)	10 m	5 m	3,33 m
30 m	2	11	2
40 m	2	11	1
50 m	2	10	1
60 m	2	9	1

**P 850 A**  
 F2  $\bullet$  274 t  
 $\blacksquare$  505 t  
 F3  $\bullet$  184 t  
 $\blacksquare$  423 t  
 $\blacktriangle$  120 t



H (m)	10 m	5 m	3,33 m
30 m	2	10	2
40 m	2	10	1
50 m	2	10	-
60 m	2	8	2

**J 850 A**  
 F1  $\bullet$  172 t  
 $\blacksquare$  252 t  
 $\blacktriangle$  173 t

**MR 405 B H24**

**POTAIN**

F	D	GB	E	I	P
$\bullet$	$\bullet$	$\bullet$	$\bullet$	$\bullet$	$\bullet$
$\blacksquare$	$\blacksquare$	$\blacksquare$	$\blacksquare$	$\blacksquare$	$\blacksquare$
$\blacktriangle$	$\blacktriangle$	$\blacktriangle$	$\blacktriangle$	$\blacktriangle$	$\blacktriangle$
$\mathbf{i}$	$\mathbf{i}$	$\mathbf{i}$	$\mathbf{i}$	$\mathbf{i}$	$\mathbf{i}$
Réactions en service	Reaktionskräfte in Betrieb	Reactions in service	Reacciones en servicio	Reazioni in servizio	Reações em serviço
Réactions hors service	Reaktionskräfte außer Betrieb	Reactions out of service	Reacciones fuera de servicio	Reazioni fuori servizio	Reações fora de serviço
A vide sans lest (ni train de transport) avec flèche et hauteur maximum.	Ohne Last, Ballast (und Transportachse), mit Maximalausleger und Maximalhöhe.	Without load, ballast (or transport axles), with maximum jib and maximum height.	Sin carga, sin lastre, (ni tren de transporte), flecha y altura máxima.	A vuoto, senza zavorra (ne assali di trasporto) con braccio massimo e altezza massima.	Sem carga (nem trem de transporte)- sem lastro com lança e altura máximas.
Nous consulter	Auf Anfrage	Consult us	Consultarnos	Consultateci	Consultar-nos



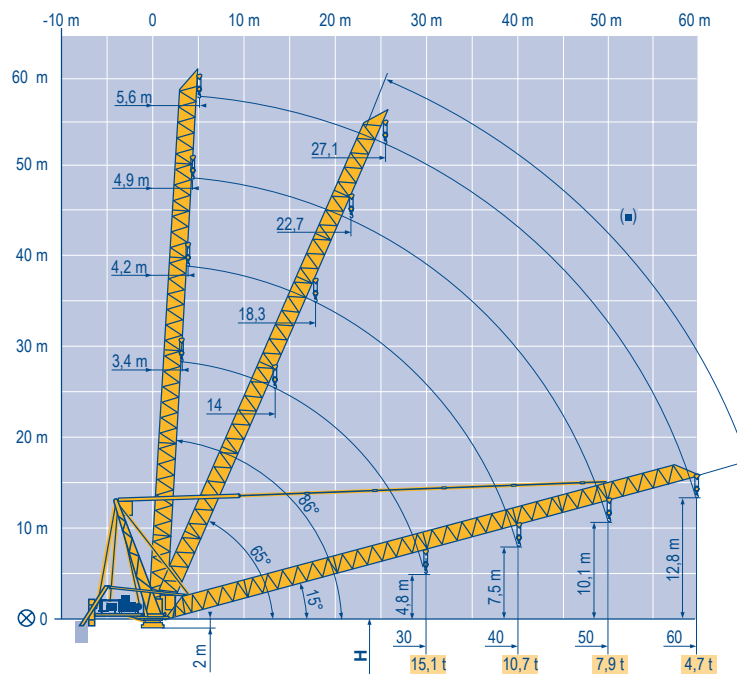
Courbes de charges  
 Lastkurven  
 Load diagrams  
 Curvas de cargas  
 Curve di carico  
 Curva de cargas

LZN 1

60 m	5,6 ▶	25,9	27	30	32	35	37	40	42	45	47	50	52	55	57	60 m
⊗	⊔	12	11,5	10,3	9,6	8,7	8,2	7,5	7,1	6,6	6,2	5,8	5,6	5,2	5	4,7 t
50 m	4,9 ▶	23,2	25	27	30	34,1	35	37	40	42	45	47	50 m			
⊗	⊔	18	16,7	15,4	13,7	12	11,7	11	10,1	9,6	8,9	8,5	7,9 t			
	⊔					12	11,7	11	10,1	9,6	8,9	8,5	7,9 t			
40 m	4,2 ▶	18,6	20	22	25	27	30	32	35	36	40 m					
⊗	⊔	24	22,3	20,2	17,6	16,3	14,6	13,6	12,4	12	10,7 t					
	⊔									12	10,7 t					
30 m	3,4 ▶	19,3	20	22	25	27	30 m									
⊗	⊔	24	23,1	20,9	18,3	16,9	15,1 t									
	⊔						12 t									

Flèche relevée  
 Ausleger in Steilstellung  
 Luffing jib  
 Flecha izada  
 Braccio impennato  
 Lança inclinada

LZN 1



MR 405 B H24

**POTAIN**

	<b>F</b> Axe articulation flèche Position girouette		<b>D</b> Ausleger-gelenkachse Windfreistellung		<b>GB</b> Jib hinge shaft Weathervaning position		<b>E</b> Eje articulación de flecha Posición eleta		<b>I</b> Asse cerniera braccio Libera rotazione		<b>P</b> Eixo de articulação da lança Posição em catavento
--	---	--	--	--	--	--	--	--	---	--	--




Mécanismes  
Antriebe  
Mechanisms  
Mecanismos  
Meccanismi  
Mecanismos

LZN 3

MR 405 B H24 - 50 Hz										ch - PS	kW		
▲ ▼	90 LBR 60 L910	m/min	2,8/28	4,4/44	7/70	11/111	1,4/14	2,2/22	3,5/35	5,5/55	90	66	910 m
		t	12	7,3	4,2	2,25	24	14,6	8,4	4,5			
↙ ↘	62 VBR	tr/min U/min - rpm					2 min 48 s				62	45	
↻	R - 8,8	m/min					0 → 0,67				2 x 6	2 x 4,4	
↻	Y 800 A RT584 A1 - 2V	m/min					13,5 - 27				8 x 7	8 x 5,2	
↻	J 850 A	<b>i</b>											
↻	ZX 6830 RT 664 A2B - 2V	m/min					16 - 32				6 x 7	6 x 5,2	
CEI 38 IEC 38		400 V (+6% -10%)		<b>kVA</b>		170 kVA							

MR 405 B H24 - 60 Hz										ch - PS	kW		
▲ ▼	108 LBR 60 L910	m/min	3,3/33	5,3/53	8,4/84	13,3/133	1,6/16,5	2,7/26,5	4,2/42	6,7/67	108	79	910 m
		t	12	7,4	4,2	2,25	24	14,8	8,4	4,5			
↙ ↘	74 VBR	tr/min U/min - rpm					2 min 20 s				74	54	
↻	R - 10,5	m/min					0 → 0,8				2 x 7,2	2 x 5,3	
↻	Y 800 A RT584 A1 - 2V	m/min					16 - 32				8 x 8,4	8 x 6,2	
↻	J 850 A	<b>i</b>											
↻	ZX 6830 RT 664 A2B - 2V	m/min					19 - 38				6 x 8,4	6 x 6,2	
CEI 38 IEC 38		480 V (+6% -10%)		<b>kVA</b>		205 kVA							

F	D	GB	E	I	P
Levage	Heben	Hoisting	Elevación	Sollevamento	Elevação
Relevage	Ausleger-Einziehen	Luffing	Elevación de flecha	Brandeggio	Inclinação da lança
Orientation	Schwenken	Slewing	Orientación	Rotazione	Rotação
Translation	Kranfahren	Travelling	Traslación	Traslazione	Translação

 Document commercial non contractuel. Pour toute information technique se référer à la notice correspondante. Unverbindliches Vertriebsdokument. Für technische Informationen, siehe die entsprechenden Anweisungen. This commercial document is not legally binding. For any technical information, please refer to the corresponding instructions. Documento comercial no contractual. Para cualquier información técnica, ver la noticia correspondiente. Documento commerciale non vincolante. Per tutte le informazioni tecniche fare riferimento al catalogo istruzioni. Documento comercial não vinculante. Para qualquer informação técnica complementar consultar as respectivas instruções.

**Bigge Crane and Rigging Co.**  
10700 Bigge Avenue  
San Leandro, CA 94577  
Phone: (888) 337-BIGGE or (510) 638-8100  
Fax: (510) 639-4053  
Email: towers@bigge.com  
Web site: www.biggetowercrane.com

**Manitowoc**  
Crane CARE

**POTAIN**   
Manitowoc Crane Group

18, rue de Charbonnières - B.P.173  
69132 ECULLY Cedex - France  
Tél. : +33 (0) 4 72 18 20 20  
Fax. : +33 (0) 4 72 18 20 00  
www.manitowoccrane.com

**Americas**  
Tel : +1 888 479 7278  
Tel : +1 717 593 2000

**Europe - Middle East - Africa**  
Tel : +33 (0) 4 72 81 50 00  
Tel : +44 (0) 191 522 2000

**Asia - Pacific**  
Tel : +65 6264 1188  
Fax : +65 6862 4040

www.manitowoccrane.com

**MR 405 B H24**  
Code J-91985-82\_Réf. 2003 48 LZN 4  
Copyright.Reproduction interdite © POTAIN 2003

Réalisation Sedoc

