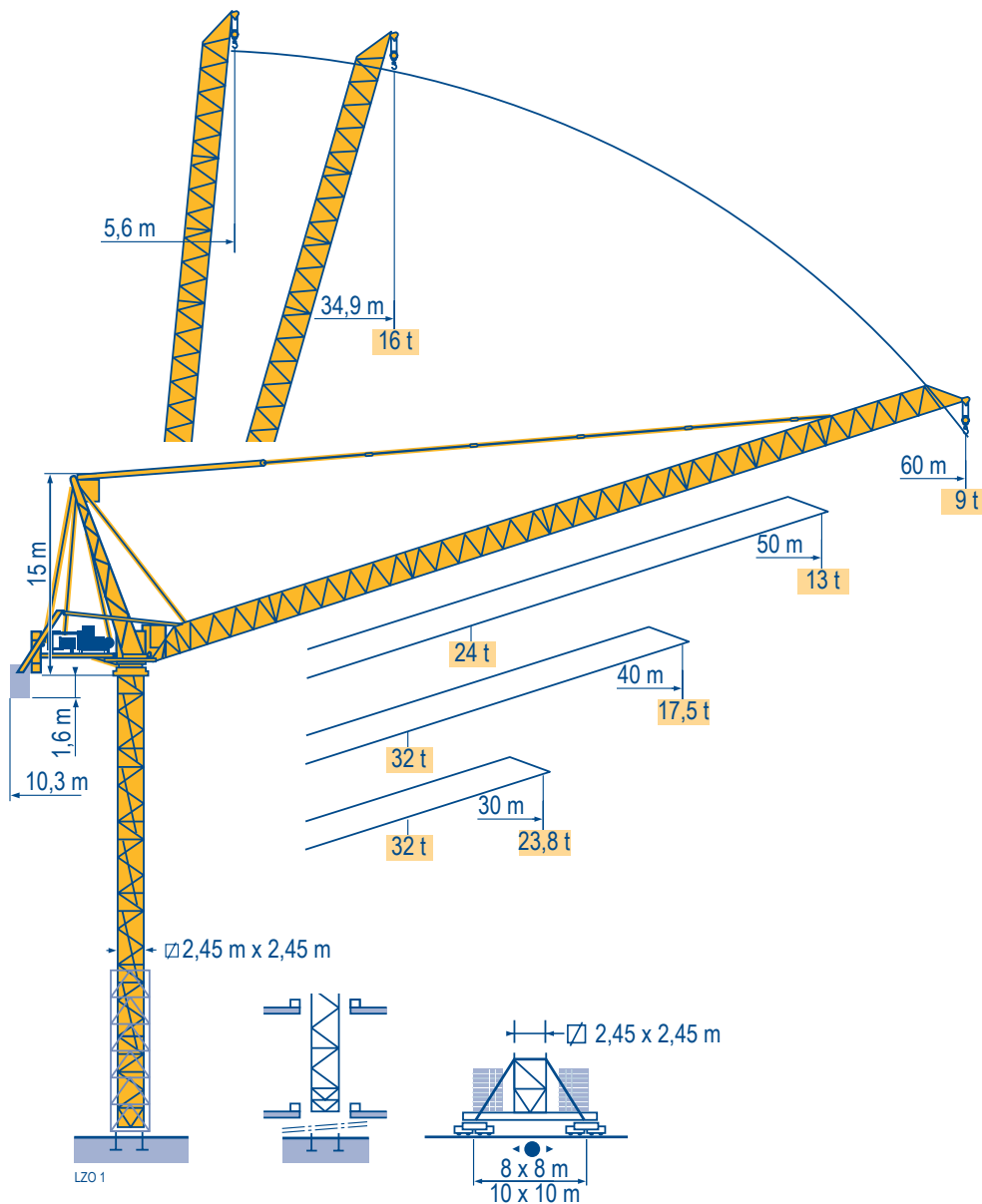


POTAIN 

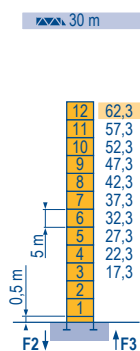
MR 605 B H32 



CE FEM 1.001-A3

Mat / Réactions \square 2,45 m
 Maste / Eckdrücke \triangle 30 m \Rightarrow 60 m
 Masts / Reactions
 Mástil / Reacciones
 Torre / Reazioni
 Tramo / Reações

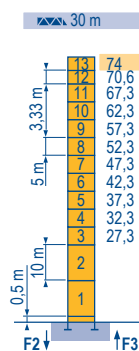
L202



Mat / Réactions	H (m)	5 m	3,33 m
40 - 50 m	59	10	2
60 m	60,6	11	1

P 800 A

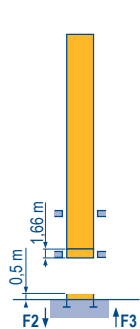
F2	289 t
F3	199 t
	259 t
	122 t



Mat / Réactions	H (m)	10 m	5 m	3,33 m
40 - 50 - 60 m	72,3	2	10	-

P 850 A

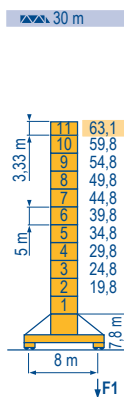
F2	324 t
F3	228 t
	490 t
	392 t
	134 t



B 800 B

F2	289 t
F3	199 t
	259 t
	122 t

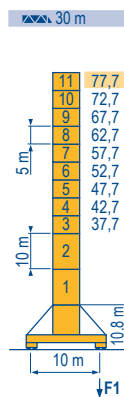
30 m \Rightarrow 60 m



Mat / Réactions	H (m)	5 m	3,33 m
40 - 50 m	58,1	9	1
60 m	61,4	9	2

Y 800 A

F1	195 t
	182 t
	158 t



Mat / Réactions	H (m)	10 m	5 m	3,33 m
40 - 50 m	74,4	2	7	2
60 m	76,1	2	8	1

J 850 A

F1	178 t
	226 t
	185 t

MR 605 B H32

POTAIN

F	D	GB	E	I	P
● Réactions en service	● Reaktionskräfte in Betrieb	● Reactions in service	● Reacciones en servicio	● Reazioni in servizio	● Reações em serviço
■ Réactions hors service	■ Reaktionskräfte außer Betrieb	■ Reactions out of service	■ Reacciones fuera de servicio	■ Reazioni fuori servizio	■ Reações fora de serviço
▲ A vide sans lest (ni train de transport) avec flèche et hauteur maximum.	▲ Ohne Last, Ballast (und Transportachse), mit Maximalausleger und Maximalhöhe.	▲ Without load, ballast (or transport axles), with maximum jib and maximum height.	▲ Sin carga, sin lastre, (ni tren de transporte), flecha y altura máxima.	▲ A vuoto, senza zavorra (ne assali di trasporto) con braccio massimo e altezza massima.	▲ Sem carga (nem trem de transporte)- sem lastro com lança e altura máximas.
i Nous consulter	Auf Anfrage	Consult us	Consultarnos	Consultateci	Consultar-nos



This information is for reference use only. Operators manual should be consulted and adhered to. Please contact Bigge Crane and Rigging Co. at 888-337-BIGGE or email towers@bigge.com for further information.



Mécanismes
Antriebe
Mechanisms
Mecanismos
Meccanismi
Mecanismos

L202

MR 605 B H32 50 Hz			↕				↕↕				ch - PS hp	kW	
▲ ▼	180 LBR 80 L 1090	m/min t	3,8/38 16	6/60 10,1	9,5/95 5,9	15,2/152 3,25	1,9/19 32	3/30 20,2	4,75/47,5 11,8	7,6/76 6,5	180	132	1090 m
↔	90 VBR		3 min 17 s								90	66	
↻	R - 13,2	tr/min U/min rpm	0 → 0,67								3 x 6	3 x 4,4	
↔	Y 800 A J 850 A	m/min	i										
CEI 38 IEC 38			kVA										
400 V (+6% -10%) 50 Hz			270 kVA										

MR 605 B H32 60 Hz			↕				↕↕				ch - PS hp	kW	
▲ ▼	215 LBR 80 L 1090	m/min t	4,6/46 16	7,2/72 10,1	11,4/114 5,9	18,2/182 3,25	2,3/23 32	3,6/36 20,2	5,7/57 11,8	9,1/91 6,5	215	158	1090 m
↔	108 VBR		2 min 44 s								108	79	
↻	R - 15,8	tr/min U/min rpm	0 → 0,8								3 x 7,2	3 x 5,3	
↔	Y 800 A J 850 A	m/min	i										
CEI 38 IEC 38			kVA										
480 V (+6% -10%) 60 Hz			325 kVA										

F	D	GB	E	I	P
Levage	Heben	Hoisting	Elevación	Sollevarmento	Elevação
Relevage	Ausleger-Einziehen	Luffing	Elevación de flecha	Brandeggio	Inclinação da lança
Orientation	Schwenken	Slewing	Orientación	Rotazione	Rotação
Translation	Kranfahren	Travelling	Traslación	Traslazione	Translação

Document commercial non contractuel. Pour toute information technique se référer à la notice correspondante. Unverbindliches Vertriebsdokument. Für technische Informationen, siehe die entsprechenden Anweisungen. This commercial document is not legally binding. For any technical information, please refer to the corresponding instructions. Documento comercial no contractual. Para cualquier información técnica, ver la noticia correspondiente. Documento commerciale non vincolante. Per tutte le informazioni tecniche fare riferimento al catalogo istruzioni. Documento comercial não vinculante. Para qualquer informação técnica complementar consultar as respectivas instruções.

Bigge Crane and Rigging Co.
10700 Bigge Avenue
San Leandro, CA 94577
Phone: (888) 337-BIGGE or (510) 638-8100
Fax: (510) 639-4053
Email: towers@bigge.com
Web site: www.biggetowercrane.com

Manitowoc
Crane CARE

Americas
Tel : +1 888 479 7278
Tel : +1 717 593 2000

Europe - Middle East - Africa
Tel : +33 (0) 4 72 81 50 00
Tel : +44 (0) 191 522 2000

Asia - Pacific
Tel : +65 6264 1188
Fax : +65 6862 4040

www.manitowoccrane.com

POTAIN

Manitowoc Crane Group

18, rue de Charbonnières - B.P.173
69132 ECULLY Cedex - France

Tél. : +33 (0) 4 72 18 20 20
Fax. : +33 (0) 4 72 18 20 00
www.manitowoccrane.com

MR 605 B H32
Code E-89985-01_Ref. 2003 48 LZ0 4
Copyright.Reproduction interdite © POTAIN 2003

Réalisation Sedoc