

## 4400 Series

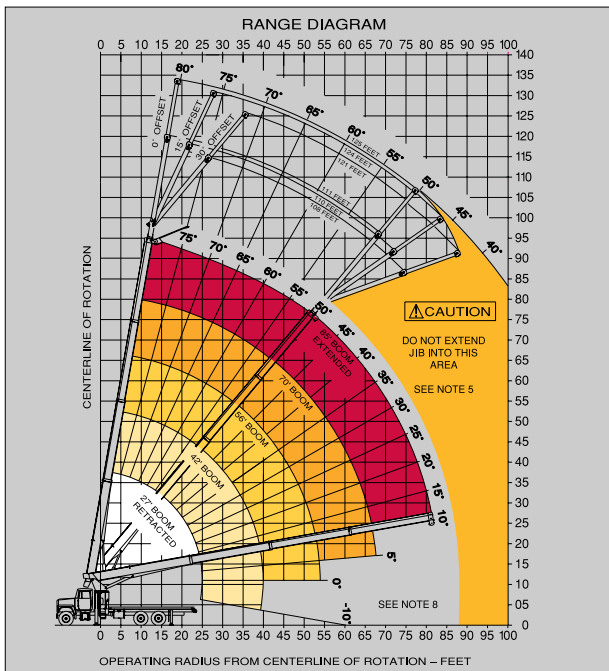
### 4485 Capacity and Range Chart:

| OPERATING HEIGHT | LOAD RATINGS IN LBS. WITH OUTRIGGERS EXTENDED |       |       |       |       |       | AREA OF OPERATION   |    |       |    |      |
|------------------|---|-------|-------|-------|-------|-------|---|----|-------|----|------|
|                  | 27 FT   | 42 FT | 56 FT | 70 FT | 85 FT |       |   |    |       |    |      |
| 5                | 77  | 44000 |       |       |       |       | <p>360° FULL CAPACITY WORK AREA</p> <p>DEDUCTIONS FROM RATED LOADS FOR HANDLING DEVICES</p> <p>OVERHAUL BALL 175 LBS.</p> <p>1 SHEAVE LOAD BLOCK: 200 LBS</p> <p>2 SHEAVE LOAD BLOCK: 250 LBS</p> <p>AUX. SHEAVE 50 LBS</p> <p>STOWED #8 DEDUCTIONS</p> |    |       |    |      |
| 8                | 70  | 31300 | 78    | 27000 |       |       |   |    |       |    |      |
| 10               | 65  | 26350 | 75    | 25000 |       |       |   |    |       |    |      |
| 12               | 60  | 22700 | 72    | 21425 | 77    | 18575 |   |    |       |    |      |
| 14               | 55  | 19900 | 69    | 18675 | 75    | 16100 |   | 78 | 13000 |    |      |
| 16               | 50  | 17600 | 66    | 16550 | 72    | 14175 |   | 76 | 12100 |    |      |
| 20               | 37  | 13800 | 60    | 13400 | 68    | 11375 |   | 73 | 9700  | 76 | 9550 |
| 25               | 10  | 8000  | 51    | 10650 | 62    | 9000  |   | 69 | 8750  | 73 | 7375 |
| 30               |   |       | 42    | 8600  | 57    | 7325  |   | 65 | 7000  | 70 | 6875 |
| 35               |   |       | 30    | 6700  | 50    | 6900  |   | 61 | 5850  | 66 | 5650 |
| 40               |   |       | 8     | 3650  | 43    | 5775  |   | 56 | 4900  | 62 | 4700 |
| 45               |   |       |       |       | 34    | 4550  |   | 50 | 4650  | 59 | 3950 |
| 50               |   |       |       |       | 24    | 3525  |   | 45 | 3675  | 55 | 3750 |
| 55               |   |       |       |       |       |       |   | 38 | 2950  | 51 | 3025 |
| 60               |   |       |       |       |       |       |   | 30 | 2400  | 46 | 2425 |
| 65               |   |       |       |       |       |       |   | 18 | 1800  | 41 | 1950 |
| 70               |   |       |       |       |       |       |   |    |       | 35 | 1550 |
| 75               |   |       |       |       |       |       |   |    |       | 28 | 1225 |
| 80               |   |       |       |       |       |       |   |    |       | 18 | 775  |
|                  |   | 700   | 500   | 350   | 300   | 250   |   |    |       |    |      |

NOTE: RATINGS ABOVE THE HEAVY LINE ARE BASED ON STRUCTURAL COMPETENCE AND NOT ON MACHINE STABILITY.

#### JIB CAPACITIES FOR ALL BOOM LENGTHS

| CAPACITY ALERT SYSTEM, IF SO EQUIPPED, IS NOT FUNCTIONAL WHEN LIFTING WITH JIB |     |      |      |      |      |      |      |
|--|-----|------|------|------|------|------|------|
| LOADED BOOM ANGLE  | 50° | 55°  | 60°  | 65°  | 70°  | 75°  | 80°  |
| RETRACTED  |     |      |      |      |      |      |      |
| 26 FT JIB  |     |      |      |      |      |      |      |
| 0° OFFSET  | 850 | 1025 | 1525 | 2325 | 3225 | 4325 | 5325 |
| 15° OFFSET   | 600 | 750  | 925  | 1375 | 1750 | 2000 | 2000 |
| 30° OFFSET   | 500 | 600  | 675  | 975  | 1175 | 1275 | 1275 |
| EXTENDED   |     |      |      |      |      |      |      |
| 40 FT JIB  |     |      |      |      |      |      |      |
| 0° OFFSET  | 525 | 725  | 1125 | 1525 | 2025 | 2525 | 2825 |
| 15° OFFSET   | 450 | 525  | 675  | 850  | 1025 | 1100 | 1100 |
| 30° OFFSET   | 400 | 450  | 550  | 650  | 750  | 750  | 750  |



NOTE: Diagrams depict recommended mounting dimensions. The dimensions of optional mounting configurations will vary. Please consult your dealer or Terex Cranes for specifics. Dimensions do not include load deflection.

## STINGER 4485

**NOTE:** Please consult the Terex Cranes full-line brochure for a complete listing of standard features and optional equipment.

### 4485 Optional Mounting Configurations:

Behind Cab (TC)  
Rear Mount (RM)

(Some standard features for the optional mounting configurations will vary. Please consult your Terex Cranes dealer or factory for chassis and mounting requirements.)

### TC 4485 Minimum Chassis Requirements:

Chassis specifications are minimum for truck-crane mount. Not applicable to optional mounting configurations.

- Gross Vehicle Weight Rating . . . . .52,000 lbs. (23,587 kg)
- Front Axle Weight Rating . . . . .18,000 lbs. (8,165 kg)
- Rear Axle Weight Rating . . . . .34,000 lbs. (15,422 kg)
- Wheelbase . . . . .246 in. (6,248 mm)
- Cab To Axle . . . . .168 in. (4,267 mm)
- Afterframe . . . . .100 in. (254 mm)
- Transmission . . . . .Heavy-Duty 6-Bolt PTO (Neutral lock-up required for automatic transmission)
- Electrical System . . . . .Heavy-Duty
- Cooling System . . . . .Heavy-Duty
- Frame Section Modulus . . . . .26 in.<sup>3</sup> (426 cm<sup>3</sup>)
- RBM Per Frame Rail . . . . .2,860,000 in./lbs. (32,955 kg-m)

### Rope and Reeving:

| 1 PART LINE  | 2 PART LINE   | 3 PART LINE   | 4 PART LINE   | 5 PART LINE   | <b>CAUTION</b><br>OVERLOAD AND ANTI-TWO-BLOCK SYSTEMS MUST BE IN GOOD OPERATING CONDITION BEFORE OPERATING CRANE. REFER TO OWNER'S MANUAL.<br><br>KEEP AT LEAST 3 WRAPS OF LOADLINE ON DRUM AT ALL TIMES.<br><br>USE ONLY 3/16" DIAMETER CABLE WITH 33,600 LB. MIN. BREAKING STRENGTH ON THIS MACHINE. |
|--|---|---|---|---|--|
| <br>OVERHAUL BALL<br>LOADS UP TO<br>9,800 LBS.<br>STD. CABLE<br>ROT. RESIST. CABLE | <br>ONE SHEAVE LOAD-BLOCK<br>LOADS UP TO<br>19,200 LBS.<br>STD. CABLE<br>ROT. RESIST. CABLE | <br>ONE SHEAVE LOAD-BLOCK<br>LOADS UP TO<br>28,800 LBS.<br>STD. CABLE<br>ROT. RESIST. CABLE | <br>TWO SHEAVE LOAD-BLOCK<br>LOADS UP TO<br>38,400 LBS.<br>STD. CABLE<br>ROT. RESIST. CABLE | <br>TWO SHEAVE LOAD-BLOCK<br>LOADS UP TO<br>48,000 LBS.<br>STD. CABLE<br>ROT. RESIST. CABLE |  |

THIS MACHINE COMPLIES WITH OSHA REGULATIONS 1910.102 AND 1926.102 WHERE APPLICABLE AT DATE OF MANUFACTURE

