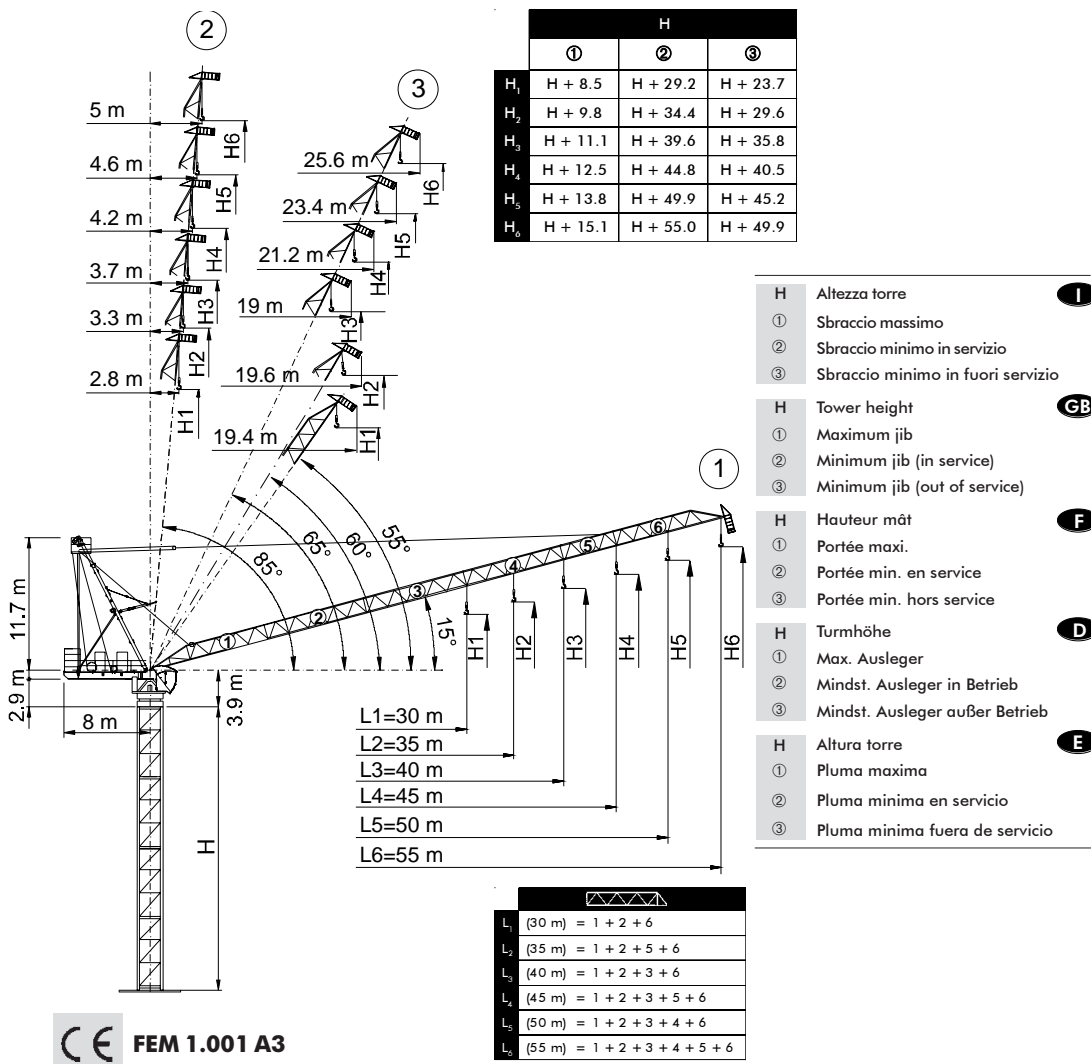


TEREX | COMEDIL

- Gru a torre a braccio impennabile
- Luffing Jib Tower Crane • Grue à tour à flèche relevable
- Turmdrehkran mit Steilstellung-Ausleger
- Grúa torre de pluma abatible



CTL 260-18 H20

In vigore dal: 01 gennaio 2007. Le specifiche del prodotto ed i prezzi sono soggetti a modifica senza alcun obbligo di preavviso. Le fotografie e/o disegni nel presente documento hanno uno scopo meramente illustrativo. Per il corretto utilizzo di ciascuna attrezzatura, si rimanda allo specifico manuale d'istruzioni. L'inosservanza di quanto previsto nel manuale d'istruzione nell'utilizzo dell'attrezzatura, così come un comportamento irresponsabile potrebbero cagionare gravi lesioni o il decesso. Le nostre attrezzature sono coperte solo ed esclusivamente dalla garanzia standard scritta prevista per ogni specifico prodotto, con esclusioni di qualsivoglia ulteriore garanzia, sia tacita che espressa, da parte di Terex. I prodotti e servizi elencati possono essere marchi di fabbrica, di servizi o ragioni sociali appartenenti a Terex Corporation e/o alle sue affiliate operative sia negli USA che in altri paesi e tutti i diritti s'intendono riservati. "TEREX" è un marchio appartenente a Terex Corporation e registrato sia negli USA che in altri paesi. Copyright © 2007 Terex Corporation.

Effective Date: January 01, 2007. Product specifications and prices are subject to change without notice or obligation. The photographs and/or drawings in this document are for illustrative purposes only. Refer to the appropriate Operator's Manual for instructions on the proper use of this equipment. Failure to follow the appropriate Operator's Manual when using our equipment or to otherwise act irresponsibly may result in serious injury or death. The only warranty applicable to our equipment is the standard written warranty applicable to the particular product and sale and Terex makes no other warranty, express or implied. Products and services listed may be trademarks, service marks or trade-names of Terex Corporation and/or its subsidiaries in the USA and other countries and all rights are reserved. "TEREX" is a registered trademark of Terex Corporation in the USA and many other countries. Copyright © 2007 Terex Corporation.

UTEDOC. REV.000 04_2007



TEREX | COMEDIL

CTL 260-18

Diagramma di portata **I**
Load Diagram **GB**

Courbes de charges **F**
Lastkurven **D**

Curvas de cargas **E**

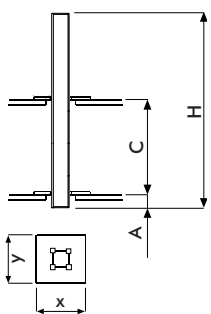
CTL 260-18										
		15	20	25	30	35	40	45	50	55
	9 t	9.00	9.00	9.00	8.36	6.71	5.47	4.50	3.73	3.10
	13.5 t	13.5	13.5	10.45	8.14	6.50	5.26	4.30	3.53	2.90
	9 t	9.00	9.00	9.00	9.00	7.92	6.54	5.46	4.60	
	13.5 t	13.5	13.5	11.91	9.34	7.50	6.13	5.05	4.20	*
	18 t	18.0	15.76	11.91	9.34	7.50	6.13	5.05	4.20	
	9 t	9.00	9.00	9.00	9.00	8.28	6.88	5.80		
	13.5 t	13.5	13.5	12.3	9.71	7.86	6.48	5.40	*	
	18 t	18.0	16.19	12.3	9.71	7.86	6.48	5.40		
	9 t	9.00	9.00	9.00	9.00	8.60	7.20			
	13.5 t	13.5	13.5	12.64	10.04	8.19	6.80	*		
	18 t	18.0	16.54	12.64	10.04	8.19	6.80			
	9 t	9.00	9.00	9.00	9.00	8.70				
	13.5 t	13.5	13.5	12.7	10.13	8.30	*			
	18 t	18.0	16.55	12.7	10.13	8.30				
	9 t	9.00	9.00	9.00	9.00					
	13.5 t	13.5	13.5	12.77	10.2	*				
	18 t	18.0	16.63	12.77	10.2					

* = + 200 kg [- 50 m - 45 m - 40 m - 35 m - 30 m] **i**

Altre installazioni **I**
Other configurations **GB**

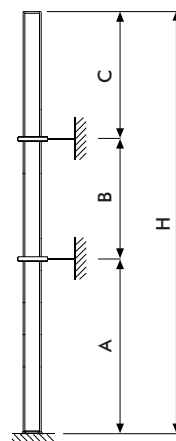
Autres implantations **F**
Aufstellmöglichkeiten **D**

Otras implantaciones **E**



i
Gru climbing
Bottom climbing crane
Télescopage sur dalles
Kletterkran im Gebäude
Grúa trepadora

I
GB
F
D
E



i
Gru ancorata
Crane tied to the structure
Grue ancrée
Geankerter Kran
Grúa anclada

I
GB
F
D
E

H20 RTL			
[m]			
	L ₁₋₂₋₃	L ₄₋₅	L ₆
A _{min/max}	25/35	25/32	25/28
B _{min/max}	18/26	18/22	18/22
C _{max}	29	27	25
H _{max}	i		

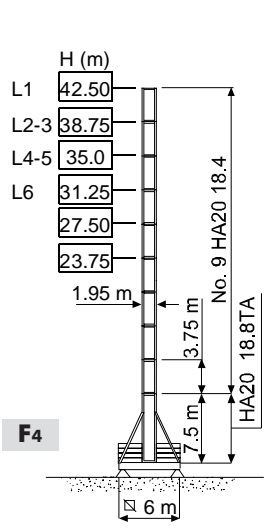
i Consultateci **I** Consult us **GB** Nous consulter **F** Auf Anfrage **D** Consultarnos **E**

TEREX | COMEDIL

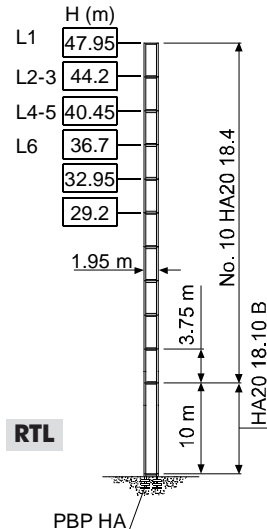
CTL 260-18

Torre **I** Tour **F** Torre **E**
 Tower **GB** Turm **D**

H20

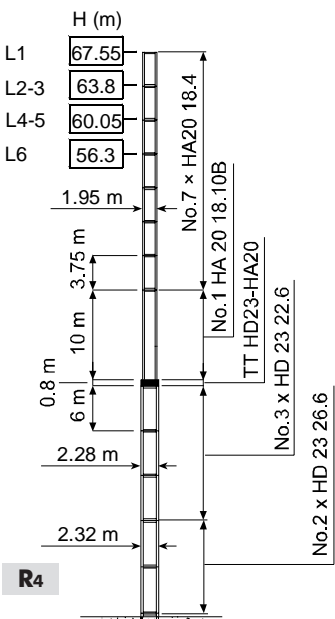


R1	1136 kN ●	1350 kN ◆
R2	-	-
	80 t	



R1	2300 kN ●	2970 kN ◆
R2	1700 kN ●	2500 kN ◆
	75 t	

H20/HD23



R1	2600 kN ●	4400 kN ◆
R2	1900 kN ●	3800 kN ◆
	95 t	

- H Altezza torre **I**
- H Tower height **GB**
- H Hauteur mât **F**
- H Turmhöhe **D**
- H Altura torre **E**



TEREX | COMEDIL

CTL 260-18

Meccanismi	I	Mécanismes	F	Mecanismos	E
Mechanisms	GB	Antriebe	D		

	67 AFC 90 - LFC 45	144 kVA	2000/14/CE modificata
	67 AFC 90 - LFC 67	165 kVA	
	400 V - 50 Hz / 460 V - 60 Hz		

		m/min	t	kW		
	67 AFC 90 R00 67 AFC 90 R01 (VECTOR)		0 ⇨ 37	9	67	560 m (R00) 940 m (R01)
			0 ⇨ 54	6		
			0 ⇨ 77	4		
			0 ⇨ 82	3.7		
			0 ⇨ 130	1.5		
			0 ⇨ 24.5	13.5		
			0 ⇨ 36	9		
			0 ⇨ 51.3	6		
			0 ⇨ 54.6	5.5		
			0 ⇨ 86.6	2.25		
			0 ⇨ 18.5	18		
			0 ⇨ 27	12		
			0 ⇨ 38.5	8		
			0 ⇨ 41	7.4		
			0 ⇨ 65	3		

	LFC 45 R00/R01 (VECTOR)	2.5 min	45 kW
	LFC 67 R00/R01 (VECTOR)	1.8 min	67 kW
	SCC 2 2 112	0 ⇨ 0.75 r.p.m.	2 × 9.8 kW

	Sollevamento	I	Hoisting	GB	Levage	F	Heben	D	Elevación	E
	Brandeggio		Luffing		Relevage		Ausleger-Einziehen		Elevación de pluma	
	Rotazione		Slewing		Orientation		Schwenken		Orientación	
	Direttiva sul livello acustico		Directive on noise level		Directive sur le niveau acoustique		Richtlinie für den Schall Leistungspegel		Directiva sobre el nivel acustico	
	Consultateci		Consult us		Nous consulter		Auf Anfrage		Consultamos	
	Potenza totale richiesta		Power requirements		Puissance totale nécessaire		Geforderte Stromstärke		Potencia necesaria	
	Alimentazione		Power supply		Alimentation		Stromversorgung		Alimentación	

Gru Comedil s.r.l.

A Terex Company
Via S. Egidio 42/A, 33074 Fontanafredda (PN) - Italy
Tel. (+39) 0434 567 311 - Telefax (+39) 0434 998631
Internet e-mail: info@comedil.com
Internet home page: www.comedil.com

Divisione Automontanti

Via Alessandrina, 25 - 20095 Cusano Milanino (MI) - Italy
Tel. (+39) 02 613 16011 - Telefax (+39) 02 613 16034
Internet e-mail: info.CBR@comedil.com

Bigge Crane and Rigging Co.

10700 Bigge Avenue
San Leandro, CA 94577
Phone: (888) 337-BIGGE or (510) 638-8100
Fax: (510) 639-4053
Email: towers@bigge.com
Web site: www.biggetowercrane.com

