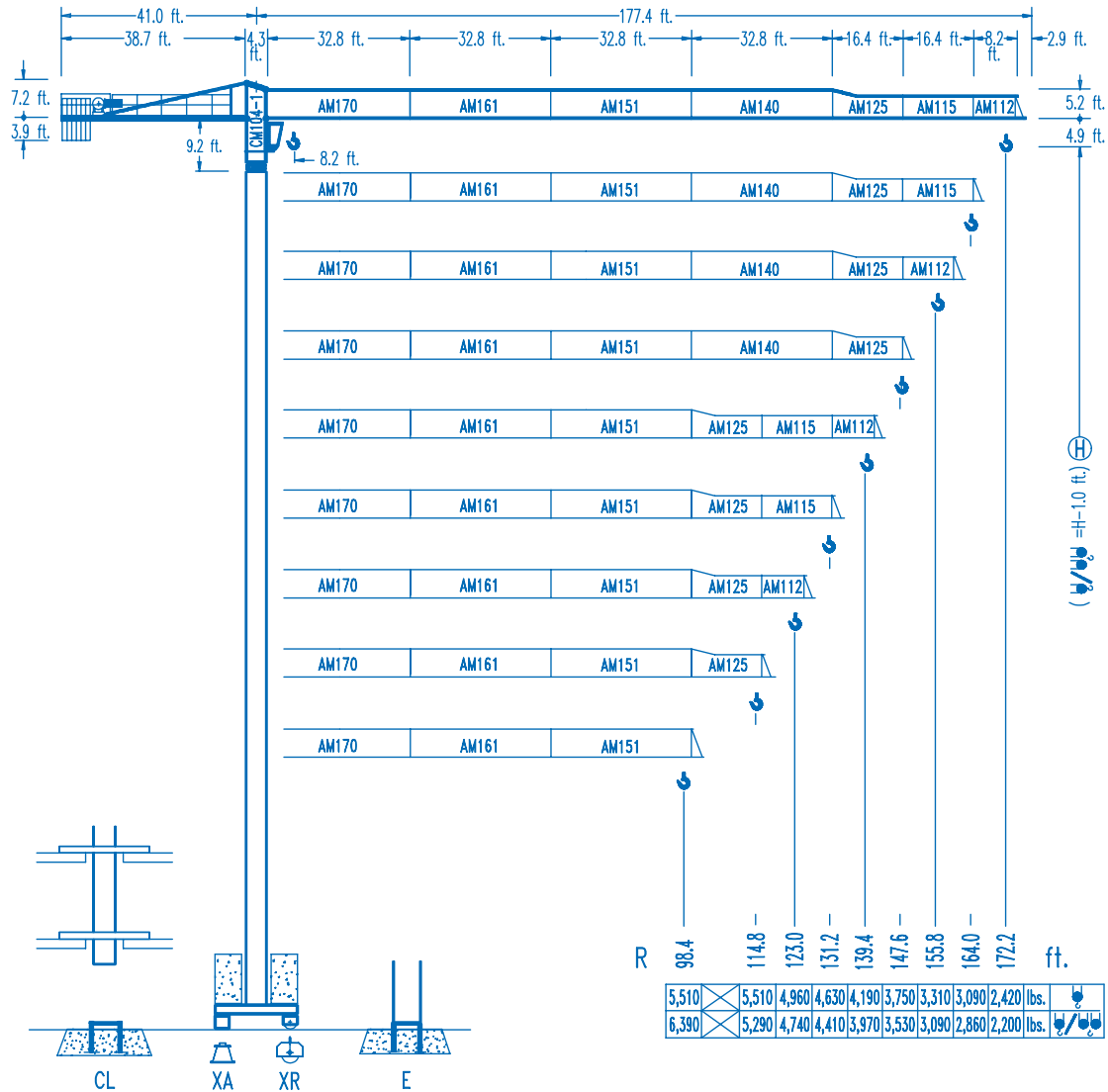




COMANSA

LC-5211

11,020 lbs.

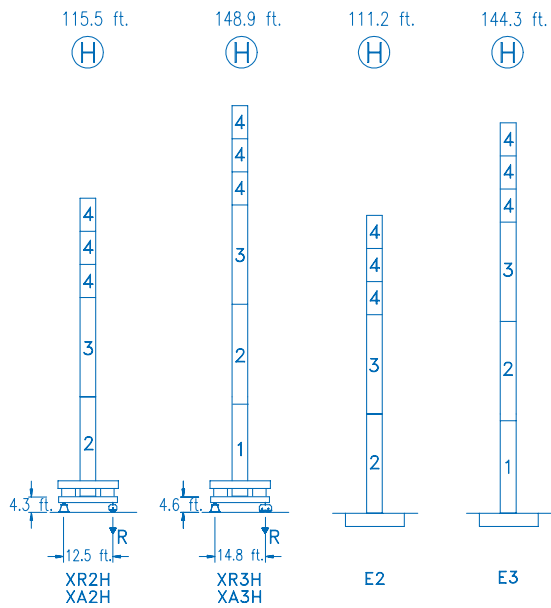


CE
DIN 15018 H1 B3

R	R(Cmax)	Cmax	65.6	82.0	98.4	114.8	123.0	131.2	139.4	147.6	155.8	164.0	172.2	ft.	lbs.
172.2	87.9 ft.	5,510	5,510	5,510	4,830	4,010	3,700	3,420	3,170	2,950	2,750	2,580	2,420	↕	
	46.6 ft.	11,020	7,450	5,730	4,580	3,790	3,480	3,200	2,950	2,730	2,530	2,360	2,200		
164.0	101.0 ft.	5,510	5,510	5,510	5,510	4,740	4,360	4,060	3,770	3,500	3,280	3,090	↕		
	53.5 ft.	11,020	8,730	6,740	5,540	4,520	4,140	3,830	3,550	3,280	3,060	2,860			
155.8	101.4 ft.	5,510	5,510	5,510	5,510	4,760	4,390	4,080	3,790	3,530	3,310	↕			
	53.5 ft.	11,020	8,770	6,790	5,470	4,540	4,170	3,860	3,570	3,310	3,090				
147.6	106.3 ft.	5,510	5,510	5,510	5,510	5,050	4,650	4,320	4,010	3,750	↕				
	56.1 ft.	11,020	9,260	7,160	5,800	4,830	4,430	4,100	3,790	3,530					
139.4	110.2 ft.	5,510	5,510	5,510	5,510	5,240	4,850	4,500	4,190	↕					
	58.4 ft.	11,020	9,650	7,470	6,040	5,020	4,630	4,280	3,970						
131.2	112.8 ft.	5,510	5,510	5,510	5,510	5,400	4,980	4,630	↕						
	59.7 ft.	11,020	9,920	7,690	6,210	5,180	4,760	4,410							
123.0	112.2 ft.	5,510	5,510	5,510	5,510	5,380	4,960	↕							
	59.4 ft.	11,020	9,850	7,650	6,170	5,160	4,740								
114.8	114.8 ft.	5,510	5,510	5,510	5,510	5,510	↕								
	60.7 ft.	11,020	10,090	7,850	6,350	5,290									
98.4	98.4 ft.	5,510	5,510	5,510	5,510	↕									
	61.0 ft.	11,020	10,160	7,890	6,390										

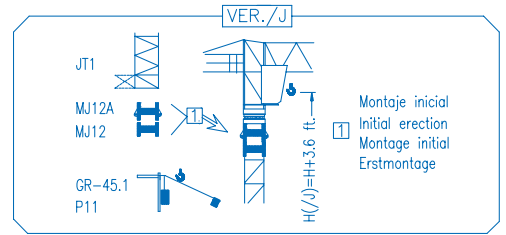
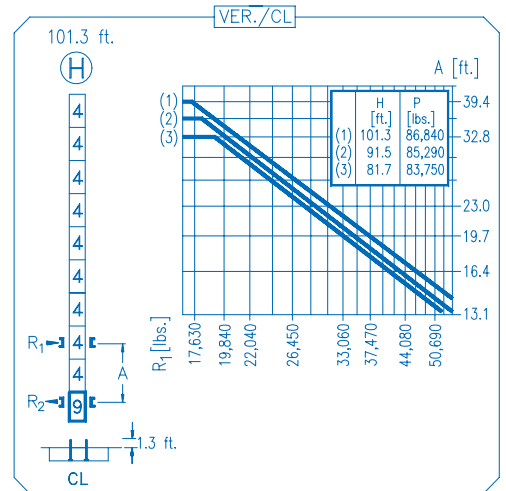
DS.0546.01 12/05 Reserva de modificaciones.- Subject to modifications.- Modifications réservées.- Konstruktionsänderungen vorbehalten.





N	Ref.	h
1	MT123	33.1 ft.
2	MH124A	38.7 ft.
3	MH124-1	38.7 ft.
4	MH121	9.8 ft.
9	CL20	7.2 ft.
MH124=(4)MH121-0.6 ft.		

H=H+0.6 ft.
 H=H
 H=H
 H=H-0.6 ft.



R. máx.	En servicio In operation En service In Betrieb	XR2H 96,650 lbs.
		XR3H 144,620 lbs.

R. máx.	Fuera de servicio Out of service Hors service Ausser Betrieb	XR2H 89,730 lbs.
		XR3H 101,630 lbs.

CS2-1.9
3 hp.
66 ft./min
189 ft./min

CFU-2.2
3 hp.
0 ↻ 262 ft./min

GR-9.0
66 ft.lbs.
0 ↻ 0.8 rpm

TS2-4.5 **TS2-5.5**
2x33 ft.lbs. 2x40 ft.lbs.
0 ↻ 78 ft./min
XR2H XR3H

820 ft.
ES3-18-12
29 hp.

		I	II	III
↻	ft./min	32	126	252
	lbs.	5,510	5,510	2,860
↻	ft./min	16	63	126
	lbs.	11,020	11,020	5,730

820 ft.
EFU2-18-12
24 hp.

Tensión de alimentación Operating voltage Tension de service Betriebsspannung	480 V 3 ph 60 Hz
--	---

Optional
Optional
En option
Kaufoption

COMANSA
Construcciones Metálicas COMANSA S. A.

Tel.: (34) 948 335 020
 Fax: (34) 948 330 810
 e-mail: info@comansa.com
 www.comansa.com
 Polígono Urbizkain
 E-31620 HUARTE-PAMPLONA.- SPAIN

DS.0546.01	12/05	LC-5211	11,020 lbs.
-------------------	-------	----------------	--------------------

